

Converting Colors

Decimal(11635589)

Have a look what the booklet for
Decimal(11635589) contains.

Decimal(11635589)	3
<i>Conversions</i>	4
<i>Details</i>	6
<i>Harmonies</i>	11
<i>Previews</i>	23
<i>Color Blindness Simulation</i>	26
<i>CSS Examples</i>	29

Color

Decimal(11635589)

Conversions

Conversions Part 1

Format	Color
Hex	B18B85
RGB	177, 139, 133
RGB Percent	69%, 55%, 52%
CMY	0.3059, 0.4549, 0.4784
CMYK	0.00, 0.21, 0.25, 0.31
HSL	8°, 22%, 61%
HSV	8°, 25%, 69%
XYZ	31.5977, 29.5058, 26.2201
YIQ	149.6780, 24.5740, 6.1900

Conversions

Conversions Part 2

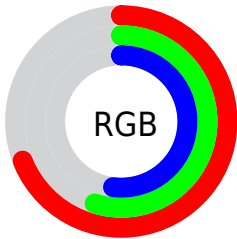
Format	Color
RYB	177, 140, 133
Decimal	11635589
CIELab	61.23, 13.50, 8.72
CIELCh	61, 16.073, 32.848
Yxy	29.5058, 0.3618, 0.3379
Android (android.graphics.Color)	4289825669 (0xFFB18B85)
YUV	149.6780, -8.2223, 23.9614
Hunter-Lab	54.3192, 8.7755, 9.4040

Details

The Decimal color **11635589** is a light color, and the websafe version is hex **CC9999**. A complement of this color would be **8760241**, and the grayscale version is **9868950**.

A 20% lighter version of the original color is **15319482**, and **8149332** is the 20% darker color. If you saturate the color by 10%, you get **11631731**, and if you desaturate by 10%, it is **11639447**.

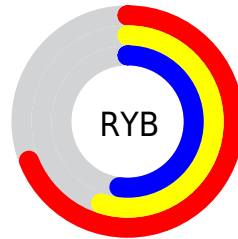
Distribution



Red (69%)

Green (55%)

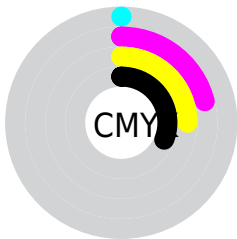
Blue (52%)



Red (69%)

Yellow (55%)

Blue (52%)

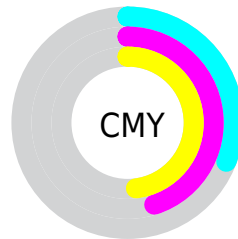


Cyan (0%)

Magenta (21%)

Yellow (25%)

Black (31%)



Cyan (31%)

Magenta (45%)

Yellow (48%)

Brightness & Saturation Gradients

These gradients show how the Decimal color 11635589 changes by changing the brightness by 10 percent. The first figure shows a shift by +10% for each color and the second figure -10%.

Similar to the brightness gradients but the following saturation gradients show a change of the Decimal color 11635589 by changing the saturation by 10% instead.

 11635589

 11635589

16777215

 9859436

 15319482

 8149332

 16768470

 6439228

 16775666

 4795175

 3282450

 1966080

 0

 11635589

 11635589

 11631731

 11639447

 11627618

 11643560

 11623760

 11647418

 11619902

 11651276

 11616045

 11655134

 11611931

 11659247

 11608073

 11663103

 11606016

 11665407

Harmonies

Analogous

The Analogous color harmony consists of three colors that are next to each other on the color wheel.



11569811



11635589



11177851

Triad

The Triadic color harmony groups three colors that are evenly spaced from another and form a triangle on the color wheel.



11635589



8297350



8754608

Complementary

The Complementary color scheme is a pair of colors which are on the opposite of each other on the color wheel.



11635589



8760241

Split Complementary

Split-complementary colors differ from the complementary color scheme. The scheme consists of three colors, the original color and two neighbors of the complement color.



7707053



11635589



7511189

Square

The Square scheme is like the rectangle color scheme, but the four colors are evenly spaced on the color wheel.



11635589



9345148



7248803



9998508

Rectangle

The Rectangle color scheme consists of four colors that form a rectangle on the color wheel.



11635589



10654328



7248803



8361648

Sweetspot

The Sweet Spot groups the original color and five complimentary colors.



11635589



15128789



11634091



7564138



15921906



7566195

Same Dimension

The Same Dimension uses a secret algorithm to generate beautiful new colors.



11635589



15116961



11641221



5853776



10032384



1704704

Inverse Universe

The Inverse Universe completely reimagines the original color for something new.



8760241



10607846



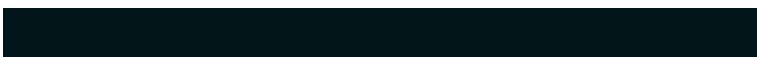
8754609



5265497



33945



5658

Previews

White Background



This preview shows how the Decimal color 11635589 looks on a white background.

Color Contrast Check

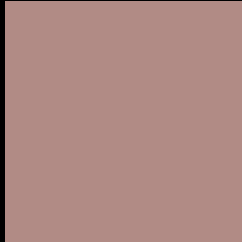
Large Text (above 18pt) WCAG AA ✓ Pass

Any Text WCAG AA × Fail

Large Text (above 18pt) WCAG AAA × Fail

Any Text WCAG AAA × Fail

Black Background



This preview shows how the Decimal color 11635589 looks on a black background.

Color Contrast Check

Large Text (above 18pt) WCAG AA ✓ Pass

Any Text WCAG AA ✓ Pass

Large Text (above 18pt) WCAG AAA ✓ Pass

Any Text WCAG AAA × Fail

If you want to check with other color combinations, try the [Color Contrast Checker](#).

Decimal 11635589 Background



This preview shows how black text looks on a background with the Decimal color 11635589.



This preview shows how white text looks on a background with the Decimal color 11635589.

Color Blindness Simulation

Color vision deficiency is a very complex topic, and I could not describe the different causes any better than Wikipedia does, so if you want to learn more, you should check out their [article about color blindness](#).

Dichromacy





Tritanopia
11766163

Trichromacy



Original Color
11635589

Protanomaly
10653832

Deuteranomaly
11243140

Tritanomaly
11700878

Monochromacy



Original Color
11635589

Achromatopsia
9868950

Achromatomaly
10523280

CSS Examples

Text

The CSS property to change the color of the text to Decimal 11635589 is called "color". The color property can be set on classes, ids or directly on the HTML element.

This example shows how text in the color #B18B85 looks like.

```
.text, #text, p{  
    color:#B18B85  
}
```

If you want to add a text shadow in that color use the text-shadow property, you can generate a text shadow directly with our [CSS Text Shadow Generator](#).

Here you see how black text with a 4 pixel #B18B85 colored shadow looks like.

```
.shadow{ text-shadow: 4px 4px 2px #B18B85
}
```

Border

The CSS property to change the border of an element to Decimal 11635589 is called "border". The border property can be set on classes, ids or directly on the HTML element.

This example shows the color as border, it can be applied via the CSS property "border" or "border-color".

```
.border, #border, table{ border:4px solid
#B18B85 }
```

If only the border color should be changed use the property `border-color`.

```
.border{ border-color:#B18B85 }
```

If you want to add a box shadow in that color use:

Here you see how a box with a 4 pixel #B18B85 colored shadow looks like.

```
.boxshadow{ -moz-box-shadow:4px 4px 4px  
4px #B18B85; -webkit-box-shadow:4px 4px  
4px 4px #B18B85; box-shadow:4px 4px 4px  
4px #B18B85 }
```

Background

The CSS property to change the background color of an element to Decimal 11635589 is called "background". The background property can be set on classes, ids or directly on the HTML element.

```
.background, #background, body{  
background:#B18B85 }
```

If only the background color should be changed can be used:

```
.background{ background-color:#B18B85 }
```

This example shows the color as background, it is applied via the CSS property "background".

To optimize and compress your CSS code, you can use our [online CSS compressor and optimizer](#) based on csstidy. If you want to create a linear or radial gradient as background or border, check our [CSS Gradient Generator](#).

Hey! You found this booklet interesting? Support Converting Colors with the new Membership Option!

The pro membership hides all ads, plus gives you double the colors in the color bucket, and more awesome pro features!

[Learn more, Memberships starting at \\$2.50/m!](#)

**Follow me
on Twitter!**

@ConvertingColor