

Converting Colors

Decimal(11635854)

Have a look what the booklet for
Decimal(11635854) contains.

Decimal(11635854)	3
<i>Conversions</i>	4
<i>Details</i>	6
<i>Harmonies</i>	11
<i>Previews</i>	23
<i>Color Blindness Simulation</i>	26
<i>CSS Examples</i>	29

Color

Decimal(11635854)

Conversions

Conversions Part 1

Format	Color
Hex	B18C8E
RGB	177, 140, 142
RGB Percent	69%, 55%, 56%
CMY	0.3059, 0.4510, 0.4431
CMYK	0.00, 0.21, 0.20, 0.31
HSL	357°, 19%, 62%
HSV	357°, 21%, 69%
XYZ	32.3920, 30.0563, 29.6854
YIQ	151.2910, 21.4100, 8.4660

Conversions

Conversions Part 2

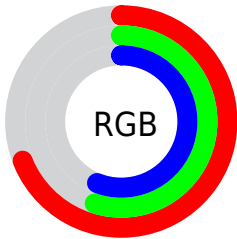
Format	Color
RYB	177, 140, 142
Decimal	11635854
CIELab	61.70, 14.32, 4.28
CIELCh	62, 14.952, 16.654
Yxy	30.0563, 0.3516, 0.3262
Android (android.graphics.Color)	4289825934 (0xFFB18C8E)
YUV	151.2910, -4.5805, 22.5468
Hunter-Lab	54.8236, 9.5238, 6.2727

Details

The Decimal color **11635854** is a light color, and the websafe version is hex **CC9999**. A complement of this color would be **9220527**, and the grayscale version is **9934743**.

A 20% lighter version of the original color is **15319748**, and **8149596** is the 20% darker color. If you saturate the color by 10%, you get **11631229**, and if you desaturate by 10%, it is **11640479**.

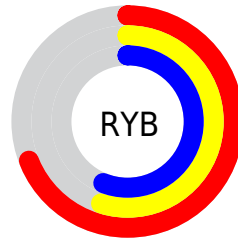
Distribution



Red (69%)

Green (55%)

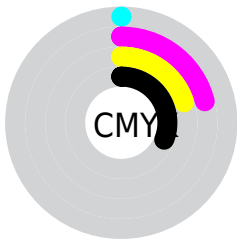
Blue (56%)



Red (69%)

Yellow (55%)

Blue (56%)

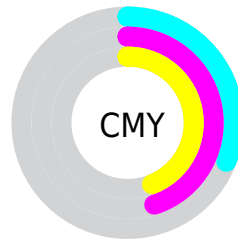


Cyan (0%)

Magenta (21%)

Yellow (20%)

Black (31%)



Cyan (31%)

Magenta (45%)

Yellow (44%)

Brightness & Saturation Gradients

These gradients show how the Decimal color 11635854 changes by changing the brightness by 10 percent. The first figure shows a shift by +10% for each color and the second figure -10%.

Similar to the brightness gradients but the following saturation gradients show a change of the Decimal color 11635854 by changing the saturation by 10% instead.

 11635854

 11635854

16777215

 9859700

 15319748

 8149596

 16768736

 6439492

 16775932

 4860974

 3282714

 2097152

 0

 11635854

 11635854

 11631229

 11640479

 11626861

 11644847

 11622236

 11649472

 11617611

 11654097

 11613242

 11658722

 11608618

 11663090

 11603993

 11665407

 11599882

Harmonies

Analogous

The Analogous color harmony consists of three colors that are next to each other on the color wheel.



11308187



11635854



11439746

Triad

The Triadic color harmony groups three colors that are evenly spaced from another and form a triangle on the color wheel.



11635854



8952451



8362158

Complementary

The Complementary color scheme is a pair of colors which are on the opposite of each other on the color wheel.



11635854



9220527

Split Complementary

Split-complementary colors differ from the complementary color scheme. The scheme consists of three colors, the original color and two neighbors of the complement color.



7642024



11635854



8101006

Square

The Square scheme is like the rectangle color scheme, but the four colors are evenly spaced on the color wheel.



11635854



9999996



7576988



9475246

Rectangle

The Rectangle color scheme consists of four colors that form a rectangle on the color wheel.



11635854



11112829



7576988



8100269

Sweetspot

The Sweet Spot groups the original color and five complimentary colors.



11635854



15128792



11504817



7564139



15921906



7566195

Same Dimension

The Same Dimension uses a secret algorithm to generate beautiful new colors.



11635854



15117487



11639948



5853265



10027016



1703937

Inverse Universe

The Inverse Universe completely reimagines the original color for something new.



11635854



15117487



9216433



5853265



10027016



1703937

Previews

White Background



This preview shows how the Decimal color 11635854 looks on a white background.

Color Contrast Check

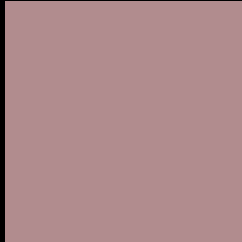
Large Text (above 18pt) WCAG AA ✓ Pass

Any Text WCAG AA × Fail

Large Text (above 18pt) WCAG AAA × Fail

Any Text WCAG AAA × Fail

Black Background



This preview shows how the Decimal color 11635854 looks on a black background.

Color Contrast Check

Large Text (above 18pt) WCAG AA ✓ Pass

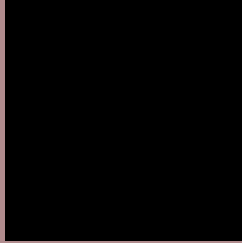
Any Text WCAG AA ✓ Pass

Large Text (above 18pt) WCAG AAA ✓ Pass

Any Text WCAG AAA ✓ Pass

If you want to check with other color combinations, try the [Color Contrast Checker](#).

Decimal 11635854 Background



This preview shows how black text looks on a background with the Decimal color 11635854.




This preview shows how white text looks on a background with the Decimal color 11635854.

Color Blindness Simulation

Color vision deficiency is a very complex topic, and I could not describe the different causes any better than Wikipedia does, so if you want to learn more, you should check out their [article about color blindness](#).

Dichromacy





Tritanopia
11701142

Trichromacy



Original Color

11635854

Protanomaly

10588817

Deuteranomaly

11243405

Tritanomaly

11701139

Monochromacy



Original Color

11635854

Achromatopsia

9934743

Achromatomaly

10523540

CSS Examples

Text

The CSS property to change the color of the text to Decimal 11635854 is called "color". The color property can be set on classes, ids or directly on the HTML element.

This example shows how text in the color #B18C8E looks like.

```
.text, #text, p{  
    color:#B18C8E  
}
```

If you want to add a text shadow in that color use the text-shadow property, you can generate a text shadow directly with our [CSS Text Shadow Generator](#).

Here you see how black text with a 4 pixel #B18C8E colored shadow looks like.

```
.shadow{ text-shadow: 4px 4px 2px #B18C8E
}
```

Border

The CSS property to change the border of an element to Decimal 11635854 is called "border". The border property can be set on classes, ids or directly on the HTML element.

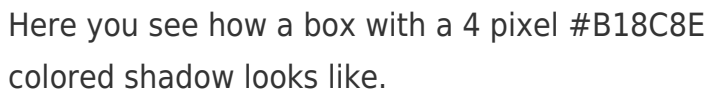
This example shows the color as border, it can be applied via the CSS property "border" or "border-color".

```
.border, #border, table{ border:4px solid
#B18C8E }
```

If only the border color should be changed use the property `border-color`.

```
.border{ border-color:#B18C8E }
```

If you want to add a box shadow in that color use:



Here you see how a box with a 4 pixel #B18C8E colored shadow looks like.

```
.boxshadow{ -moz-box-shadow:4px 4px 4px  
4px #B18C8E; -webkit-box-shadow:4px 4px  
4px 4px #B18C8E; box-shadow:4px 4px 4px  
4px #B18C8E }
```

Background

The CSS property to change the background color of an element to Decimal 11635854 is called "background". The background property can be set on classes, ids or directly on the HTML element.

```
.background, #background, body{  
background:#B18C8E }
```

If only the background color should be changed can be used:

```
.background{ background-color:#B18C8E }
```

This example shows the color as background, it is applied via the CSS property "background".

To optimize and compress your CSS code, you can use our [online CSS compressor and optimizer](#) based on csstidy. If you want to create a linear or radial gradient as background or border, check our [CSS Gradient Generator](#).

Hey! You found this booklet interesting? Support Converting Colors with the new Membership Option!

The pro membership hides all ads, plus gives you double the colors in the color bucket, and more awesome pro features!

[Learn more, Memberships starting at \\$2.50/m!](#)

**Follow me
on Twitter!**

@ConvertingColor