

Converting Colors

Decimal(11636587)

Have a look what the booklet for
Decimal(11636587) contains.

| | |
|--|----|
| Decimal(11636587) | 3 |
| <i>Conversions</i> | 4 |
| <i>Details</i> | 6 |
| <i>Harmonies</i> | 11 |
| <i>Previews</i> | 23 |
| <i>Color Blindness Simulation</i> | 26 |
| <i>CSS Examples</i> | 29 |

Color

Decimal(11636587)

Conversions

Conversions Part 1

| Format | Color |
|-------------|----------------------------|
| Hex | B18F6B |
| RGB | 177, 143, 107 |
| RGB Percent | 69%, 56%, 42% |
| CMY | 0.3059, 0.4392, 0.5804 |
| CMYK | 0.00, 0.19, 0.40, 0.31 |
| HSL | 31°, 31%, 56% |
| HSV | 31°, 40%, 69% |
| XYZ | 30.6078, 30.0536, 18.0976 |
| YIQ | 149.0620, 31.8200, -3.9880 |

Conversions

Conversions Part 2

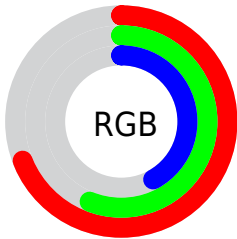
| Format | Color |
|-------------------------------------|--|
| RYB | 173, 177, 107 |
| Decimal | 11636587 |
| CIELab | 61.70, 7.80, 24.00 |
| CIElCh | 62, 25.238, 71.996 |
| Yxy | 30.0536, 0.3886, 0.3816 |
| Android (android.graphics.Color) | 4289826667 (0xFFB18F6B) |
| YUV | 149.0620, -20.7366, 24.5016 |
| Hunter-Lab | 54.8211, 3.7232, 18.8019 |

Details

The Decimal color **11636587** is a dark color, and the websafe version is hex **CC9966**. A complement of this color would be **7048625**, and the grayscale version is **9803157**.

A 20% lighter version of the original color is **15386015**, and **8084795** is the 20% darker color. If you saturate the color by 10%, you get **11634265**, and if you desaturate by 10%, it is **11638909**.

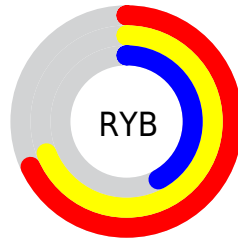
Distribution



Red (69%)

Green (56%)

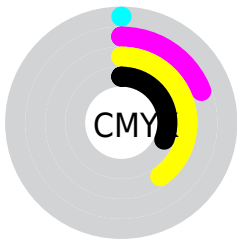
Blue (42%)



Red (68%)

Yellow (69%)

Blue (42%)

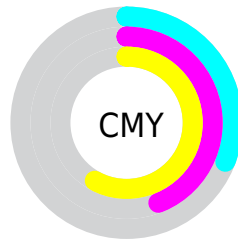


Cyan (0%)

Magenta (19%)

Yellow (40%)

Black (31%)



Cyan (31%)

Magenta (44%)

Yellow (58%)

Brightness & Saturation Gradients

These gradients show how the Decimal color 11636587 changes by changing the brightness by 10 percent. The first figure shows a shift by +10% for each color and the second figure -10%.

Similar to the brightness gradients but the following saturation gradients show a change of the Decimal color 11636587 by changing the saturation by 10% instead.



11636587



11636587

16777215



9860435



15386015



8084795



16769466



6374693



16776662



4730640



16777202



3152384



1572864



0



11636587



11636587



11634265



11638909

■ 11632200

■ 11640974

■ 11629878

■ 11643296

■ 11627812

■ 11645362

■ 11625490

■ 11647684

■ 11623169

■ 11650005

■ 11623168

■ 11652071

■ 11654393

■ 11656447

Harmonies

Analogous

The Analogous color harmony consists of three colors that are next to each other on the color wheel.



12552312



11636587



10262121

Triad

The Triadic color harmony groups three colors that are evenly spaced from another and form a triangle on the color wheel.



11636587



5612189



10783926

Complementary

The Complementary color scheme is a pair of colors which are on the opposite of each other on the color wheel.



11636587



7048625

Split Complementary

Split-complementary colors differ from the complementary color scheme. The scheme consists of three colors, the original color and two neighbors of the complement color.



8819904



11636587



5415090

Square

The Square scheme is like the rectangle color scheme, but the four colors are evenly spaced on the color wheel.



11636587



6922375



6724543



12158627

Rectangle

The Rectangle color scheme consists of four colors that form a rectangle on the color wheel.



11636587



9214831



6724543



10129339

Sweetspot

The Sweet Spot groups the original color and five complimentary colors.



11636587



15128778



11627406



7564131



15921906



7566195

Same Dimension

The Same Dimension uses a secret algorithm to generate beautiful new colors.



11636587



15118714



11645291



5854544



10047232



1707264

Inverse Universe

The Inverse Universe completely reimagines the original color for something new.



7048625



8040166



7039921



5264729



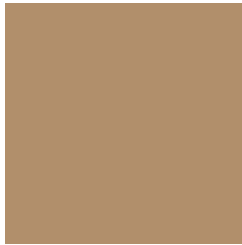
19097



3098

Previews

White Background



This preview shows how the Decimal color 11636587 looks on a white background.

Color Contrast Check

Large Text (above 18pt) WCAG AA ✓ Pass

Any Text WCAG AA × Fail

Large Text (above 18pt) WCAG AAA × Fail

Any Text WCAG AAA × Fail

Black Background



This preview shows how the Decimal color 11636587 looks on a black background.

Color Contrast Check

Large Text (above 18pt) WCAG AA ✓ Pass

Any Text WCAG AA ✓ Pass

Large Text (above 18pt) WCAG AAA ✓ Pass

Any Text WCAG AAA ✓ Pass

If you want to check with other color combinations, try the [Color Contrast Checker](#).

Decimal 11636587 Background



This preview shows how black text looks on a background with the Decimal color 11636587.



This preview shows how white text looks on a background with the Decimal color 11636587.

Color Blindness Simulation

Color vision deficiency is a very complex topic, and I could not describe the different causes any better than Wikipedia does, so if you want to learn more, you should check out their [article about color blindness](#).

Dichromacy



Original Color


11636587

Protanopia

10524014

Deuteranopia

11636587

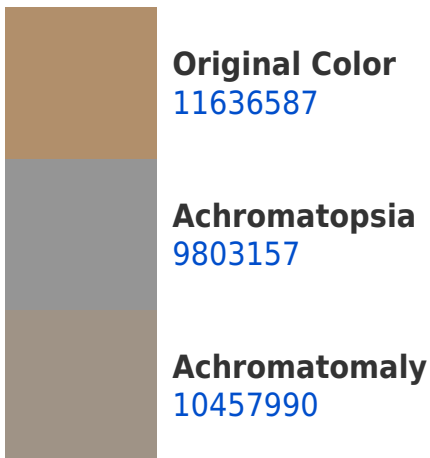


Tritanopia
11897492

Trichromacy



Monochromacy



CSS Examples

Text

The CSS property to change the color of the text to Decimal 11636587 is called "color". The color property can be set on classes, ids or directly on the HTML element.

This example shows how text in the color #B18F6B looks like.

```
.text, #text, p{  
  color:#B18F6B  
}
```

If you want to add a text shadow in that color use the text-shadow property, you can generate a text shadow directly with our [CSS Text Shadow Generator](#).

Here you see how black text with a 4 pixel #B18F6B colored shadow looks like.

```
.shadow{ text-shadow: 4px 4px 2px #B18F6B
}
```

Border

The CSS property to change the border of an element to Decimal 11636587 is called "border". The border property can be set on classes, ids or directly on the HTML element.

This example shows the color as border, it can be applied via the CSS property "border" or "border-color".

```
.border, #border, table{ border:4px solid
#B18F6B }
```

If only the border color should be changed use the property `border-color`.

```
.border{ border-color:#B18F6B }
```

If you want to add a box shadow in that color use:

Here you see how a box with a 4 pixel #B18F6B colored shadow looks like.

```
.boxshadow{ -moz-box-shadow:4px 4px 4px  
4px #B18F6B; -webkit-box-shadow:4px 4px  
4px 4px #B18F6B; box-shadow:4px 4px 4px  
4px #B18F6B }
```

Background

The CSS property to change the background color of an element to Decimal 11636587 is called "background". The background property can be set on classes, ids or directly on the HTML element.

```
.background, #background, body{  
background:#B18F6B }
```

If only the background color should be changed can be used:

```
.background{ background-color:#B18F6B }
```

This example shows the color as background, it is applied via the CSS property "background".

To optimize and compress your CSS code, you can use our [online CSS compressor and optimizer](#) based on csstidy. If you want to create a linear or radial gradient as background or border, check our [CSS Gradient Generator](#).

Hey! You found this booklet interesting? Support Converting Colors with the new Membership Option!

The pro membership hides all ads, plus gives you double the colors in the color bucket, and more awesome pro features!

[Learn more, Memberships starting at \\$2.50/m!](#)

**Follow me
on Twitter!**

@ConvertingColor