

# Converting Colors

Decimal(11638136)

Have a look what the booklet for  
Decimal(11638136) contains.

<b>Decimal(11638136)</b> .....	3
<i><b>Conversions</b></i> .....	4
<i><b>Details</b></i> .....	6
<i><b>Harmonies</b></i> .....	11
<i><b>Previews</b></i> .....	23
<i><b>Color Blindness Simulation</b></i> .....	26
<i><b>CSS Examples</b></i> .....	29

# **Color**

**Decimal(11638136)**

# Conversions

## Conversions Part 1

Format	Color
Hex	B19578
RGB	177, 149, 120
RGB Percent	69%, 58%, 47%
CMY	0.3059, 0.4157, 0.5294
CMYK	0.00, 0.16, 0.32, 0.31
HSL	31°, 27%, 58%
HSV	31°, 32%, 69%
XYZ	32.2691, 32.1981, 22.2834
YIQ	154.0660, 25.9970, -3.0830

# Conversions

## Conversions Part 2

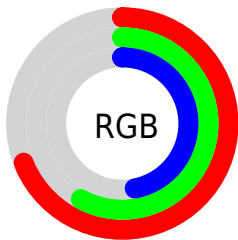
<b>Format</b>	<b>Color</b>
<b>RYB</b>	175, 177, 120
Decimal	11638136
CIELab	63.51, 6.11, 19.22
CIELCh	64, 20.166, 72.368
Yxy	32.1981, 0.3720, 0.3712
Android (android.graphics.Color)	4289828216 (0xFFB19578)
YUV	154.0660, -16.7945, 20.1131
Hunter-Lab	56.7433, 2.2094, 16.4369

# Details

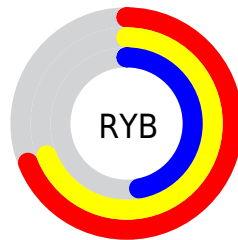
The Decimal color **11638136** is a light color, and the websafe version is hex **999966**. A complement of this color would be **7902385**, and the grayscale version is **10132122**.

A 20% lighter version of the original color is **15322028**, and **8086087** is the 20% darker color. If you saturate the color by 10%, you get **11635814**, and if you desaturate by 10%, it is **11640458**.

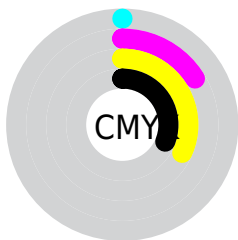
# Distribution



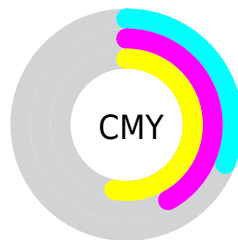
- Red (69%)
- Green (58%)
- Blue (47%)



- Red (69%)
- Yellow (69%)
- Blue (47%)



- Cyan (0%)
- Magenta (16%)
- Yellow (32%)
- Black (31%)



- Cyan (31%)
- Magenta (42%)
- Yellow (53%)


# Brightness & Saturation Gradients

These gradients show how the Decimal color 11638136 changes by changing the brightness by 10 percent. The first figure shows a shift by +10% for each color and the second figure -10%.

Similar to the brightness gradients but the following saturation gradients show a change of the Decimal color 11638136 by changing the saturation by 10% instead.




 11638136

 11638136

16777215

 9861983

 15322028

 8086087

 16771016

 6441777

 16777188

 4797467

 3284738

 1771264

 0

 11638136

 11638136

 11635814

 11640458

■ 11633749

■ 11642523

■ 11631427

■ 11644845

■ 11629105

■ 11647167

■ 11627040

■ 11649233

■ 11624718

■ 11651554

■ 11622912

■ 11653876

■ 11656191

■ 11658239

# Harmonies

## Analogous

The Analogous color harmony consists of three colors that are next to each other on the color wheel.



12357762



11638136



10525559

# Triad

The Triadic color harmony groups three colors that are evenly spaced from another and form a triangle on the color wheel.



11638136



6988961



10916788

# Complementary

The Complementary color scheme is a pair of colors which are on the opposite of each other on the color wheel.



11638136



7902385

# Split Complementary

Split-complementary colors differ from the complementary color scheme. The scheme consists of three colors, the original color and two neighbors of the complement color.



9411005



11638136



6923185

# Square

The Square scheme is like the rectangle color scheme, but the four colors are evenly spaced on the color wheel.



11638136



7906190



7839675



12029605

# Rectangle

The Rectangle color scheme consists of four colors that form a rectangle on the color wheel.



11638136



9609083



7839675



10458552



# Sweetspot

The Sweet Spot groups the original color and five complimentary colors.



11638136



15129295



11630740



7564389



15921906



7566195



# Same Dimension

The Same Dimension uses a secret algorithm to generate beautiful new colors.



11638136



15121036



11645304



5854544



10046976



1707264



# Inverse Universe

The Inverse Universe completely reimagines the original color for something new.



7902385



9222374



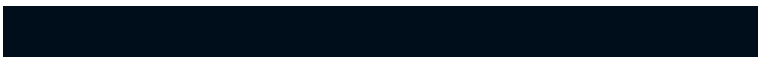
7895217



5264729



19353

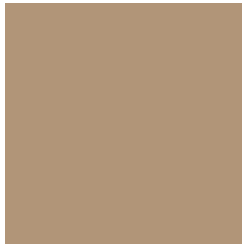


3354



# Previews

## White Background



This preview shows how the Decimal color 11638136 looks on a white background.

## Color Contrast Check

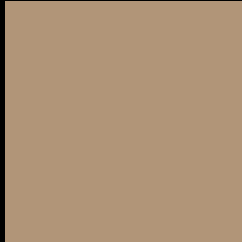
Large Text (above 18pt) WCAG AA × Fail

Any Text WCAG AA × Fail

Large Text (above 18pt) WCAG AAA × Fail

Any Text WCAG AAA × Fail

# Black Background



This preview shows how the Decimal color 11638136 looks on a black background.

## Color Contrast Check

Large Text (above 18pt) WCAG AA ✓ Pass

Any Text WCAG AA ✓ Pass

Large Text (above 18pt) WCAG AAA ✓ Pass

Any Text WCAG AAA ✓ Pass

If you want to check with other color combinations, try the [Color Contrast Checker](#).



## Decimal 11638136 Background



This preview shows how black text looks on a background with the Decimal color 11638136.



This preview shows how white text looks on a background with the Decimal color 11638136.

# Color Blindness Simulation

Color vision deficiency is a very complex topic, and I could not describe the different causes any better than Wikipedia does, so if you want to learn more, you should check out their [article about color blindness](#).

## Dichromacy



**Original Color**

11638136

**Protanopia**

10787450

**Deuteranopia**

11834488



**Tritanopia**  
11899035

# Trichromacy



**Original Color**  
11638136

**Protanomaly**  
11114617

**Deuteranomaly**  
11768952

**Tritanomaly**  
11833998

# Monochromacy



**Original Color**  
11638136

**Achromatopsia**  
10132122

**Achromatomaly**  
10655886

# CSS Examples

## Text

The CSS property to change the color of the text to Decimal 11638136 is called "color". The color property can be set on classes, ids or directly on the HTML element.

This example shows how text in the color #B19578 looks like.

```
.text, #text, p{  
    color:#B19578  
}
```

If you want to add a text shadow in that color use the text-shadow property, you can generate a text shadow directly with our [CSS Text Shadow Generator](#).

Here you see how black text with a 4 pixel #B19578 colored shadow looks like.

```
.shadow{ text-shadow: 4px 4px 2px #B19578
}
```

## Border

The CSS property to change the border of an element to Decimal 11638136 is called "border". The border property can be set on classes, ids or directly on the HTML element.

This example shows the color as border, it can be applied via the CSS property "border" or "border-color".

```
.border, #border, table{ border:4px solid
#B19578 }
```

If only the border color should be changed use the property `border-color`.

```
.border{ border-color:#B19578 }
```

If you want to add a box shadow in that color use:

Here you see how a box with a 4 pixel #B19578 colored shadow looks like.

```
.boxshadow{ -moz-box-shadow:4px 4px 4px  
4px #B19578; -webkit-box-shadow:4px 4px  
4px 4px #B19578; box-shadow:4px 4px 4px  
4px #B19578 }
```

# Background

The CSS property to change the background color of an element to Decimal 11638136 is called "background". The background property can be set on classes, ids or directly on the HTML element.

```
.background, #background, body{  
background:#B19578 }
```

If only the background color should be changed can be used:

```
.background{ background-color:#B19578 }
```

This example shows the color as background, it is applied via the CSS property "background".

To optimize and compress your CSS code, you can use our [online CSS compressor and optimizer](#) based on csstidy. If you want to create a linear or radial gradient as background or border, check our [CSS Gradient Generator](#).



Hey! You found this booklet interesting? Support Converting Colors with the new Membership Option!

The pro membership hides all ads, plus gives you double the colors in the color bucket, and more awesome pro features!

**[Learn more, Memberships starting at \\$2.50/m!](#)**

**Follow me  
on Twitter!**

@ConvertingColor