

Converting Colors

Decimal(11641263)

Have a look what the booklet for
Decimal(11641263) contains.

Decimal(11641263)	3
<i>Conversions</i>	4
<i>Details</i>	6
<i>Harmonies</i>	11
<i>Previews</i>	23
<i>Color Blindness Simulation</i>	26
<i>CSS Examples</i>	29

Color

Decimal(11641263)

Conversions

Conversions Part 1

Format	Color
Hex	B1A1AF
RGB	177, 161, 175
RGB Percent	69%, 63%, 69%
CMY	0.3059, 0.3686, 0.3137
CMYK	0.00, 0.09, 0.01, 0.31
HSL	308°, 9%, 66%
HSV	308°, 9%, 69%
XYZ	38.6142, 37.9320, 45.8439
YIQ	167.3800, 5.0420, 7.7460

Conversions

Conversions Part 2

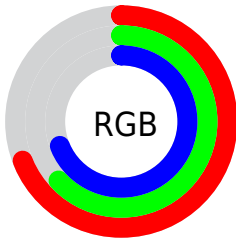
Format	Color
RYB	177, 161, 175
Decimal	11641263
CIELab	67.97, 8.37, -5.12
CIELCh	68, 9.818, 328.540
Yxy	37.9320, 0.3155, 0.3099
Android (android.graphics.Color)	4289831343 (0xFFB1A1AF)
YUV	167.3800, 3.7567, 8.4367
Hunter-Lab	61.5890, 4.1328, -1.0204

Details

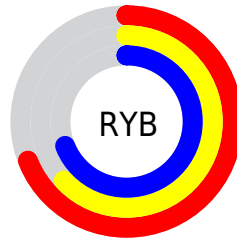
The Decimal color **11641263** is a light color, and the websafe version is hex **999999**. A complement of this color would be **10596771**, and the grayscale version is **10987431**.

A 20% lighter version of the original color is **15325415**, and **8154491** is the 20% darker color. If you saturate the color by 10%, you get **11636653**, and if you desaturate by 10%, it is **11645873**.

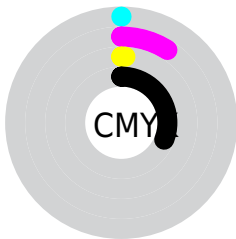
Distribution



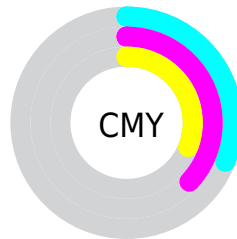
- Red (69%)
- Green (63%)
- Blue (69%)



- Red (69%)
- Yellow (63%)
- Blue (69%)



- Cyan (0%)
- Magenta (9%)
- Yellow (1%)
- Black (31%)



- Cyan (31%)
- Magenta (37%)
- Yellow (31%)

Brightness & Saturation Gradients

These gradients show how the Decimal color 11641263 changes by changing the brightness by 10 percent. The first figure shows a shift by +10% for each color and the second figure -10%.

Similar to the brightness gradients but the following saturation gradients show a change of the Decimal color 11641263 by changing the saturation by 10% instead.

■ 11641263

■ 11641263

16777215

■ 9865108

■ 15325415

■ 8154491

■ 16774399

■ 6509922

■ 4931146

■ 3483699

■ 2036766

■ 4

■ 0

■ 11641263

■ 11641263

 11636653

 11645873

 11632299

 11650227

 11627688

 11654838

 11623078

 11659448

 11618468

 11664058

 11614114

 11665340

 11609504

 11665342

 11604893

 11665345

 11600539

 11665347

Harmonies

Analogous

The Analogous color harmony consists of three colors that are next to each other on the color wheel.



10986677



11641263



12034214

Triad

The Triadic color harmony groups three colors that are evenly spaced from another and form a triangle on the color wheel.



11641263



11445652



9481134

Complementary

The Complementary color scheme is a pair of colors which are on the opposite of each other on the color wheel.



11641263



10596771

Split Complementary

Split-complementary colors differ from the complementary color scheme. The scheme consists of three colors, the original color and two neighbors of the complement color.



9612197



11641263



10791062

Square

The Square scheme is like the rectangle color scheme, but the four colors are evenly spaced on the color wheel.



11641263



11903639



10136220



9677236

Rectangle

The Rectangle color scheme consists of four colors that form a rectangle on the color wheel.



11641263



12165280



10136220



9481131

Sweetspot

The Sweet Spot groups the original color and five complimentary colors.



11641263



15130597



10723761



7564914



15921906



7566195

Same Dimension

The Same Dimension uses a secret algorithm to generate beautiful new colors.



11641263



15125730



11641255



5853272



10027142



1703958

Inverse Universe

The Inverse Universe completely reimagines the original color for something new.



11641263



15125730



10596779



5853272



10027142



1703958

Previews

White Background



This preview shows how the Decimal color 11641263 looks on a white background.

Color Contrast Check

Large Text (above 18pt) WCAG AA × Fail

Any Text WCAG AA × Fail

Large Text (above 18pt) WCAG AAA × Fail

Any Text WCAG AAA × Fail

Black Background



This preview shows how the Decimal color 11641263 looks on a black background.

Color Contrast Check

Large Text (above 18pt) WCAG AA ✓ Pass

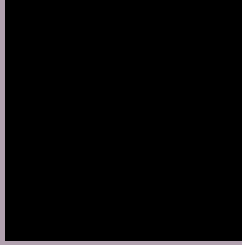
Any Text WCAG AA ✓ Pass

Large Text (above 18pt) WCAG AAA ✓ Pass

Any Text WCAG AAA ✓ Pass

If you want to check with other color combinations, try the [Color Contrast Checker](#).

Decimal 11641263 Background



This preview shows how black text looks on a background with the Decimal color 11641263.



This preview shows how white text looks on a background with the Decimal color 11641263.

Color Blindness Simulation

Color vision deficiency is a very complex topic, and I could not describe the different causes any better than Wikipedia does, so if you want to learn more, you should check out their [article about color blindness](#).

Dichromacy



Original Color
11641263

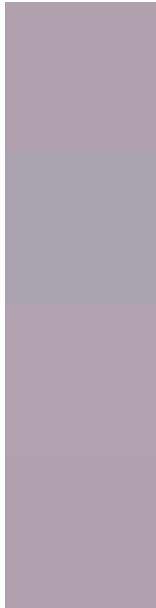
Protanopia
10855857

Deuteranopia
11706799



Tritanopia
11641262

Trichromacy



Original Color
11641263

Protanomaly
11117744

Deuteranomaly
11706799

Tritanomaly
11641262

Monochromacy



Original Color
11641263

Achromatopsia
10987431

Achromatomaly
11249066

CSS Examples

Text

The CSS property to change the color of the text to Decimal 11641263 is called "color". The color property can be set on classes, ids or directly on the HTML element.

This example shows how text in the color #B1A1AF looks like.

```
.text, #text, p{  
    color:#B1A1AF  
}
```

If you want to add a text shadow in that color use the text-shadow property, you can generate a text shadow directly with our [CSS Text Shadow Generator](#).

Here you see how black text with a 4 pixel #B1A1AF colored shadow looks like.

```
.shadow{ text-shadow: 4px 4px 2px #B1A1AF
}
```

Border

The CSS property to change the border of an element to Decimal 11641263 is called "border". The border property can be set on classes, ids or directly on the HTML element.

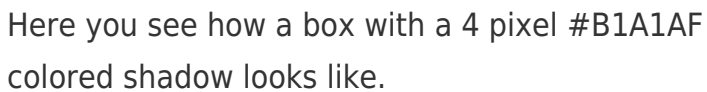
This example shows the color as border, it can be applied via the CSS property "border" or "border-color".

```
.border, #border, table{ border:4px solid
#B1A1AF }
```

If only the border color should be changed use the property `border-color`.

```
.border{ border-color:#B1A1AF }
```

If you want to add a box shadow in that color use:



Here you see how a box with a 4 pixel #B1A1AF colored shadow looks like.

```
.boxshadow{ -moz-box-shadow:4px 4px 4px  
4px #B1A1AF; -webkit-box-shadow:4px 4px  
4px 4px #B1A1AF; box-shadow:4px 4px 4px  
4px #B1A1AF }
```

Background

The CSS property to change the background color of an element to Decimal 11641263 is called "background". The background property can be set on classes, ids or directly on the HTML element.

```
.background, #background, body{  
background:#B1A1AF }
```

If only the background color should be changed can be used:

```
.background{ background-color:#B1A1AF }
```

This example shows the color as background, it is applied via the CSS property "background".

To optimize and compress your CSS code, you can use our [online CSS compressor and optimizer](#) based on csstidy. If you want to create a linear or radial gradient as background or border, check our [CSS Gradient Generator](#).

Hey! You found this booklet interesting? Support Converting Colors with the new Membership Option!

The pro membership hides all ads, plus gives you double the colors in the color bucket, and more awesome pro features!

[Learn more, Memberships starting at \\$2.50/m!](#)

**Follow me
on Twitter!**

@ConvertingColor