

Converting Colors

Decimal(11697731)

Have a look what the booklet for
Decimal(11697731) contains.

Decimal(11697731)	3
<i>Conversions</i>	4
<i>Details</i>	6
<i>Harmonies</i>	11
<i>Previews</i>	23
<i>Color Blindness Simulation</i>	26
<i>CSS Examples</i>	29

Color

Decimal(11697731)

Conversions

Conversions Part 1

Format	Color
Hex	B27E43
RGB	178, 126, 67
RGB Percent	70%, 49%, 26%
CMY	0.3020, 0.5059, 0.7373
CMYK	0.00, 0.29, 0.62, 0.30
HSL	32°, 45%, 48%
HSV	32°, 62%, 70%
XYZ	26.8341, 24.7919, 8.6812
YIQ	134.8220, 49.9310, -7.3250

Conversions

Conversions Part 2

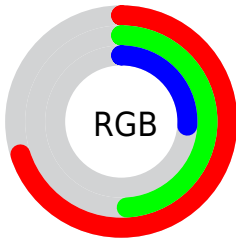
Format	Color
R_{YB}	165, 178, 67
Decimal	11697731
CIE _{Lab}	56.87, 13.91, 39.56
CIE _{LCh}	57, 41.934, 70.634
Yxy	24.7919, 0.4450, 0.4111
Android (android.graphics.Color)	4289887811 (0xFFB27E43)
YUV	134.8220, -33.4362, 37.8671
Hunter-Lab	49.7915, 9.0637, 24.5168

Details

The Decimal color **11697731** is a dark color, and the websafe version is hex **996633**. A complement of this color would be **4421554**, and the grayscale version is **8882055**.

A 20% lighter version of the original color is **15577973**, and **8015123** is the 20% darker color. If you saturate the color by 10%, you get **11695665**, and if you desaturate by 10%, it is **11699797**.

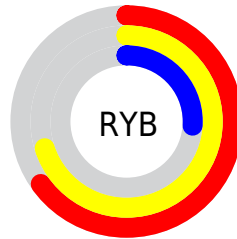
Distribution



Red (70%)

Green (49%)

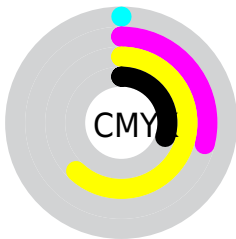
Blue (26%)



Red (65%)

Yellow (70%)

Blue (26%)

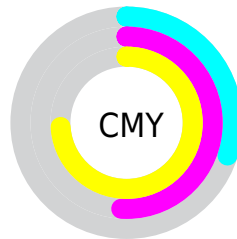


Cyan (0%)

Magenta (29%)

Yellow (62%)

Black (30%)



Cyan (30%)


Magenta (51%)

Yellow (74%)

Brightness & Saturation Gradients

These gradients show how the Decimal color 11697731 changes by changing the brightness by 10 percent. The first figure shows a shift by +10% for each color and the second figure -10%.

Similar to the brightness gradients but the following saturation gradients show a change of the Decimal color 11697731 by changing the saturation by 10% instead.

 11697731  11697731

16777215  9856299

 15577973  8015123

 16764559  6239744

 16771754  4464896

 16777157  2755584

 16777186  65536

 0

 11697731  11697731

 11695665  11699797

■ 11693343

■ 11702119

■ 11691278

■ 11704184

■ 11689728

■ 11706250

■ 11708572

■ 11710638

■ 11712704

■ 11715025

■ 11717091

Harmonies

Analogous

The Analogous color harmony consists of three colors that are next to each other on the color wheel.



13136219



11697731



9603902

Triad

The Triadic color harmony groups three colors that are evenly spaced from another and form a triangle on the color wheel.



11697731



39829



10255040

Complementary

The Complementary color scheme is a pair of colors which are on the opposite of each other on the color wheel.



11697731



4421554

Split Complementary

Split-complementary colors differ from the complementary color scheme. The scheme consists of three colors, the original color and two neighbors of the complement color.



6523088



11697731



39351

Square

The Square scheme is like the rectangle color scheme, but the four colors are evenly spaced on the color wheel.



11697731



3447151



37837



12611234

Rectangle

The Rectangle color scheme consists of four colors that form a rectangle on the color wheel.



11697731



7901511



37837



9207751

Sweetspot

The Sweet Spot groups the original color and five complimentary colors.



11697731



15258556



11682681



7694682



16119285



7697781

Same Dimension

The Same Dimension uses a secret algorithm to generate beautiful new colors.



11697731



15243066



11579971



5854544



10047744



1707520

Inverse Universe

The Inverse Universe completely reimagines the original color for something new.



4421554



3837160



4539314



5264729



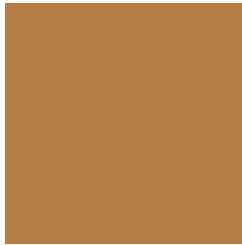
18585



3098

Previews

White Background



This preview shows how the Decimal color 11697731 looks on a white background.

Color Contrast Check

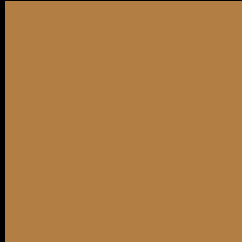
Large Text (above 18pt) WCAG AA ✓ Pass

Any Text WCAG AA × Fail

Large Text (above 18pt) WCAG AAA × Fail

Any Text WCAG AAA × Fail

Black Background



This preview shows how the Decimal color 11697731 looks on a black background.

Color Contrast Check

Large Text (above 18pt) WCAG AA ✓ Pass

Any Text WCAG AA ✓ Pass

Large Text (above 18pt) WCAG AAA ✓ Pass

Any Text WCAG AAA × Fail

If you want to check with other color combinations, try the [Color Contrast Checker](#).

Decimal 11697731 Background



This preview shows how black text looks on a background with the Decimal color 11697731.



This preview shows how white text looks on a background with the Decimal color 11697731.

Color Blindness Simulation

Color vision deficiency is a very complex topic, and I could not describe the different causes any better than Wikipedia does, so if you want to learn more, you should check out their [article about color blindness](#).


Dichromacy



Original Color
11697731

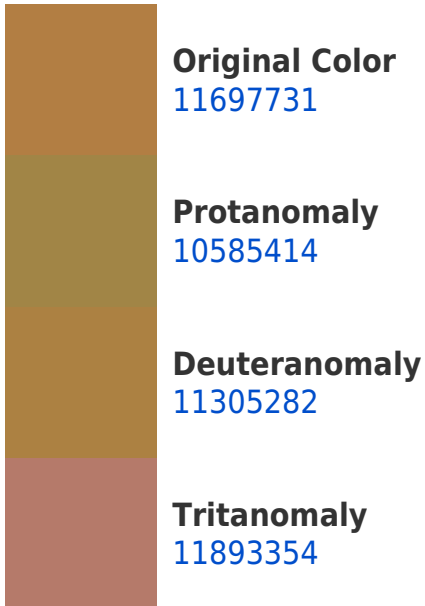
Protanopia
9931079

Deuteranopia
11108930

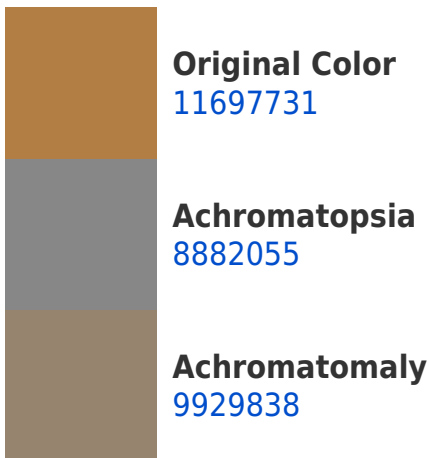


Tritanopia
11958144

Trichromacy



Monochromacy



CSS Examples

Text

The CSS property to change the color of the text to Decimal 11697731 is called "color". The color property can be set on classes, ids or directly on the HTML element.

This example shows how text in the color #B27E43 looks like.

```
.text, #text, p{  
    color:#B27E43  
}
```

If you want to add a text shadow in that color use the text-shadow property, you can generate a text shadow directly with our [CSS Text Shadow Generator](#).

Here you see how black text with a 4 pixel #B27E43 colored shadow looks like.

```
.shadow{ text-shadow: 4px 4px 2px #B27E43
}
```

Border

The CSS property to change the border of an element to Decimal 11697731 is called "border". The border property can be set on classes, ids or directly on the HTML element.

This example shows the color as border, it can be applied via the CSS property "border" or "border-color".

```
.border, #border, table{ border:4px solid
#B27E43 }
```

If only the border color should be changed use the property `border-color`.

```
.border{ border-color:#B27E43 }
```

If you want to add a box shadow in that color use:

Here you see how a box with a 4 pixel #B27E43 colored shadow looks like.

```
.boxshadow{ -moz-box-shadow:4px 4px 4px  
4px #B27E43; -webkit-box-shadow:4px 4px  
4px 4px #B27E43; box-shadow:4px 4px 4px  
4px #B27E43 }
```

Background

The CSS property to change the background color of an element to Decimal 11697731 is called "background". The background property can be set on classes, ids or directly on the HTML element.

```
.background, #background, body{  
background:#B27E43 }
```

If only the background color should be changed can be used:

```
.background{ background-color:#B27E43 }
```

This example shows the color as background, it is applied via the CSS property "background".

To optimize and compress your CSS code, you can use our [online CSS compressor and optimizer](#) based on csstidy. If you want to create a linear or radial gradient as background or border, check our [CSS Gradient Generator](#).

Hey! You found this booklet interesting? Support Converting Colors with the new Membership Option!

The pro membership hides all ads, plus gives you double the colors in the color bucket, and more awesome pro features!

[Learn more, Memberships starting at \\$2.50/m!](#)

**Follow me
on Twitter!**

@ConvertingColor