

Converting Colors

Decimal(11697775)

Have a look what the booklet for
Decimal(11697775) contains.

Decimal(11697775)	3
<i>Conversions</i>	4
<i>Details</i>	6
<i>Harmonies</i>	11
<i>Previews</i>	23
<i>Color Blindness Simulation</i>	26
<i>CSS Examples</i>	29

Color

Decimal(11697775)

Conversions

Conversions Part 1

Format	Color
Hex	B27E6F
RGB	178, 126, 111
RGB Percent	70%, 49%, 44%
CMY	0.3020, 0.5059, 0.5647
CMYK	0.00, 0.29, 0.38, 0.30
HSL	13°, 30%, 57%
HSV	13°, 38%, 70%
XYZ	28.6902, 25.5344, 18.4554
YIQ	139.8380, 35.8070, 6.3590

Conversions

Conversions Part 2

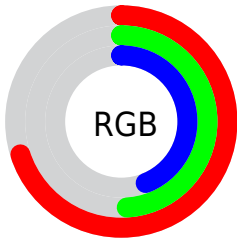
Format	Color
R_{YB}	178, 130, 111
Decimal	11697775
CIE _{Lab}	57.59, 18.20, 16.20
CIE _{LCh}	58, 24.362, 41.679
Yxy	25.5344, 0.3947, 0.3513
Android (android.graphics.Color)	4289887855 (0xFFB27E6F)
YUV	139.8380, -14.2171, 33.4681
Hunter-Lab	50.5316, 12.9163, 13.7179

Details

The Decimal color **11697775** is a dark color, and the websafe version is hex **996666**. A complement of this color would be **7316402**, and the grayscale version is **9211020**.

A 20% lighter version of the original color is **15446947**, and **8080703** is the 20% darker color. If you saturate the color by 10%, you get **11694173**, and if you desaturate by 10%, it is **11701377**.

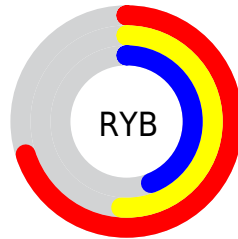
Distribution



Red (70%)

Green (49%)

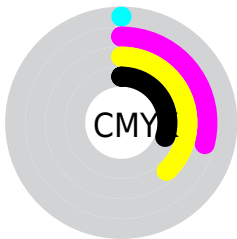
Blue (44%)



Red (70%)

Yellow (51%)

Blue (44%)

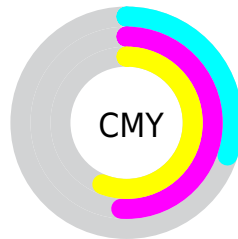


Cyan (0%)

Magenta (29%)

Yellow (38%)

Black (30%)



Cyan (30%)


Magenta (51%)

Yellow (56%)

Brightness & Saturation Gradients

These gradients show how the Decimal color 11697775 changes by changing the brightness by 10 percent. The first figure shows a shift by +10% for each color and the second figure -10%.

Similar to the brightness gradients but the following saturation gradients show a change of the Decimal color 11697775 by changing the saturation by 10% instead.

 11697775  11697775

16777215  9856343

 15446947  8080703

 16764862  6370601

 16772058  4726549

 16777206  3148288

 1179648

 0

 11697775  11697775

 11694173  11701377

■ 11690571

■ 11704979

■ 11687226

■ 11708324

■ 11683624

■ 11711926

■ 11680022

■ 11715528

■ 11676420

■ 11719130

■ 11675648

■ 11722732

■ 11726333

■ 11729663

Harmonies

Analogous

The Analogous color harmony consists of three colors that are next to each other on the color wheel.



11893635



11697775



10847586

Triad

The Triadic color harmony groups three colors that are evenly spaced from another and form a triangle on the color wheel.



11697775



6395260



8096180

Complementary

The Complementary color scheme is a pair of colors which are on the opposite of each other on the color wheel.



11697775



7316402

Split Complementary

Split-complementary colors differ from the complementary color scheme. The scheme consists of three colors, the original color and two neighbors of the complement color.



6131890



11697775



5084818

Square

The Square scheme is like the rectangle color scheme, but the four colors are evenly spaced on the color wheel.



11697775



7967338



4822438



9994922

Rectangle

The Rectangle color scheme consists of four colors that form a rectangle on the color wheel.



11697775



9996640



4822438



7441588

Sweetspot

The Sweet Spot groups the original color and five complimentary colors.



11697775



15258831



11693987



7694694



16119285



7697781

Same Dimension

The Same Dimension uses a secret algorithm to generate beautiful new colors.



11697775



15243136



11706223



5853776



10035712



1705472

Inverse Universe

The Inverse Universe completely reimagines the original color for something new.



7316402



8442344



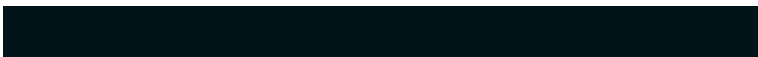
7307954



5265241



30617



5146

Previews

White Background



This preview shows how the Decimal color 11697775 looks on a white background.

Color Contrast Check

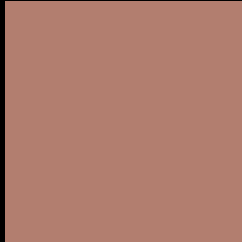
Large Text (above 18pt) WCAG AA ✓ Pass

Any Text WCAG AA × Fail

Large Text (above 18pt) WCAG AAA × Fail

Any Text WCAG AAA × Fail

Black Background



This preview shows how the Decimal color 11697775 looks on a black background.

Color Contrast Check

Large Text (above 18pt) WCAG AA ✓ Pass

Any Text WCAG AA ✓ Pass

Large Text (above 18pt) WCAG AAA ✓ Pass

Any Text WCAG AAA × Fail

If you want to check with other color combinations, try the [Color Contrast Checker](#).

Decimal 11697775 Background



This preview shows how black text looks on a background with the Decimal color 11697775.



This preview shows how white text looks on a background with the Decimal color 11697775.

Color Blindness Simulation

Color vision deficiency is a very complex topic, and I could not describe the different causes any better than Wikipedia does, so if you want to learn more, you should check out their [article about color blindness](#).

Dichromacy





Tritanopia
11828100

Trichromacy



Original Color
11697775

Protanomaly
10389107

Deuteranomaly
11043438

Tritanomaly
11762812

Monochromacy



Original Color
11697775

Achromatopsia
9211020

Achromatomaly
10127233

CSS Examples

Text

The CSS property to change the color of the text to Decimal 11697775 is called "color". The color property can be set on classes, ids or directly on the HTML element.

This example shows how text in the color #B27E6F looks like.

```
.text, #text, p{  
  color:#B27E6F  
}
```

If you want to add a text shadow in that color use the text-shadow property, you can generate a text shadow directly with our [CSS Text Shadow Generator](#).

Here you see how black text with a 4 pixel #B27E6F colored shadow looks like.

```
.shadow{ text-shadow: 4px 4px 2px #B27E6F  
}
```

Border

The CSS property to change the border of an element to Decimal 11697775 is called "border". The border property can be set on classes, ids or directly on the HTML element.

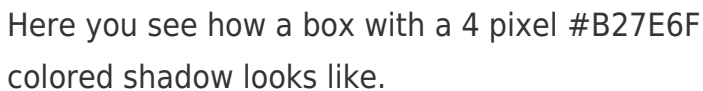
This example shows the color as border, it can be applied via the CSS property "border" or "border-color".

```
.border, #border, table{ border:4px solid  
#B27E6F }
```

If only the border color should be changed use the property `border-color`.

```
.border{ border-color:#B27E6F }
```

If you want to add a box shadow in that color use:



Here you see how a box with a 4 pixel #B27E6F colored shadow looks like.

```
.boxshadow{ -moz-box-shadow:4px 4px 4px  
4px #B27E6F; -webkit-box-shadow:4px 4px  
4px 4px #B27E6F; box-shadow:4px 4px 4px  
4px #B27E6F }
```

Background

The CSS property to change the background color of an element to Decimal 11697775 is called "background". The background property can be set on classes, ids or directly on the HTML element.

```
.background, #background, body{  
background:#B27E6F }
```

If only the background color should be changed can be used:

```
.background{ background-color:#B27E6F }
```

This example shows the color as background, it is applied via the CSS property "background".

To optimize and compress your CSS code, you can use our [online CSS compressor and optimizer](#) based on csstidy. If you want to create a linear or radial gradient as background or border, check our [CSS Gradient Generator](#).

Hey! You found this booklet interesting? Support Converting Colors with the new Membership Option!

The pro membership hides all ads, plus gives you double the colors in the color bucket, and more awesome pro features!

[Learn more, Memberships starting at \\$2.50/m!](#)

**Follow me
on Twitter!**

@ConvertingColor