

Converting Colors

Decimal(11698304)

Have a look what the booklet for
Decimal(11698304) contains.

Decimal(11698304)	3
<i>Conversions</i>	4
<i>Details</i>	6
<i>Harmonies</i>	11
<i>Previews</i>	23
<i>Color Blindness Simulation</i>	26
<i>CSS Examples</i>	29

Color

Decimal(11698304)

Conversions

Conversions Part 1

Format	Color
Hex	B28080
RGB	178, 128, 128
RGB Percent	70%, 50%, 50%
CMY	0.3020, 0.4980, 0.4980
CMYK	0.00, 0.28, 0.28, 0.30
HSL	0°, 25%, 60%
HSV	0°, 28%, 70%
XYZ	29.9756, 26.4618, 23.9498
YIQ	142.9500, 29.8000, 10.6000

Conversions

Conversions Part 2

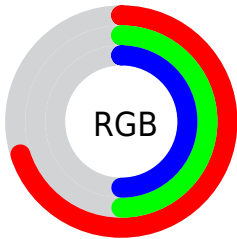
Format	Color
RYB	178, 128, 128
Decimal	11698304
CIELab	58.47, 19.34, 7.67
CIElCh	58, 20.803, 21.643
Yxy	26.4618, 0.3729, 0.3292
Android (android.graphics.Color)	4289888384 (0xFFB28080)
YUV	142.9500, -7.3704, 30.7388
Hunter-Lab	51.4411, 13.9930, 8.4046

Details

The Decimal color **11698304** is a light color, and the websafe version is hex **CC9999**. A complement of this color would be **8434354**, and the grayscale version is **9408399**.

A 20% lighter version of the original color is **15447477**, and **8146511** is the 20% darker color. If you saturate the color by 10%, you get **11693678**, and if you desaturate by 10%, it is **11702930**.

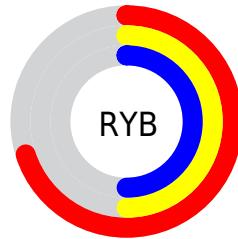
Distribution



Red (70%)

Green (50%)

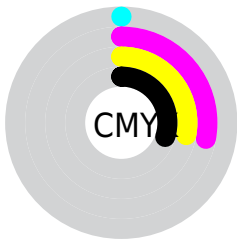
Blue (50%)



Red (70%)

Yellow (50%)

Blue (50%)

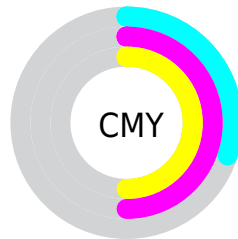


Cyan (0%)

Magenta (28%)

Yellow (28%)

Black (30%)



Cyan (30%)

Magenta (50%)

Yellow (50%)

Brightness & Saturation Gradients

These gradients show how the Decimal color 11698304 changes by changing the brightness by 10 percent. The first figure shows a shift by +10% for each color and the second figure -10%.

Similar to the brightness gradients but the following saturation gradients show a change of the Decimal color 11698304 by changing the saturation by 10% instead.

 11698304

 11698304

16777215

 9922407

 15447477

 8146511

 16765392

 6436664

 16772589

 4792611

 3214093

 1703937

 0

 11698304

 11698304

 11693678

 11702930

 11689052

 11707556

 11684683

 11711925

 11680057

 11716551

 11675431

 11721177

 11670805

 11725803

 11666179

 11730429

 11665408

 11730943

Harmonies

Analogous

The Analogous color harmony consists of three colors that are next to each other on the color wheel.



11436178



11698304



11306097

Triad

The Triadic color harmony groups three colors that are evenly spaced from another and form a triangle on the color wheel.



11698304



7836790



7377072

Complementary

The Complementary color scheme is a pair of colors which are on the opposite of each other on the color wheel.



11698304



8434354

Split Complementary

Split-complementary colors differ from the complementary color scheme. The scheme consists of three colors, the original color and two neighbors of the complement color.



6067369



11698304



6592391

Square

The Square scheme is like the rectangle color scheme, but the four colors are evenly spaced on the color wheel.



11698304



9212011



5805977



9013934

Rectangle

The Rectangle color scheme consists of four colors that form a rectangle on the color wheel.



11698304



10782826



5805977



6853295

Sweetspot

The Sweet Spot groups the original color and five complimentary colors.



11698304



15259093



11698354



7694954



16119285



7697781

Same Dimension

The Same Dimension uses a secret algorithm to generate beautiful new colors.



11698304



15243673



11704704



5853264



10027008



1703936

Inverse Universe

The Inverse Universe completely reimagines the original color for something new.



8434354



10086632



8427954



5265753



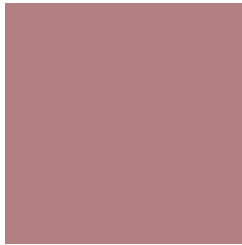
39321



6682

Previews

White Background



This preview shows how the Decimal color 11698304 looks on a white background.

Color Contrast Check

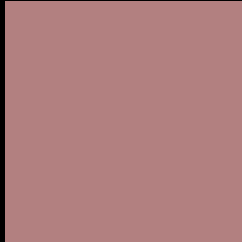
Large Text (above 18pt) WCAG AA ✓ Pass

Any Text WCAG AA ✗ Fail

Large Text (above 18pt) WCAG AAA ✗ Fail

Any Text WCAG AAA ✗ Fail

Black Background



This preview shows how the Decimal color 11698304 looks on a black background.

Color Contrast Check

Large Text (above 18pt) WCAG AA ✓ Pass

Any Text WCAG AA ✓ Pass

Large Text (above 18pt) WCAG AAA ✓ Pass

Any Text WCAG AAA × Fail

If you want to check with other color combinations, try the [Color Contrast Checker](#).

Decimal 11698304 Background



This preview shows how black text looks on a background with the Decimal color 11698304.



This preview shows how white text looks on a background with the Decimal color 11698304.

Color Blindness Simulation

Color vision deficiency is a very complex topic, and I could not describe the different causes any better than Wikipedia does, so if you want to learn more, you should check out their [article about color blindness](#).

Dichromacy





Tritanopia
11763592

Trichromacy



Original Color
11698304

Protanomaly
10324100

Deuteranomaly
10978687

Tritanomaly
11763589

Monochromacy



Original Color
11698304

Achromatopsia
9408399

Achromatomaly
10259082

CSS Examples

Text

The CSS property to change the color of the text to Decimal 11698304 is called "color". The color property can be set on classes, ids or directly on the HTML element.

This example shows how text in the color #B28080 looks like.

```
.text, #text, p{  
  color:#B28080  
}
```

If you want to add a text shadow in that color use the text-shadow property, you can generate a text shadow directly with our [CSS Text Shadow Generator](#).

Here you see how black text with a 4 pixel #B28080 colored shadow looks like.

```
.shadow{ text-shadow: 4px 4px 2px #B28080
}
```

Border

The CSS property to change the border of an element to Decimal 11698304 is called "border". The border property can be set on classes, ids or directly on the HTML element.

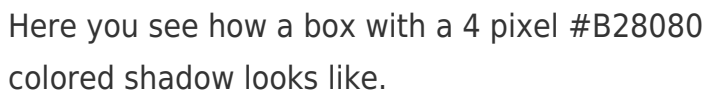
This example shows the color as border, it can be applied via the CSS property "border" or "border-color".

```
.border, #border, table{ border:4px solid
#B28080 }
```

If only the border color should be changed use the property `border-color`.

```
.border{ border-color:#B28080 }
```

If you want to add a box shadow in that color use:



Here you see how a box with a 4 pixel #B28080 colored shadow looks like.

```
.boxshadow{ -moz-box-shadow:4px 4px 4px  
4px #B28080; -webkit-box-shadow:4px 4px  
4px 4px #B28080; box-shadow:4px 4px 4px  
4px #B28080 }
```

Background

The CSS property to change the background color of an element to Decimal 11698304 is called "background". The background property can be set on classes, ids or directly on the HTML element.

```
.background, #background, body{  
background:#B28080 }
```

If only the background color should be changed can be used:

```
.background{ background-color:#B28080 }
```

This example shows the color as background, it is applied via the CSS property "background".

To optimize and compress your CSS code, you can use our [online CSS compressor and optimizer](#) based on csstidy. If you want to create a linear or radial gradient as background or border, check our [CSS Gradient Generator](#).

Hey! You found this booklet interesting? Support Converting Colors with the new Membership Option!

The pro membership hides all ads, plus gives you double the colors in the color bucket, and more awesome pro features!

[Learn more, Memberships starting at \\$2.50/m!](#)

**Follow me
on Twitter!**

@ConvertingColor