

Converting Colors

Decimal(11699020)

Have a look what the booklet for
Decimal(11699020) contains.

Decimal(11699020)	3
<i>Conversions</i>	4
<i>Details</i>	6
<i>Harmonies</i>	11
<i>Previews</i>	23
<i>Color Blindness Simulation</i>	26
<i>CSS Examples</i>	29

Color

Decimal(11699020)

Conversions

Conversions Part 1

Format	Color
Hex	B2834C
RGB	178, 131, 76
RGB Percent	70%, 51%, 30%
CMY	0.3020, 0.4863, 0.7020
CMYK	0.00, 0.26, 0.57, 0.30
HSL	32°, 40%, 50%
HSV	32°, 57%, 70%
XYZ	27.7809, 26.2194, 10.4341
YIQ	138.7830, 45.6670, -7.1410

Conversions

Conversions Part 2

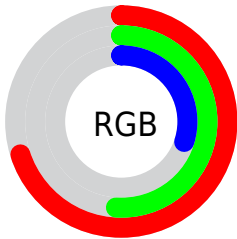
Format	Color
RYB	163, 178, 76
Decimal	11699020
CIELab	58.24, 11.80, 36.49
CIELCh	58, 38.347, 72.075
Yxy	26.2194, 0.4312, 0.4069
Android (android.graphics.Color)	4289889100 (0xFFB2834C)
YUV	138.7830, -30.9520, 34.3933
Hunter-Lab	51.2049, 7.2356, 23.7618

Details

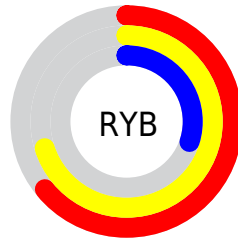
The Decimal color **11699020** is a dark color, and the websafe version is hex **CC9966**. A complement of this color would be **5012402**, and the grayscale version is **9145227**.

A 20% lighter version of the original color is **15513726**, and **8016413** is the 20% darker color. If you saturate the color by 10%, you get **11696954**, and if you desaturate by 10%, it is **11701086**.

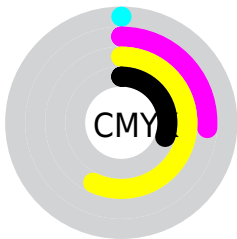
Distribution



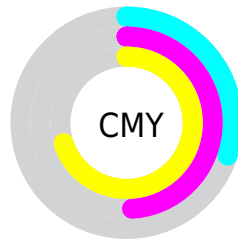
- Red (70%)
- Green (51%)
- Blue (30%)



- Red (64%)
- Yellow (70%)
- Blue (30%)



- Cyan (0%)
- Magenta (26%)
- Yellow (57%)
- Black (30%)



- Cyan (30%)
- Magenta (49%)
- Yellow (70%)

Brightness & Saturation Gradients

These gradients show how the Decimal color 11699020 changes by changing the brightness by 10 percent. The first figure shows a shift by +10% for each color and the second figure -10%.

Similar to the brightness gradients but the following saturation gradients show a change of the Decimal color 11699020 by changing the saturation by 10% instead.

 11699020

 11699020

16777215

 9857588

 15513726

 8016413

 16766105

 6241028

 16773300

 4531456

 16777167

 2887936

 16777196

 720896

 0

 11699020

 11699020

 11696954

 11701086

■ 11694888

■ 11703152

■ 11692567

■ 11705473

■ 11690501

■ 11707539

■ 11689984

■ 11709605

■ 11711671

■ 11713737

■ 11716058

■ 11718124

Harmonies

Analogous

The Analogous color harmony consists of three colors that are next to each other on the color wheel.



13006689



11699020



9735753

Triad

The Triadic color harmony groups three colors that are evenly spaced from another and form a triangle on the color wheel.



11699020



40601



10583742

Complementary

The Complementary color scheme is a pair of colors which are on the opposite of each other on the color wheel.



11699020



5012402

Split Complementary

Split-complementary colors differ from the complementary color scheme. The scheme consists of three colors, the original color and two neighbors of the complement color.



7310285



11699020



39864

Square

The Square scheme is like the rectangle color scheme, but the four colors are evenly spaced on the color wheel.



11699020



4299894



2266571



12612770

Rectangle

The Rectangle color scheme consists of four colors that form a rectangle on the color wheel.



11699020



8164689



2266571



9601733

Sweetspot

The Sweet Spot groups the original color and five complimentary colors.



11699020



15259329



11684988



7694942



16119285



7697781

Same Dimension

The Same Dimension uses a secret algorithm to generate beautiful new colors.



11699020



15244872



11514444



5854544



10048000



1707520

Inverse Universe

The Inverse Universe completely reimagines the original color for something new.



5012402



4756200



5196978



5264473



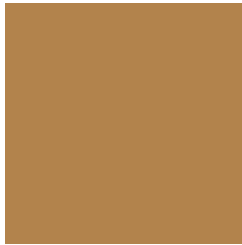
18329



3098

Previews

White Background



This preview shows how the Decimal color 11699020 looks on a white background.

Color Contrast Check

Large Text (above 18pt) WCAG AA ✓ Pass

Any Text WCAG AA × Fail

Large Text (above 18pt) WCAG AAA × Fail

Any Text WCAG AAA × Fail

Black Background



This preview shows how the Decimal color 11699020 looks on a black background.

Color Contrast Check

Large Text (above 18pt) WCAG AA ✓ Pass

Any Text WCAG AA ✓ Pass

Large Text (above 18pt) WCAG AAA ✓ Pass

Any Text WCAG AAA × Fail

If you want to check with other color combinations, try the [Color Contrast Checker](#).

Decimal 11699020 Background



This preview shows how black text looks on a background with the Decimal color 11699020.



This preview shows how white text looks on a background with the Decimal color 11699020.

Color Blindness Simulation

Color vision deficiency is a very complex topic, and I could not describe the different causes any better than Wikipedia does, so if you want to learn more, you should check out their [article about color blindness](#).

Dichromacy



Original Color
11699020

Protanopia
10128463

Deuteranopia
11306571



Tritanopia
12024966

Trichromacy



Original Color
11699020

Protanomaly
10717518

Deuteranomaly
11437387

Tritanomaly
11894641

Monochromacy



Original Color
11699020

Achromatopsia
9145227

Achromatomaly
10061940

CSS Examples

Text

The CSS property to change the color of the text to Decimal 11699020 is called "color". The color property can be set on classes, ids or directly on the HTML element.

This example shows how text in the color #B2834C looks like.

```
.text, #text, p{  
    color:#B2834C  
}
```

If you want to add a text shadow in that color use the text-shadow property, you can generate a text shadow directly with our [CSS Text Shadow Generator](#).

Here you see how black text with a 4 pixel #B2834C colored shadow looks like.

```
.shadow{ text-shadow: 4px 4px 2px #B2834C
}
```

Border

The CSS property to change the border of an element to Decimal 11699020 is called "border". The border property can be set on classes, ids or directly on the HTML element.

This example shows the color as border, it can be applied via the CSS property "border" or "border-color".

```
.border, #border, table{ border:4px solid
#B2834C }
```

If only the border color should be changed use the property `border-color`.

```
.border{ border-color:#B2834C }
```

If you want to add a box shadow in that color use:

Here you see how a box with a 4 pixel #B2834C colored shadow looks like.

```
.boxshadow{ -moz-box-shadow:4px 4px 4px  
4px #B2834C; -webkit-box-shadow:4px 4px  
4px 4px #B2834C; box-shadow:4px 4px 4px  
4px #B2834C }
```

Background

The CSS property to change the background color of an element to Decimal 11699020 is called "background". The background property can be set on classes, ids or directly on the HTML element.

```
.background, #background, body{  
background:#B2834C }
```

If only the background color should be changed can be used:

```
.background{ background-color:#B2834C }
```

This example shows the color as background, it is applied via the CSS property "background".

To optimize and compress your CSS code, you can use our [online CSS compressor and optimizer](#) based on csstidy. If you want to create a linear or radial gradient as background or border, check our [CSS Gradient Generator](#).

Hey! You found this booklet interesting? Support Converting Colors with the new Membership Option!

The pro membership hides all ads, plus gives you double the colors in the color bucket, and more awesome pro features!

[Learn more, Memberships starting at \\$2.50/m!](#)

**Follow me
on Twitter!**

@ConvertingColor