

# Converting Colors

Decimal(11699329)

Have a look what the booklet for  
Decimal(11699329) contains.

<b>Decimal(11699329)</b> .....	3
<i><b>Conversions</b></i> .....	4
<i><b>Details</b></i> .....	6
<i><b>Harmonies</b></i> .....	11
<i><b>Previews</b></i> .....	23
<i><b>Color Blindness Simulation</b></i> .....	26
<i><b>CSS Examples</b></i> .....	29

# **Color**

**Decimal(11699329)**

# Conversions

## Conversions Part 1

Format	Color
Hex	B28481
RGB	178, 132, 129
RGB Percent	70%, 52%, 51%
CMY	0.3020, 0.4824, 0.4941
CMYK	0.00, 0.26, 0.28, 0.30
HSL	4°, 24%, 60%
HSV	4°, 28%, 70%
XYZ	30.5738, 27.5525, 24.4756
YIQ	145.4120, 28.3790, 8.8190

# Conversions

## Conversions Part 2

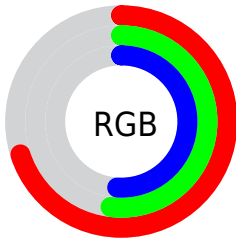
<b>Format</b>	<b>Color</b>
<b>RYB</b>	178, 132, 129
Decimal	11699329
CIELab	59.48, 17.23, 8.54
CIELCh	59, 19.233, 26.348
Yxy	27.5525, 0.3701, 0.3336
Android (android.graphics.Color)	4289889409 (0xFFB28481)
YUV	145.4120, -8.0911, 28.5797
Hunter-Lab	52.4905, 12.1115, 9.0972

# Details

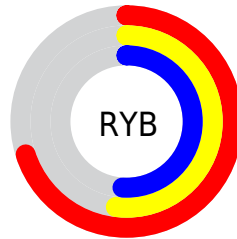
The Decimal color **11699329** is a light color, and the websafe version is hex **CC9999**. A complement of this color would be **8499122**, and the grayscale version is **9539985**.

A 20% lighter version of the original color is **15448502**, and **8147536** is the 20% darker color. If you saturate the color by 10%, you get **11694959**, and if you desaturate by 10%, it is **11703699**.

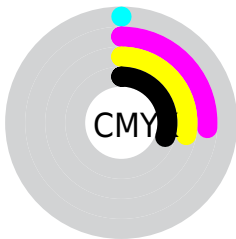
# Distribution



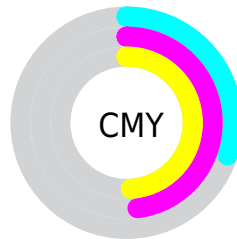
- Red (70%)
- Green (52%)
- Blue (51%)



- Red (70%)
- Yellow (52%)
- Blue (51%)



- Cyan (0%)
- Magenta (26%)
- Yellow (28%)
- Black (30%)



- Cyan (30%)
- Magenta (48%)
- Yellow (49%)

# Brightness & Saturation Gradients

These gradients show how the Decimal color 11699329 changes by changing the brightness by 10 percent. The first figure shows a shift by +10% for each color and the second figure -10%.

Similar to the brightness gradients but the following saturation gradients show a change of the Decimal color 11699329 by changing the saturation by 10% instead.



 11699329

 11699329

16777215

 9923432

 15448502

 8147536

 16766417

 6437689

 16773614

 4793636

 3280910

 1835009

 0

 11699329

 11699329

 11694959

 11703699

 11690845

 11707813

 11686476

 11712182

 11682106

 11716552

 11677736

 11720922

 11673622

 11725036

 11669252

 11729406

 11668224

 11730943

# Harmonies

## Analogous

The Analogous color harmony consists of three colors that are next to each other on the color wheel.



11502482



11699329



11307124

# Triad

The Triadic color harmony groups three colors that are evenly spaced from another and form a triangle on the color wheel.



11699329



7968636



7967153

# Complementary

The Complementary color scheme is a pair of colors which are on the opposite of each other on the color wheel.



11699329



8499122

# Split Complementary

Split-complementary colors differ from the complementary color scheme. The scheme consists of three colors, the original color and two neighbors of the complement color.



6723243



11699329



6855052

# Square

The Square scheme is like the rectangle color scheme, but the four colors are evenly spaced on the color wheel.



11699329



9212785



6330782



9407661

# Rectangle

The Rectangle color scheme consists of four colors that form a rectangle on the color wheel.



11699329



10718063



6330782



7443376



# Sweetspot

The Sweet Spot groups the original color and five complimentary colors.



11699329



15259605



11698608



7694954



16119285



7697781



# Same Dimension

The Same Dimension uses a secret algorithm to generate beautiful new colors.



11699329



15245467



11705473



5853520



10029312



1704448



# Inverse Universe

The Inverse Universe completely reimagines the original color for something new.



8499122



10216424



8492978



5265753



37017

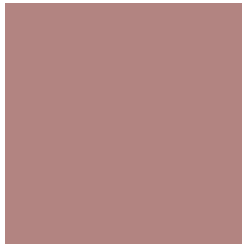


6170



# Previews

## White Background



This preview shows how the Decimal color 11699329 looks on a white background.

## Color Contrast Check

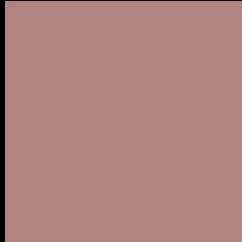
Large Text (above 18pt) WCAG AA ✓ Pass

Any Text WCAG AA ✗ Fail

Large Text (above 18pt) WCAG AAA ✗ Fail

Any Text WCAG AAA ✗ Fail

# Black Background



This preview shows how the Decimal color 11699329 looks on a black background.

## Color Contrast Check

Large Text (above 18pt) WCAG AA ✓ Pass

Any Text WCAG AA ✓ Pass

Large Text (above 18pt) WCAG AAA ✓ Pass

Any Text WCAG AAA × Fail

If you want to check with other color combinations, try the [Color Contrast Checker](#).



## Decimal 11699329 Background



This preview shows how black text looks on a background with the Decimal color 11699329.



This preview shows how white text looks on a background with the Decimal color 11699329.

# Color Blindness Simulation

Color vision deficiency is a very complex topic, and I could not describe the different causes any better than Wikipedia does, so if you want to learn more, you should check out their [article about color blindness](#).

## Dichromacy





**Tritanopia**  
11764364

# Trichromacy



**Original Color**  
11699329

**Protanomaly**  
10455941

**Deuteranomaly**  
11044992

**Tritanomaly**  
11764616

# Monochromacy



**Original Color**  
11699329

**Achromatopsia**  
9539985

**Achromatomaly**  
10325131

# CSS Examples

## Text

The CSS property to change the color of the text to Decimal 11699329 is called "color". The color property can be set on classes, ids or directly on the HTML element.

This example shows how text in the color #B28481 looks like.

```
.text, #text, p{  
    color:#B28481  
}
```

If you want to add a text shadow in that color use the text-shadow property, you can generate a text shadow directly with our [CSS Text Shadow Generator](#).

Here you see how black text with a 4 pixel #B28481 colored shadow looks like.

```
.shadow{ text-shadow: 4px 4px 2px #B28481
}
```

## Border

The CSS property to change the border of an element to Decimal 11699329 is called "border". The border property can be set on classes, ids or directly on the HTML element.

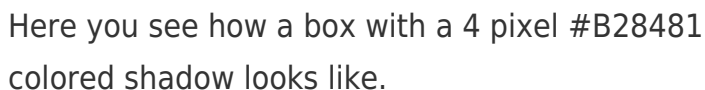
This example shows the color as border, it can be applied via the CSS property "border" or "border-color".

```
.border, #border, table{ border:4px solid
#B28481 }
```

If only the border color should be changed use the property `border-color`.

```
.border{ border-color:#B28481 }
```

If you want to add a box shadow in that color use:



Here you see how a box with a 4 pixel #B28481 colored shadow looks like.

```
.boxshadow{ -moz-box-shadow:4px 4px 4px  
4px #B28481; -webkit-box-shadow:4px 4px  
4px 4px #B28481; box-shadow:4px 4px 4px  
4px #B28481 }
```

# Background

The CSS property to change the background color of an element to Decimal 11699329 is called "background". The background property can be set on classes, ids or directly on the HTML element.

```
.background, #background, body{  
background:#B28481 }
```

If only the background color should be changed can be used:

```
.background{ background-color:#B28481 }
```

This example shows the color as background, it is applied via the CSS property "background".

To optimize and compress your CSS code, you can use our [online CSS compressor and optimizer](#) based on csstidy. If you want to create a linear or radial gradient as background or border, check our [CSS Gradient Generator](#).



Hey! You found this booklet interesting? Support Converting Colors with the new Membership Option!

The pro membership hides all ads, plus gives you double the colors in the color bucket, and more awesome pro features!

**[Learn more, Memberships starting at \\$2.50/m!](#)**

**Follow me  
on Twitter!**

@ConvertingColor