

Converting Colors

Decimal(11699556)

Have a look what the booklet for
Decimal(11699556) contains.

Decimal(11699556)	3
<i>Conversions</i>	4
<i>Details</i>	6
<i>Harmonies</i>	11
<i>Previews</i>	23
<i>Color Blindness Simulation</i>	26
<i>CSS Examples</i>	29

Color

Decimal(11699556)

Conversions

Conversions Part 1

Format	Color
Hex	B28564
RGB	178, 133, 100
RGB Percent	70%, 52%, 39%
CMY	0.3020, 0.4784, 0.6078
CMYK	0.00, 0.25, 0.44, 0.30
HSL	25°, 34%, 55%
HSV	25°, 44%, 70%
XYZ	29.0479, 27.1601, 15.7680
YIQ	142.6930, 37.4130, -0.7230

Conversions

Conversions Part 2

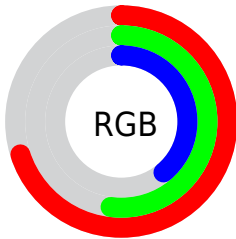
Format	Color
R_{YB}	178, 157, 100
Decimal	11699556
CIE _{Lab}	59.12, 12.99, 24.49
CIE _{LCh}	59, 27.725, 62.062
Yxy	27.1601, 0.4036, 0.3773
Android (android.graphics.Color)	4289889636 (0xFFB28564)
YUV	142.6930, -21.0476, 30.9642
Hunter-Lab	52.1154, 8.2897, 18.5420

Details

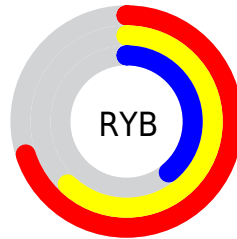
The Decimal color **11699556** is a dark color, and the websafe version is hex **CC9966**. A complement of this color would be **6590898**, and the grayscale version is **9408399**.

A 20% lighter version of the original color is **15448727**, and **8082229** is the 20% darker color. If you saturate the color by 10%, you get **11696978**, and if you desaturate by 10%, it is **11702134**.

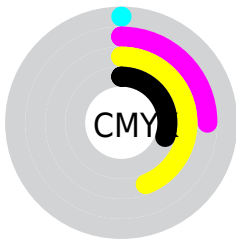
Distribution



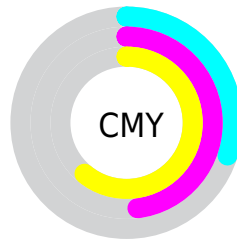
- Red (70%)
- Green (52%)
- Blue (39%)



- Red (70%)
- Yellow (62%)
- Blue (39%)



- Cyan (0%)
- Magenta (25%)
- Yellow (44%)
- Black (30%)



- Cyan (30%)
- Magenta (48%)
- Yellow (61%)

Brightness & Saturation Gradients

These gradients show how the Decimal color 11699556 changes by changing the brightness by 10 percent. The first figure shows a shift by +10% for each color and the second figure -10%.

Similar to the brightness gradients but the following saturation gradients show a change of the Decimal color 11699556 by changing the saturation by 10% instead.

 11699556

 11699556

16777215

 9858124

 15448727

 8082229

 16766642

 6372383

 16773838

 4662792

 16777194

 3084800

 1376256

 0

 11699556

 11699556

 11696978

 11702134

■ 11694144

■ 11704968

■ 11691567

■ 11707545

■ 11688989

■ 11710123

■ 11686411

■ 11712701

■ 11684608

■ 11715535

■ 11718113

■ 11720690

■ 11723263

Harmonies

Analogous

The Analogous color harmony consists of three colors that are next to each other on the color wheel.



12484214



11699556



10390877

Triad

The Triadic color harmony groups three colors that are evenly spaced from another and form a triangle on the color wheel.



11699556



4955279



9734072

Complementary

The Complementary color scheme is a pair of colors which are on the opposite of each other on the color wheel.



11699556



6590898

Split Complementary

Split-complementary colors differ from the complementary color scheme. The scheme consists of three colors, the original color and two neighbors of the complement color.



7377087



11699556



4037543

Square

The Square scheme is like the rectangle color scheme, but the four colors are evenly spaced on the color wheel.



11699556



6789751



5085113



11501734

Rectangle

The Rectangle color scheme consists of four colors that form a rectangle on the color wheel.



11699556



9278049



5085113



9013947

Sweetspot

The Sweet Spot groups the original color and five complimentary colors.



11699556



15259594



11691154



7694947



16119285



7697781

Same Dimension

The Same Dimension uses a secret algorithm to generate beautiful new colors.



11699556



15245677



11709540



5854288



10043648



1706752

Inverse Universe

The Inverse Universe completely reimagines the original color for something new.



6590898



7189736



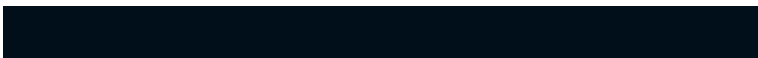
6580914



5264729



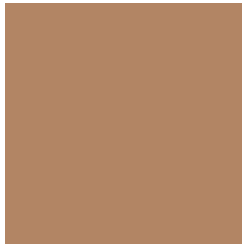
22681



3866

Previews

White Background



This preview shows how the Decimal color 11699556 looks on a white background.

Color Contrast Check

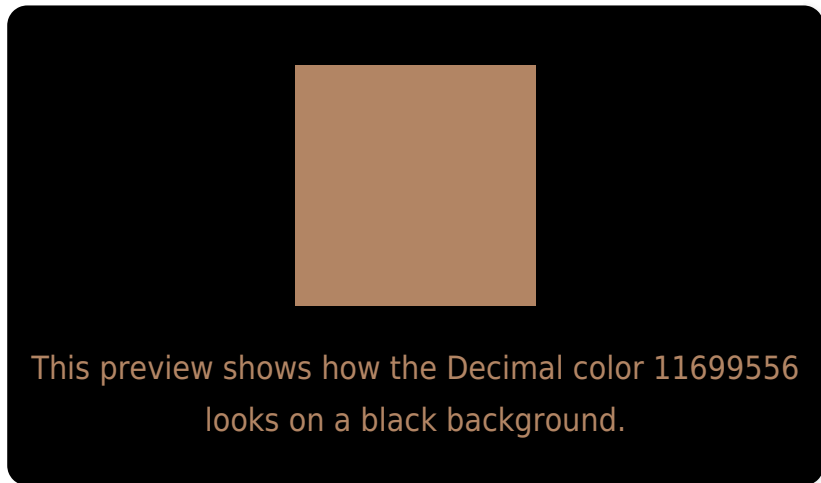
Large Text (above 18pt) WCAG AA ✓ Pass

Any Text WCAG AA × Fail

Large Text (above 18pt) WCAG AAA × Fail

Any Text WCAG AAA × Fail

Black Background



Color Contrast Check

Large Text (above 18pt) WCAG AA ✓ Pass

Any Text WCAG AA ✓ Pass

Large Text (above 18pt) WCAG AAA ✓ Pass

Any Text WCAG AAA × Fail

If you want to check with other color combinations, try the [Color Contrast Checker](#).

Decimal 11699556 Background



This preview shows how black text looks on a background with the Decimal color 11699556.




This preview shows how white text looks on a background with the Decimal color 11699556.

Color Blindness Simulation

Color vision deficiency is a very complex topic, and I could not describe the different causes any better than Wikipedia does, so if you want to learn more, you should check out their [article about color blindness](#).

Dichromacy





Tritanopia
11894922

Trichromacy



Original Color
11699556

Protanomaly
10652519

Deuteranomaly
11372387

Tritanomaly
11829884

Monochromacy



Original Color
11699556

Achromatopsia
9408399

Achromatomaly
10259327

CSS Examples

Text

The CSS property to change the color of the text to Decimal 11699556 is called "color". The color property can be set on classes, ids or directly on the HTML element.

This example shows how text in the color #B28564 looks like.

```
.text, #text, p{  
    color:#B28564  
}
```

If you want to add a text shadow in that color use the text-shadow property, you can generate a text shadow directly with our [CSS Text Shadow Generator](#).

Here you see how black text with a 4 pixel #B28564 colored shadow looks like.

```
.shadow{ text-shadow: 4px 4px 2px #B28564
}
```

Border

The CSS property to change the border of an element to Decimal 11699556 is called "border". The border property can be set on classes, ids or directly on the HTML element.

This example shows the color as border, it can be applied via the CSS property "border" or "border-color".

```
.border, #border, table{ border:4px solid
#B28564 }
```

If only the border color should be changed use the property `border-color`.

```
.border{ border-color:#B28564 }
```

If you want to add a box shadow in that color use:

Here you see how a box with a 4 pixel #B28564 colored shadow looks like.

```
.boxshadow{ -moz-box-shadow:4px 4px 4px  
4px #B28564; -webkit-box-shadow:4px 4px  
4px 4px #B28564; box-shadow:4px 4px 4px  
4px #B28564 }
```

Background

The CSS property to change the background color of an element to Decimal 11699556 is called "background". The background property can be set on classes, ids or directly on the HTML element.

```
.background, #background, body{  
background:#B28564 }
```

If only the background color should be changed can be used:

```
.background{ background-color:#B28564 }
```

This example shows the color as background, it is applied via the CSS property "background".

To optimize and compress your CSS code, you can use our [online CSS compressor and optimizer](#) based on csstidy. If you want to create a linear or radial gradient as background or border, check our [CSS Gradient Generator](#).

Hey! You found this booklet interesting? Support Converting Colors with the new Membership Option!

The pro membership hides all ads, plus gives you double the colors in the color bucket, and more awesome pro features!

[Learn more, Memberships starting at \\$2.50/m!](#)

**Follow me
on Twitter!**

@ConvertingColor