

Converting Colors

Decimal(11699801)

Have a look what the booklet for
Decimal(11699801) contains.

Decimal(11699801)	3
<i>Conversions</i>	4
<i>Details</i>	6
<i>Harmonies</i>	11
<i>Previews</i>	23
<i>Color Blindness Simulation</i>	26
<i>CSS Examples</i>	29

Color

Decimal(11699801)

Conversions

Conversions Part 1

Format	Color
Hex	B28659
RGB	178, 134, 89
RGB Percent	70%, 53%, 35%
CMY	0.3020, 0.4745, 0.6510
CMYK	0.00, 0.25, 0.50, 0.30
HSL	30°, 37%, 52%
HSV	30°, 50%, 70%
XYZ	28.6884, 27.2364, 13.1963
YIQ	142.0260, 40.6690, -4.6670

Conversions

Conversions Part 2

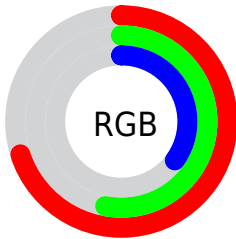
Format	Color
RYB	176, 178, 89
Decimal	11699801
CIELab	59.19, 11.29, 30.67
CIELCh	59, 32.679, 69.787
Yxy	27.2364, 0.4150, 0.3940
Android (android.graphics.Color)	4289889881 (0xFFB28659)
YUV	142.0260, -26.1418, 31.5492
Hunter-Lab	52.1885, 6.7926, 21.5400

Details

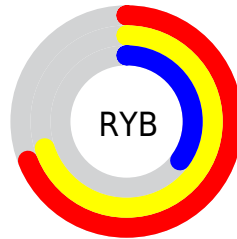
The Decimal color **11699801** is a dark color, and the websafe version is hex **CC9966**. A complement of this color would be **5866930**, and the grayscale version is **9342606**.

A 20% lighter version of the original color is **15514508**, and **8082474** is the 20% darker color. If you saturate the color by 10%, you get **11697479**, and if you desaturate by 10%, it is **11702123**.

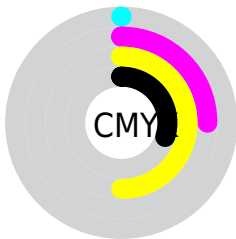
Distribution



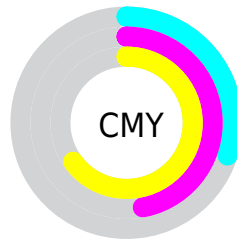
- Red (70%)
- Green (53%)
- Blue (35%)



- Red (69%)
- Yellow (70%)
- Blue (35%)



- Cyan (0%)
- Magenta (25%)
- Yellow (50%)
- Black (30%)



- Cyan (30%)
- Magenta (47%)
- Yellow (65%)

Brightness & Saturation Gradients

These gradients show how the Decimal color 11699801 changes by changing the brightness by 10 percent. The first figure shows a shift by +10% for each color and the second figure -10%.

Similar to the brightness gradients but the following saturation gradients show a change of the Decimal color 11699801 by changing the saturation by 10% instead.

 11699801

 11699801

16777215

 9858369

 15514508

 8082474

 16766886

 6307092

 16774082

 4663040

 16777182

 2953984

 16777210

 1179648

 0

 11699801

 11699801

 11697479

 11702123

■ 11695157

■ 11704445

■ 11693092

■ 11706510

■ 11690770

■ 11708832

■ 11688448

■ 11711154

■ 11713476

■ 11715798

■ 11717863

■ 11720185

Harmonies

Analogous

The Analogous color harmony consists of three colors that are next to each other on the color wheel.



12811627



11699801



9998421

Triad

The Triadic color harmony groups three colors that are evenly spaced from another and form a triangle on the color wheel.



11699801



2989719



10388667

Complementary

The Complementary color scheme is a pair of colors which are on the opposite of each other on the color wheel.



11699801



5866930

Split Complementary

Split-complementary colors differ from the complementary color scheme. The scheme consists of three colors, the original color and two neighbors of the complement color.



7704263



11699801



1547442

Square

The Square scheme is like the rectangle color scheme, but the four colors are evenly spaced on the color wheel.



11699801



5610618



4429764



12221347

Rectangle

The Rectangle color scheme consists of four colors that form a rectangle on the color wheel.



11699801



8688988



4429764



9537472

Sweetspot

The Sweet Spot groups the original color and five complimentary colors.



11699801



15259589



11688325



7695200



16119285



7697781

Same Dimension

The Same Dimension uses a secret algorithm to generate beautiful new colors.



11699801



15246173



11711065



5854544



10046720



1707264

Inverse Universe

The Inverse Universe completely reimagines the original color for something new.



5866930



6136552



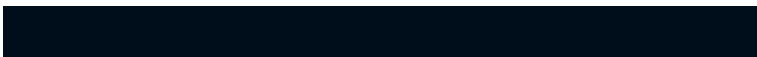
5855666



5264729



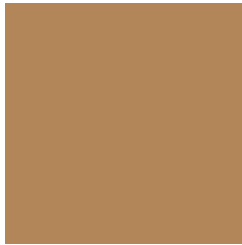
19609



3354

Previews

White Background



This preview shows how the Decimal color 11699801 looks on a white background.

Color Contrast Check

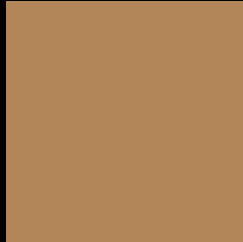
Large Text (above 18pt) WCAG AA ✓ Pass

Any Text WCAG AA × Fail

Large Text (above 18pt) WCAG AAA × Fail

Any Text WCAG AAA × Fail

Black Background



This preview shows how the Decimal color 11699801 looks on a black background.

Color Contrast Check

Large Text (above 18pt) WCAG AA ✓ Pass

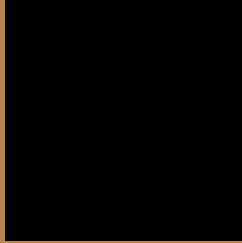
Any Text WCAG AA ✓ Pass

Large Text (above 18pt) WCAG AAA ✓ Pass

Any Text WCAG AAA × Fail

If you want to check with other color combinations, try the [Color Contrast Checker](#).

Decimal 11699801 Background



This preview shows how black text looks on a background with the Decimal color 11699801.



This preview shows how white text looks on a background with the Decimal color 11699801.

Color Blindness Simulation

Color vision deficiency is a very complex topic, and I could not describe the different causes any better than Wikipedia does, so if you want to learn more, you should check out their [article about color blindness](#).

Dichromacy



Original Color

11699801

Protanopia

10194780

Deuteranopia

11372633



Tritanopia
11960458

Trichromacy



Original Color
11699801

Protanomaly
10718299

Deuteranomaly
11503449

Tritanomaly
11895416

Monochromacy



Original Color
11699801

Achromatopsia
9342606

Achromatomaly
10193787

CSS Examples

Text

The CSS property to change the color of the text to Decimal 11699801 is called "color". The color property can be set on classes, ids or directly on the HTML element.

This example shows how text in the color #B28659 looks like.

```
.text, #text, p{  
    color:#B28659  
}
```

If you want to add a text shadow in that color use the text-shadow property, you can generate a text shadow directly with our [CSS Text Shadow Generator](#).

Here you see how black text with a 4 pixel #B28659 colored shadow looks like.

```
.shadow{ text-shadow: 4px 4px 2px #B28659
}
```

Border

The CSS property to change the border of an element to Decimal 11699801 is called "border". The border property can be set on classes, ids or directly on the HTML element.

This example shows the color as border, it can be applied via the CSS property "border" or "border-color".

```
.border, #border, table{ border:4px solid
#B28659 }
```

If only the border color should be changed use the property `border-color`.

```
.border{ border-color:#B28659 }
```

If you want to add a box shadow in that color use:

Here you see how a box with a 4 pixel #B28659 colored shadow looks like.

```
.boxshadow{ -moz-box-shadow:4px 4px 4px  
4px #B28659; -webkit-box-shadow:4px 4px  
4px 4px #B28659; box-shadow:4px 4px 4px  
4px #B28659 }
```

Background

The CSS property to change the background color of an element to Decimal 11699801 is called "background". The background property can be set on classes, ids or directly on the HTML element.

```
.background, #background, body{  
background:#B28659 }
```

If only the background color should be changed can be used:

```
.background{ background-color:#B28659 }
```

This example shows the color as background, it is applied via the CSS property "background".

To optimize and compress your CSS code, you can use our [online CSS compressor and optimizer](#) based on csstidy. If you want to create a linear or radial gradient as background or border, check our [CSS Gradient Generator](#).

Hey! You found this booklet interesting? Support Converting Colors with the new Membership Option!

The pro membership hides all ads, plus gives you double the colors in the color bucket, and more awesome pro features!

[Learn more, Memberships starting at \\$2.50/m!](#)

**Follow me
on Twitter!**

@ConvertingColor