

Converting Colors

Decimal(11700088)

Have a look what the booklet for
Decimal(11700088) contains.

Decimal(11700088)	3
<i>Conversions</i>	4
<i>Details</i>	6
<i>Harmonies</i>	11
<i>Previews</i>	23
<i>Color Blindness Simulation</i>	26
<i>CSS Examples</i>	29

Color

Decimal(11700088)

Conversions

Conversions Part 1

Format	Color
Hex	B28778
RGB	178, 135, 120
RGB Percent	70%, 53%, 47%
CMY	0.3020, 0.4706, 0.5294
CMYK	0.00, 0.24, 0.33, 0.30
HSL	16°, 27%, 58%
HSV	16°, 33%, 70%
XYZ	30.4142, 28.1490, 21.5996
YIQ	146.1470, 30.4430, 4.4510

Conversions

Conversions Part 2

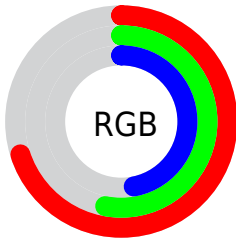
Format	Color
R_{YB}	178, 140, 120
Decimal	11700088
CIE _{Lab}	60.02, 14.31, 14.43
CIE _{LCh}	60, 20.321, 45.249
Yxy	28.1490, 0.3794, 0.3511
Android (android.graphics.Color)	4289890168 (0xFFB28778)
YUV	146.1470, -12.8905, 27.9351
Hunter-Lab	53.0556, 9.4781, 13.0012

Details

The Decimal color **11700088** is a dark color, and the websafe version is hex **CC9999**. A complement of this color would be **7906226**, and the grayscale version is **9605778**.

A 20% lighter version of the original color is **15449260**, and **8148295** is the 20% darker color. If you saturate the color by 10%, you get **11696742**, and if you desaturate by 10%, it is **11703434**.

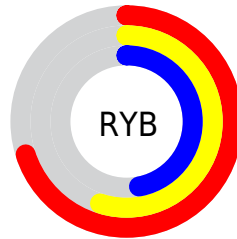
Distribution



Red (70%)

Green (53%)

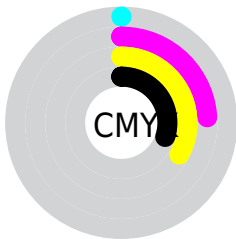
Blue (47%)



Red (70%)

Yellow (55%)

Blue (47%)

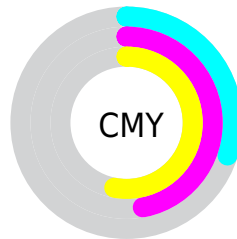


Cyan (0%)

Magenta (24%)

Yellow (33%)

Black (30%)



Cyan (30%)

Magenta (47%)

Yellow (53%)

Brightness & Saturation Gradients

These gradients show how the Decimal color 11700088 changes by changing the brightness by 10 percent. The first figure shows a shift by +10% for each color and the second figure -10%.

Similar to the brightness gradients but the following saturation gradients show a change of the Decimal color 11700088 by changing the saturation by 10% instead.

 11700088

 11700088

16777215

 9924191

 15449260

 8148295

 16767176

 6438449

 16774628


 4794396

 3281666

 1835009

 0

 11700088

 11700088

 11696742

 11703434

■ 11693396

■ 11706780

■ 11689795

■ 11710381

■ 11686449

■ 11713727

■ 11683103

■ 11717073

■ 11679757

■ 11720419

■ 11677184

■ 11723765

■ 11727359

■ 11730687

Harmonies

Analogous

The Analogous color harmony consists of three colors that are next to each other on the color wheel.



11895944



11700088



10914926

Triad

The Triadic color harmony groups three colors that are evenly spaced from another and form a triangle on the color wheel.



11700088



7182983



8949683

Complementary

The Complementary color scheme is a pair of colors which are on the opposite of each other on the color wheel.



11700088



7906226

Split Complementary

Split-complementary colors differ from the complementary color scheme. The scheme consists of three colors, the original color and two neighbors of the complement color.



7378355



1170088



6265753

Square

The Square scheme is like the rectangle color scheme, but the four colors are evenly spaced on the color wheel.



11700088



8427383



6330793



10455466

Rectangle

The Rectangle color scheme consists of four colors that form a rectangle on the color wheel.



1170088



10195053



6330793



8425908

Sweetspot

The Sweet Spot groups the original color and five complimentary colors.



11700088



15259601



11696291



7695207



16119285



7697781

Same Dimension

The Same Dimension uses a secret algorithm to generate beautiful new colors.



11700088



15246734



11707256



5854032



10037248



1705728

Inverse Universe

The Inverse Universe completely reimagines the original color for something new.



7906226



9359848



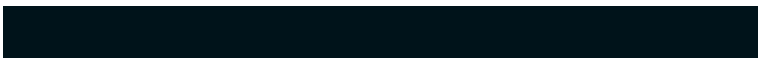
7899058



5265241



29081



4890

Previews

White Background



This preview shows how the Decimal color 11700088 looks on a white background.

Color Contrast Check

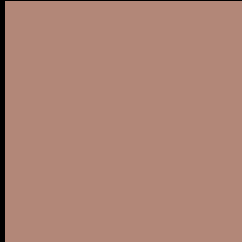
Large Text (above 18pt) WCAG AA ✓ Pass

Any Text WCAG AA × Fail

Large Text (above 18pt) WCAG AAA × Fail

Any Text WCAG AAA × Fail

Black Background



This preview shows how the Decimal color 11700088 looks on a black background.

Color Contrast Check

Large Text (above 18pt) WCAG AA ✓ Pass

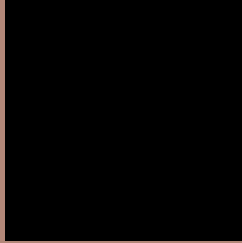
Any Text WCAG AA ✓ Pass

Large Text (above 18pt) WCAG AAA ✓ Pass

Any Text WCAG AAA × Fail

If you want to check with other color combinations, try the [Color Contrast Checker](#).

Decimal 11700088 Background



This preview shows how black text looks on a background with the Decimal color 11700088.

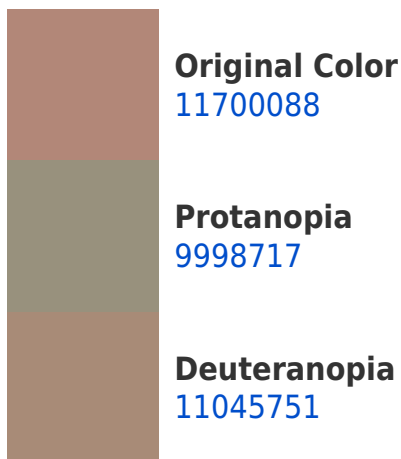


This preview shows how white text looks on a background with the Decimal color 11700088.

Color Blindness Simulation

Color vision deficiency is a very complex topic, and I could not describe the different causes any better than Wikipedia does, so if you want to learn more, you should check out their [article about color blindness](#).

Dichromacy





Tritanopia
11830414

Trichromacy



Original Color
11700088

Protanomaly
10587515

Deuteranomaly
11307639

Tritanomaly
11765126

Monochromacy



Original Color
11700088

Achromatopsia
9605778

Achromatomaly
10391177

CSS Examples

Text

The CSS property to change the color of the text to Decimal 11700088 is called "color". The color property can be set on classes, ids or directly on the HTML element.

This example shows how text in the color #B28778 looks like.

```
.text, #text, p{  
  color:#B28778  
}
```

If you want to add a text shadow in that color use the text-shadow property, you can generate a text shadow directly with our [CSS Text Shadow Generator](#).

Here you see how black text with a 4 pixel #B28778 colored shadow looks like.

```
.shadow{ text-shadow: 4px 4px 2px #B28778 } }
```

Border

The CSS property to change the border of an element to Decimal 11700088 is called "border". The border property can be set on classes, ids or directly on the HTML element.

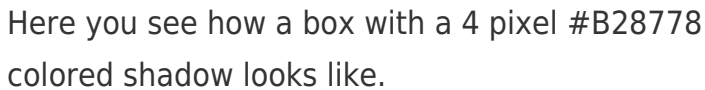
This example shows the color as border, it can be applied via the CSS property "border" or "border-color".

```
.border, #border, table{ border:4px solid #B28778 } }
```

If only the border color should be changed use the property `border-color`.

```
.border{ border-color:#B28778 }
```

If you want to add a box shadow in that color use:



Here you see how a box with a 4 pixel `#B28778` colored shadow looks like.

```
.boxshadow{ -moz-box-shadow:4px 4px 4px  
4px #B28778; -webkit-box-shadow:4px 4px  
4px 4px #B28778; box-shadow:4px 4px 4px  
4px #B28778 }
```

Background

The CSS property to change the background color of an element to Decimal 11700088 is called "background". The background property can be set on classes, ids or directly on the HTML element.

```
.background, #background, body{  
background:#B28778 }
```

If only the background color should be changed can be used:

```
.background{ background-color:#B28778 }
```

This example shows the color as background, it is applied via the CSS property "background".

To optimize and compress your CSS code, you can use our [online CSS compressor and optimizer](#) based on csstidy. If you want to create a linear or radial gradient as background or border, check our [CSS Gradient Generator](#).

Hey! You found this booklet interesting? Support Converting Colors with the new Membership Option!

The pro membership hides all ads, plus gives you double the colors in the color bucket, and more awesome pro features!

[Learn more, Memberships starting at \\$2.50/m!](#)

**Follow me
on Twitter!**

@ConvertingColor