

Converting Colors

Decimal(11700310)

Have a look what the booklet for
Decimal(11700310) contains.

Decimal(11700310)	3
<i>Conversions</i>	4
<i>Details</i>	6
<i>Harmonies</i>	11
<i>Previews</i>	23
<i>Color Blindness Simulation</i>	26
<i>CSS Examples</i>	29

Color

Decimal(11700310)

Conversions

Conversions Part 1

Format	Color
Hex	B28856
RGB	178, 136, 86
RGB Percent	70%, 53%, 34%
CMY	0.3020, 0.4667, 0.6627
CMYK	0.00, 0.24, 0.52, 0.30
HSL	33°, 37%, 52%
HSV	33°, 52%, 70%
XYZ	28.8440, 27.7452, 12.6392
YIQ	142.8580, 41.0820, -6.6460

Conversions

Conversions Part 2

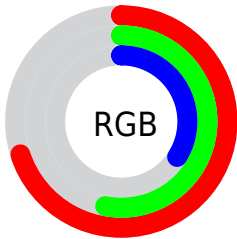
Format	Color
RYB	163, 178, 86
Decimal	11700310
CIELab	59.66, 9.89, 32.88
CIElCh	60, 34.337, 73.259
Yxy	27.7452, 0.4166, 0.4008
Android (android.graphics.Color)	4289890390 (0xFFB28856)
YUV	142.8580, -28.0310, 30.8195
Hunter-Lab	52.6737, 5.5671, 22.6448

Details

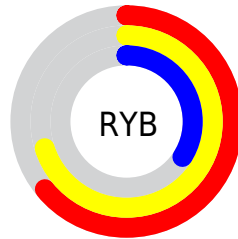
The Decimal color **11700310** is a dark color, and the websafe version is hex **CC9966**. A complement of this color would be **5669042**, and the grayscale version is **9408399**.

A 20% lighter version of the original color is **15515017**, and **8082983** is the 20% darker color. If you saturate the color by 10%, you get **11698244**, and if you desaturate by 10%, it is **11702376**.

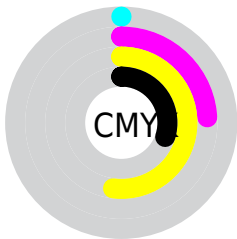
Distribution



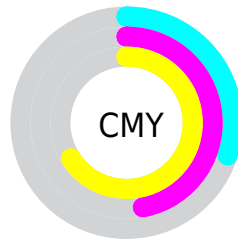
- Red (70%)
- Green (53%)
- Blue (34%)



- Red (64%)
- Yellow (70%)
- Blue (34%)



- Cyan (0%)
- Magenta (24%)
- Yellow (52%)
- Black (30%)



- Cyan (30%)
- Magenta (47%)
- Yellow (66%)

Brightness & Saturation Gradients

These gradients show how the Decimal color 11700310 changes by changing the brightness by 10 percent. The first figure shows a shift by +10% for each color and the second figure -10%.

Similar to the brightness gradients but the following saturation gradients show a change of the Decimal color 11700310 by changing the saturation by 10% instead.

 11700310

 11700310

16777215

 9858878

 15515017

 8082983

 16767395

 6307600

 16774590

 4663552

 16777178

 2954496

 16777207

 1245184

 0

 11700310

 11700310

 11698244

 11702376

■ 11696178

■ 11704442

■ 11694113

■ 11706507

■ 11691791

■ 11708829

■ 11690240

■ 11710895

■ 11712961

■ 11715027

■ 11717092

■ 11719158

Harmonies

Analogous

The Analogous color harmony consists of three colors that are next to each other on the color wheel.



12942952



11700310



9867860

Triad

The Triadic color harmony groups three colors that are evenly spaced from another and form a triangle on the color wheel.



11700310



1876124



10781628

Complementary

The Complementary color scheme is a pair of colors which are on the opposite of each other on the color wheel.



11700310



5669042

Split Complementary

Split-complementary colors differ from the complementary color scheme. The scheme consists of three colors, the original color and two neighbors of the complement color.



7966410



11700310



40632

Square

The Square scheme is like the rectangle color scheme, but the four colors are evenly spaced on the color wheel.



11700310



5152637



4495561



12614306

Rectangle

The Rectangle color scheme consists of four colors that form a rectangle on the color wheel.



11700310



8427612



4495561



9930690

Sweetspot

The Sweet Spot groups the original color and five complimentary colors.



11700310



15259587



11687553



7695199



16119285



7697781

Same Dimension

The Same Dimension uses a secret algorithm to generate beautiful new colors.



11700310



15246936



11514454



5854544



10048256



1707520

Inverse Universe

The Inverse Universe completely reimagines the original color for something new.



5669042



5806824



5854898



5264473



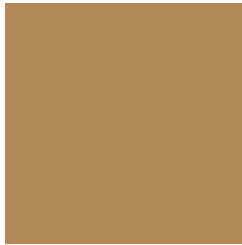
18073



3098

Previews

White Background



This preview shows how the Decimal color 11700310 looks on a white background.

Color Contrast Check

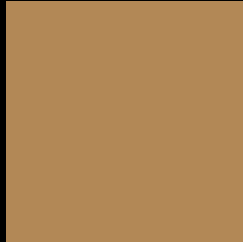
Large Text (above 18pt) WCAG AA ✓ Pass

Any Text WCAG AA × Fail

Large Text (above 18pt) WCAG AAA × Fail

Any Text WCAG AAA × Fail

Black Background



This preview shows how the Decimal color 11700310 looks on a black background.

Color Contrast Check

Large Text (above 18pt) WCAG AA ✓ Pass

Any Text WCAG AA ✓ Pass

Large Text (above 18pt) WCAG AAA ✓ Pass

Any Text WCAG AAA × Fail

If you want to check with other color combinations, try the [Color Contrast Checker](#).

Decimal 11700310 Background



This preview shows how black text looks on a background with the Decimal color 11700310.



This preview shows how white text looks on a background with the Decimal color 11700310.

Color Blindness Simulation

Color vision deficiency is a very complex topic, and I could not describe the different causes any better than Wikipedia does, so if you want to learn more, you should check out their [article about color blindness](#).

Dichromacy



Original Color
11700310

Protanopia
10326105

Deuteranopia
11503958



Tritanopia
12026251

Trichromacy



Original Color
11700310

Protanomaly
10849624

Deuteranomaly
11569494

Tritanomaly
11895928

Monochromacy



Original Color
11700310

Achromatopsia
9408399

Achromatomaly
10259578

CSS Examples

Text

The CSS property to change the color of the text to Decimal 11700310 is called "color". The color property can be set on classes, ids or directly on the HTML element.

This example shows how text in the color #B28856 looks like.

```
.text, #text, p{  
    color:#B28856  
}
```

If you want to add a text shadow in that color use the text-shadow property, you can generate a text shadow directly with our [CSS Text Shadow Generator](#).

Here you see how black text with a 4 pixel #B28856 colored shadow looks like.

```
.shadow{ text-shadow: 4px 4px 2px #B28856
}
```

Border

The CSS property to change the border of an element to Decimal 11700310 is called "border". The border property can be set on classes, ids or directly on the HTML element.

This example shows the color as border, it can be applied via the CSS property "border" or "border-color".

```
.border, #border, table{ border:4px solid
#B28856 }
```

If only the border color should be changed use the property `border-color`.

```
.border{ border-color:#B28856 }
```

If you want to add a box shadow in that color use:

Here you see how a box with a 4 pixel #B28856 colored shadow looks like.

```
.boxshadow{ -moz-box-shadow:4px 4px 4px  
4px #B28856; -webkit-box-shadow:4px 4px  
4px 4px #B28856; box-shadow:4px 4px 4px  
4px #B28856 }
```

Background

The CSS property to change the background color of an element to Decimal 11700310 is called "background". The background property can be set on classes, ids or directly on the HTML element.

```
.background, #background, body{  
background:#B28856 }
```

If only the background color should be changed can be used:

```
.background{ background-color:#B28856 }
```

This example shows the color as background, it is applied via the CSS property "background".

To optimize and compress your CSS code, you can use our [online CSS compressor and optimizer](#) based on csstidy. If you want to create a linear or radial gradient as background or border, check our [CSS Gradient Generator](#).

Hey! You found this booklet interesting? Support Converting Colors with the new Membership Option!

The pro membership hides all ads, plus gives you double the colors in the color bucket, and more awesome pro features!

[Learn more, Memberships starting at \\$2.50/m!](#)

**Follow me
on Twitter!**

@ConvertingColor