

Converting Colors

Decimal(11700616)

Have a look what the booklet for
Decimal(11700616) contains.

Decimal(11700616)	3
<i>Conversions</i>	4
<i>Details</i>	6
<i>Harmonies</i>	11
<i>Previews</i>	23
<i>Color Blindness Simulation</i>	26
<i>CSS Examples</i>	29

Color

Decimal(11700616)

Conversions

Conversions Part 1

Format	Color
Hex	B28988
RGB	178, 137, 136
RGB Percent	70%, 54%, 53%
CMY	0.3020, 0.4627, 0.4667
CMYK	0.00, 0.23, 0.24, 0.30
HSL	1°, 21%, 62%
HSV	1°, 24%, 70%
XYZ	31.7497, 29.1339, 27.2426
YIQ	149.1450, 24.7570, 8.3810

Conversions

Conversions Part 2

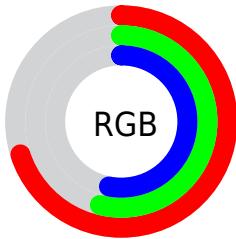
Format	Color
RYB	178, 137, 136
Decimal	11700616
CIELab	60.90, 15.46, 6.56
CIELCh	61, 16.796, 22.989
Yxy	29.1339, 0.3603, 0.3306
Android (android.graphics.Color)	4289890696 (0xFFB28988)
YUV	149.1450, -6.4805, 25.3058
Hunter-Lab	53.9758, 10.5398, 7.8583

Details

The Decimal color **11700616** is a light color, and the websafe version is hex **CC9999**. A complement of this color would be **8958386**, and the grayscale version is **9803157**.

A 20% lighter version of the original color is **15384509**, and **8148822** is the 20% darker color. If you saturate the color by 10%, you get **11696246**, and if you desaturate by 10%, it is **11704986**.

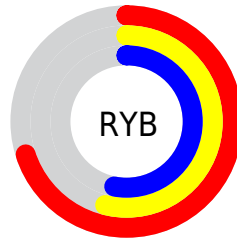
Distribution



Red (70%)

Green (54%)

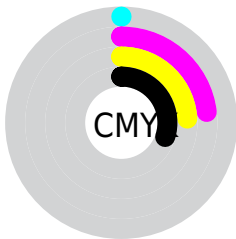
Blue (53%)



Red (70%)

Yellow (54%)

Blue (53%)

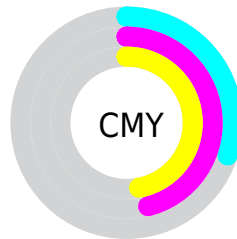


Cyan (0%)

Magenta (23%)

Yellow (24%)

Black (30%)



Cyan (30%)

Magenta (46%)

Yellow (47%)

Brightness & Saturation Gradients

These gradients show how the Decimal color 11700616 changes by changing the brightness by 10 percent. The first figure shows a shift by +10% for each color and the second figure -10%.

Similar to the brightness gradients but the following saturation gradients show a change of the Decimal color 11700616 by changing the saturation by 10% instead.

 11700616

 11700616

16777215

 9924463

 15384509

 8148822

 16767705

 6504255

 16775157

 4860201

 3281941

 2031616

 0

 11700616

 11700616

 11696246

 11704986

 11691620

 11709612

 11687251

 11713981

 11682625

 11718607

 11678255

 11722977

 11673885

 11727347

 11669259

 11730943

 11666432

Harmonies

Analogous

The Analogous color harmony consists of three colors that are next to each other on the color wheel.



11504023



11700616



11373692

Triad

The Triadic color harmony groups three colors that are evenly spaced from another and form a triangle on the color wheel.



11700616



8493441



8295856

Complementary

The Complementary color scheme is a pair of colors which are on the opposite of each other on the color wheel.



11700616



8958386

Split Complementary

Split-complementary colors differ from the complementary color scheme. The scheme consists of three colors, the original color and two neighbors of the complement color.



7313834



11700616



7576463

Square

The Square scheme is like the rectangle color scheme, but the four colors are evenly spaced on the color wheel.



11700616



9606776



7052190



9539758

Rectangle

The Rectangle color scheme consists of four colors that form a rectangle on the color wheel.



11700616



10915703



7052190



7903151

Sweetspot

The Sweet Spot groups the original color and five complimentary colors.



11700616



15259864



11700401



7695468



16119285



7697781

Same Dimension

The Same Dimension uses a secret algorithm to generate beautiful new colors.



11700616



15247783



11705992



5853520



10028032



1704192

Inverse Universe

The Inverse Universe completely reimagines the original color for something new.



8958386



11003880



8953010



5265753



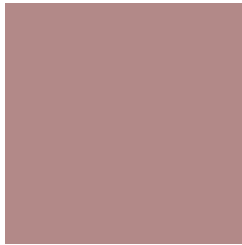
38297



6426

Previews

White Background



This preview shows how the Decimal color 11700616 looks on a white background.

Color Contrast Check

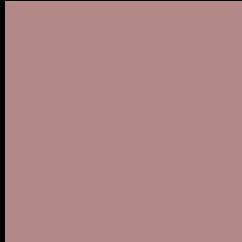
Large Text (above 18pt) WCAG AA ✓ Pass

Any Text WCAG AA ✗ Fail

Large Text (above 18pt) WCAG AAA ✗ Fail

Any Text WCAG AAA ✗ Fail

Black Background



This preview shows how the Decimal color 11700616 looks on a black background.

Color Contrast Check

Large Text (above 18pt) WCAG AA ✓ Pass

Any Text WCAG AA ✓ Pass

Large Text (above 18pt) WCAG AAA ✓ Pass

Any Text WCAG AAA × Fail

If you want to check with other color combinations, try the [Color Contrast Checker](#).

Decimal 11700616 Background



This preview shows how black text looks on a background with the Decimal color 11700616.



This preview shows how white text looks on a background with the Decimal color 11700616.

Color Blindness Simulation

Color vision deficiency is a very complex topic, and I could not describe the different causes any better than Wikipedia does, so if you want to learn more, you should check out their [article about color blindness](#).


Dichromacy



Original Color
11700616

Protanopia
9933709

Deuteranopia
10915463



Tritanopia
11765650

Trichromacy



Original Color
11700616

Protanomaly
10588043

Deuteranomaly
11177095

Tritanomaly
11765902

Monochromacy



Original Color
11700616

Achromatopsia
9803157

Achromatomaly
10523024

CSS Examples

Text

The CSS property to change the color of the text to Decimal 11700616 is called "color". The color property can be set on classes, ids or directly on the HTML element.

This example shows how text in the color #B28988 looks like.

```
.text, #text, p{  
  color:#B28988  
}
```

If you want to add a text shadow in that color use the text-shadow property, you can generate a text shadow directly with our [CSS Text Shadow Generator](#).

Here you see how black text with a 4 pixel #B28988 colored shadow looks like.

```
.shadow{ text-shadow: 4px 4px 2px #B28988
}
```

Border

The CSS property to change the border of an element to Decimal 11700616 is called "border". The border property can be set on classes, ids or directly on the HTML element.

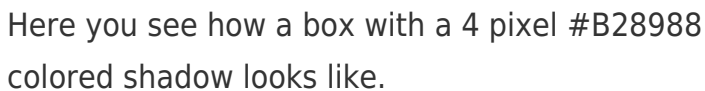
This example shows the color as border, it can be applied via the CSS property "border" or "border-color".

```
.border, #border, table{ border:4px solid
#B28988 }
```

If only the border color should be changed use the property `border-color`.

```
.border{ border-color:#B28988 }
```

If you want to add a box shadow in that color use:



Here you see how a box with a 4 pixel #B28988 colored shadow looks like.

```
.boxshadow{ -moz-box-shadow:4px 4px 4px  
4px #B28988; -webkit-box-shadow:4px 4px  
4px 4px #B28988; box-shadow:4px 4px 4px  
4px #B28988 }
```

Background

The CSS property to change the background color of an element to Decimal 11700616 is called "background". The background property can be set on classes, ids or directly on the HTML element.

```
.background, #background, body{  
background:#B28988 }
```

If only the background color should be changed can be used:

```
.background{ background-color:#B28988 }
```

This example shows the color as background, it is applied via the CSS property "background".

To optimize and compress your CSS code, you can use our [online CSS compressor and optimizer](#) based on csstidy. If you want to create a linear or radial gradient as background or border, check our [CSS Gradient Generator](#).

Hey! You found this booklet interesting? Support Converting Colors with the new Membership Option!

The pro membership hides all ads, plus gives you double the colors in the color bucket, and more awesome pro features!

[Learn more, Memberships starting at \\$2.50/m!](#)

**Follow me
on Twitter!**

@ConvertingColor