

# Converting Colors

Decimal(11700869)

Have a look what the booklet for  
Decimal(11700869) contains.

<b>Decimal(11700869)</b> .....	3
<i><b>Conversions</b></i> .....	4
<i><b>Details</b></i> .....	6
<i><b>Harmonies</b></i> .....	11
<i><b>Previews</b></i> .....	23
<i><b>Color Blindness Simulation</b></i> .....	26
<i><b>CSS Examples</b></i> .....	29

# **Color**

**Decimal(11700869)**

# Conversions

## Conversions Part 1

Format	Color
Hex	B28A85
RGB	178, 138, 133
RGB Percent	70%, 54%, 52%
CMY	0.3020, 0.4588, 0.4784
CMYK	0.00, 0.22, 0.25, 0.30
HSL	7°, 23%, 61%
HSV	7°, 25%, 70%
XYZ	31.6822, 29.3354, 26.1828
YIQ	149.3900, 25.4450, 6.9250

# Conversions

## Conversions Part 2

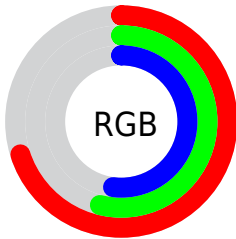
<b>Format</b>	<b>Color</b>
<b>RYB</b>	178, 139, 133
Decimal	11700869
CIELab	61.08, 14.45, 8.52
CIELCh	61, 16.778, 30.520
Yxy	29.3354, 0.3633, 0.3364
Android (android.graphics.Color)	4289890949 (0xFFB28A85)
YUV	149.3900, -8.0803, 25.0910
Hunter-Lab	54.1622, 9.6300, 9.2519

# Details

The Decimal color **11700869** is a light color, and the websafe version is hex **CC9999**. A complement of this color would be **8760754**, and the grayscale version is **9803157**.

A 20% lighter version of the original color is **15384762**, and **8149076** is the 20% darker color. If you saturate the color by 10%, you get **11696755**, and if you desaturate by 10%, it is **11704983**.

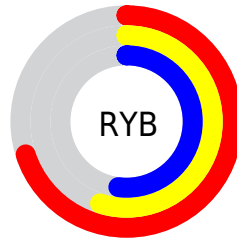
# Distribution



Red (70%)

Green (54%)

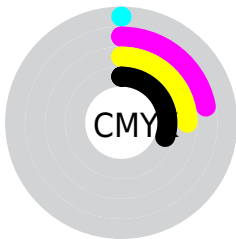
Blue (52%)



Red (70%)

Yellow (55%)

Blue (52%)

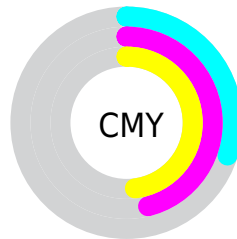


Cyan (0%)

Magenta (22%)

Yellow (25%)

Black (30%)



Cyan (30%)

Magenta (46%)

Yellow (48%)

# Brightness & Saturation Gradients

These gradients show how the Decimal color 11700869 changes by changing the brightness by 10 percent. The first figure shows a shift by +10% for each color and the second figure -10%.

Similar to the brightness gradients but the following saturation gradients show a change of the Decimal color 11700869 by changing the saturation by 10% instead.



 11700869

 11700869

16777215

 9924716

 15384762

 8149076

 16767958

 6504508

 16775410


 4860455

 3282194

 1966080

 0

 11700869

 11700869

 11696755

 11704983

 11692641

 11709097

 11688784

 11712954

 11684670

 11717068

 11680556

 11721182

 11676442

 11725296

 11672328

 11729407

 11670528

 11730943

# Harmonies

## Analogous

The Analogous color harmony consists of three colors that are next to each other on the color wheel.



11635092



11700869



11243130

# Triad

The Triadic color harmony groups three colors that are evenly spaced from another and form a triangle on the color wheel.



11700869



8297092



8623537

# Complementary

The Complementary color scheme is a pair of colors which are on the opposite of each other on the color wheel.



11700869



8760754

# Split Complementary

Split-complementary colors differ from the complementary color scheme. The scheme consists of three colors, the original color and two neighbors of the complement color.



7510445



11700869



7380115

# Square

The Square scheme is like the rectangle color scheme, but the four colors are evenly spaced on the color wheel.



11700869



9344890



7052194



9867437

# Rectangle

The Rectangle color scheme consists of four colors that form a rectangle on the color wheel.



11700869



10719606



7052194



8230576



# Sweetspot

The Sweet Spot groups the original color and five complimentary colors.



11700869



15259861



11699630



7695210



16119285



7697781



# Same Dimension

The Same Dimension uses a secret algorithm to generate beautiful new colors.



11700869



15248034



11706501



5853520



10031360



1704704



# Inverse Universe

The Inverse Universe completely reimagines the original color for something new.



8760754



10674408



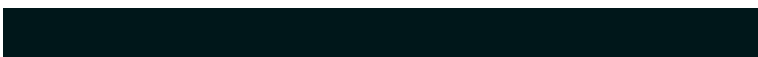
8755122



5265497



34969

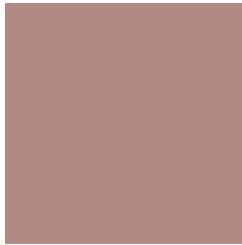


5914



# Previews

## White Background



This preview shows how the Decimal color 11700869 looks on a white background.

## Color Contrast Check

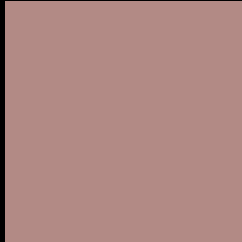
Large Text (above 18pt) WCAG AA ✓ Pass

Any Text WCAG AA × Fail

Large Text (above 18pt) WCAG AAA × Fail

Any Text WCAG AAA × Fail

# Black Background



This preview shows how the Decimal color 11700869 looks on a black background.

## Color Contrast Check

Large Text (above 18pt) WCAG AA ✓ Pass

Any Text WCAG AA ✓ Pass

Large Text (above 18pt) WCAG AAA ✓ Pass

Any Text WCAG AAA × Fail

If you want to check with other color combinations, try the [Color Contrast Checker](#).



## Decimal 11700869 Background



This preview shows how black text looks on a background with the Decimal color 11700869.




This preview shows how white text looks on a background with the Decimal color 11700869.

# Color Blindness Simulation

Color vision deficiency is a very complex topic, and I could not describe the different causes any better than Wikipedia does, so if you want to learn more, you should check out their [article about color blindness](#).

## Dichromacy





**Tritanopia**  
11831442

# Trichromacy



**Original Color**  
11700869

**Protanomaly**  
10653832

**Deuteranomaly**  
11308420

**Tritanomaly**  
11766157

# Monochromacy



**Original Color**  
11700869

**Achromatopsia**  
9803157

**Achromatomaly**  
10523023

# CSS Examples

## Text

The CSS property to change the color of the text to Decimal 11700869 is called "color". The color property can be set on classes, ids or directly on the HTML element.

This example shows how text in the color #B28A85 looks like.

```
.text, #text, p{  
  color:#B28A85  
}
```

If you want to add a text shadow in that color use the text-shadow property, you can generate a text shadow directly with our [CSS Text Shadow Generator](#).

Here you see how black text with a 4 pixel #B28A85 colored shadow looks like.

```
.shadow{ text-shadow: 4px 4px 2px #B28A85  
}
```

## Border

The CSS property to change the border of an element to Decimal 11700869 is called "border". The border property can be set on classes, ids or directly on the HTML element.

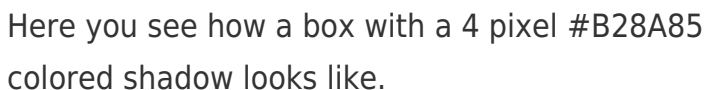
This example shows the color as border, it can be applied via the CSS property "border" or "border-color".

```
.border, #border, table{ border:4px solid  
#B28A85 }
```

If only the border color should be changed use the property `border-color`.

```
.border{ border-color:#B28A85 }
```

If you want to add a box shadow in that color use:



Here you see how a box with a 4 pixel #B28A85 colored shadow looks like.

```
.boxshadow{ -moz-box-shadow:4px 4px 4px  
4px #B28A85; -webkit-box-shadow:4px 4px  
4px 4px #B28A85; box-shadow:4px 4px 4px  
4px #B28A85 }
```

# Background

The CSS property to change the background color of an element to Decimal 11700869 is called "background". The background property can be set on classes, ids or directly on the HTML element.

```
.background, #background, body{  
background:#B28A85 }
```

If only the background color should be changed can be used:

```
.background{ background-color:#B28A85 }
```

This example shows the color as background, it is applied via the CSS property "background".

To optimize and compress your CSS code, you can use our [online CSS compressor and optimizer](#) based on csstidy. If you want to create a linear or radial gradient as background or border, check our [CSS Gradient Generator](#).



Hey! You found this booklet interesting? Support Converting Colors with the new Membership Option!

The pro membership hides all ads, plus gives you double the colors in the color bucket, and more awesome pro features!

**[Learn more, Memberships starting at \\$2.50/m!](#)**

**Follow me  
on Twitter!**

@ConvertingColor