

Converting Colors

Decimal(11701110)

Have a look what the booklet for
Decimal(11701110) contains.

Decimal(11701110)	3
<i>Conversions</i>	4
<i>Details</i>	6
<i>Harmonies</i>	11
<i>Previews</i>	23
<i>Color Blindness Simulation</i>	26
<i>CSS Examples</i>	29

Color

Decimal(11701110)

Conversions

Conversions Part 1

Format	Color
Hex	B28B76
RGB	178, 139, 118
RGB Percent	70%, 55%, 46%
CMY	0.3020, 0.4549, 0.5373
CMYK	0.00, 0.22, 0.34, 0.30
HSL	21°, 28%, 58%
HSV	21°, 34%, 70%
XYZ	30.8627, 29.2382, 21.1564
YIQ	148.2670, 29.9850, 1.7370

Conversions

Conversions Part 2

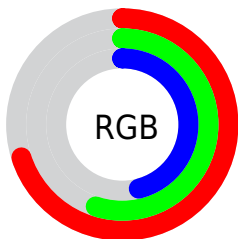
Format	Color
R_{YB}	178, 150, 118
Decimal	11701110
CIE _{Lab}	60.99, 11.81, 16.90
CIE _{LCh}	61, 20.619, 55.069
Yxy	29.2382, 0.3798, 0.3598
Android (android.graphics.Color)	4289891190 (0xFFB28B76)
YUV	148.2670, -14.9216, 26.0758
Hunter-Lab	54.0724, 7.2553, 14.6528

Details

The Decimal color **11701110** is a dark color, and the websafe version is hex **CC9999**. A complement of this color would be **7773618**, and the grayscale version is **9737364**.

A 20% lighter version of the original color is **15450538**, and **8149318** is the 20% darker color. If you saturate the color by 10%, you get **11698020**, and if you desaturate by 10%, it is **11704200**.

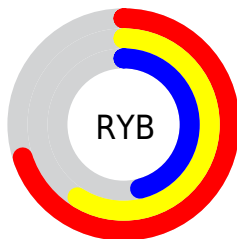
Distribution



Red (70%)

Green (55%)

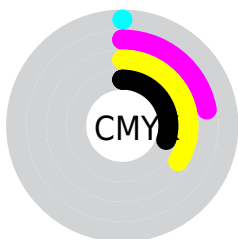
Blue (46%)



Red (70%)

Yellow (59%)

Blue (46%)

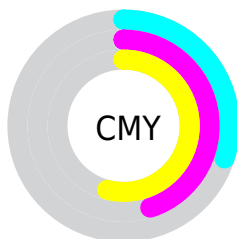


Cyan (0%)

Magenta (22%)

Yellow (34%)

Black (30%)



Cyan (30%)

Magenta (45%)

Yellow (54%)

Brightness & Saturation Gradients

These gradients show how the Decimal color 11701110 changes by changing the brightness by 10 percent. The first figure shows a shift by +10% for each color and the second figure -10%.

Similar to the brightness gradients but the following saturation gradients show a change of the Decimal color 11701110 by changing the saturation by 10% instead.

 11701110

 11701110

16777215

 9924957

 15450538

 8149318

 16768198

 6439215

 16775650

 4795162

16777214

 3282432

 1769472

 0

 11701110

 11701110

 11698020

 11704200

■ 11695186

■ 11707034

■ 11692097

■ 11710123

■ 11689263

■ 11712957

■ 11686173

■ 11716047

■ 11683339

■ 11718881

■ 11681280

■ 11721971

■ 11725055

■ 11727871

Harmonies

Analogous

The Analogous color harmony consists of three colors that are next to each other on the color wheel.



12158853



11701110



10785135

Triad

The Triadic color harmony groups three colors that are evenly spaced from another and form a triangle on the color wheel.



11701110



6921615



9605300

Complementary

The Complementary color scheme is a pair of colors which are on the opposite of each other on the color wheel.



11701110



7773618

Split Complementary

Split-complementary colors differ from the complementary color scheme. The scheme consists of three colors, the original color and two neighbors of the complement color.



7968439



11701110



6266274

Square

The Square scheme is like the rectangle color scheme, but the four colors are evenly spaced on the color wheel.



11701110



8166270



6658992



11045544

Rectangle

The Rectangle color scheme consists of four colors that form a rectangle on the color wheel.



11701110



9934192



6658992



9081526

Sweetspot

The Sweet Spot groups the original color and five complimentary colors.



11701110



15260113



11695773



7695463



16119285



7697781

Same Dimension

The Same Dimension uses a secret algorithm to generate beautiful new colors.



11701110



15248523



11708534



5854032



10040832



1706240

Inverse Universe

The Inverse Universe completely reimagines the original color for something new.



7773618



9160936



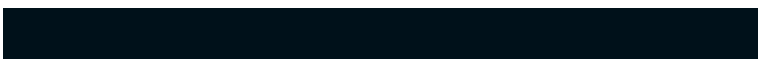
7765938



5264985



25497



4378

Previews

White Background



This preview shows how the Decimal color 11701110 looks on a white background.

Color Contrast Check

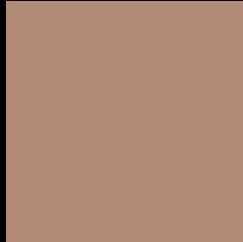
Large Text (above 18pt) WCAG AA ✓ Pass

Any Text WCAG AA × Fail

Large Text (above 18pt) WCAG AAA × Fail

Any Text WCAG AAA × Fail

Black Background



This preview shows how the Decimal color 11701110 looks on a black background.

Color Contrast Check

Large Text (above 18pt) WCAG AA ✓ Pass

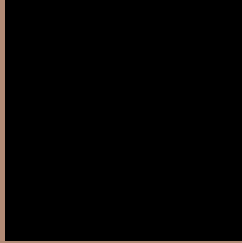
Any Text WCAG AA ✓ Pass

Large Text (above 18pt) WCAG AAA ✓ Pass

Any Text WCAG AAA × Fail

If you want to check with other color combinations, try the [Color Contrast Checker](#).

Decimal 11701110 Background



This preview shows how black text looks on a background with the Decimal color 11701110.



This preview shows how white text looks on a background with the Decimal color 11701110.

Color Blindness Simulation

Color vision deficiency is a very complex topic, and I could not describe the different causes any better than Wikipedia does, so if you want to learn more, you should check out their [article about color blindness](#).

Dichromacy





Tritanopia
11896722

Trichromacy



Original Color
11701110

Protanomaly
10784889

Deuteranomaly
11439478

Tritanomaly
11831432

Monochromacy



Original Color
11701110

Achromatopsia
9737364

Achromatomaly
10457481

CSS Examples

Text

The CSS property to change the color of the text to Decimal 11701110 is called "color". The color property can be set on classes, ids or directly on the HTML element.

This example shows how text in the color #B28B76 looks like.

```
.text, #text, p{  
    color:#B28B76  
}
```

If you want to add a text shadow in that color use the text-shadow property, you can generate a text shadow directly with our [CSS Text Shadow Generator](#).

Here you see how black text with a 4 pixel #B28B76 colored shadow looks like.

```
.shadow{ text-shadow: 4px 4px 2px #B28B76  
}
```

Border

The CSS property to change the border of an element to Decimal 11701110 is called "border". The border property can be set on classes, ids or directly on the HTML element.

This example shows the color as border, it can be applied via the CSS property "border" or "border-color".

```
.border, #border, table{ border:4px solid  
#B28B76 }
```

If only the border color should be changed use the property `border-color`.

```
.border{ border-color:#B28B76 }
```

If you want to add a box shadow in that color use:

Here you see how a box with a 4 pixel #B28B76 colored shadow looks like.

```
.boxshadow{ -moz-box-shadow:4px 4px 4px  
4px #B28B76; -webkit-box-shadow:4px 4px  
4px 4px #B28B76; box-shadow:4px 4px 4px  
4px #B28B76 }
```

Background

The CSS property to change the background color of an element to Decimal 11701110 is called "background". The background property can be set on classes, ids or directly on the HTML element.

```
.background, #background, body{  
background:#B28B76 }
```

If only the background color should be changed can be used:

```
.background{ background-color:#B28B76 }
```

This example shows the color as background, it is applied via the CSS property "background".

To optimize and compress your CSS code, you can use our [online CSS compressor and optimizer](#) based on csstidy. If you want to create a linear or radial gradient as background or border, check our [CSS Gradient Generator](#).

Hey! You found this booklet interesting? Support Converting Colors with the new Membership Option!

The pro membership hides all ads, plus gives you double the colors in the color bucket, and more awesome pro features!

[Learn more, Memberships starting at \\$2.50/m!](#)

**Follow me
on Twitter!**

@ConvertingColor