

Converting Colors

Decimal(11701335)

Have a look what the booklet for
Decimal(11701335) contains.

| | |
|--|----|
| Decimal(11701335) | 3 |
| <i>Conversions</i> | 4 |
| <i>Details</i> | 6 |
| <i>Harmonies</i> | 11 |
| <i>Previews</i> | 23 |
| <i>Color Blindness Simulation</i> | 26 |
| <i>CSS Examples</i> | 29 |

Color

Decimal(11701335)

Conversions

Conversions Part 1

| Format | Color |
|---------------|----------------------------|
| Hex | B28C57 |
| RGB | 178, 140, 87 |
| RGB Percent | 70%, 55%, 34% |
| CMY | 0.3020, 0.4510, 0.6588 |
| CMYK | 0.00, 0.21, 0.51, 0.30 |
| HSL | 35°, 37%, 52% |
| HSV | 35°, 51%, 70% |
| XYZ | 29.4585, 28.9093, 13.0442 |
| YIQ | 145.3200, 39.6610, -8.4270 |

Conversions

Conversions Part 2

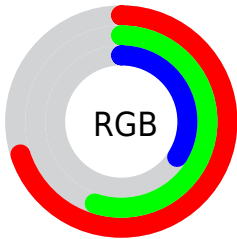
| Format | Color |
|-------------------------------------|--------------------------------|
| RYB | 152, 178, 87 |
| Decimal | 11701335 |
| CIELab | 60.70, 7.76, 33.65 |
| CIElCh | 61, 34.534, 77.011 |
| Yxy | 28.9093, 0.4125, 0.4048 |
| Android (android.graphics.Color) | 4289891415 (0xFFB28C57) |
| YUV | 145.3200, -28.7518, 28.6604 |
| Hunter-Lab | 53.7673, 3.7052, 23.2531 |

Details

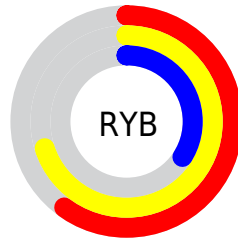
The Decimal color **11701335** is a dark color, and the websafe version is hex **CC9966**. A complement of this color would be **5733810**, and the grayscale version is **9605778**.

A 20% lighter version of the original color is **15516042**, and **8084008** is the 20% darker color. If you saturate the color by 10%, you get **11699525**, and if you desaturate by 10%, it is **11703145**.

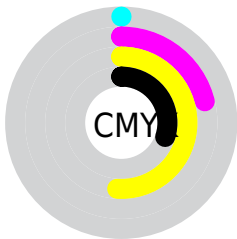
Distribution



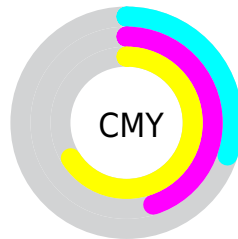
- Red (70%)
- Green (55%)
- Blue (34%)



- Red (60%)
- Yellow (70%)
- Blue (34%)



- Cyan (0%)
- Magenta (21%)
- Yellow (51%)
- Black (30%)



- Cyan (30%)
- Magenta (45%)
- Yellow (66%)

Brightness & Saturation Gradients

These gradients show how the Decimal color 11701335 changes by changing the brightness by 10 percent. The first figure shows a shift by +10% for each color and the second figure -10%.

Similar to the brightness gradients but the following saturation gradients show a change of the Decimal color 11701335 by changing the saturation by 10% instead.

 11701335

 11701335

16777215

 9859903

 15516042

 8084008

 16768420

 6308624

 16775872

 4664576

 16777180

 3020800

 16777208

 1376256

 0

 11701335

 11701335

 11699525

 11703145

■ 11697459

■ 11705211

■ 11695650

■ 11707020

■ 11693584

■ 11709086

■ 11692032

■ 11710896

■ 11712962

■ 11714772

■ 11716581

■ 11718647

Harmonies

Analogous

The Analogous color harmony consists of three colors that are next to each other on the color wheel.



13009511



11701335



9803351

Triad

The Triadic color harmony groups three colors that are evenly spaced from another and form a triangle on the color wheel.



11701335



1614755



11240636

Complementary

The Complementary color scheme is a pair of colors which are on the opposite of each other on the color wheel.



11701335



5733810

Split Complementary

Split-complementary colors differ from the complementary color scheme. The scheme consists of three colors, the original color and two neighbors of the complement color.



8556493



11701335



893118

Square

The Square scheme is like the rectangle color scheme, but the four colors are evenly spaced on the color wheel.



11701335



4956804



5085645



12942497

Rectangle

The Rectangle color scheme consists of four colors that form a rectangle on the color wheel.



11701335



8362849



5085645



10455235

Sweetspot

The Sweet Spot groups the original color and five complimentary colors.



11701335



15260357



11687806



7695456



16119285



7697781

Same Dimension

The Same Dimension uses a secret algorithm to generate beautiful new colors.



11701335



15248730



11317847



5854800



10049792



1707776

Inverse Universe

The Inverse Universe completely reimagines the original color for something new.



5733810



5936872



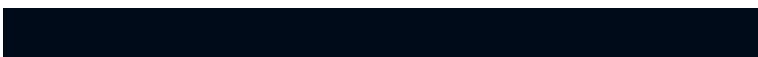
6117298



5264473



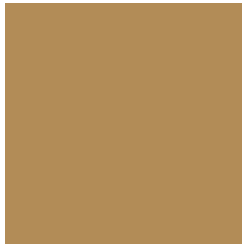
16537



2842

Previews

White Background



This preview shows how the Decimal color 11701335 looks on a white background.

Color Contrast Check

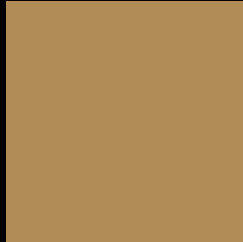
Large Text (above 18pt) WCAG AA ✓ Pass

Any Text WCAG AA × Fail

Large Text (above 18pt) WCAG AAA × Fail

Any Text WCAG AAA × Fail

Black Background



This preview shows how the Decimal color 11701335 looks on a black background.

Color Contrast Check

Large Text (above 18pt) WCAG AA ✓ Pass

Any Text WCAG AA ✓ Pass

Large Text (above 18pt) WCAG AAA ✓ Pass

Any Text WCAG AAA × Fail

If you want to check with other color combinations, try the [Color Contrast Checker](#).

Decimal 11701335 Background



This preview shows how black text looks on a background with the Decimal color 11701335.



This preview shows how white text looks on a background with the Decimal color 11701335.

Color Blindness Simulation

Color vision deficiency is a very complex topic, and I could not describe the different causes any better than Wikipedia does, so if you want to learn more, you should check out their [article about color blindness](#).

Dichromacy



Original Color
11701335

Protanopia
10523481

Deuteranopia
11701335



Tritanopia
12027279

Trichromacy



Original Color
11701335

Protanomaly
10981464

Deuteranomaly
11701335

Tritanomaly
11896955

Monochromacy



Original Color
11701335

Achromatopsia
9539985

Achromatomaly
10325884

CSS Examples

Text

The CSS property to change the color of the text to Decimal 11701335 is called "color". The color property can be set on classes, ids or directly on the HTML element.

This example shows how text in the color #B28C57 looks like.

```
.text, #text, p{  
    color:#B28C57  
}
```

If you want to add a text shadow in that color use the text-shadow property, you can generate a text shadow directly with our [CSS Text Shadow Generator](#).

Here you see how black text with a 4 pixel #B28C57 colored shadow looks like.

```
.shadow{ text-shadow: 4px 4px 2px #B28C57
}
```

Border

The CSS property to change the border of an element to Decimal 11701335 is called "border". The border property can be set on classes, ids or directly on the HTML element.

This example shows the color as border, it can be applied via the CSS property "border" or "border-color".

```
.border, #border, table{ border:4px solid
#B28C57 }
```

If only the border color should be changed use the property `border-color`.

```
.border{ border-color:#B28C57 }
```

If you want to add a box shadow in that color use:

Here you see how a box with a 4 pixel #B28C57 colored shadow looks like.

```
.boxshadow{ -moz-box-shadow:4px 4px 4px  
4px #B28C57; -webkit-box-shadow:4px 4px  
4px 4px #B28C57; box-shadow:4px 4px 4px  
4px #B28C57 }
```

Background

The CSS property to change the background color of an element to Decimal 11701335 is called "background". The background property can be set on classes, ids or directly on the HTML element.

```
.background, #background, body{  
background:#B28C57 }
```

If only the background color should be changed can be used:

```
.background{ background-color:#B28C57 }
```

This example shows the color as background, it is applied via the CSS property "background".

To optimize and compress your CSS code, you can use our [online CSS compressor and optimizer](#) based on csstidy. If you want to create a linear or radial gradient as background or border, check our [CSS Gradient Generator](#).

Hey! You found this booklet interesting? Support Converting Colors with the new Membership Option!

The pro membership hides all ads, plus gives you double the colors in the color bucket, and more awesome pro features!

[Learn more, Memberships starting at \\$2.50/m!](#)

**Follow me
on Twitter!**

@ConvertingColor