

# Converting Colors

Decimal(11701379)

Have a look what the booklet for  
Decimal(11701379) contains.

<b>Decimal(11701379)</b> .....	3
<i><b>Conversions</b></i> .....	4
<i><b>Details</b></i> .....	6
<i><b>Harmonies</b></i> .....	11
<i><b>Previews</b></i> .....	23
<i><b>Color Blindness Simulation</b></i> .....	26
<i><b>CSS Examples</b></i> .....	29

# **Color**

**Decimal(11701379)**

# Conversions

## Conversions Part 1

<b>Format</b>	<b>Color</b>
Hex	B28C83
RGB	178, 140, 131
RGB Percent	70%, 55%, 51%
CMY	0.3020, 0.4510, 0.4863
CMYK	0.00, 0.21, 0.26, 0.30
HSL	11°, 23%, 61%
HSV	11°, 26%, 70%
XYZ	31.8349, 29.8598, 25.5584
YIQ	150.3360, 25.5370, 5.2570

# Conversions

## Conversions Part 2

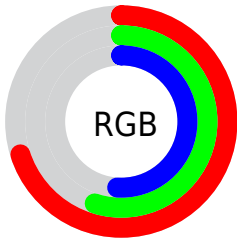
Format	Color
<a href="#">RYB</a>	<a href="#">178, 142, 131</a>
Decimal	<a href="#">11701379</a>
CIELab	<a href="#">61.53, 13.04, 10.30</a>
CIELCh	<a href="#">62, 16.621, 38.313</a>
Yxy	<a href="#">29.8598, 0.3649, 0.3422</a>
Android (android.graphics.Color)	<a href="#">4289891459 (0xFFB28C83)</a>
YUV	<a href="#">150.3360, -9.5326, 24.2613</a>
Hunter-Lab	<a href="#">54.6442, 8.3643, 10.5196</a>

# Details

The Decimal color **11701379** is a light color, and the websafe version is hex **CC9999**. A complement of this color would be **8628658**, and the grayscale version is **9868950**.

A 20% lighter version of the original color is **15385272**, and **8149586** is the 20% darker color. If you saturate the color by 10%, you get **11697777**, and if you desaturate by 10%, it is **11704981**.

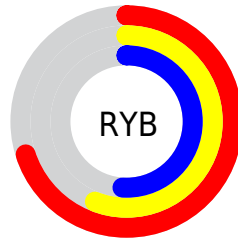
# Distribution



Red (70%)

Green (55%)

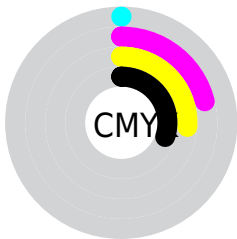
Blue (51%)



Red (70%)

Yellow (56%)

Blue (51%)

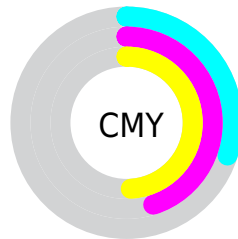


Cyan (0%)

Magenta (21%)

Yellow (26%)

Black (30%)



Cyan (30%)

Magenta (45%)

Yellow (49%)

# Brightness & Saturation Gradients

These gradients show how the Decimal color 11701379 changes by changing the brightness by 10 percent. The first figure shows a shift by +10% for each color and the second figure -10%.

Similar to the brightness gradients but the following saturation gradients show a change of the Decimal color 11701379 by changing the saturation by 10% instead.



 11701379

 11701379

16777215

 9925226

 15385272

 8149586

 16768724

 6505019

 16775920

 4860965

 3282704

 1966080

 0

 11701379

 11701379

 11697777

 11704981

 11693919

 11708839

 11690318

 11712440

 11686460

 11716298

 11682858

 11719900

 11679256

 11723502

 11675398

 11727359

 11674112

 11730943

# Harmonies

## Analogous

The Analogous color harmony consists of three colors that are next to each other on the color wheel.



11766417



11701379



11178106

# Triad

The Triadic color harmony groups three colors that are evenly spaced from another and form a triangle on the color wheel.



11701379



8101001



9016497

# Complementary

The Complementary color scheme is a pair of colors which are on the opposite of each other on the color wheel.



11701379



8628658

# Split Complementary

Split-complementary colors differ from the complementary color scheme. The scheme consists of three colors, the original color and two neighbors of the complement color.



7838127



11701379



7314840

# Square

The Square scheme is like the rectangle color scheme, but the four colors are evenly spaced on the color wheel.



11701379



9148797



7249062



10260396

# Rectangle

The Rectangle color scheme consists of four colors that form a rectangle on the color wheel.



11701379



10589047



7249062



8623794



# Sweetspot

The Sweet Spot groups the original color and five complimentary colors.



11701379



15260117



11699113



7695466



16119285



7697781



# Same Dimension

The Same Dimension uses a secret algorithm to generate beautiful new colors.



11701379



15248542



11707267



5853776



10034432



1705216



# Inverse Universe

The Inverse Universe completely reimagines the original color for something new.



8628658



10410728



8622770



5265497



31897



5402



# Previews

## White Background



This preview shows how the Decimal color 11701379 looks on a white background.

## Color Contrast Check

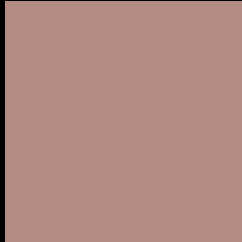
Large Text (above 18pt) WCAG AA ✓ Pass

Any Text WCAG AA × Fail

Large Text (above 18pt) WCAG AAA × Fail

Any Text WCAG AAA × Fail

# Black Background



This preview shows how the Decimal color 11701379 looks on a black background.

## Color Contrast Check

Large Text (above 18pt) WCAG AA ✓ Pass

Any Text WCAG AA ✓ Pass

Large Text (above 18pt) WCAG AAA ✓ Pass

Any Text WCAG AAA × Fail

If you want to check with other color combinations, try the [Color Contrast Checker](#).



## Decimal 11701379 Background



This preview shows how black text looks on a background with the Decimal color 11701379.



This preview shows how white text looks on a background with the Decimal color 11701379.

# Color Blindness Simulation

Color vision deficiency is a very complex topic, and I could not describe the different causes any better than Wikipedia does, so if you want to learn more, you should check out their [article about color blindness](#).


## Dichromacy



**Original Color**  
11701379

**Protanopia**  
10196103

**Deuteranopia**  
11177858



**Tritanopia**  
11831700

# Trichromacy



**Original Color**  
11701379

**Protanomaly**  
10719622

**Deuteranomaly**  
11374210

**Tritanomaly**  
11766414

# Monochromacy



**Original Color**  
11701379

**Achromatopsia**  
9868950

**Achromatomaly**  
10523279

# CSS Examples

## Text

The CSS property to change the color of the text to Decimal 11701379 is called "color". The color property can be set on classes, ids or directly on the HTML element.

This example shows how text in the color #B28C83 looks like.

```
.text, #text, p{  
  color:#B28C83  
}
```

If you want to add a text shadow in that color use the text-shadow property, you can generate a text shadow directly with our [CSS Text Shadow Generator](#).

Here you see how black text with a 4 pixel #B28C83 colored shadow looks like.

```
.shadow{ text-shadow: 4px 4px 2px #B28C83
}
```

## Border

The CSS property to change the border of an element to Decimal 11701379 is called "border". The border property can be set on classes, ids or directly on the HTML element.

This example shows the color as border, it can be applied via the CSS property "border" or "border-color".

```
.border, #border, table{ border:4px solid
#B28C83 }
```

If only the border color should be changed use the property `border-color`.

```
.border{ border-color:#B28C83 }
```

If you want to add a box shadow in that color use:

Here you see how a box with a 4 pixel #B28C83 colored shadow looks like.

```
.boxshadow{ -moz-box-shadow:4px 4px 4px  
4px #B28C83; -webkit-box-shadow:4px 4px  
4px 4px #B28C83; box-shadow:4px 4px 4px  
4px #B28C83 }
```

# Background

The CSS property to change the background color of an element to Decimal 11701379 is called "background". The background property can be set on classes, ids or directly on the HTML element.

```
.background, #background, body{  
background:#B28C83 }
```

If only the background color should be changed can be used:

```
.background{ background-color:#B28C83 }
```

This example shows the color as background, it is applied via the CSS property "background".

To optimize and compress your CSS code, you can use our [online CSS compressor and optimizer](#) based on csstidy. If you want to create a linear or radial gradient as background or border, check our [CSS Gradient Generator](#).



Hey! You found this booklet interesting? Support Converting Colors with the new Membership Option!

The pro membership hides all ads, plus gives you double the colors in the color bucket, and more awesome pro features!

**[Learn more, Memberships starting at \\$2.50/m!](#)**

**Follow me  
on Twitter!**

@ConvertingColor