

Converting Colors

Decimal(11705478)

Have a look what the booklet for
Decimal(11705478) contains.

Decimal(11705478)	3
<i>Conversions</i>	4
<i>Details</i>	6
<i>Harmonies</i>	11
<i>Previews</i>	23
<i>Color Blindness Simulation</i>	26
<i>CSS Examples</i>	29

Color

Decimal(11705478)

Conversions

Conversions Part 1

Format	Color
Hex	B29C86
RGB	178, 156, 134
RGB Percent	70%, 61%, 53%
CMY	0.3020, 0.3882, 0.4745
CMYK	0.00, 0.12, 0.25, 0.30
HSL	30°, 22%, 61%
HSV	30°, 25%, 70%
XYZ	34.5516, 34.9631, 27.4818
YIQ	160.0700, 20.1740, -2.1780

Conversions

Conversions Part 2

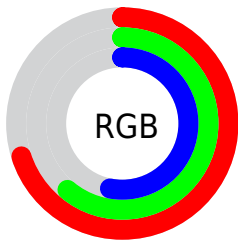
Format	Color
RYB	178, 178, 134
Decimal	11705478
CIELab	65.72, 4.60, 14.50
CIElCh	66, 15.216, 72.387
Yxy	34.9631, 0.3562, 0.3605
Android (android.graphics.Color)	4289895558 (0xFFB29C86)
YUV	160.0700, -12.8525, 15.7246
Hunter-Lab	59.1296, 0.8273, 13.8345

Details

The Decimal color **11705478** is a light color, and the websafe version is hex **999999**. A complement of this color would be **8821938**, and the grayscale version is **10526880**.

A 20% lighter version of the original color is **15389371**, and **8218964** is the 20% darker color. If you saturate the color by 10%, you get **11703156**, and if you desaturate by 10%, it is **11707800**.

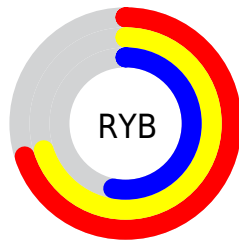
Distribution



Red (70%)

Green (61%)

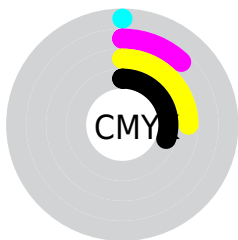
Blue (53%)



Red (70%)

Yellow (70%)

Blue (53%)

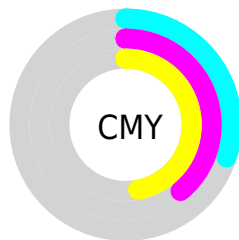


Cyan (0%)

Magenta (12%)

Yellow (25%)

Black (30%)



Cyan (30%)

Magenta (39%)

Yellow (47%)

Brightness & Saturation Gradients

These gradients show how the Decimal color 11705478 changes by changing the brightness by 10 percent. The first figure shows a shift by +10% for each color and the second figure -10%.

Similar to the brightness gradients but the following saturation gradients show a change of the Decimal color 11705478 by changing the saturation by 10% instead.

 11705478

 11705478

16777215

 9929325

 15389371

 8218964

 16773079

 6508861

 16777203

 4930087

 3417107


 2035456

 0

 11705478

 11705478

 11703156

 11707800

■ 11700834

■ 11710122

■ 11698513

■ 11712443

■ 11696191

■ 11714765

■ 11694125

■ 11716831

■ 11691803

■ 11719153

■ 11689481

■ 11721471

■ 11688192

■ 11723775

■ 11726079

Harmonies

Analogous

The Analogous color harmony consists of three colors that are next to each other on the color wheel.



12294286



11705478



10854789

Triad

The Triadic color harmony groups three colors that are evenly spaced from another and form a triangle on the color wheel.



11705478



8235173



11115188

Complementary

The Complementary color scheme is a pair of colors which are on the opposite of each other on the color wheel.



11705478



8821938

Split Complementary

Split-complementary colors differ from the complementary color scheme. The scheme consists of three colors, the original color and two neighbors of the complement color.



10002362



11705478



8234673

Square

The Square scheme is like the rectangle color scheme, but the four colors are evenly spaced on the color wheel.



11705478



8824727



8889273



11966376

Rectangle

The Rectangle color scheme consists of four colors that form a rectangle on the color wheel.



11705478



10134408



8889273



10788023

Sweetspot

The Sweet Spot groups the original color and five complimentary colors.



11705478



15261912



11699868



7696748



16119285



7697781

Same Dimension

The Same Dimension uses a secret algorithm to generate beautiful new colors.



11705478



15254946



11711110



5854544



10046720



1707264

Inverse Universe

The Inverse Universe completely reimagines the original color for something new.



8821938



10667496



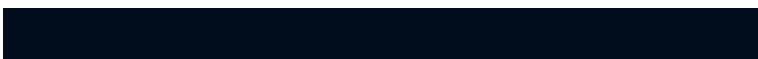
8816306



5264729



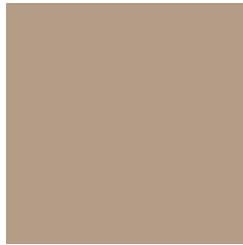
19865



3354

Previews

White Background



This preview shows how the Decimal color 11705478 looks on a white background.

Color Contrast Check

Large Text (above 18pt) WCAG AA × Fail

Any Text WCAG AA × Fail

Large Text (above 18pt) WCAG AAA × Fail

Any Text WCAG AAA × Fail

Black Background



This preview shows how the Decimal color 11705478 looks on a black background.

Color Contrast Check

Large Text (above 18pt) WCAG AA ✓ Pass

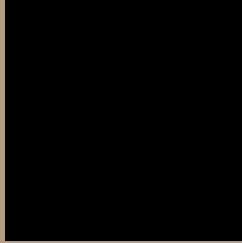
Any Text WCAG AA ✓ Pass

Large Text (above 18pt) WCAG AAA ✓ Pass

Any Text WCAG AAA ✓ Pass

If you want to check with other color combinations, try the [Color Contrast Checker](#).

Decimal 11705478 Background



This preview shows how black text looks on a background with the Decimal color 11705478.



This preview shows how white text looks on a background with the Decimal color 11705478.

Color Blindness Simulation

Color vision deficiency is a very complex topic, and I could not describe the different causes any better than Wikipedia does, so if you want to learn more, you should check out their [article about color blindness](#).


Dichromacy



Original Color
11705478

Protanopia
11050888

Deuteranopia
12098182



Tritanopia
11966628

Trichromacy



Original Color
11705478

Protanomaly
11312775

Deuteranomaly
11967366

Tritanomaly
11901337

Monochromacy



Original Color
11705478

Achromatopsia
10526880

Achromatomaly
10985367

CSS Examples

Text

The CSS property to change the color of the text to Decimal 11705478 is called "color". The color property can be set on classes, ids or directly on the HTML element.

This example shows how text in the color #B29C86 looks like.

```
.text, #text, p{  
    color:#B29C86  
}
```

If you want to add a text shadow in that color use the text-shadow property, you can generate a text shadow directly with our [CSS Text Shadow Generator](#).

Here you see how black text with a 4 pixel #B29C86 colored shadow looks like.

```
.shadow{ text-shadow: 4px 4px 2px #B29C86  
}
```

Border

The CSS property to change the border of an element to Decimal 11705478 is called "border". The border property can be set on classes, ids or directly on the HTML element.

This example shows the color as border, it can be applied via the CSS property "border" or "border-color".

```
.border, #border, table{ border:4px solid  
#B29C86 }
```

If only the border color should be changed use the property `border-color`.

```
.border{ border-color:#B29C86 }
```

If you want to add a box shadow in that color use:

Here you see how a box with a 4 pixel #B29C86 colored shadow looks like.

```
.boxshadow{ -moz-box-shadow:4px 4px 4px  
4px #B29C86; -webkit-box-shadow:4px 4px  
4px 4px #B29C86; box-shadow:4px 4px 4px  
4px #B29C86 }
```

Background

The CSS property to change the background color of an element to Decimal 11705478 is called "background". The background property can be set on classes, ids or directly on the HTML element.

```
.background, #background, body{  
background:#B29C86 }
```

If only the background color should be changed can be used:

```
.background{ background-color:#B29C86 }
```

This example shows the color as background, it is applied via the CSS property "background".

To optimize and compress your CSS code, you can use our [online CSS compressor and optimizer](#) based on csstidy. If you want to create a linear or radial gradient as background or border, check our [CSS Gradient Generator](#).

Hey! You found this booklet interesting? Support Converting Colors with the new Membership Option!

The pro membership hides all ads, plus gives you double the colors in the color bucket, and more awesome pro features!

[Learn more, Memberships starting at \\$2.50/m!](#)

**Follow me
on Twitter!**

@ConvertingColor