

Converting Colors

Decimal(11707306)

Have a look what the booklet for
Decimal(11707306) contains.

Decimal(11707306)	3
<i>Conversions</i>	4
<i>Details</i>	6
<i>Harmonies</i>	11
<i>Previews</i>	23
<i>Color Blindness Simulation</i>	26
<i>CSS Examples</i>	29

Color

Decimal(11707306)

Conversions

Conversions Part 1

Format	Color
Hex	B2A3AA
RGB	178, 163, 170
RGB Percent	70%, 64%, 67%
CMY	0.3020, 0.3608, 0.3333
CMYK	0.00, 0.08, 0.04, 0.30
HSL	332°, 9%, 67%
HSV	332°, 8%, 70%
XYZ	38.7130, 38.5616, 43.4330
YIQ	168.2830, 6.6930, 5.3570

Conversions

Conversions Part 2

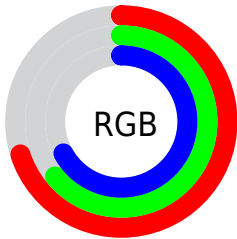
Format	Color
RYB	178, 163, 170
Decimal	11707306
CIELab	68.43, 6.70, -1.65
CIELCh	68, 6.899, 346.145
Yxy	38.5616, 0.3207, 0.3195
Android (android.graphics.Color)	4289897386 (0xFFB2A3AA)
YUV	168.2830, 0.8465, 8.5218
Hunter-Lab	62.0980, 2.6085, 1.9997

Details

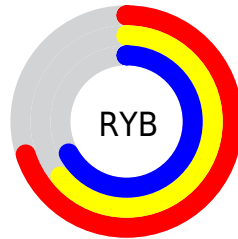
The Decimal color **11707306** is a light color, and the websafe version is hex **999999**. A complement of this color would be **10728107**, and the grayscale version is **11053224**.

A 20% lighter version of the original color is **15391457**, and **8220534** is the 20% darker color. If you saturate the color by 10%, you get **11702689**, and if you desaturate by 10%, it is **11711923**.

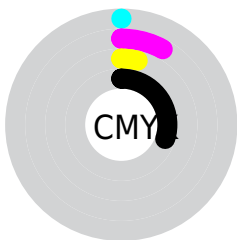
Distribution



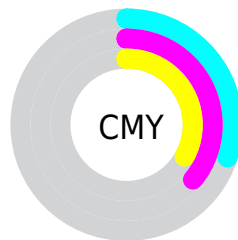
- Red (70%)
- Green (64%)
- Blue (67%)



- Red (70%)
- Yellow (64%)
- Blue (67%)



- Cyan (0%)
- Magenta (8%)
- Yellow (4%)
- Black (30%)



- Cyan (30%)
- Magenta (36%)
- Yellow (33%)

Brightness & Saturation Gradients

These gradients show how the Decimal color 11707306 changes by changing the brightness by 10 percent. The first figure shows a shift by +10% for each color and the second figure -10%.

Similar to the brightness gradients but the following saturation gradients show a change of the Decimal color 11707306 by changing the saturation by 10% instead.

 11707306

 11707306

16777215

 9931152

 15391457

 8220534

 16774910

 6575965

 4997190

 3549743

 2102555

 0

 11707306

 11707306

 11702689

 11711923

 11698071

 11716541

 11693710


 11720902

 11689092

 11725520

 11684475


 11730137

 11679857

 11730915

 11675240

 11730924

 11670878

 11730934

 11666261

 11730943

Harmonies

Analogous

The Analogous color harmony consists of three colors that are next to each other on the color wheel.



11314352



11707306



11903908

Triad

The Triadic color harmony groups three colors that are evenly spaced from another and form a triangle on the color wheel.



11707306



11118491



10070704

Complementary

The Complementary color scheme is a pair of colors which are on the opposite of each other on the color wheel.



11707306



10728107

Split Complementary

Split-complementary colors differ from the complementary color scheme. The scheme consists of three colors, the original color and two neighbors of the complement color.



10005418



11707306



10594718

Square

The Square scheme is like the rectangle color scheme, but the four colors are evenly spaced on the color wheel.



11707306



11511195



10201764



10332339

Rectangle

The Rectangle color scheme consists of four colors that form a rectangle on the color wheel.



11707306



11838368



10201764



10005166

Sweetspot

The Sweet Spot groups the original color and five complimentary colors.



11707306



15262180



11248562



7696755



16119285



7697781

Same Dimension

The Same Dimension uses a secret algorithm to generate beautiful new colors.



11707306



15258076



11707299



5853268



10027079



1703948

Inverse Universe

The Inverse Universe completely reimagines the original color for something new.



11707306



15258076



10728114



5853268



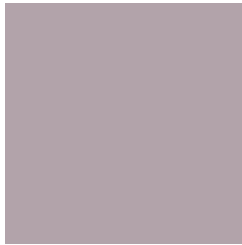
10027079



1703948

Previews

White Background



This preview shows how the Decimal color 11707306 looks on a white background.

Color Contrast Check

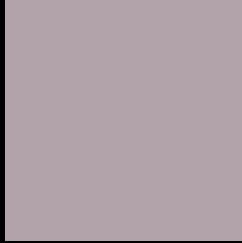
Large Text (above 18pt) WCAG AA × Fail

Any Text WCAG AA × Fail

Large Text (above 18pt) WCAG AAA × Fail

Any Text WCAG AAA × Fail

Black Background



This preview shows how the Decimal color 11707306 looks on a black background.

Color Contrast Check

Large Text (above 18pt) WCAG AA ✓ Pass

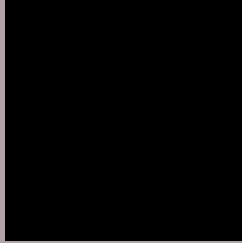
Any Text WCAG AA ✓ Pass

Large Text (above 18pt) WCAG AAA ✓ Pass

Any Text WCAG AAA ✓ Pass

If you want to check with other color combinations, try the [Color Contrast Checker](#).

Decimal 11707306 Background



This preview shows how black text looks on a background with the Decimal color 11707306.



This preview shows how white text looks on a background with the Decimal color 11707306.

Color Blindness Simulation

Color vision deficiency is a very complex topic, and I could not describe the different causes any better than Wikipedia does, so if you want to learn more, you should check out their [article about color blindness](#).

Dichromacy



Original Color
11707306

Protanopia
11052716

Deuteranopia
11903658



Tritanopia
11772591

Trichromacy



Original Color
11707306

Protanomaly
11314603

Deuteranomaly
11838122

Tritanomaly
11772589

Monochromacy



Original Color
11707306

Achromatopsia
11053224

Achromatomaly
11314857

CSS Examples

Text

The CSS property to change the color of the text to Decimal 11707306 is called "color". The color property can be set on classes, ids or directly on the HTML element.

This example shows how text in the color #B2A3AA looks like.

```
.text, #text, p{  
    color:#B2A3AA  
}
```

If you want to add a text shadow in that color use the text-shadow property, you can generate a text shadow directly with our [CSS Text Shadow Generator](#).

Here you see how black text with a 4 pixel #B2A3AA colored shadow looks like.

```
.shadow{ text-shadow: 4px 4px 2px #B2A3AA
}
```

Border

The CSS property to change the border of an element to Decimal 11707306 is called "border". The border property can be set on classes, ids or directly on the HTML element.

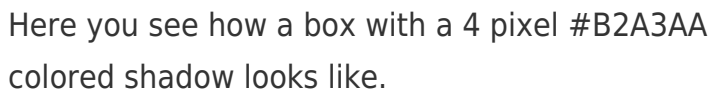
This example shows the color as border, it can be applied via the CSS property "border" or "border-color".

```
.border, #border, table{ border:4px solid
#B2A3AA }
```

If only the border color should be changed use the property `border-color`.

```
.border{ border-color:#B2A3AA }
```

If you want to add a box shadow in that color use:



Here you see how a box with a 4 pixel #B2A3AA colored shadow looks like.

```
.boxshadow{ -moz-box-shadow:4px 4px 4px  
4px #B2A3AA; -webkit-box-shadow:4px 4px  
4px 4px #B2A3AA; box-shadow:4px 4px 4px  
4px #B2A3AA }
```

Background

The CSS property to change the background color of an element to Decimal 11707306 is called "background". The background property can be set on classes, ids or directly on the HTML element.

```
.background, #background, body{  
background:#B2A3AA }
```

If only the background color should be changed can be used:

```
.background{ background-color:#B2A3AA }
```

This example shows the color as background, it is applied via the CSS property "background".

To optimize and compress your CSS code, you can use our [online CSS compressor and optimizer](#) based on csstidy. If you want to create a linear or radial gradient as background or border, check our [CSS Gradient Generator](#).

Hey! You found this booklet interesting? Support Converting Colors with the new Membership Option!

The pro membership hides all ads, plus gives you double the colors in the color bucket, and more awesome pro features!

[Learn more, Memberships starting at \\$2.50/m!](#)

**Follow me
on Twitter!**

@ConvertingColor