

Converting Colors

Decimal(11707565)

Have a look what the booklet for
Decimal(11707565) contains.

| | |
|--|----|
| Decimal(11707565) | 3 |
| <i>Conversions</i> | 4 |
| <i>Details</i> | 6 |
| <i>Harmonies</i> | 11 |
| <i>Previews</i> | 23 |
| <i>Color Blindness Simulation</i> | 26 |
| <i>CSS Examples</i> | 29 |

Color

Decimal(11707565)

Conversions

Conversions Part 1

| Format | Color |
|-------------|---------------------------|
| Hex | B2A4AD |
| RGB | 178, 164, 173 |
| RGB Percent | 70%, 64%, 68% |
| CMY | 0.3020, 0.3569, 0.3216 |
| CMYK | 0.00, 0.08, 0.03, 0.30 |
| HSL | 321°, 8%, 67% |
| HSV | 321°, 8%, 70% |
| XYZ | 39.1784, 39.0330, 45.0044 |
| YIQ | 169.2120, 5.4550, 5.7670 |

Conversions

Conversions Part 2

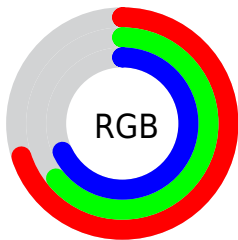
| Format | Color |
|-------------------------------------|--|
| RYB | 178, 164, 173 |
| Decimal | 11707565 |
| CIELab | 68.78, 6.70, -2.82 |
| CIELCh | 69, 7.269, 337.206 |
| Yxy | 39.0330, 0.3180, 0.3168 |
| Android (android.graphics.Color) | 4289897645 (0xFFB2A4AD) |
| YUV | 169.2120, 1.8675, 7.7071 |
| Hunter-Lab | 62.4764, 2.6020, 1.0244 |

Details

The Decimal color **11707565** is a light color, and the websafe version is hex **999999**. A complement of this color would be **10793641**, and the grayscale version is **11119017**.

A 20% lighter version of the original color is **15391716**, and **8220793** is the 20% darker color. If you saturate the color by 10%, you get **11702951**, and if you desaturate by 10%, it is **11712179**.

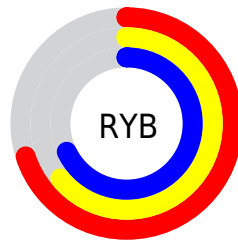
Distribution



Red (70%)

Green (64%)

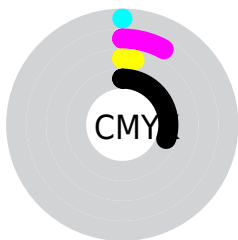
Blue (68%)



Red (70%)

Yellow (64%)

Blue (68%)

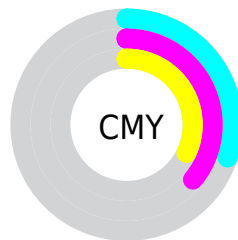


Cyan (0%)

Magenta (8%)

Yellow (3%)

Black (30%)



Cyan (30%)

Magenta (36%)

Yellow (32%)

Brightness & Saturation Gradients

These gradients show how the Decimal color 11707565 changes by changing the brightness by 10 percent. The first figure shows a shift by +10% for each color and the second figure -10%.

Similar to the brightness gradients but the following saturation gradients show a change of the Decimal color 11707565 by changing the saturation by 10% instead.



11707565



11707565

16777215



9931410



15391716



8220793



16775167



6576224



4997448



3549746



2102813



196610



0



11707565



11707565

 11702951

 11712179

 11698336

 11716794

 11693978

 11721152

 11689364

 11725766

 11684749

 11730381

 11680135

 11730899


 11675521

 11730905

 11671162

 11730912

 11666548

 11730918

Harmonies

Analogous

The Analogous color harmony consists of three colors that are next to each other on the color wheel.



11249330



11707565



11969446

Triad

The Triadic color harmony groups three colors that are evenly spaced from another and form a triangle on the color wheel.



11707565



11315355



10005423

Complementary

The Complementary color scheme is a pair of colors which are on the opposite of each other on the color wheel.



11707565



10793641

Split Complementary

Split-complementary colors differ from the complementary color scheme. The scheme consists of three colors, the original color and two neighbors of the complement color.



10071209



11707565



10791581

Square

The Square scheme is like the rectangle color scheme, but the four colors are evenly spaced on the color wheel.



11707565



11708060



10333090



10267316

Rectangle

The Rectangle color scheme consists of four colors that form a rectangle on the color wheel.



11707565



11969698



10333090



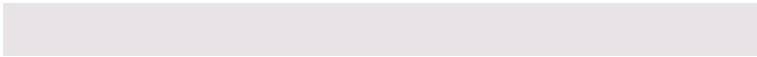
10005677

Sweetspot

The Sweet Spot groups the original color and five complimentary colors.



11707565



15262694



11117746



7697268



16119285



7697781

Same Dimension

The Same Dimension uses a secret algorithm to generate beautiful new colors.



11707565



15258593



11707558



5853270



10027106



1703952

Inverse Universe

The Inverse Universe completely reimagines the original color for something new.



11707565



15258593



10793648



5853270



10027106



1703952

Previews

White Background



This preview shows how the Decimal color 11707565 looks on a white background.

Color Contrast Check

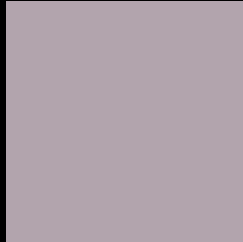
Large Text (above 18pt) WCAG AA × Fail

Any Text WCAG AA × Fail

Large Text (above 18pt) WCAG AAA × Fail

Any Text WCAG AAA × Fail

Black Background



This preview shows how the Decimal color 11707565 looks on a black background.

Color Contrast Check

Large Text (above 18pt) WCAG AA ✓ Pass

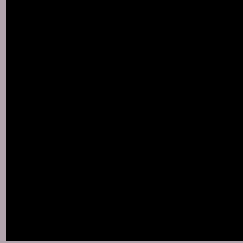
Any Text WCAG AA ✓ Pass

Large Text (above 18pt) WCAG AAA ✓ Pass

Any Text WCAG AAA ✓ Pass

If you want to check with other color combinations, try the [Color Contrast Checker](#).

Decimal 11707565 Background



This preview shows how black text looks on a background with the Decimal color 11707565.



This preview shows how white text looks on a background with the Decimal color 11707565.

Color Blindness Simulation

Color vision deficiency is a very complex topic, and I could not describe the different causes any better than Wikipedia does, so if you want to learn more, you should check out their [article about color blindness](#).

Dichromacy



Original Color
11707565

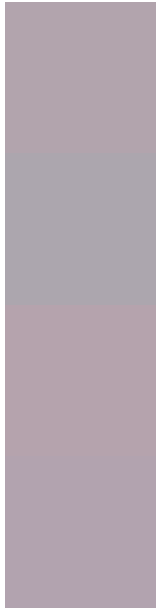
Protanopia
11118511

Deuteranopia
11969453



Tritanopia
11707312

Trichromacy



Original Color
11707565

Protanomaly
11314862

Deuteranomaly
11903917

Tritanomaly
11707311

Monochromacy



Original Color
11707565

Achromatopsia
11119017

Achromatomaly
11315114

CSS Examples

Text

The CSS property to change the color of the text to Decimal 11707565 is called "color". The color property can be set on classes, ids or directly on the HTML element.

This example shows how text in the color #B2A4AD looks like.

```
.text, #text, p{  
  color:#B2A4AD  
}
```

If you want to add a text shadow in that color use the text-shadow property, you can generate a text shadow directly with our [CSS Text Shadow Generator](#).

Here you see how black text with a 4 pixel #B2A4AD colored shadow looks like.

```
.shadow{ text-shadow: 4px 4px 2px #B2A4AD
}
```

Border

The CSS property to change the border of an element to Decimal 11707565 is called "border". The border property can be set on classes, ids or directly on the HTML element.

This example shows the color as border, it can be applied via the CSS property "border" or "border-color".

```
.border, #border, table{ border:4px solid
#B2A4AD }
```

If only the border color should be changed use the property `border-color`.

```
.border{ border-color:#B2A4AD }
```

If you want to add a box shadow in that color use:

Here you see how a box with a 4 pixel #B2A4AD colored shadow looks like.

```
.boxshadow{ -moz-box-shadow:4px 4px 4px  
4px #B2A4AD; -webkit-box-shadow:4px 4px  
4px 4px #B2A4AD; box-shadow:4px 4px 4px  
4px #B2A4AD }
```

Background

The CSS property to change the background color of an element to Decimal 11707565 is called "background". The background property can be set on classes, ids or directly on the HTML element.

```
.background, #background, body{  
background:#B2A4AD }
```

If only the background color should be changed can be used:

```
.background{ background-color:#B2A4AD }
```

This example shows the color as background, it is applied via the CSS property "background".

To optimize and compress your CSS code, you can use our [online CSS compressor and optimizer](#) based on csstidy. If you want to create a linear or radial gradient as background or border, check our [CSS Gradient Generator](#).

Hey! You found this booklet interesting? Support Converting Colors with the new Membership Option!

The pro membership hides all ads, plus gives you double the colors in the color bucket, and more awesome pro features!

[Learn more, Memberships starting at \\$2.50/m!](#)

**Follow me
on Twitter!**

@ConvertingColor