

Converting Colors

Decimal(11761990)

Have a look what the booklet for
Decimal(11761990) contains.

Decimal(11761990)	3
<i>Conversions</i>	4
<i>Details</i>	6
<i>Harmonies</i>	11
<i>Previews</i>	23
<i>Color Blindness Simulation</i>	26
<i>CSS Examples</i>	29

Color

Decimal(11761990)

Conversions

Conversions Part 1

Format	Color
Hex	B37946
RGB	179, 121, 70
RGB Percent	70%, 47%, 27%
CMY	0.2980, 0.5255, 0.7255
CMYK	0.00, 0.32, 0.61, 0.30
HSL	28°, 44%, 49%
HSV	28°, 61%, 70%
XYZ	26.5333, 23.7006, 8.9706
YIQ	132.5280, 50.9390, -3.5650

Conversions

Conversions Part 2

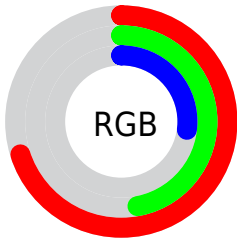
Format	Color
RYB	179, 166, 70
Decimal	11761990
CIELab	55.79, 17.35, 36.74
CIELCh	56, 40.636, 64.720
Yxy	23.7006, 0.4482, 0.4003
Android (android.graphics.Color)	4289952070 (0xFFB37946)
YUV	132.5280, -30.8263, 40.7559
Hunter-Lab	48.6833, 12.0899, 23.1533

Details

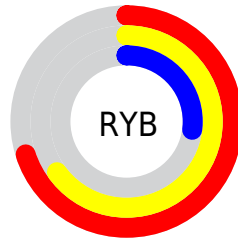
The Decimal color **11761990** is a dark color, and the websafe version is hex **996633**. A complement of this color would be **4620467**, and the grayscale version is **8750469**.

A 20% lighter version of the original color is **15641976**, and **8079383** is the 20% darker color. If you saturate the color by 10%, you get **11759412**, and if you desaturate by 10%, it is **11764568**.

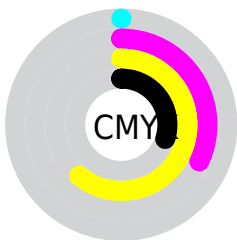
Distribution



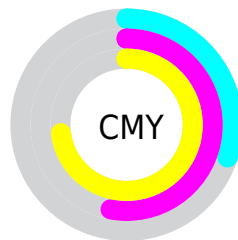
- Red (70%)
- Green (47%)
- Blue (27%)



- Red (70%)
- Yellow (65%)
- Blue (27%)



- Cyan (0%)
- Magenta (32%)
- Yellow (61%)
- Black (30%)



- Cyan (30%)
- Magenta (53%)
- Yellow (73%)

Brightness & Saturation Gradients

These gradients show how the Decimal color 11761990 changes by changing the brightness by 10 percent. The first figure shows a shift by +10% for each color and the second figure -10%.

Similar to the brightness gradients but the following saturation gradients show a change of the Decimal color 11761990 by changing the saturation by 10% instead.

 11761990  11761990

16777215  9855022

 15641976  8079383

 16763282  6238464

 16770477  4529152

 16777160  2819584

 16777189  0

 11761990  11761990

 11759412  11764568

 11757090  11766890

■ 11754512

■ 11769468

■ 11752448

■ 11771790

■ 11774368

■ 11776689

■ 11779267

■ 11781589

■ 11784167

Harmonies

Analogous

The Analogous color harmony consists of three colors that are next to each other on the color wheel.



12938591



11761990



9864765

Triad

The Triadic color harmony groups three colors that are evenly spaced from another and form a triangle on the color wheel.



11761990



39050



9468608

Complementary

The Complementary color scheme is a pair of colors which are on the opposite of each other on the color wheel.



11761990



4620467

Split Complementary

Split-complementary colors differ from the complementary color scheme. The scheme consists of three colors, the original color and two neighbors of the complement color.



5539788



11761990



38829

Square

The Square scheme is like the rectangle color scheme, but the four colors are evenly spaced on the color wheel.



11761990



4298086



37317



11955876

Rectangle

The Rectangle color scheme consists of four colors that form a rectangle on the color wheel.



11761990



8293443



37317



8355782

Sweetspot

The Sweet Spot groups the original color and five complimentary colors.



11761990



15258302



11748992



7694427



16119285



7697781

Same Dimension

The Same Dimension uses a secret algorithm to generate beautiful new colors.



11761990



15240767



11775814



5854544



10045440



1707008

Inverse Universe

The Inverse Universe completely reimagines the original color for something new.



4620467



4168168



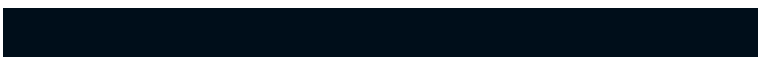
4606643



5264729



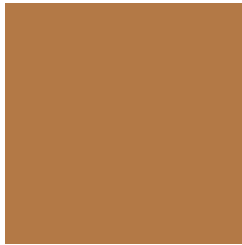
20889



3610

Previews

White Background



This preview shows how the Decimal color 11761990 looks on a white background.

Color Contrast Check

Large Text (above 18pt) WCAG AA ✓ Pass

Any Text WCAG AA × Fail

Large Text (above 18pt) WCAG AAA × Fail

Any Text WCAG AAA × Fail

Black Background



This preview shows how the Decimal color 11761990 looks on a black background.

Color Contrast Check

Large Text (above 18pt) WCAG AA ✓ Pass

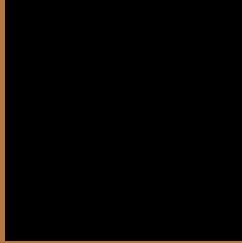
Any Text WCAG AA ✓ Pass

Large Text (above 18pt) WCAG AAA ✓ Pass

Any Text WCAG AAA × Fail

If you want to check with other color combinations, try the [Color Contrast Checker](#).

Decimal 11761990 Background



This preview shows how black text looks on a background with the Decimal color 11761990.



This preview shows how white text looks on a background with the Decimal color 11761990.

Color Blindness Simulation

Color vision deficiency is a very complex topic, and I could not describe the different causes any better than Wikipedia does, so if you want to learn more, you should check out their [article about color blindness](#).

Dichromacy



Original Color
11761990

Protanopia
9668171

Deuteranopia
10846276



Tritanopia
12022651

Trichromacy



Original Color
11761990

Protanomaly
10453321

Deuteranomaly
11173189

Tritanomaly
11957608

Monochromacy



Original Color
11761990

Achromatopsia
8750469

Achromatomaly
9863534

CSS Examples

Text

The CSS property to change the color of the text to Decimal 11761990 is called "color". The color property can be set on classes, ids or directly on the HTML element.

This example shows how text in the color #B37946 looks like.

```
.text, #text, p{  
    color:#B37946  
}
```

If you want to add a text shadow in that color use the text-shadow property, you can generate a text shadow directly with our [CSS Text Shadow Generator](#).

Here you see how black text with a 4 pixel #B37946 colored shadow looks like.

```
.shadow{ text-shadow: 4px 4px 2px #B37946
}
```

Border

The CSS property to change the border of an element to Decimal 11761990 is called "border". The border property can be set on classes, ids or directly on the HTML element.

This example shows the color as border, it can be applied via the CSS property "border" or "border-color".

```
.border, #border, table{ border:4px solid
#B37946 }
```

If only the border color should be changed use the property `border-color`.

```
.border{ border-color:#B37946 }
```

If you want to add a box shadow in that color use:

Here you see how a box with a 4 pixel #B37946 colored shadow looks like.

```
.boxshadow{ -moz-box-shadow:4px 4px 4px  
4px #B37946; -webkit-box-shadow:4px 4px  
4px 4px #B37946; box-shadow:4px 4px 4px  
4px #B37946 }
```

Background

The CSS property to change the background color of an element to Decimal 11761990 is called "background". The background property can be set on classes, ids or directly on the HTML element.

```
.background, #background, body{  
background:#B37946 }
```

If only the background color should be changed can be used:

```
.background{ background-color:#B37946 }
```

This example shows the color as background, it is applied via the CSS property "background".

To optimize and compress your CSS code, you can use our [online CSS compressor and optimizer](#) based on csstidy. If you want to create a linear or radial gradient as background or border, check our [CSS Gradient Generator](#).

Hey! You found this booklet interesting? Support Converting Colors with the new Membership Option!

The pro membership hides all ads, plus gives you double the colors in the color bucket, and more awesome pro features!

[Learn more, Memberships starting at \\$2.50/m!](#)

**Follow me
on Twitter!**

@ConvertingColor