

Converting Colors

Decimal(11764605)

Have a look what the booklet for
Decimal(11764605) contains.

Decimal(11764605)	3
<i>Conversions</i>	4
<i>Details</i>	6
<i>Harmonies</i>	11
<i>Previews</i>	23
<i>Color Blindness Simulation</i>	26
<i>CSS Examples</i>	29

Color

Decimal(11764605)

Conversions

Conversions Part 1

Format	Color
Hex	B3837D
RGB	179, 131, 125
RGB Percent	70%, 51%, 49%
CMY	0.2980, 0.4863, 0.5098
CMYK	0.00, 0.27, 0.30, 0.30
HSL	7°, 26%, 60%
HSV	7°, 30%, 70%
XYZ	30.4084, 27.2970, 23.0682
YIQ	144.6680, 30.5340, 8.3100

Conversions

Conversions Part 2

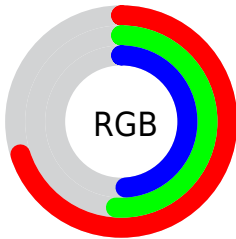
Format	Color
R_{YB}	179, 132, 125
Decimal	11764605
CIE Lab	59.25, 17.62, 10.51
CIE LCh	59, 20.520, 30.808
Yxy	27.2970, 0.3765, 0.3379
Android (android.graphics.Color)	4289954685 (0xFFB3837D)
YUV	144.6680, -9.6963, 30.1092
Hunter-Lab	52.2465, 12.4587, 10.3945

Details

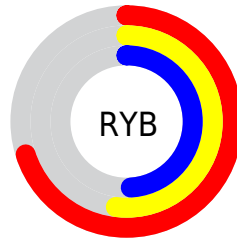
The Decimal color **11764605** is a dark color, and the websafe version is hex **CC9999**. A complement of this color would be **8236467**, and the grayscale version is **9539985**.

A 20% lighter version of the original color is **15513778**, and **8212812** is the 20% darker color. If you saturate the color by 10%, you get **11760491**, and if you desaturate by 10%, it is **11768719**.

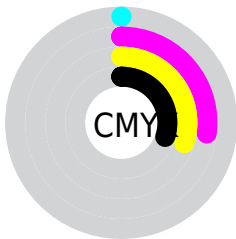
Distribution



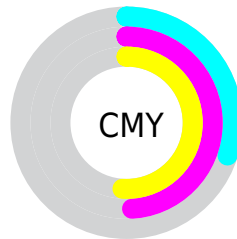
- Red (70%)
- Green (51%)
- Blue (49%)



- Red (70%)
- Yellow (52%)
- Blue (49%)



- Cyan (0%)
- Magenta (27%)
- Yellow (30%)
- Black (30%)




- Cyan (30%)
- Magenta (49%)
- Yellow (51%)

Brightness & Saturation Gradients

These gradients show how the Decimal color 11764605 changes by changing the brightness by 10 percent. The first figure shows a shift by +10% for each color and the second figure -10%.

Similar to the brightness gradients but the following saturation gradients show a change of the Decimal color 11764605 by changing the saturation by 10% instead.

 11764605  11764605

16777215  9988708

 15513778  8212812

 16766157  6502965


 16773353  4858912

 3280649

 1835009

 0

 11764605  11764605

 11760491  11768719

 11756377

 11772833

 11752263

 11776947

 11748149

 11781061

 11744035

 11785174

 11740178

 11789032

 11736064

 11793146

 11796479

Harmonies

Analogous

The Analogous color harmony consists of three colors that are next to each other on the color wheel.



11698831



11764605



11241584

Triad

The Triadic color harmony groups three colors that are evenly spaced from another and form a triangle on the color wheel.



11764605



7575421



8032434

Complementary

The Complementary color scheme is a pair of colors which are on the opposite of each other on the color wheel.



11764605



8236467

Split Complementary

Split-complementary colors differ from the complementary color scheme. The scheme consists of three colors, the original color and two neighbors of the complement color.



6591917



11764605



6461838

Square

The Square scheme is like the rectangle color scheme, but the four colors are evenly spaced on the color wheel.



11764605



8950639



6002848



9603758

Rectangle

The Rectangle color scheme consists of four colors that form a rectangle on the color wheel.



11764605



10587243



6002848



7508658

Sweetspot

The Sweet Spot groups the original color and five complimentary colors.



11764605



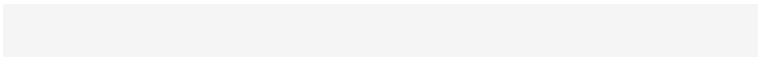
15259091



11763118



7694952



16119285



7697781

Same Dimension

The Same Dimension uses a secret algorithm to generate beautiful new colors.



11764605



15244949



11771261



5853520



10031360



1704704

Inverse Universe

The Inverse Universe completely reimagines the original color for something new.



8236467



9822184



8229811



5265497



34969



5914

Previews

White Background



This preview shows how the Decimal color 11764605 looks on a white background.

Color Contrast Check

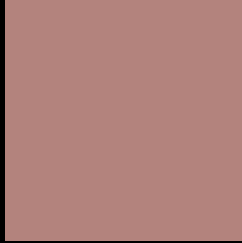
Large Text (above 18pt) WCAG AA ✓ Pass

Any Text WCAG AA ✗ Fail

Large Text (above 18pt) WCAG AAA ✗ Fail

Any Text WCAG AAA ✗ Fail

Black Background



This preview shows how the Decimal color 11764605 looks on a black background.

Color Contrast Check

Large Text (above 18pt) WCAG AA ✓ Pass

Any Text WCAG AA ✓ Pass

Large Text (above 18pt) WCAG AAA ✓ Pass

Any Text WCAG AAA × Fail

If you want to check with other color combinations, try the [Color Contrast Checker](#).

Decimal 11764605 Background



This preview shows how black text looks on a background with the Decimal color 11764605.



This preview shows how white text looks on a background with the Decimal color 11764605.

Color Blindness Simulation

Color vision deficiency is a very complex topic, and I could not describe the different causes any better than Wikipedia does, so if you want to learn more, you should check out their [article about color blindness](#).

Dichromacy



Original Color
11764605

Protanopia
9735811

Deuteranopia
10783356



Tritanopia
11829643

Trichromacy



Original Color
11764605

Protanomaly
10455681

Deuteranomaly
11110268

Tritanomaly
11829894

Monochromacy



Original Color
11764605

Achromatopsia
9539985

Achromatomaly
10325130

CSS Examples

Text

The CSS property to change the color of the text to Decimal 11764605 is called "color". The color property can be set on classes, ids or directly on the HTML element.

This example shows how text in the color #B3837D looks like.

```
.text, #text, p{  
  color:#B3837D  
}
```

If you want to add a text shadow in that color use the text-shadow property, you can generate a text shadow directly with our [CSS Text Shadow Generator](#).

Here you see how black text with a 4 pixel #B3837D colored shadow looks like.

```
.shadow{ text-shadow: 4px 4px 2px #B3837D
}
```

Border

The CSS property to change the border of an element to Decimal 11764605 is called "border". The border property can be set on classes, ids or directly on the HTML element.

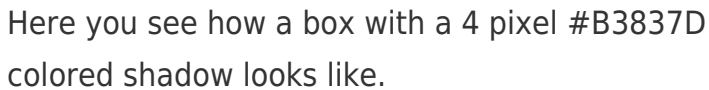
This example shows the color as border, it can be applied via the CSS property "border" or "border-color".

```
.border, #border, table{ border:4px solid
#B3837D }
```

If only the border color should be changed use the property `border-color`.

```
.border{ border-color:#B3837D }
```

If you want to add a box shadow in that color use:



Here you see how a box with a 4 pixel #B3837D colored shadow looks like.

```
.boxshadow{ -moz-box-shadow:4px 4px 4px  
4px #B3837D; -webkit-box-shadow:4px 4px  
4px 4px #B3837D; box-shadow:4px 4px 4px  
4px #B3837D }
```

Background

The CSS property to change the background color of an element to Decimal 11764605 is called "background". The background property can be set on classes, ids or directly on the HTML element.

```
.background, #background, body{  
background:#B3837D }
```

If only the background color should be changed can be used:

```
.background{ background-color:#B3837D }
```

This example shows the color as background, it is applied via the CSS property "background".

To optimize and compress your CSS code, you can use our [online CSS compressor and optimizer](#) based on csstidy. If you want to create a linear or radial gradient as background or border, check our [CSS Gradient Generator](#).

Hey! You found this booklet interesting? Support Converting Colors with the new Membership Option!

The pro membership hides all ads, plus gives you double the colors in the color bucket, and more awesome pro features!

[Learn more, Memberships starting at \\$2.50/m!](#)

**Follow me
on Twitter!**

@ConvertingColor