

Converting Colors

Decimal(11765079)

Have a look what the booklet for
Decimal(11765079) contains.

Decimal(11765079)	3
<i>Conversions</i>	4
<i>Details</i>	6
<i>Harmonies</i>	11
<i>Previews</i>	23
<i>Color Blindness Simulation</i>	26
<i>CSS Examples</i>	29

Color

Decimal(11765079)

Conversions

Conversions Part 1

Format	Color
Hex	B38557
RGB	179, 133, 87
RGB Percent	70%, 52%, 34%
CMY	0.2980, 0.4784, 0.6588
CMYK	0.00, 0.26, 0.51, 0.30
HSL	30°, 38%, 52%
HSV	30°, 51%, 70%
XYZ	28.6982, 27.0469, 12.7248
YIQ	141.5100, 42.1820, -4.5540

Conversions

Conversions Part 2

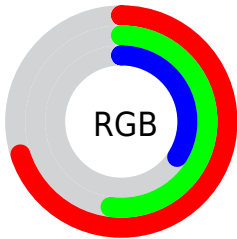
Format	Color
RYB	179, 179, 87
Decimal	11765079
CIELab	59.02, 12.08, 31.56
CIELCh	59, 33.793, 69.049
Yxy	27.0469, 0.4191, 0.3950
Android (android.graphics.Color)	4289955159 (0xFFB38557)
YUV	141.5100, -26.8734, 32.8787
Hunter-Lab	52.0066, 7.4881, 21.8977

Details

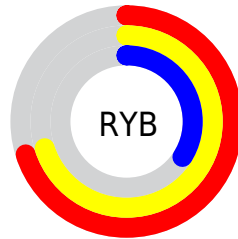
The Decimal color **11765079** is a dark color, and the websafe version is hex **CC9966**. A complement of this color would be **5735859**, and the grayscale version is **9342606**.

A 20% lighter version of the original color is **15579786**, and **8147752** is the 20% darker color. If you saturate the color by 10%, you get **11762757**, and if you desaturate by 10%, it is **11767401**.

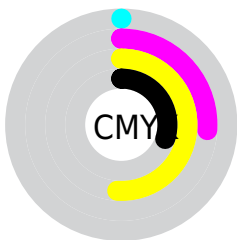
Distribution



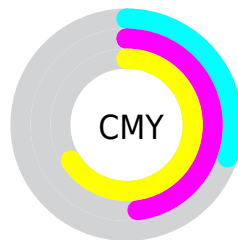
- Red (70%)
- Green (52%)
- Blue (34%)



- Red (70%)
- Yellow (70%)
- Blue (34%)



- Cyan (0%)
- Magenta (26%)
- Yellow (51%)
- Black (30%)




- Cyan (30%)
- Magenta (48%)
- Yellow (66%)

Brightness & Saturation Gradients

These gradients show how the Decimal color 11765079 changes by changing the brightness by 10 percent. The first figure shows a shift by +10% for each color and the second figure -10%.

Similar to the brightness gradients but the following saturation gradients show a change of the Decimal color 11765079 by changing the saturation by 10% instead.

 11765079

 11765079

16777215

 9923647

 15579786

 8147752

 16766628

 6372370

 16773823

 4728320

 16777179

 3019264

 16777208

 1179648

 0

 11765079

 11765079

 11762757

 11767401

■ 11760435

■ 11769723

■ 11758113

■ 11772045

■ 11755791

■ 11774367

■ 11753984

■ 11776689

■ 11779010

■ 11781332

■ 11783654

■ 11785976

Harmonies

Analogous

The Analogous color harmony consists of three colors that are next to each other on the color wheel.



12876650



11765079



10063699

Triad

The Triadic color harmony groups three colors that are evenly spaced from another and form a triangle on the color wheel.



11765079



2530966



10322876

Complementary

The Complementary color scheme is a pair of colors which are on the opposite of each other on the color wheel.



11765079



5735859

Split Complementary

Split-complementary colors differ from the complementary color scheme. The scheme consists of three colors, the original color and two neighbors of the complement color.



7507656



11765079



40114

Square

The Square scheme is like the rectangle color scheme, but the four colors are evenly spaced on the color wheel.



11765079



5479544



3971013



12221092

Rectangle

The Rectangle color scheme consists of four colors that form a rectangle on the color wheel.



11765079



8688985



3971013



9471938

Sweetspot

The Sweet Spot groups the original color and five complimentary colors.



11765079



15259589



11753349



7695200



16119285



7697781

Same Dimension

The Same Dimension uses a secret algorithm to generate beautiful new colors.



11765079



15245400



11776855



5854544



10046720



1707264

Inverse Universe

The Inverse Universe completely reimagines the original color for something new.



5735859



5808360



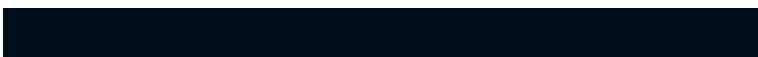
5724083



5264729



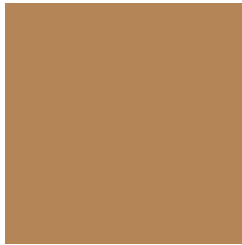
19865



3354

Previews

White Background



This preview shows how the Decimal color 11765079 looks on a white background.

Color Contrast Check

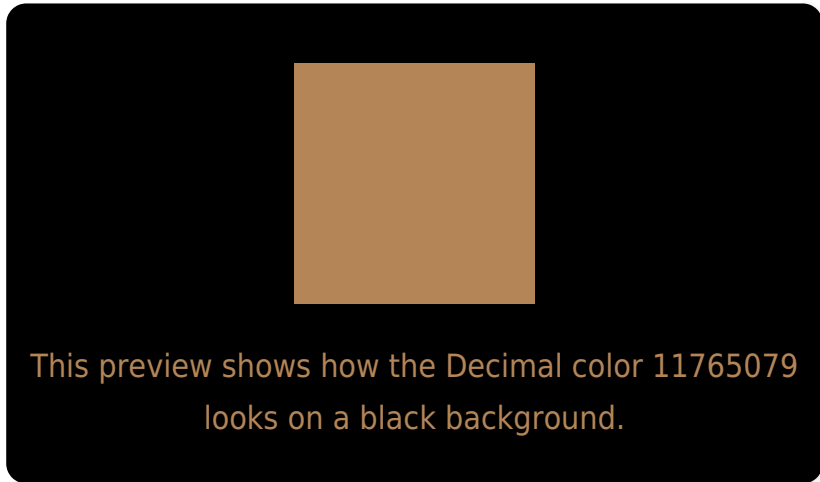
Large Text (above 18pt) WCAG AA ✓ Pass

Any Text WCAG AA × Fail

Large Text (above 18pt) WCAG AAA × Fail

Any Text WCAG AAA × Fail

Black Background



Color Contrast Check

Large Text (above 18pt) WCAG AA ✓ Pass

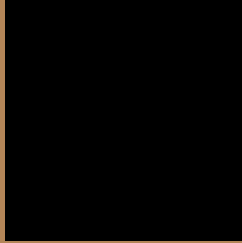
Any Text WCAG AA ✓ Pass

Large Text (above 18pt) WCAG AAA ✓ Pass

Any Text WCAG AAA × Fail

If you want to check with other color combinations, try the [Color Contrast Checker](#).

Decimal 11765079 Background



This preview shows how black text looks on a background with the Decimal color 11765079.



This preview shows how white text looks on a background with the Decimal color 11765079.

Color Blindness Simulation

Color vision deficiency is a very complex topic, and I could not describe the different causes any better than Wikipedia does, so if you want to learn more, you should check out their [article about color blindness](#).

Dichromacy



Original Color
11765079

Protanopia
10194523

Deuteranopia
11307094

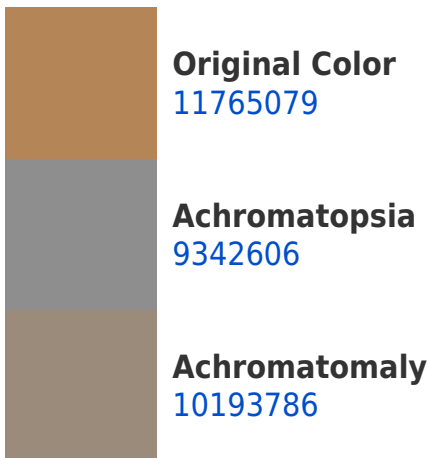


Tritanopia
12025737

Trichromacy



Monochromacy



CSS Examples

Text

The CSS property to change the color of the text to Decimal 11765079 is called "color". The color property can be set on classes, ids or directly on the HTML element.

This example shows how text in the color #B38557 looks like.

```
.text, #text, p{  
  color:#B38557  
}
```

If you want to add a text shadow in that color use the text-shadow property, you can generate a text shadow directly with our [CSS Text Shadow Generator](#).

Here you see how black text with a 4 pixel #B38557 colored shadow looks like.

```
.shadow{ text-shadow: 4px 4px 2px #B38557  
}
```

Border

The CSS property to change the border of an element to Decimal 11765079 is called "border". The border property can be set on classes, ids or directly on the HTML element.

This example shows the color as border, it can be applied via the CSS property "border" or "border-color".

```
.border, #border, table{ border:4px solid  
#B38557 }
```

If only the border color should be changed use the property `border-color`.

```
.border{ border-color:#B38557 }
```

If you want to add a box shadow in that color use:

Here you see how a box with a 4 pixel #B38557 colored shadow looks like.

```
.boxshadow{ -moz-box-shadow:4px 4px 4px  
4px #B38557; -webkit-box-shadow:4px 4px  
4px 4px #B38557; box-shadow:4px 4px 4px  
4px #B38557 }
```

Background

The CSS property to change the background color of an element to Decimal 11765079 is called "background". The background property can be set on classes, ids or directly on the HTML element.

```
.background, #background, body{  
background:#B38557 }
```

If only the background color should be changed can be used:

```
.background{ background-color:#B38557 }
```

This example shows the color as background, it is applied via the CSS property "background".

To optimize and compress your CSS code, you can use our [online CSS compressor and optimizer](#) based on csstidy. If you want to create a linear or radial gradient as background or border, check our [CSS Gradient Generator](#).

Hey! You found this booklet interesting? Support Converting Colors with the new Membership Option!

The pro membership hides all ads, plus gives you double the colors in the color bucket, and more awesome pro features!

[Learn more, Memberships starting at \\$2.50/m!](#)

**Follow me
on Twitter!**

@ConvertingColor