

# Converting Colors

Decimal(11765367)

Have a look what the booklet for  
Decimal(11765367) contains.

<b>Decimal(11765367)</b> .....	3
<b><i>Conversions</i></b> .....	4
<b><i>Details</i></b> .....	6
<b><i>Harmonies</i></b> .....	11
<b><i>Previews</i></b> .....	23
<b><i>Color Blindness Simulation</i></b> .....	26
<b><i>CSS Examples</i></b> .....	29

**Color**

**Decimal(11765367)**

# Conversions

## Conversions Part 1

<b>Format</b>	<b>Color</b>
Hex	<a href="#">B38677</a>
RGB	<a href="#">179, 134, 119</a>
RGB Percent	<a href="#">70%, 53%, 47%</a>
CMY	<a href="#">0.2980, 0.4745, 0.5333</a>
CMYK	<a href="#">0.00, 0.25, 0.34, 0.30</a>
HSL	<a href="#">15°, 28%, 58%</a>
HSV	<a href="#">15°, 34%, 70%</a>
XYZ	<a href="#">30.4453, 27.9658, 21.2461</a>
YIQ	<a href="#">145.7450, 31.6350, 4.8750</a>

# Conversions

## Conversions Part 2

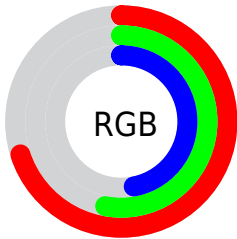
<b>Format</b>	<b>Color</b>
<b>R<sub>YB</sub></b>	179, 139, 119
Decimal	11765367
CIE <sub>Lab</sub>	59.86, 15.14, 14.79
CIE <sub>LCh</sub>	60, 21.159, 44.332
Yxy	27.9658, 0.3822, 0.3511
Android (android.graphics.Color)	4289955447 (0xFFB38677)
YUV	145.7450, -13.1853, 29.1646
Hunter-Lab	52.8827, 10.2201, 13.1977

# Details

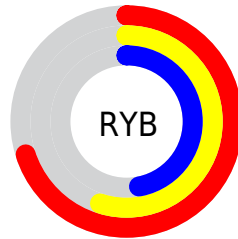
The Decimal color **11765367** is a dark color, and the websafe version is hex **CC9999**. A complement of this color would be **7840947**, and the grayscale version is **9605778**.

A 20% lighter version of the original color is **15514539**, and **8213575** is the 20% darker color. If you saturate the color by 10%, you get **11762021**, and if you desaturate by 10%, it is **11768713**.

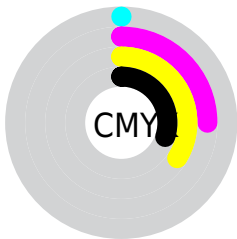
# Distribution



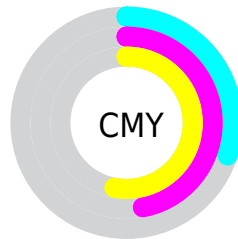
- Red (70%)
- Green (53%)
- Blue (47%)



- Red (70%)
- Yellow (55%)
- Blue (47%)



- Cyan (0%)
- Magenta (25%)
- Yellow (34%)
- Black (30%)



- Cyan (30%)
- Magenta (47%)
- Yellow (53%)

# Brightness & Saturation Gradients

These gradients show how the Decimal color 11765367 changes by changing the brightness by 10 percent. The first figure shows a shift by +10% for each color and the second figure -10%.

Similar to the brightness gradients but the following saturation gradients show a change of the Decimal color 11765367 by changing the saturation by 10% instead.



 11765367

 11765367

16777215

 9989470

 15514539

 8213575

 16766919

 6503728


 16774371

 4859675

 3281409

 1835009

 0

 11765367

 11765367

 11762021

 11768713

 11758419

 11772315

 11755073

 11775661

 11751471

 11779263

 11748126

 11782609

 11744524

 11786210

 11742464

 11789556

 11792895

 11796479

# Harmonies

## Analogous

The Analogous color harmony consists of three colors that are next to each other on the color wheel.



11961224



11765367



10980461

# Triad

The Triadic color harmony groups three colors that are evenly spaced from another and form a triangle on the color wheel.



11765367



7051910



8818612

# Complementary

The Complementary color scheme is a pair of colors which are on the opposite of each other on the color wheel.



11765367



7840947

# Split Complementary

Split-complementary colors differ from the complementary color scheme. The scheme consists of three colors, the original color and two neighbors of the complement color.



7181748



11765367



6134681

# Square

The Square scheme is like the rectangle color scheme, but the four colors are evenly spaced on the color wheel.



11765367



8427381



6068650



10389675

# Rectangle

The Rectangle color scheme consists of four colors that form a rectangle on the color wheel.



11765367



10195051



6068650



8229301



# Sweetspot

The Sweet Spot groups the original color and five complimentary colors.



11765367



15259601



11761572



7695207



16119285



7697781



# Same Dimension

The Same Dimension uses a secret algorithm to generate beautiful new colors.



11765367



15245963



11773047



5854032



10036736



1705472



# Inverse Universe

The Inverse Universe completely reimagines the original color for something new.



7840947



9163240



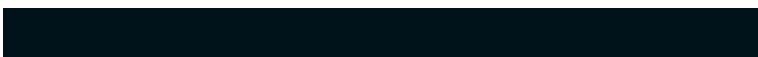
7833267



5265241



29593



4890



# Previews

## White Background



This preview shows how the Decimal color 11765367 looks on a white background.

## Color Contrast Check

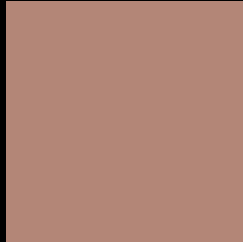
Large Text (above 18pt) WCAG AA ✓ Pass

Any Text WCAG AA × Fail

Large Text (above 18pt) WCAG AAA × Fail

Any Text WCAG AAA × Fail

# Black Background



This preview shows how the Decimal color 11765367 looks on a black background.

## Color Contrast Check

Large Text (above 18pt) WCAG AA ✓ Pass

Any Text WCAG AA ✓ Pass

Large Text (above 18pt) WCAG AAA ✓ Pass

Any Text WCAG AAA × Fail

If you want to check with other color combinations, try the [Color Contrast Checker](#).



## Decimal 11765367 Background



This preview shows how black text looks on a background with the Decimal color 11765367.



This preview shows how white text looks on a background with the Decimal color 11765367.

# Color Blindness Simulation

Color vision deficiency is a very complex topic, and I could not describe the different causes any better than Wikipedia does, so if you want to learn more, you should check out their [article about color blindness](#).


## Dichromacy



**Original Color**  
11765367

**Protanopia**  
9998460

**Deuteranopia**  
11045750



**Tritanopia**  
11895693

# Trichromacy



**Original Color**  
11765367

**Protanomaly**  
10652794

**Deuteranomaly**  
11307382

**Tritanomaly**  
11830405

# Monochromacy



**Original Color**  
11765367

**Achromatopsia**  
9605778

**Achromatomaly**  
10391176

# CSS Examples

## Text

The CSS property to change the color of the text to Decimal 11765367 is called "color". The color property can be set on classes, ids or directly on the HTML element.

This example shows how text in the color #B38677 looks like.

```
.text, #text, p{  
  color:#B38677  
}
```

If you want to add a text shadow in that color use the text-shadow property, you can generate a text shadow directly with our [CSS Text Shadow Generator](#).

Here you see how black text with a 4 pixel #B38677 colored shadow looks like.

```
.shadow{ text-shadow: 4px 4px 2px #B38677  
}
```

## Border

The CSS property to change the border of an element to Decimal 11765367 is called "border". The border property can be set on classes, ids or directly on the HTML element.

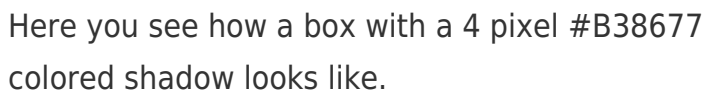
This example shows the color as border, it can be applied via the CSS property "border" or "border-color".

```
.border, #border, table{ border:4px solid  
#B38677 }
```

If only the border color should be changed use the property `border-color`.

```
.border{ border-color:#B38677 }
```

If you want to add a box shadow in that color use:



Here you see how a box with a 4 pixel #B38677 colored shadow looks like.

```
.boxshadow{ -moz-box-shadow:4px 4px 4px  
4px #B38677; -webkit-box-shadow:4px 4px  
4px 4px #B38677; box-shadow:4px 4px 4px  
4px #B38677 }
```

# Background

The CSS property to change the background color of an element to Decimal 11765367 is called "background". The background property can be set on classes, ids or directly on the HTML element.

```
.background, #background, body{  
background:#B38677 }
```

If only the background color should be changed can be used:

```
.background{ background-color:#B38677 }
```

This example shows the color as background, it is applied via the CSS property "background".

To optimize and compress your CSS code, you can use our [online CSS compressor and optimizer](#) based on csstidy. If you want to create a linear or radial gradient as background or border, check our [CSS Gradient Generator](#).



Hey! You found this booklet interesting? Support Converting Colors with the new Membership Option!

The pro membership hides all ads, plus gives you double the colors in the color bucket, and more awesome pro features!

**[Learn more, Memberships starting at \\$2.50/m!](#)**

**Follow me  
on Twitter!**

@ConvertingColor