

Converting Colors

Decimal(11766102)

Have a look what the booklet for
Decimal(11766102) contains.

Decimal(11766102)	3
<i>Conversions</i>	4
<i>Details</i>	6
<i>Harmonies</i>	11
<i>Previews</i>	23
<i>Color Blindness Simulation</i>	26
<i>CSS Examples</i>	29

Color

Decimal(11766102)

Conversions

Conversions Part 1

Format	Color
Hex	B38956
RGB	179, 137, 86
RGB Percent	70%, 54%, 34%
CMY	0.2980, 0.4627, 0.6627
CMYK	0.00, 0.23, 0.52, 0.30
HSL	33°, 38%, 52%
HSV	33°, 52%, 70%
XYZ	29.2158, 28.1469, 12.6972
YIQ	143.7440, 41.4030, -6.9570

Conversions

Conversions Part 2

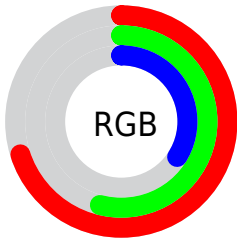
Format	Color
R_{YB}	163, 179, 86
Decimal	11766102
CIE _{Lab}	60.02, 9.76, 33.36
CIE _{LCh}	60, 34.759, 73.689
Yxy	28.1469, 0.4170, 0.4018
Android (android.graphics.Color)	4289956182 (0xFFB38956)
YUV	143.7440, -28.4678, 30.9195
Hunter-Lab	53.0537, 5.4531, 22.9479

Details

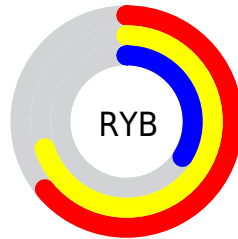
The Decimal color **11766102** is a dark color, and the websafe version is hex **CC9966**. A complement of this color would be **5669043**, and the grayscale version is **9474192**.

A 20% lighter version of the original color is **15580809**, and **8148775** is the 20% darker color. If you saturate the color by 10%, you get **11764036**, and if you desaturate by 10%, it is **11768168**.

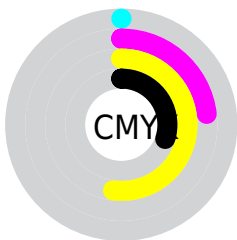
Distribution



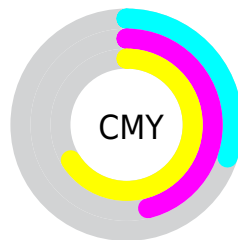
- Red (70%)
- Green (54%)
- Blue (34%)



- Red (64%)
- Yellow (70%)
- Blue (34%)



- Cyan (0%)
- Magenta (23%)
- Yellow (52%)
- Black (30%)




- Cyan (30%)
- Magenta (46%)
- Yellow (66%)

Brightness & Saturation Gradients

These gradients show how the Decimal color 11766102 changes by changing the brightness by 10 percent. The first figure shows a shift by +10% for each color and the second figure -10%.

Similar to the brightness gradients but the following saturation gradients show a change of the Decimal color 11766102 by changing the saturation by 10% instead.

 11766102  11766102

16777215  9924670

 15580809  8148775

 16767651  6373392

 16775103  4729344

 16777179  3020288

 16777207  1441792

 0

 11766102  11766102

 11764036  11768168

■ 11761970

■ 11770234

■ 11759904

■ 11772300

■ 11757838

■ 11774366

■ 11756032

■ 11776432

■ 11778753

■ 11780819

■ 11782885

■ 11784951

Harmonies

Analogous

The Analogous color harmony consists of three colors that are next to each other on the color wheel.



13008744



11766102



9933652

Triad

The Triadic color harmony groups three colors that are evenly spaced from another and form a triangle on the color wheel.



11766102



1679774



10912957

Complementary

The Complementary color scheme is a pair of colors which are on the opposite of each other on the color wheel.



11766102



5669043

Split Complementary

Split-complementary colors differ from the complementary color scheme. The scheme consists of three colors, the original color and two neighbors of the complement color.



8097740



11766102



40890

Square

The Square scheme is like the rectangle color scheme, but the four colors are evenly spaced on the color wheel.



11766102



5087358



4495819



12745635

Rectangle

The Rectangle color scheme consists of four colors that form a rectangle on the color wheel.



11766102



8493405



4495819



10061764

Sweetspot

The Sweet Spot groups the original color and five complimentary colors.



11766102



15259587



11753089



7695199



16119285



7697781

Same Dimension

The Same Dimension uses a secret algorithm to generate beautiful new colors.



11766102



15247192



11580246



5854544



10048512



1707520

Inverse Universe

The Inverse Universe completely reimagines the original color for something new.



5669043



5806568



5854899



5264473



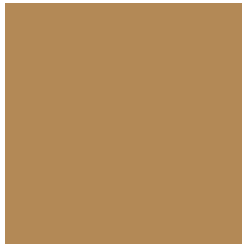
17817



3098

Previews

White Background



This preview shows how the Decimal color 11766102 looks on a white background.

Color Contrast Check

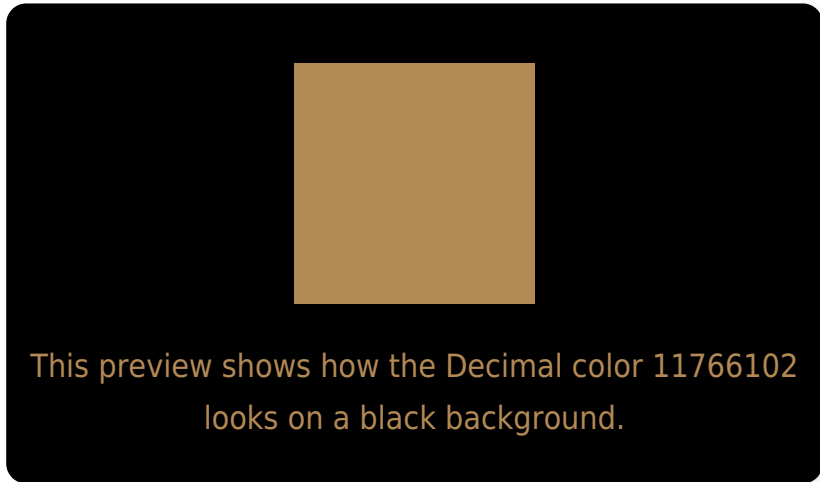
Large Text (above 18pt) WCAG AA ✓ Pass

Any Text WCAG AA × Fail

Large Text (above 18pt) WCAG AAA × Fail

Any Text WCAG AAA × Fail

Black Background



Color Contrast Check

Large Text (above 18pt) WCAG AA ✓ Pass

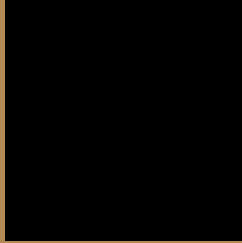
Any Text WCAG AA ✓ Pass

Large Text (above 18pt) WCAG AAA ✓ Pass

Any Text WCAG AAA × Fail

If you want to check with other color combinations, try the [Color Contrast Checker](#).

Decimal 11766102 Background



This preview shows how black text looks on a background with the Decimal color 11766102.



This preview shows how white text looks on a background with the Decimal color 11766102.

Color Blindness Simulation

Color vision deficiency is a very complex topic, and I could not describe the different causes any better than Wikipedia does, so if you want to learn more, you should check out their [article about color blindness](#).

Dichromacy



Original Color
11766102

Protanopia
10391897

Deuteranopia
11569750



Tritanopia
12092044

Trichromacy



Original Color
11766102

Protanomaly
10915416

Deuteranomaly
11635286

Tritanomaly
11961720

Monochromacy



Original Color
11766102

Achromatopsia
9474192

Achromatomaly
10325371

CSS Examples

Text

The CSS property to change the color of the text to Decimal 11766102 is called "color". The color property can be set on classes, ids or directly on the HTML element.

This example shows how text in the color #B38956 looks like.

```
.text, #text, p{  
  color:#B38956  
}
```

If you want to add a text shadow in that color use the text-shadow property, you can generate a text shadow directly with our [CSS Text Shadow Generator](#).

Here you see how black text with a 4 pixel #B38956 colored shadow looks like.

```
.shadow{ text-shadow: 4px 4px 2px #B38956
}
```

Border

The CSS property to change the border of an element to Decimal 11766102 is called "border". The border property can be set on classes, ids or directly on the HTML element.

This example shows the color as border, it can be applied via the CSS property "border" or "border-color".

```
.border, #border, table{ border:4px solid
#B38956 }
```

If only the border color should be changed use the property `border-color`.

```
.border{ border-color:#B38956 }
```

If you want to add a box shadow in that color use:

Here you see how a box with a 4 pixel #B38956 colored shadow looks like.

```
.boxshadow{ -moz-box-shadow:4px 4px 4px  
4px #B38956; -webkit-box-shadow:4px 4px  
4px 4px #B38956; box-shadow:4px 4px 4px  
4px #B38956 }
```

Background

The CSS property to change the background color of an element to Decimal 11766102 is called "background". The background property can be set on classes, ids or directly on the HTML element.

```
.background, #background, body{  
background:#B38956 }
```

If only the background color should be changed can be used:

```
.background{ background-color:#B38956 }
```

This example shows the color as background, it is applied via the CSS property "background".

To optimize and compress your CSS code, you can use our [online CSS compressor and optimizer](#) based on csstidy. If you want to create a linear or radial gradient as background or border, check our [CSS Gradient Generator](#).

Hey! You found this booklet interesting? Support Converting Colors with the new Membership Option!

The pro membership hides all ads, plus gives you double the colors in the color bucket, and more awesome pro features!

[Learn more, Memberships starting at \\$2.50/m!](#)

**Follow me
on Twitter!**

@ConvertingColor