

# Converting Colors

Decimal(11766392)

Have a look what the booklet for  
Decimal(11766392) contains.

<b>Decimal(11766392)</b> .....	3
<b><i>Conversions</i></b> .....	4
<b><i>Details</i></b> .....	6
<b><i>Harmonies</i></b> .....	11
<b><i>Previews</i></b> .....	23
<b><i>Color Blindness Simulation</i></b> .....	26
<b><i>CSS Examples</i></b> .....	29

**Color**

**Decimal(11766392)**

# Conversions

## Conversions Part 1

<b>Format</b>	<b>Color</b>
Hex	B38A78
RGB	179, 138, 120
RGB Percent	70%, 54%, 47%
CMY	0.2980, 0.4588, 0.5294
CMYK	0.00, 0.23, 0.33, 0.30
HSL	18°, 28%, 59%
HSV	18°, 33%, 70%
XYZ	31.0690, 29.1167, 21.7519
YIQ	148.2070, 30.2140, 3.0940

# Conversions

## Conversions Part 2

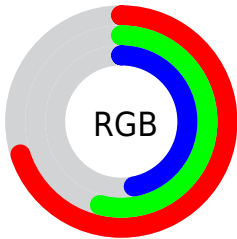
<b>Format</b>	<b>Color</b>
<b>R<sub>YB</sub></b>	179, 146, 120
Decimal	11766392
CIE <sub>Lab</sub>	60.88, 13.03, 15.64
CIE <sub>LCh</sub>	61, 20.359, 50.206
Yxy	29.1167, 0.3792, 0.3554
Android (android.graphics.Color)	4289956472 (0xFFB38A78)
YUV	148.2070, -13.9061, 27.0055
Hunter-Lab	53.9599, 8.3469, 13.8715

# Details

The Decimal color **11766392** is a dark color, and the websafe version is hex **CC9999**. A complement of this color would be **7905715**, and the grayscale version is **9737364**.

A 20% lighter version of the original color is **15515820**, and **8214599** is the 20% darker color. If you saturate the color by 10%, you get **11763302**, and if you desaturate by 10%, it is **11769482**.

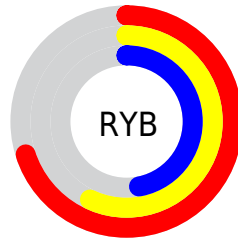
# Distribution



Red (70%)

Green (54%)

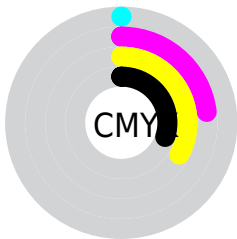
Blue (47%)



Red (70%)

Yellow (57%)

Blue (47%)

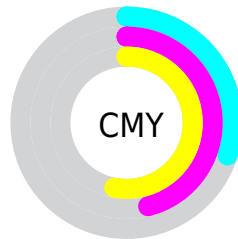


Cyan (0%)

Magenta (23%)

Yellow (33%)

Black (30%)



Cyan (30%)

Magenta (46%)


Yellow (53%)

# Brightness & Saturation Gradients

These gradients show how the Decimal color 11766392 changes by changing the brightness by 10 percent. The first figure shows a shift by +10% for each color and the second figure -10%.

Similar to the brightness gradients but the following saturation gradients show a change of the Decimal color 11766392 by changing the saturation by 10% instead.



 11766392  11766392

16777215  9990495

 15515820  8214599

 16767944  6504753

 16775396  4860444

 3347714

 1835008

 0

 11766392  11766392

 11763302  11769482

11759956

11772828

11756866

11775918

11753520

11779264

11750430

11782353

11747085

11785699

11745024

11788789

11792127

11795199

# Harmonies

## Analogous

The Analogous color harmony consists of three colors that are next to each other on the color wheel.



12093063



11766392



10915952

# Triad

The Triadic color harmony groups three colors that are evenly spaced from another and form a triangle on the color wheel.



11766392



7118220



9343156

# Complementary

The Complementary color scheme is a pair of colors which are on the opposite of each other on the color wheel.



11766392



7905715

# Split Complementary

Split-complementary colors differ from the complementary color scheme. The scheme consists of three colors, the original color and two neighbors of the complement color.



7771830



11766392



6397343

# Square

The Square scheme is like the rectangle color scheme, but the four colors are evenly spaced on the color wheel.



11766392



8362619



6593454



10783402

# Rectangle

The Rectangle color scheme consists of four colors that form a rectangle on the color wheel.



11766392



10130543



6593454



8819382



# Sweetspot

The Sweet Spot groups the original color and five complimentary colors.



11766392



15259857



11761825



7695463



16119285



7697781



# Same Dimension

The Same Dimension uses a secret algorithm to generate beautiful new colors.



11766392



15247499



11773816



5854032



10039040



1705984



# Inverse Universe

The Inverse Universe completely reimagines the original color for something new.



7905715



9161960



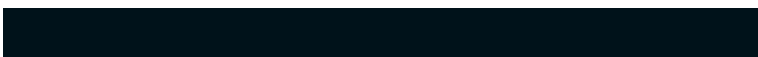
7898291



5265241



27289



4634



# Previews

## White Background



This preview shows how the Decimal color 11766392 looks on a white background.

## Color Contrast Check

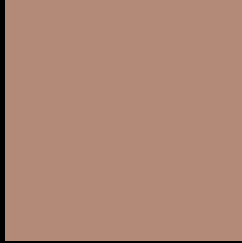
Large Text (above 18pt) WCAG AA ✓ Pass

Any Text WCAG AA × Fail

Large Text (above 18pt) WCAG AAA × Fail

Any Text WCAG AAA × Fail

# Black Background



This preview shows how the Decimal color 11766392 looks on a black background.

## Color Contrast Check

Large Text (above 18pt) WCAG AA ✓ Pass

Any Text WCAG AA ✓ Pass

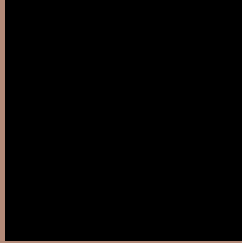
Large Text (above 18pt) WCAG AAA ✓ Pass

Any Text WCAG AAA × Fail

If you want to check with other color combinations, try the [Color Contrast Checker](#).



## Decimal 11766392 Background



This preview shows how black text looks on a background with the Decimal color 11766392.



This preview shows how white text looks on a background with the Decimal color 11766392.

# Color Blindness Simulation

Color vision deficiency is a very complex topic, and I could not describe the different causes any better than Wikipedia does, so if you want to learn more, you should check out their [article about color blindness](#).

## Dichromacy





**Tritanopia**  
11962001

# Trichromacy



**Original Color**  
11766392

**Protanomaly**  
10784891

**Deuteranomaly**  
11439223

**Tritanomaly**  
11896712

# Monochromacy



**Original Color**  
11766392

**Achromatopsia**  
9737364

**Achromatomaly**  
10457226

# CSS Examples

## Text

The CSS property to change the color of the text to Decimal 11766392 is called "color". The color property can be set on classes, ids or directly on the HTML element.

This example shows how text in the color #B38A78 looks like.

```
.text, #text, p{  
  color:#B38A78  
}
```

If you want to add a text shadow in that color use the text-shadow property, you can generate a text shadow directly with our [CSS Text Shadow Generator](#).

Here you see how black text with a 4 pixel #B38A78 colored shadow looks like.

```
.shadow{ text-shadow: 4px 4px 2px #B38A78  
}
```

## Border

The CSS property to change the border of an element to Decimal 11766392 is called "border". The border property can be set on classes, ids or directly on the HTML element.

This example shows the color as border, it can be applied via the CSS property "border" or "border-color".

```
.border, #border, table{ border:4px solid  
#B38A78 }
```

If only the border color should be changed use the property `border-color`.

```
.border{ border-color:#B38A78 }
```

If you want to add a box shadow in that color use:

Here you see how a box with a 4 pixel #B38A78 colored shadow looks like.

```
.boxshadow{ -moz-box-shadow:4px 4px 4px  
4px #B38A78; -webkit-box-shadow:4px 4px  
4px 4px #B38A78; box-shadow:4px 4px 4px  
4px #B38A78 }
```

# Background

The CSS property to change the background color of an element to Decimal 11766392 is called "background". The background property can be set on classes, ids or directly on the HTML element.

```
.background, #background, body{  
background:#B38A78 }
```

If only the background color should be changed can be used:

```
.background{ background-color:#B38A78 }
```

This example shows the color as background, it is applied via the CSS property "background".

To optimize and compress your CSS code, you can use our [online CSS compressor and optimizer](#) based on csstidy. If you want to create a linear or radial gradient as background or border, check our [CSS Gradient Generator](#).



Hey! You found this booklet interesting? Support Converting Colors with the new Membership Option!

The pro membership hides all ads, plus gives you double the colors in the color bucket, and more awesome pro features!

**[Learn more, Memberships starting at \\$2.50/m!](#)**

**Follow me  
on Twitter!**

@ConvertingColor