

# Converting Colors

Decimal(11766414)

Have a look what the booklet for  
Decimal(11766414) contains.

<b>Decimal(11766414)</b> .....	3
<i><b>Conversions</b></i> .....	4
<i><b>Details</b></i> .....	6
<i><b>Harmonies</b></i> .....	11
<i><b>Previews</b></i> .....	23
<i><b>Color Blindness Simulation</b></i> .....	26
<i><b>CSS Examples</b></i> .....	29

# **Color**

**Decimal(11766414)**

# Conversions

## Conversions Part 1

Format	Color
Hex	B38A8E
RGB	179, 138, 142
RGB Percent	70%, 54%, 56%
CMY	0.2980, 0.4588, 0.4431
CMYK	0.00, 0.23, 0.21, 0.30
HSL	354°, 21%, 62%
HSV	354°, 23%, 70%
XYZ	32.5614, 29.7137, 29.6103
YIQ	150.7150, 23.1520, 9.9360

# Conversions

## Conversions Part 2

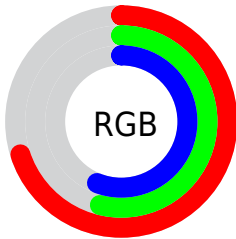
<b>Format</b>	<b>Color</b>
<b>R<sub>YB</sub></b>	179, 138, 142
Decimal	11766414
CIE <sub>Lab</sub>	61.41, 16.21, 3.88
CIE <sub>LCh</sub>	61, 16.668, 13.472
Yxy	29.7137, 0.3544, 0.3234
Android (android.graphics.Color)	4289956494 (0xFFB38A8E)
YUV	150.7150, -4.2965, 24.8059
Hunter-Lab	54.5102, 11.2330, 5.9504

# Details

The Decimal color **11766414** is a light color, and the websafe version is hex **CC9999**. A complement of this color would be **9089967**, and the grayscale version is **9934743**.

A 20% lighter version of the original color is **15450308**, and **8280156** is the 20% darker color. If you saturate the color by 10%, you get **11761790**, and if you desaturate by 10%, it is **11771038**.

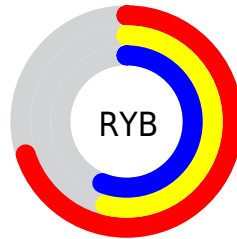
# Distribution



Red (70%)

Green (54%)

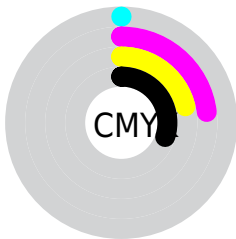
Blue (56%)



Red (70%)

Yellow (54%)

Blue (56%)

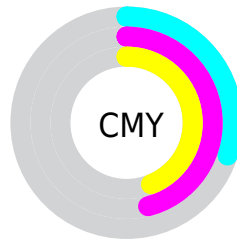


Cyan (0%)

Magenta (23%)

Yellow (21%)

Black (30%)



Cyan (30%)

Magenta (46%)

Yellow (44%)

# Brightness & Saturation Gradients

These gradients show how the Decimal color 11766414 changes by changing the brightness by 10 percent. The first figure shows a shift by +10% for each color and the second figure -10%.

Similar to the brightness gradients but the following saturation gradients show a change of the Decimal color 11766414 by changing the saturation by 10% instead.



 11766414       11766414

16777215       9990260

 15450308       8280156


 16768224       6570052


 16775420       4925998

 3413274

 2162688

 0

 11766414       11766414

 11761790       11771038

 11757166

 11775662

 11752542

 11780286

 11747917

 11784911

 11743549

 11789279

 11738925

 11793903

 11734301

 11796479

 11730961

# Harmonies

## Analogous

The Analogous color harmony consists of three colors that are next to each other on the color wheel.



11373469



11766414



11635841

# Triad

The Triadic color harmony groups three colors that are evenly spaced from another and form a triangle on the color wheel.



11766414



8952447



8034480

# Complementary

The Complementary color scheme is a pair of colors which are on the opposite of each other on the color wheel.



11766414



9089967

# Split Complementary

Split-complementary colors differ from the complementary color scheme. The scheme consists of three colors, the original color and two neighbors of the complement color.



7248808



11766414



7904395

# Square

The Square scheme is like the rectangle color scheme, but the four colors are evenly spaced on the color wheel.



11766414



10065272



7249307



9212849

# Rectangle

The Rectangle color scheme consists of four colors that form a rectangle on the color wheel.



11766414



11243386



7249307



7707054



# Sweetspot

The Sweet Spot groups the original color and five complimentary colors.



11766414



15259865



11504307



7695469



16119285



7697781



# Same Dimension

The Same Dimension uses a secret algorithm to generate beautiful new colors.



11766414



15247792



11770506



5853265



10027023



1703938



# Inverse Universe

The Inverse Universe completely reimagines the original color for something new.



11766414



15247792



9085875



5853265



10027023

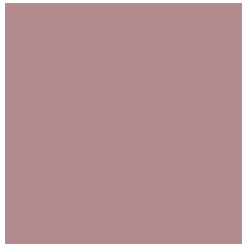


1703938



# Previews

## White Background



This preview shows how the Decimal color 11766414 looks on a white background.

## Color Contrast Check

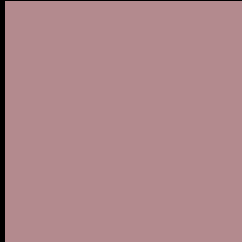
Large Text (above 18pt) WCAG AA ✓ Pass

Any Text WCAG AA × Fail

Large Text (above 18pt) WCAG AAA × Fail

Any Text WCAG AAA × Fail

# Black Background



This preview shows how the Decimal color 11766414 looks on a black background.

## Color Contrast Check

Large Text (above 18pt) WCAG AA ✓ Pass

Any Text WCAG AA ✓ Pass

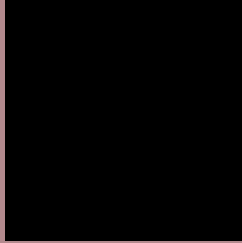
Large Text (above 18pt) WCAG AAA ✓ Pass

Any Text WCAG AAA × Fail

If you want to check with other color combinations, try the [Color Contrast Checker](#).



## Decimal 11766414 Background



This preview shows how black text looks on a background with the Decimal color 11766414.



This preview shows how white text looks on a background with the Decimal color 11766414.

# Color Blindness Simulation

Color vision deficiency is a very complex topic, and I could not describe the different causes any better than Wikipedia does, so if you want to learn more, you should check out their [article about color blindness](#).


## Dichromacy



**Original Color**  
11766414

**Protanopia**  
9933971

**Deuteranopia**  
10915725



**Tritanopia**  
11831700

# Trichromacy



**Original Color**  
11766414

**Protanomaly**  
10588305

**Deuteranomaly**  
11242893

**Tritanomaly**  
11831698

# Monochromacy



**Original Color**  
11766414

**Achromatopsia**  
9934743

**Achromatomaly**  
10588820

# CSS Examples

## Text

The CSS property to change the color of the text to Decimal 11766414 is called "color". The color property can be set on classes, ids or directly on the HTML element.

This example shows how text in the color #B38A8E looks like.

```
.text, #text, p{  
    color:#B38A8E  
}
```

If you want to add a text shadow in that color use the text-shadow property, you can generate a text shadow directly with our [CSS Text Shadow Generator](#).

Here you see how black text with a 4 pixel #B38A8E colored shadow looks like.

```
.shadow{ text-shadow: 4px 4px 2px #B38A8E
}
```

## Border

The CSS property to change the border of an element to Decimal 11766414 is called "border". The border property can be set on classes, ids or directly on the HTML element.

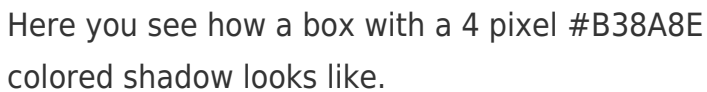
This example shows the color as border, it can be applied via the CSS property "border" or "border-color".

```
.border, #border, table{ border:4px solid
#B38A8E }
```

If only the border color should be changed use the property `border-color`.

```
.border{ border-color:#B38A8E }
```

If you want to add a box shadow in that color use:



Here you see how a box with a 4 pixel #B38A8E colored shadow looks like.

```
.boxshadow{ -moz-box-shadow:4px 4px 4px  
4px #B38A8E; -webkit-box-shadow:4px 4px  
4px 4px #B38A8E; box-shadow:4px 4px 4px  
4px #B38A8E }
```

# Background

The CSS property to change the background color of an element to Decimal 11766414 is called "background". The background property can be set on classes, ids or directly on the HTML element.

```
.background, #background, body{  
background:#B38A8E }
```

If only the background color should be changed can be used:

```
.background{ background-color:#B38A8E }
```

This example shows the color as background, it is applied via the CSS property "background".

To optimize and compress your CSS code, you can use our [online CSS compressor and optimizer](#) based on csstidy. If you want to create a linear or radial gradient as background or border, check our [CSS Gradient Generator](#).



Hey! You found this booklet interesting? Support Converting Colors with the new Membership Option!

The pro membership hides all ads, plus gives you double the colors in the color bucket, and more awesome pro features!

**[Learn more, Memberships starting at \\$2.50/m!](#)**

**Follow me  
on Twitter!**

@ConvertingColor