

Converting Colors

Decimal(11767170)

Have a look what the booklet for
Decimal(11767170) contains.

Decimal(11767170)	3
<i>Conversions</i>	4
<i>Details</i>	6
<i>Harmonies</i>	11
<i>Previews</i>	23
<i>Color Blindness Simulation</i>	26
<i>CSS Examples</i>	29

Color

Decimal(11767170)

Conversions

Conversions Part 1

Format	Color
Hex	B38D82
RGB	179, 141, 130
RGB Percent	70%, 55%, 51%
CMY	0.2980, 0.4471, 0.4902
CMYK	0.00, 0.21, 0.27, 0.30
HSL	13°, 24%, 61%
HSV	13°, 27%, 70%
XYZ	32.1445, 30.2452, 25.2628
YIQ	151.1080, 26.1790, 4.6350

Conversions

Conversions Part 2

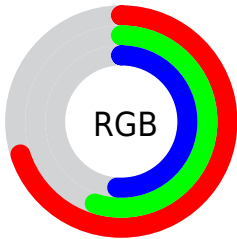
Format	Color
RYB	179, 144, 130
Decimal	11767170
CIELab	61.87, 12.73, 11.35
CIElCh	62, 17.060, 41.725
Yxy	30.2452, 0.3667, 0.3451
Android (android.graphics.Color)	4289957250 (0xFFB38D82)
YUV	151.1080, -10.4062, 24.4613
Hunter-Lab	54.9956, 8.0897, 11.2615

Details

The Decimal color **11767170** is a light color, and the websafe version is hex **CC9999**. A complement of this color would be **8562867**, and the grayscale version is **9934743**.

A 20% lighter version of the original color is **15451063**, and **8215377** is the 20% darker color. If you saturate the color by 10%, you get **11763568**, and if you desaturate by 10%, it is **11770772**.

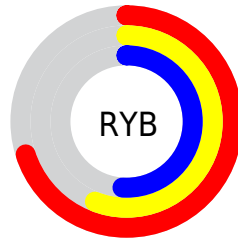
Distribution



Red (70%)

Green (55%)

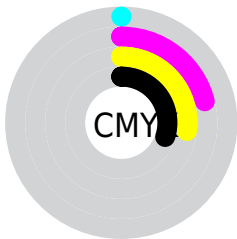
Blue (51%)



Red (70%)

Yellow (56%)

Blue (51%)

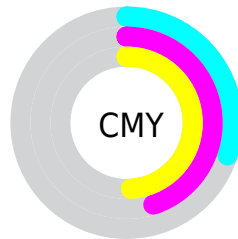


Cyan (0%)

Magenta (21%)

Yellow (27%)

Black (30%)



Cyan (30%)

Magenta (45%)


Yellow (49%)

Brightness & Saturation Gradients

These gradients show how the Decimal color 11767170 changes by changing the brightness by 10 percent. The first figure shows a shift by +10% for each color and the second figure -10%.

Similar to the brightness gradients but the following saturation gradients show a change of the Decimal color 11767170 by changing the saturation by 10% instead.

 11767170

 11767170

16777215

 9991017

 15451063

 8215377

 16768979

 6570810

 16776175

 4926756

 3348495

 1966080

 0

 11767170

 11767170

 11763568

 11770772

 11759966

 11774374

 11756364

 11777976

 11752762

 11781578

 11749417

 11784923

 11745815

 11788525

 11742213

 11792127

 11741184

 11795711

 11796479

Harmonies

Analogous

The Analogous color harmony consists of three colors that are next to each other on the color wheel.



11897744



11767170



11178361

Triad

The Triadic color harmony groups three colors that are evenly spaced from another and form a triangle on the color wheel.



11767170



7970188



9213363

Complementary

The Complementary color scheme is a pair of colors which are on the opposite of each other on the color wheel.



11767170



8562867

Split Complementary

Split-complementary colors differ from the complementary color scheme. The scheme consists of three colors, the original color and two neighbors of the complement color.



7969458



11767170



7249563

Square

The Square scheme is like the rectangle color scheme, but the four colors are evenly spaced on the color wheel.



11767170



9083775



7249321



10457260

Rectangle

The Rectangle color scheme consists of four colors that form a rectangle on the color wheel.



11767170



10524023



7249321



8754867

Sweetspot

The Sweet Spot groups the original color and five complimentary colors.



11767170



15260373



11764392



7695466



16119285



7697781

Same Dimension

The Same Dimension uses a secret algorithm to generate beautiful new colors.



11767170



15248795



11773314



5853776



10035712



1705472

Inverse Universe

The Inverse Universe completely reimagines the original color for something new.



8562867



10213352



8556723



5265241



30617



5146

Previews

White Background



This preview shows how the Decimal color 11767170 looks on a white background.

Color Contrast Check

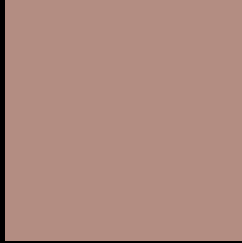
Large Text (above 18pt) WCAG AA × Fail

Any Text WCAG AA × Fail

Large Text (above 18pt) WCAG AAA × Fail

Any Text WCAG AAA × Fail

Black Background



This preview shows how the Decimal color 11767170 looks on a black background.

Color Contrast Check

Large Text (above 18pt) WCAG AA ✓ Pass

Any Text WCAG AA ✓ Pass

Large Text (above 18pt) WCAG AAA ✓ Pass

Any Text WCAG AAA ✓ Pass

If you want to check with other color combinations, try the [Color Contrast Checker](#).

Decimal 11767170 Background



This preview shows how black text looks on a background with the Decimal color 11767170.



This preview shows how white text looks on a background with the Decimal color 11767170.

Color Blindness Simulation

Color vision deficiency is a very complex topic, and I could not describe the different causes any better than Wikipedia does, so if you want to learn more, you should check out their [article about color blindness](#).


Dichromacy



Original Color
11767170

Protanopia
10261894

Deuteranopia
11243649



Tritanopia
11897493

Trichromacy



Original Color
11767170

Protanomaly
10785413

Deuteranomaly
11440001

Tritanomaly
11832206

Monochromacy



Original Color
11767170

Achromatopsia
9934743

Achromatomaly
10589071

CSS Examples

Text

The CSS property to change the color of the text to Decimal 11767170 is called "color". The color property can be set on classes, ids or directly on the HTML element.

This example shows how text in the color #B38D82 looks like.

```
.text, #text, p{  
    color:#B38D82  
}
```

If you want to add a text shadow in that color use the text-shadow property, you can generate a text shadow directly with our [CSS Text Shadow Generator](#).

Here you see how black text with a 4 pixel #B38D82 colored shadow looks like.

```
.shadow{ text-shadow: 4px 4px 2px #B38D82
}
```

Border

The CSS property to change the border of an element to Decimal 11767170 is called "border". The border property can be set on classes, ids or directly on the HTML element.

This example shows the color as border, it can be applied via the CSS property "border" or "border-color".

```
.border, #border, table{ border:4px solid
#B38D82 }
```

If only the border color should be changed use the property `border-color`.

```
.border{ border-color:#B38D82 }
```

If you want to add a box shadow in that color use:

Here you see how a box with a 4 pixel #B38D82 colored shadow looks like.

```
.boxshadow{ -moz-box-shadow:4px 4px 4px  
4px #B38D82; -webkit-box-shadow:4px 4px  
4px 4px #B38D82; box-shadow:4px 4px 4px  
4px #B38D82 }
```

Background

The CSS property to change the background color of an element to Decimal 11767170 is called "background". The background property can be set on classes, ids or directly on the HTML element.

```
.background, #background, body{  
background:#B38D82 }
```

If only the background color should be changed can be used:

```
.background{ background-color:#B38D82 }
```

This example shows the color as background, it is applied via the CSS property "background".

To optimize and compress your CSS code, you can use our [online CSS compressor and optimizer](#) based on csstidy. If you want to create a linear or radial gradient as background or border, check our [CSS Gradient Generator](#).

Hey! You found this booklet interesting? Support Converting Colors with the new Membership Option!

The pro membership hides all ads, plus gives you double the colors in the color bucket, and more awesome pro features!

[Learn more, Memberships starting at \\$2.50/m!](#)

**Follow me
on Twitter!**

@ConvertingColor