

# Converting Colors

Decimal(11768211)

Have a look what the booklet for  
Decimal(11768211) contains.

<b>Decimal(11768211)</b> .....	3
<i><b>Conversions</b></i> .....	4
<i><b>Details</b></i> .....	6
<i><b>Harmonies</b></i> .....	11
<i><b>Previews</b></i> .....	23
<i><b>Color Blindness Simulation</b></i> .....	26
<i><b>CSS Examples</b></i> .....	29

# **Color**

**Decimal(11768211)**

# Conversions

## Conversions Part 1

Format	Color
Hex	B39193
RGB	179, 145, 147
RGB Percent	70%, 57%, 58%
CMY	0.2980, 0.4314, 0.4235
CMYK	0.00, 0.19, 0.18, 0.30
HSL	356°, 18%, 64%
HSV	356°, 19%, 70%
XYZ	33.9823, 31.9411, 31.9779
YIQ	155.3940, 19.6220, 7.8300

# Conversions

## Conversions Part 2

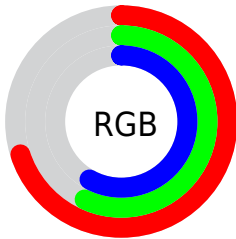
<b>Format</b>	<b>Color</b>
<a href="#">RYB</a>	<a href="#">179, 145, 147</a>
Decimal	<a href="#">11768211</a>
CIELab	<a href="#">63.29, 13.09, 3.77</a>
CIELCh	<a href="#">63, 13.622, 16.079</a>
Yxy	<a href="#">31.9411, 0.3471, 0.3263</a>
Android (android.graphics.Color)	<a href="#">4289958291 (0xFFB39193)</a>
YUV	<a href="#">155.3940, -4.1382, 20.7025</a>
Hunter-Lab	<a href="#">56.5164, 8.4249, 6.0142</a>

# Details

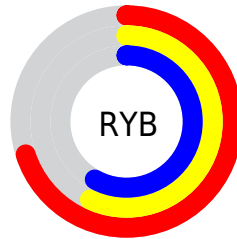
The Decimal color **11768211** is a light color, and the websafe version is hex **CC9999**. A complement of this color would be **9548721**, and the grayscale version is **10197915**.

A 20% lighter version of the original color is **15452105**, and **8281697** is the 20% darker color. If you saturate the color by 10%, you get **11763586**, and if you desaturate by 10%, it is **11772836**.

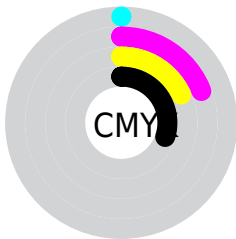
# Distribution



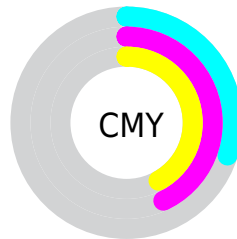
- Red (70%)
- Green (57%)
- Blue (58%)



- Red (70%)
- Yellow (57%)
- Blue (58%)



- Cyan (0%)
- Magenta (19%)
- Yellow (18%)
- Black (30%)



- Cyan (30%)
- Magenta (43%)
- Yellow (42%)

# Brightness & Saturation Gradients

These gradients show how the Decimal color 11768211 changes by changing the brightness by 10 percent. The first figure shows a shift by +10% for each color and the second figure -10%.

Similar to the brightness gradients but the following saturation gradients show a change of the Decimal color 11768211 by changing the saturation by 10% instead.





11768211



11768211

16777215



9992057



15452105



8281697



16770021



6571849



4993074



3480349



2162947



0



11768211




11768211



11763586



11772836

 11758961

 11777461

 11754336

 11782086

 11749712

 11786710

 11745087

 11791335

 11740718

 11795704

 11736093

 11796479

 11731468

 11730955

# Harmonies

## Analogous

The Analogous color harmony consists of three colors that are next to each other on the color wheel.



11440543



11768211



11637640

# Triad

The Triadic color harmony groups three colors that are evenly spaced from another and form a triangle on the color wheel.



11768211



9346696



8756400

# Complementary

The Complementary color scheme is a pair of colors which are on the opposite of each other on the color wheel.



11768211



9548721

# Split Complementary

Split-complementary colors differ from the complementary color scheme. The scheme consists of three colors, the original color and two neighbors of the complement color.



8167338



11768211



8560787

# Square

The Square scheme is like the rectangle color scheme, but the four colors are evenly spaced on the color wheel.



11768211



10263170



8036511



9738416

# Rectangle

The Rectangle color scheme consists of four colors that form a rectangle on the color wheel.



11768211



11310467



8036511



8494511



# Sweetspot

The Sweet Spot groups the original color and five complimentary colors.



11768211



15260379



11637171



7695726



16119285



7697781



# Same Dimension

The Same Dimension uses a secret algorithm to generate beautiful new colors.



11768211



15250358



11772049



5853265



10027017



1703937



# Inverse Universe

The Inverse Universe completely reimagines the original color for something new.



11768211



15250358



9544883



5853265



10027017



1703937



# Previews

## White Background



This preview shows how the Decimal color 11768211 looks on a white background.

## Color Contrast Check

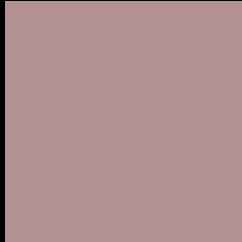
Large Text (above 18pt) WCAG AA × Fail

Any Text WCAG AA × Fail

Large Text (above 18pt) WCAG AAA × Fail

Any Text WCAG AAA × Fail

# Black Background



This preview shows how the Decimal color 11768211 looks on a black background.

## Color Contrast Check

Large Text (above 18pt) WCAG AA ✓ Pass

Any Text WCAG AA ✓ Pass

Large Text (above 18pt) WCAG AAA ✓ Pass

Any Text WCAG AAA ✓ Pass

If you want to check with other color combinations, try the [Color Contrast Checker](#).



## Decimal 11768211 Background



This preview shows how black text looks on a background with the Decimal color 11768211.



This preview shows how white text looks on a background with the Decimal color 11768211.

# Color Blindness Simulation

Color vision deficiency is a very complex topic, and I could not describe the different causes any better than Wikipedia does, so if you want to learn more, you should check out their [article about color blindness](#).


## Dichromacy



**Original Color**  
11768211

**Protanopia**  
10328471

**Deuteranopia**  
11244690



**Tritanopia**  
11833499

# Trichromacy



**Original Color**  
11768211

**Protanomaly**  
10851990

**Deuteranomaly**  
11441042

**Tritanomaly**  
11833496

# Monochromacy



**Original Color**  
11768211

**Achromatopsia**  
10197915

**Achromatomaly**  
10786712

# CSS Examples

## Text

The CSS property to change the color of the text to Decimal 11768211 is called "color". The color property can be set on classes, ids or directly on the HTML element.

This example shows how text in the color #B39193 looks like.

```
.text, #text, p{  
    color:#B39193  
}
```

If you want to add a text shadow in that color use the text-shadow property, you can generate a text shadow directly with our [CSS Text Shadow Generator](#).

Here you see how black text with a 4 pixel #B39193 colored shadow looks like.

```
.shadow{ text-shadow: 4px 4px 2px #B39193
}
```

## Border

The CSS property to change the border of an element to Decimal 11768211 is called "border". The border property can be set on classes, ids or directly on the HTML element.

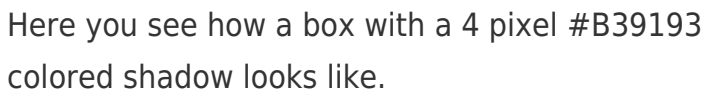
This example shows the color as border, it can be applied via the CSS property "border" or "border-color".

```
.border, #border, table{ border:4px solid
#B39193 }
```

If only the border color should be changed use the property `border-color`.

```
.border{ border-color:#B39193 }
```

If you want to add a box shadow in that color use:



Here you see how a box with a 4 pixel #B39193 colored shadow looks like.

```
.boxshadow{ -moz-box-shadow:4px 4px 4px  
4px #B39193; -webkit-box-shadow:4px 4px  
4px 4px #B39193; box-shadow:4px 4px 4px  
4px #B39193 }
```

# Background

The CSS property to change the background color of an element to Decimal 11768211 is called "background". The background property can be set on classes, ids or directly on the HTML element.

```
.background, #background, body{  
background:#B39193 }
```

If only the background color should be changed can be used:

```
.background{ background-color:#B39193 }
```

This example shows the color as background, it is applied via the CSS property "background".

To optimize and compress your CSS code, you can use our [online CSS compressor and optimizer](#) based on csstidy. If you want to create a linear or radial gradient as background or border, check our [CSS Gradient Generator](#).



Hey! You found this booklet interesting? Support Converting Colors with the new Membership Option!

The pro membership hides all ads, plus gives you double the colors in the color bucket, and more awesome pro features!

**[Learn more, Memberships starting at \\$2.50/m!](#)**

**Follow me  
on Twitter!**

@ConvertingColor