

# Converting Colors

Decimal(11768703)

Have a look what the booklet for  
Decimal(11768703) contains.

<b>Decimal(11768703)</b> .....	3
<i><b>Conversions</b></i> .....	4
<i><b>Details</b></i> .....	6
<i><b>Harmonies</b></i> .....	11
<i><b>Previews</b></i> .....	23
<i><b>Color Blindness Simulation</b></i> .....	26
<i><b>CSS Examples</b></i> .....	29

# **Color**

**Decimal(11768703)**

# Conversions

## Conversions Part 1

Format	Color
Hex	B3937F
RGB	179, 147, 127
RGB Percent	70%, 58%, 50%
CMY	0.2980, 0.4235, 0.5020
CMYK	0.00, 0.18, 0.29, 0.30
HSL	23°, 25%, 60%
HSV	23°, 29%, 70%
XYZ	32.8549, 31.9834, 24.5205
YIQ	154.2880, 25.4920, 0.5640

# Conversions

## Conversions Part 2

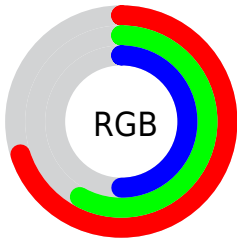
<b>Format</b>	<b>Color</b>
<b>RYB</b>	179, 160, 127
Decimal	11768703
CIELab	63.33, 8.97, 15.09
CIELCh	63, 17.558, 59.280
Yxy	31.9834, 0.3677, 0.3579
Android (android.graphics.Color)	4289958783 (0xFFB3937F)
YUV	154.2880, -13.4530, 21.6724
Hunter-Lab	56.5539, 4.7299, 13.8810

# Details

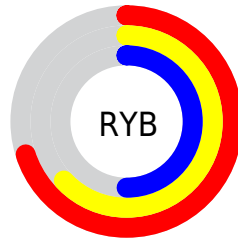
The Decimal color **11768703** is a light color, and the websafe version is hex **CC9999**. A complement of this color would be **8363955**, and the grayscale version is **10132122**.

A 20% lighter version of the original color is **15452596**, and **8216654** is the 20% darker color. If you saturate the color by 10%, you get **11765869**, and if you desaturate by 10%, it is **11771537**.

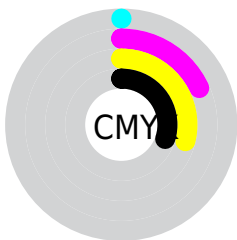
# Distribution



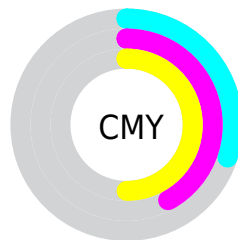
- Red (70%)
- Green (58%)
- Blue (50%)



- Red (70%)
- Yellow (63%)
- Blue (50%)



- Cyan (0%)
- Magenta (18%)
- Yellow (29%)
- Black (30%)




- Cyan (30%)
- Magenta (42%)
- Yellow (50%)

# Brightness & Saturation Gradients

These gradients show how the Decimal color 11768703 changes by changing the brightness by 10 percent. The first figure shows a shift by +10% for each color and the second figure -10%.

Similar to the brightness gradients but the following saturation gradients show a change of the Decimal color 11768703 by changing the saturation by 10% instead.



 11768703

 11768703

16777215

 9992550

 15452596

 8216654

 16770511

 6572343


 16777196

 4928033

 3349772

 1967360


 0

 11768703

 11768703

 11765869

 11771537

 11763035

 11774371

 11760201

 11777205

 11757367

 11780039

 11754534

 11782873

 11751700

 11785706

 11748866

 11788540

 11748608

 11791359

 11794175

# Harmonies

## Analogous

The Analogous color harmony consists of three colors that are next to each other on the color wheel.



12226443



11768703



10918010

# Triad

The Triadic color harmony groups three colors that are evenly spaced from another and form a triangle on the color wheel.



11768703



7709336



10261940

# Complementary

The Complementary color scheme is a pair of colors which are on the opposite of each other on the color wheel.



11768703



8363955

# Split Complementary

Split-complementary colors differ from the complementary color scheme. The scheme consists of three colors, the original color and two neighbors of the complement color.



8887224



11768703



7316136

# Square

The Square scheme is like the rectangle color scheme, but the four colors are evenly spaced on the color wheel.



11768703



8626569



7774132



11375018

# Rectangle

The Rectangle color scheme consists of four colors that form a rectangle on the color wheel.



11768703



10197884



7774132



9803703



# Sweetspot

The Sweet Spot groups the original color and five complimentary colors.



11768703



15260627



11763615



7695720



16119285



7697781



# Same Dimension

The Same Dimension uses a secret algorithm to generate beautiful new colors.



11768703



15251095



11775359



5854288



10042112



1706496



# Inverse Universe

The Inverse Universe completely reimagines the original color for something new.



8363955



9947624



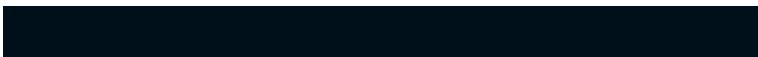
8357299



5264985



24217



4122



# Previews

## White Background



This preview shows how the Decimal color 11768703 looks on a white background.

## Color Contrast Check

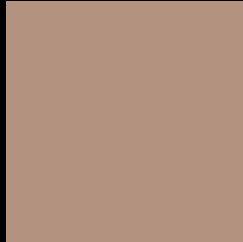
Large Text (above 18pt) WCAG AA × Fail

Any Text WCAG AA × Fail

Large Text (above 18pt) WCAG AAA × Fail

Any Text WCAG AAA × Fail

# Black Background



This preview shows how the Decimal color 11768703 looks on a black background.

## Color Contrast Check

Large Text (above 18pt) WCAG AA ✓ Pass

Any Text WCAG AA ✓ Pass

Large Text (above 18pt) WCAG AAA ✓ Pass

Any Text WCAG AAA ✓ Pass

If you want to check with other color combinations, try the [Color Contrast Checker](#).



## Decimal 11768703 Background



This preview shows how black text looks on a background with the Decimal color 11768703.



This preview shows how white text looks on a background with the Decimal color 11768703.

# Color Blindness Simulation

Color vision deficiency is a very complex topic, and I could not describe the different causes any better than Wikipedia does, so if you want to learn more, you should check out their [article about color blindness](#).


## Dichromacy



**Original Color**  
11768703

**Protanopia**  
10656130

**Deuteranopia**  
11703423



**Tritanopia**  
11964314

# Trichromacy



**Original Color**  
11768703

**Protanomaly**  
11048833

**Deuteranomaly**  
11703423

**Tritanomaly**  
11899024

# Monochromacy



**Original Color**  
11768703

**Achromatopsia**  
10132122

**Achromatomaly**  
10721168

# CSS Examples

## Text

The CSS property to change the color of the text to Decimal 11768703 is called "color". The color property can be set on classes, ids or directly on the HTML element.

This example shows how text in the color #B3937F looks like.

```
.text, #text, p{  
    color:#B3937F  
}
```

If you want to add a text shadow in that color use the text-shadow property, you can generate a text shadow directly with our [CSS Text Shadow Generator](#).

Here you see how black text with a 4 pixel #B3937F colored shadow looks like.

```
.shadow{ text-shadow: 4px 4px 2px #B3937F
}
```

## Border

The CSS property to change the border of an element to Decimal 11768703 is called "border". The border property can be set on classes, ids or directly on the HTML element.

This example shows the color as border, it can be applied via the CSS property "border" or "border-color".

```
.border, #border, table{ border:4px solid
#B3937F }
```

If only the border color should be changed use the property `border-color`.

```
.border{ border-color:#B3937F }
```

If you want to add a box shadow in that color use:

Here you see how a box with a 4 pixel #B3937F colored shadow looks like.

```
.boxshadow{ -moz-box-shadow:4px 4px 4px  
4px #B3937F; -webkit-box-shadow:4px 4px  
4px 4px #B3937F; box-shadow:4px 4px 4px  
4px #B3937F }
```

# Background

The CSS property to change the background color of an element to Decimal 11768703 is called "background". The background property can be set on classes, ids or directly on the HTML element.

```
.background, #background, body{  
background:#B3937F }
```

If only the background color should be changed can be used:

```
.background{ background-color:#B3937F }
```

This example shows the color as background, it is applied via the CSS property "background".

To optimize and compress your CSS code, you can use our [online CSS compressor and optimizer](#) based on csstidy. If you want to create a linear or radial gradient as background or border, check our [CSS Gradient Generator](#).



Hey! You found this booklet interesting? Support Converting Colors with the new Membership Option!

The pro membership hides all ads, plus gives you double the colors in the color bucket, and more awesome pro features!

**[Learn more, Memberships starting at \\$2.50/m!](#)**

**Follow me  
on Twitter!**

@ConvertingColor