

# Converting Colors

Decimal(11768965)

Have a look what the booklet for  
Decimal(11768965) contains.

<b>Decimal(11768965)</b> .....	3
<i><b>Conversions</b></i> .....	4
<i><b>Details</b></i> .....	6
<i><b>Harmonies</b></i> .....	11
<i><b>Previews</b></i> .....	23
<i><b>Color Blindness Simulation</b></i> .....	26
<i><b>CSS Examples</b></i> .....	29

# **Color**

**Decimal(11768965)**

# Conversions

## Conversions Part 1

<b>Format</b>	<b>Color</b>
Hex	B39485
RGB	179, 148, 133
RGB Percent	70%, 58%, 52%
CMY	0.2980, 0.4196, 0.4784
CMYK	0.00, 0.17, 0.26, 0.30
HSL	20°, 23%, 61%
HSV	20°, 26%, 70%
XYZ	33.4139, 32.4570, 26.6940
YIQ	155.5590, 23.2910, 1.9070

# Conversions

## Conversions Part 2

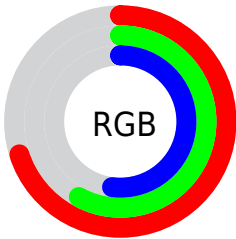
<b>Format</b>	<b>Color</b>
<b>RYB</b>	179, 155, 133
Decimal	11768965
CIELab	63.72, 9.27, 12.27
CIELCh	64, 15.379, 52.935
Yxy	32.4570, 0.3610, 0.3506
Android (android.graphics.Color)	4289959045 (0xFFB39485)
YUV	155.5590, -11.1216, 20.5578
Hunter-Lab	56.9710, 4.9924, 12.0991

# Details

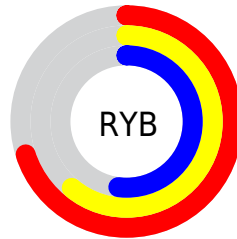
The Decimal color **11768965** is a light color, and the websafe version is hex **CC9999**. A complement of this color would be **8758451**, and the grayscale version is **10263708**.

A 20% lighter version of the original color is **15452858**, and **8282451** is the 20% darker color. If you saturate the color by 10%, you get **11765875**, and if you desaturate by 10%, it is **11772055**.

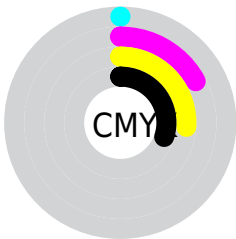
# Distribution



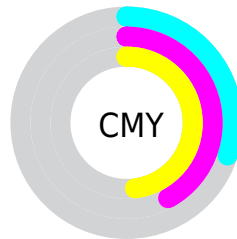
- Red (70%)
- Green (58%)
- Blue (52%)



- Red (70%)
- Yellow (61%)
- Blue (52%)



- Cyan (0%)
- Magenta (17%)
- Yellow (26%)
- Black (30%)



- Cyan (30%)
- Magenta (42%)
- Yellow (48%)

# Brightness & Saturation Gradients

These gradients show how the Decimal color 11768965 changes by changing the brightness by 10 percent. The first figure shows a shift by +10% for each color and the second figure -10%.

Similar to the brightness gradients but the following saturation gradients show a change of the Decimal color 11768965 by changing the saturation by 10% instead.





11768965



11768965

16777215



9992812



15452858



8282451



16770774



6572604



16777202



4928295



3415570



2033152



0



11768965




11768965



11765875



11772055

 11762785

 11775145

 11759695

 11778235

 11756605

 11781325

 11753516

 11784415

 11750426

 11787504

 11747336

 11790591

 11745792

 11793919

 11796479

# Harmonies

## Analogous

The Analogous color harmony consists of three colors that are next to each other on the color wheel.



12030352



11768965



11049087

# Triad

The Triadic color harmony groups three colors that are evenly spaced from another and form a triangle on the color wheel.



11768965



8233622



10066099

# Complementary

The Complementary color scheme is a pair of colors which are on the opposite of each other on the color wheel.



11768965



8758451

# Split Complementary

Split-complementary colors differ from the complementary color scheme. The scheme consists of three colors, the original color and two neighbors of the complement color.



8887733



11768965



7774884

# Square

The Square scheme is like the rectangle color scheme, but the four colors are evenly spaced on the color wheel.



11768965



9085065



8036528



11113643

# Rectangle

The Rectangle color scheme consists of four colors that form a rectangle on the color wheel.



11768965



10460032



8036528



9673397



# Sweetspot

The Sweet Spot groups the original color and five complimentary colors.



11768965



15260885



11765156



7695722



16119285



7697781



# Same Dimension

The Same Dimension uses a secret algorithm to generate beautiful new colors.



11768965



15251616



11774853



5854032



10039808



1705984



# Inverse Universe

The Inverse Universe completely reimagines the original color for something new.



8758451



10539496



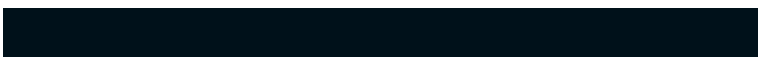
8752563



5264985



26521



4378



# Previews

## White Background



This preview shows how the Decimal color 11768965 looks on a white background.

## Color Contrast Check

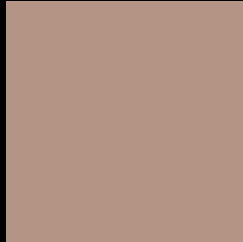
Large Text (above 18pt) WCAG AA × Fail

Any Text WCAG AA × Fail

Large Text (above 18pt) WCAG AAA × Fail

Any Text WCAG AAA × Fail

# Black Background



This preview shows how the Decimal color 11768965 looks on a black background.

## Color Contrast Check

Large Text (above 18pt) WCAG AA ✓ Pass

Any Text WCAG AA ✓ Pass

Large Text (above 18pt) WCAG AAA ✓ Pass

Any Text WCAG AAA ✓ Pass

If you want to check with other color combinations, try the [Color Contrast Checker](#).



## Decimal 11768965 Background



This preview shows how black text looks on a background with the Decimal color 11768965.

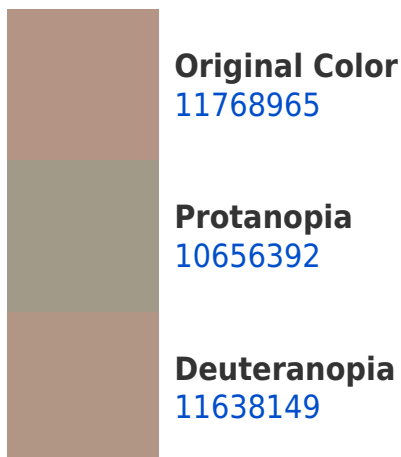



This preview shows how white text looks on a background with the Decimal color 11768965.

# Color Blindness Simulation

Color vision deficiency is a very complex topic, and I could not describe the different causes any better than Wikipedia does, so if you want to learn more, you should check out their [article about color blindness](#).

## Dichromacy





**Tritanopia**  
11964828

# Trichromacy



**Original Color**  
11768965

**Protanomaly**  
11049095

**Deuteranomaly**  
11703685

**Tritanomaly**  
11899540

# Monochromacy



**Original Color**  
11768965

**Achromatopsia**  
10263708

**Achromatomaly**  
10787220

# CSS Examples

## Text

The CSS property to change the color of the text to Decimal 11768965 is called "color". The color property can be set on classes, ids or directly on the HTML element.

This example shows how text in the color #B39485 looks like.

```
.text, #text, p{  
    color:#B39485  
}
```

If you want to add a text shadow in that color use the text-shadow property, you can generate a text shadow directly with our [CSS Text Shadow Generator](#).

Here you see how black text with a 4 pixel #B39485 colored shadow looks like.

```
.shadow{ text-shadow: 4px 4px 2px #B39485
}
```

## Border

The CSS property to change the border of an element to Decimal 11768965 is called "border". The border property can be set on classes, ids or directly on the HTML element.

This example shows the color as border, it can be applied via the CSS property "border" or "border-color".

```
.border, #border, table{ border:4px solid
#B39485 }
```

If only the border color should be changed use the property `border-color`.

```
.border{ border-color:#B39485 }
```

If you want to add a box shadow in that color use:

Here you see how a box with a 4 pixel #B39485 colored shadow looks like.

```
.boxshadow{ -moz-box-shadow:4px 4px 4px  
4px #B39485; -webkit-box-shadow:4px 4px  
4px 4px #B39485; box-shadow:4px 4px 4px  
4px #B39485 }
```

# Background

The CSS property to change the background color of an element to Decimal 11768965 is called "background". The background property can be set on classes, ids or directly on the HTML element.

```
.background, #background, body{  
background:#B39485 }
```

If only the background color should be changed can be used:

```
.background{ background-color:#B39485 }
```

This example shows the color as background, it is applied via the CSS property "background".

To optimize and compress your CSS code, you can use our [online CSS compressor and optimizer](#) based on csstidy. If you want to create a linear or radial gradient as background or border, check our [CSS Gradient Generator](#).



Hey! You found this booklet interesting? Support Converting Colors with the new Membership Option!

The pro membership hides all ads, plus gives you double the colors in the color bucket, and more awesome pro features!

**[Learn more, Memberships starting at \\$2.50/m!](#)**

**Follow me  
on Twitter!**

@ConvertingColor