

Converting Colors

Decimal(11770273)

Have a look what the booklet for
Decimal(11770273) contains.

Decimal(11770273)	3
<i>Conversions</i>	4
<i>Details</i>	6
<i>Harmonies</i>	11
<i>Previews</i>	23
<i>Color Blindness Simulation</i>	26
<i>CSS Examples</i>	29

Color

Decimal(11770273)

Conversions

Conversions Part 1

Format	Color
Hex	B399A1
RGB	179, 153, 161
RGB Percent	70%, 60%, 63%
CMY	0.2980, 0.4000, 0.3686
CMYK	0.00, 0.15, 0.10, 0.30
HSL	342°, 15%, 65%
HSV	342°, 15%, 70%
XYZ	36.4147, 34.9394, 38.5429
YIQ	161.6860, 12.9280, 8.0000

Conversions

Conversions Part 2

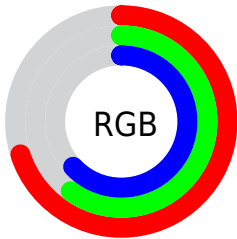
Format	Color
RYB	179, 153, 161
Decimal	11770273
CIELab	65.70, 10.99, -0.61
CIELCh	66, 11.003, 356.799
Yxy	34.9394, 0.3314, 0.3179
Android (android.graphics.Color)	4289960353 (0xFFB399A1)
YUV	161.6860, -0.3382, 15.1844
Hunter-Lab	59.1095, 6.5239, 2.7161

Details

The Decimal color **11770273** is a light color, and the websafe version is hex **999999**. A complement of this color would be **10073003**, and the grayscale version is **10658466**.

A 20% lighter version of the original color is **15454168**, and **8283758** is the 20% darker color. If you saturate the color by 10%, you get **11765653**, and if you desaturate by 10%, it is **11774893**.

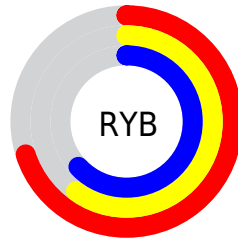
Distribution



Red (70%)

Green (60%)

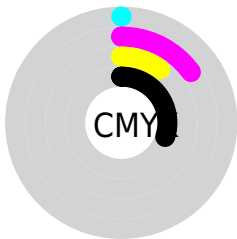
Blue (63%)



Red (70%)

Yellow (60%)

Blue (63%)

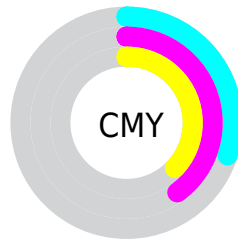


Cyan (0%)

Magenta (15%)

Yellow (10%)

Black (30%)



Cyan (30%)

Magenta (40%)

Yellow (37%)

Brightness & Saturation Gradients

These gradients show how the Decimal color 11770273 changes by changing the brightness by 10 percent. The first figure shows a shift by +10% for each color and the second figure -10%.

Similar to the brightness gradients but the following saturation gradients show a change of the Decimal color 11770273 by changing the saturation by 10% instead.

 11770273

 11770273

16777215

 9994119

 15454168

 8283758

 16772340


 6639189

 5060414


 3547432


 2100244

 0

 11770273

 11770273

 11765653

 11774893

 11761032

 11779514

 11756412

 11784134

 11751791

 11788755

 11747427

 11793375

 11742807

 11796459

 11738186

 11796472

 11733566

 11796479

 11730999

Harmonies

Analogous

The Analogous color harmony consists of three colors that are next to each other on the color wheel.



11312043



11770273



11901335

Triad

The Triadic color harmony groups three colors that are evenly spaced from another and form a triangle on the color wheel.



11770273



10396302



9086128

Complementary

The Complementary color scheme is a pair of colors which are on the opposite of each other on the color wheel.



11770273



10073003

Split Complementary

Split-complementary colors differ from the complementary color scheme. The scheme consists of three colors, the original color and two neighbors of the complement color.



8889768



11770273



9675925

Square

The Square scheme is like the rectangle color scheme, but the four colors are evenly spaced on the color wheel.



11770273



11116428



9086366



9740723

Rectangle

The Rectangle color scheme consists of four colors that form a rectangle on the color wheel.



11770273



11770770



9086366



8955054

Sweetspot

The Sweet Spot groups the original color and five complimentary colors.



11770273



15261666



11246003



7696241



16119285



7697781

Same Dimension

The Same Dimension uses a secret algorithm to generate beautiful new colors.



11770273



15253965



11771545



5853267



10027055



1703944

Inverse Universe

The Inverse Universe completely reimagines the original color for something new.



11770273



15253965



10071731



5853267



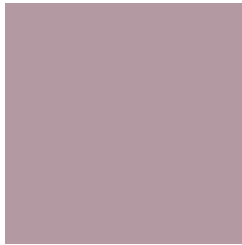
10027055



1703944

Previews

White Background



This preview shows how the Decimal color 11770273 looks on a white background.

Color Contrast Check

Large Text (above 18pt) WCAG AA × Fail

Any Text WCAG AA × Fail

Large Text (above 18pt) WCAG AAA × Fail

Any Text WCAG AAA × Fail

Black Background



This preview shows how the Decimal color 11770273 looks on a black background.

Color Contrast Check

Large Text (above 18pt) WCAG AA ✓ Pass

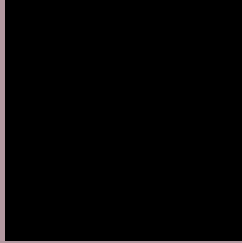
Any Text WCAG AA ✓ Pass

Large Text (above 18pt) WCAG AAA ✓ Pass

Any Text WCAG AAA ✓ Pass

If you want to check with other color combinations, try the [Color Contrast Checker](#).

Decimal 11770273 Background



This preview shows how black text looks on a background with the Decimal color 11770273.



This preview shows how white text looks on a background with the Decimal color 11770273.

Color Blindness Simulation

Color vision deficiency is a very complex topic, and I could not describe the different causes any better than Wikipedia does, so if you want to learn more, you should check out their [article about color blindness](#).

Dichromacy



Original Color
11770273

Protanopia
10592164

Deuteranopia
11508641



Tritanopia
11770020

Trichromacy



Original Color
11770273

Protanomaly
11050403

Deuteranomaly
11573921

Tritanomaly
11770019

Monochromacy



Original Color
11770273

Achromatopsia
10658466

Achromatomaly
11050914

CSS Examples

Text

The CSS property to change the color of the text to Decimal 11770273 is called "color". The color property can be set on classes, ids or directly on the HTML element.

This example shows how text in the color #B399A1 looks like.

```
.text, #text, p{  
    color:#B399A1  
}
```

If you want to add a text shadow in that color use the text-shadow property, you can generate a text shadow directly with our [CSS Text Shadow Generator](#).

Here you see how black text with a 4 pixel #B399A1 colored shadow looks like.

```
.shadow{ text-shadow: 4px 4px 2px #B399A1
}
```

Border

The CSS property to change the border of an element to Decimal 11770273 is called "border". The border property can be set on classes, ids or directly on the HTML element.

This example shows the color as border, it can be applied via the CSS property "border" or "border-color".

```
.border, #border, table{ border:4px solid
#B399A1 }
```

If only the border color should be changed use the property `border-color`.

```
.border{ border-color:#B399A1 }
```

If you want to add a box shadow in that color use:

Here you see how a box with a 4 pixel #B399A1 colored shadow looks like.

```
.boxshadow{ -moz-box-shadow:4px 4px 4px  
4px #B399A1; -webkit-box-shadow:4px 4px  
4px 4px #B399A1; box-shadow:4px 4px 4px  
4px #B399A1 }
```

Background

The CSS property to change the background color of an element to Decimal 11770273 is called "background". The background property can be set on classes, ids or directly on the HTML element.

```
.background, #background, body{  
background:#B399A1 }
```

If only the background color should be changed can be used:

```
.background{ background-color:#B399A1 }
```

This example shows the color as background, it is applied via the CSS property "background".

To optimize and compress your CSS code, you can use our [online CSS compressor and optimizer](#) based on csstidy. If you want to create a linear or radial gradient as background or border, check our [CSS Gradient Generator](#).

Hey! You found this booklet interesting? Support Converting Colors with the new Membership Option!

The pro membership hides all ads, plus gives you double the colors in the color bucket, and more awesome pro features!

[Learn more, Memberships starting at \\$2.50/m!](#)

**Follow me
on Twitter!**

@ConvertingColor