

# Converting Colors

Decimal(11770522)

Have a look what the booklet for  
Decimal(11770522) contains.

<b>Decimal(11770522)</b> .....	3
<i><b>Conversions</b></i> .....	4
<i><b>Details</b></i> .....	6
<i><b>Harmonies</b></i> .....	11
<i><b>Previews</b></i> .....	23
<i><b>Color Blindness Simulation</b></i> .....	26
<i><b>CSS Examples</b></i> .....	29

# **Color**

**Decimal(11770522)**

# Conversions

## Conversions Part 1

Format	Color
Hex	B39A9A
RGB	179, 154, 154
RGB Percent	70%, 60%, 60%
CMY	0.2980, 0.3961, 0.3961
CMYK	0.00, 0.14, 0.14, 0.30
HSL	0°, 14%, 65%
HSV	0°, 14%, 70%
XYZ	35.9787, 35.0280, 35.4366
YIQ	161.4750, 14.9000, 5.3000

# Conversions

## Conversions Part 2

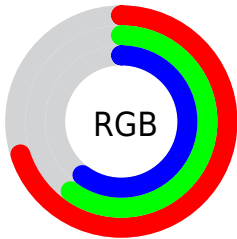
Format	Color
<a href="#">RYB</a>	<a href="#">179, 154, 154</a>
Decimal	<a href="#">11770522</a>
CIELab	<a href="#">65.77, 9.23, 3.41</a>
CIElCh	<a href="#">66, 9.844, 20.283</a>
Yxy	<a href="#">35.0280, 0.3380, 0.3291</a>
Android (android.graphics.Color)	<a href="#">4289960602</a> ( <a href="#">0xFFB39A9A</a> )
YUV	<a href="#">161.4750, -3.6852, 15.3694</a>
Hunter-Lab	<a href="#">59.1845, 4.9389, 5.9293</a>

# Details

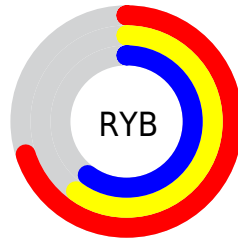
The Decimal color **11770522** is a light color, and the websafe version is hex **999999**. A complement of this color would be **10138547**, and the grayscale version is **10658466**.

A 20% lighter version of the original color is **15454416**, and **8284007** is the 20% darker color. If you saturate the color by 10%, you get **11765896**, and if you desaturate by 10%, it is **11775148**.

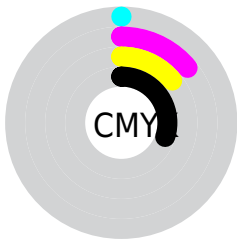
# Distribution



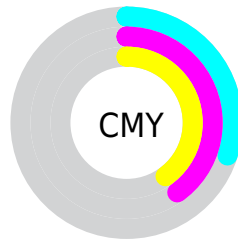
- Red (70%)
- Green (60%)
- Blue (60%)



- Red (70%)
- Yellow (60%)
- Blue (60%)



- Cyan (0%)
- Magenta (14%)
- Yellow (14%)
- Black (30%)



- Cyan (30%)
- Magenta (40%)
- Yellow (40%)

# Brightness & Saturation Gradients

These gradients show how the Decimal color 11770522 changes by changing the brightness by 10 percent. The first figure shows a shift by +10% for each color and the second figure -10%.

Similar to the brightness gradients but the following saturation gradients show a change of the Decimal color 11770522 by changing the saturation by 10% instead.



 11770522

 11770522

16777215

 9994368

 15454416

 8284007

 16772589

 6639439

 5060664

 3482147

 2166029

 0

 11770522

 11770522

 11765896

 11775148

 11761270

 11779774

 11756644

 11784400

 11752018

 11789026

 11747649

 11793652

 11743023

 11796479

 11738397

 11733771

 11730944

# Harmonies

## Analogous

The Analogous color harmony consists of three colors that are next to each other on the color wheel.



11573923



11770522



11639955

# Triad

The Triadic color harmony groups three colors that are evenly spaced from another and form a triangle on the color wheel.



11770522



9872276



9675185

# Complementary

The Complementary color scheme is a pair of colors which are on the opposite of each other on the color wheel.



11770522



10138547

# Split Complementary

Split-complementary colors differ from the complementary color scheme. The scheme consists of three colors, the original color and two neighbors of the complement color.



9217197



11770522



9348508

# Square

The Square scheme is like the rectangle color scheme, but the four colors are evenly spaced on the color wheel.



11770522



10592655



9086373



10395312

# Rectangle

The Rectangle color scheme consists of four colors that form a rectangle on the color wheel.



11770522



11378063



9086373



9478832



# Sweetspot

The Sweet Spot groups the original color and five complimentary colors.



11770522



15261663



11770547



7696239



16119285



7697781



# Same Dimension

The Same Dimension uses a secret algorithm to generate beautiful new colors.



11770522



15253953



11773850



5853264



10027008



1703936



# Inverse Universe

The Inverse Universe completely reimagines the original color for something new.



10138547



12708072



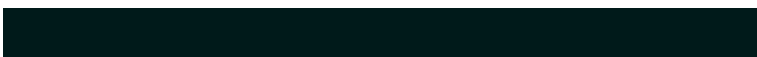
10135475



5265753



39321

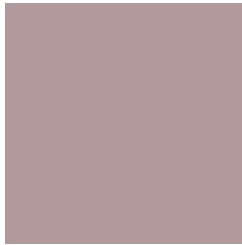


6682



# Previews

## White Background



This preview shows how the Decimal color 11770522 looks on a white background.

## Color Contrast Check

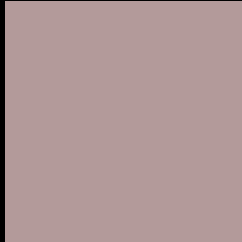
Large Text (above 18pt) WCAG AA × Fail

Any Text WCAG AA × Fail

Large Text (above 18pt) WCAG AAA × Fail

Any Text WCAG AAA × Fail

# Black Background



This preview shows how the Decimal color 11770522 looks on a black background.

## Color Contrast Check

Large Text (above 18pt) WCAG AA ✓ Pass

Any Text WCAG AA ✓ Pass

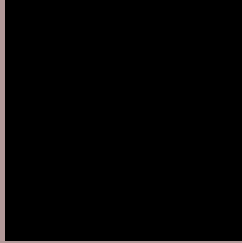
Large Text (above 18pt) WCAG AAA ✓ Pass

Any Text WCAG AAA ✓ Pass

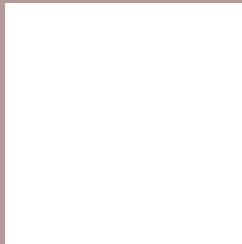
If you want to check with other color combinations, try the [Color Contrast Checker](#).



## Decimal 11770522 Background



This preview shows how black text looks on a background with the Decimal color 11770522.




This preview shows how white text looks on a background with the Decimal color 11770522.

# Color Blindness Simulation

Color vision deficiency is a very complex topic, and I could not describe the different causes any better than Wikipedia does, so if you want to learn more, you should check out their [article about color blindness](#).

## Dichromacy

	<b>Original Color</b> <a href="#">11770522</a>
	<b>Protanopia</b> <a href="#">10723229</a>
	<b>Deuteranopia</b> <a href="#">11705242</a>



**Tritanopia**  
11835556

# Trichromacy



**Original Color**  
11770522

**Protanomaly**  
11115932

**Deuteranomaly**  
11705242

**Tritanomaly**  
11835808

# Monochromacy



**Original Color**  
11770522

**Achromatopsia**  
10592673

**Achromatomaly**  
11050654

# CSS Examples

## Text

The CSS property to change the color of the text to Decimal 11770522 is called "color". The color property can be set on classes, ids or directly on the HTML element.

This example shows how text in the color #B39A9A looks like.

```
.text, #text, p{  
    color:#B39A9A  
}
```

If you want to add a text shadow in that color use the text-shadow property, you can generate a text shadow directly with our [CSS Text Shadow Generator](#).

Here you see how black text with a 4 pixel #B39A9A colored shadow looks like.

```
.shadow{ text-shadow: 4px 4px 2px #B39A9A
}
```

## Border

The CSS property to change the border of an element to Decimal 11770522 is called "border". The border property can be set on classes, ids or directly on the HTML element.

This example shows the color as border, it can be applied via the CSS property "border" or "border-color".

```
.border, #border, table{ border:4px solid
#B39A9A }
```

If only the border color should be changed use the property `border-color`.

```
.border{ border-color:#B39A9A }
```

If you want to add a box shadow in that color use:

Here you see how a box with a 4 pixel #B39A9A colored shadow looks like.

```
.boxshadow{ -moz-box-shadow:4px 4px 4px  
4px #B39A9A; -webkit-box-shadow:4px 4px  
4px 4px #B39A9A; box-shadow:4px 4px 4px  
4px #B39A9A }
```

# Background

The CSS property to change the background color of an element to Decimal 11770522 is called "background". The background property can be set on classes, ids or directly on the HTML element.

```
.background, #background, body{  
background:#B39A9A }
```

If only the background color should be changed can be used:

```
.background{ background-color:#B39A9A }
```

This example shows the color as background, it is applied via the CSS property "background".

To optimize and compress your CSS code, you can use our [online CSS compressor and optimizer](#) based on csstidy. If you want to create a linear or radial gradient as background or border, check our [CSS Gradient Generator](#).



Hey! You found this booklet interesting? Support Converting Colors with the new Membership Option!

The pro membership hides all ads, plus gives you double the colors in the color bucket, and more awesome pro features!

**[Learn more, Memberships starting at \\$2.50/m!](#)**

**Follow me  
on Twitter!**

@ConvertingColor