

Converting Colors

Decimal(11771813)

Have a look what the booklet for
Decimal(11771813) contains.

Decimal(11771813)	3
<i>Conversions</i>	4
<i>Details</i>	6
<i>Harmonies</i>	11
<i>Previews</i>	23
<i>Color Blindness Simulation</i>	26
<i>CSS Examples</i>	29

Color

Decimal(11771813)

Conversions

Conversions Part 1

Format	Color
Hex	B39FA5
RGB	179, 159, 165
RGB Percent	70%, 62%, 65%
CMY	0.2980, 0.3765, 0.3529
CMYK	0.00, 0.11, 0.08, 0.30
HSL	342°, 12%, 66%
HSV	342°, 11%, 70%
XYZ	37.7801, 37.0966, 40.7664
YIQ	165.6640, 9.9940, 6.1060

Conversions

Conversions Part 2

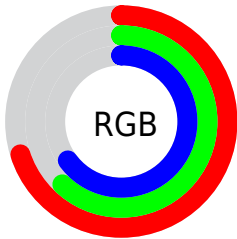
Format	Color
RYB	179, 159, 165
Decimal	11771813
CIELab	67.35, 8.37, -0.44
CIELCh	67, 8.377, 356.970
Yxy	37.0966, 0.3267, 0.3208
Android (android.graphics.Color)	4289961893 (0xFFB39FA5)
YUV	165.6640, -0.3274, 11.6957
Hunter-Lab	60.9070, 4.1348, 2.9507

Details

The Decimal color **11771813** is a light color, and the websafe version is hex **999999**. A complement of this color would be **10466221**, and the grayscale version is **10921638**.

A 20% lighter version of the original color is **15455964**, and **8285297** is the 20% darker color. If you saturate the color by 10%, you get **11767192**, and if you desaturate by 10%, it is **11776434**.

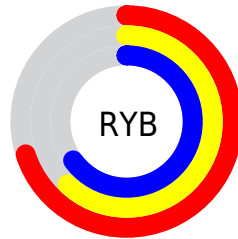
Distribution



Red (70%)

Green (62%)

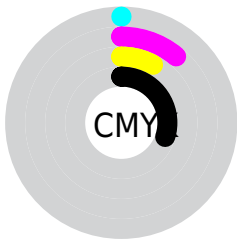
Blue (65%)



Red (70%)

Yellow (62%)

Blue (65%)

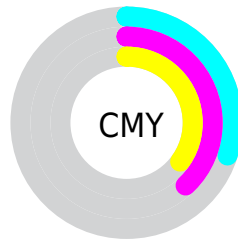


Cyan (0%)

Magenta (11%)

Yellow (8%)

Black (30%)



Cyan (30%)


Magenta (38%)


Yellow (35%)

Brightness & Saturation Gradients

These gradients show how the Decimal color 11771813 changes by changing the brightness by 10 percent. The first figure shows a shift by +10% for each color and the second figure -10%.

Similar to the brightness gradients but the following saturation gradients show a change of the Decimal color 11771813 by changing the saturation by 10% instead.

 11771813

 11771813

16777215

 9995659

 15455964

 8285297

 16773880

 6640473

 5061697

 3548715

 2167319

 0

 11771813

 11771813

 11767192

 11776434

 11762572

 11781054

 11757951

 11785675

 11753331

 11790295

 11748966

 11794916

 11744346

 11796464

 11739725

 11796477

 11735105

 11796479

 11730998

Harmonies

Analogous

The Analogous color harmony consists of three colors that are next to each other on the color wheel.



11378860



11771813



11902877

Triad

The Triadic color harmony groups three colors that are evenly spaced from another and form a triangle on the color wheel.



11771813



10725014



9742256

Complementary

The Complementary color scheme is a pair of colors which are on the opposite of each other on the color wheel.



11771813



10466221

Split Complementary

Split-complementary colors differ from the complementary color scheme. The scheme consists of three colors, the original color and two neighbors of the complement color.



9545898



11771813



10135708

Square

The Square scheme is like the rectangle color scheme, but the four colors are evenly spaced on the color wheel.



11771813



11248533



9742499



10200499

Rectangle

The Rectangle color scheme consists of four colors that form a rectangle on the color wheel.



11771813



11772057



9742499



9676975

Sweetspot

The Sweet Spot groups the original color and five complimentary colors.



11771813



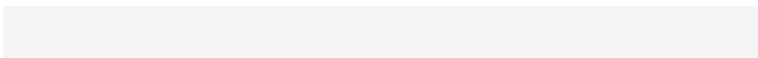
15262179



11378611



7696754



16119285



7697781

Same Dimension

The Same Dimension uses a secret algorithm to generate beautiful new colors.



11771813



15256275



11772831



5853267



10027054



1703944

Inverse Universe

The Inverse Universe completely reimagines the original color for something new.



11771813



15256275



10465203



5853267



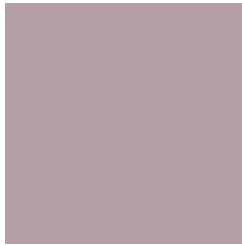
10027054



1703944

Previews

White Background



This preview shows how the Decimal color 11771813 looks on a white background.

Color Contrast Check

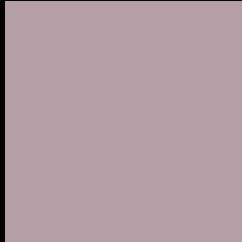
Large Text (above 18pt) WCAG AA × Fail

Any Text WCAG AA × Fail

Large Text (above 18pt) WCAG AAA × Fail

Any Text WCAG AAA × Fail

Black Background



This preview shows how the Decimal color 11771813 looks on a black background.

Color Contrast Check

Large Text (above 18pt) WCAG AA ✓ Pass

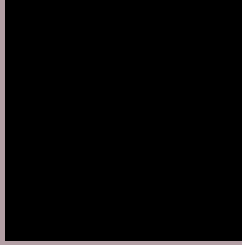
Any Text WCAG AA ✓ Pass

Large Text (above 18pt) WCAG AAA ✓ Pass

Any Text WCAG AAA ✓ Pass

If you want to check with other color combinations, try the [Color Contrast Checker](#).

Decimal 11771813 Background



This preview shows how black text looks on a background with the Decimal color 11771813.



This preview shows how white text looks on a background with the Decimal color 11771813.

Color Blindness Simulation

Color vision deficiency is a very complex topic, and I could not describe the different causes any better than Wikipedia does, so if you want to learn more, you should check out their [article about color blindness](#).

Dichromacy



Original Color
11771813

Protanopia
10920871

Deuteranopia
11771813



Tritanopia
11837099

Trichromacy



Original Color
11771813

Protanomaly
11248294

Deuteranomaly
11771813

Tritanomaly
11837097

Monochromacy



Original Color
11771813

Achromatopsia
10921638

Achromatomaly
11248550

CSS Examples

Text

The CSS property to change the color of the text to Decimal 11771813 is called "color". The color property can be set on classes, ids or directly on the HTML element.

This example shows how text in the color #B39FA5 looks like.

```
.text, #text, p{  
    color:#B39FA5  
}
```

If you want to add a text shadow in that color use the text-shadow property, you can generate a text shadow directly with our [CSS Text Shadow Generator](#).

Here you see how black text with a 4 pixel #B39FA5 colored shadow looks like.

```
.shadow{ text-shadow: 4px 4px 2px #B39FA5
}
```

Border

The CSS property to change the border of an element to Decimal 11771813 is called "border". The border property can be set on classes, ids or directly on the HTML element.

This example shows the color as border, it can be applied via the CSS property "border" or "border-color".

```
.border, #border, table{ border:4px solid
#B39FA5 }
```

If only the border color should be changed use the property `border-color`.

```
.border{ border-color:#B39FA5 }
```

If you want to add a box shadow in that color use:

Here you see how a box with a 4 pixel #B39FA5 colored shadow looks like.

```
.boxshadow{ -moz-box-shadow:4px 4px 4px  
4px #B39FA5; -webkit-box-shadow:4px 4px  
4px 4px #B39FA5; box-shadow:4px 4px 4px  
4px #B39FA5 }
```

Background

The CSS property to change the background color of an element to Decimal 11771813 is called "background". The background property can be set on classes, ids or directly on the HTML element.

```
.background, #background, body{  
background:#B39FA5 }
```

If only the background color should be changed can be used:

```
.background{ background-color:#B39FA5 }
```

This example shows the color as background, it is applied via the CSS property "background".

To optimize and compress your CSS code, you can use our [online CSS compressor and optimizer](#) based on csstidy. If you want to create a linear or radial gradient as background or border, check our [CSS Gradient Generator](#).

Hey! You found this booklet interesting? Support Converting Colors with the new Membership Option!

The pro membership hides all ads, plus gives you double the colors in the color bucket, and more awesome pro features!

[Learn more, Memberships starting at \\$2.50/m!](#)

**Follow me
on Twitter!**

@ConvertingColor