

Converting Colors

Decimal(11829897)

Have a look what the booklet for
Decimal(11829897) contains.

Decimal(11829897)	3
<i>Conversions</i>	4
<i>Details</i>	6
<i>Harmonies</i>	11
<i>Previews</i>	23
<i>Color Blindness Simulation</i>	26
<i>CSS Examples</i>	29

Color

Decimal(11829897)

Conversions

Conversions Part 1

Format	Color
Hex	B48289
RGB	180, 130, 137
RGB Percent	71%, 51%, 54%
CMY	0.2941, 0.4902, 0.4627
CMYK	0.00, 0.28, 0.24, 0.29
HSL	352°, 25%, 61%
HSV	352°, 28%, 71%
XYZ	31.3204, 27.4747, 27.3193
YIQ	145.7480, 27.5530, 12.7770

Conversions

Conversions Part 2

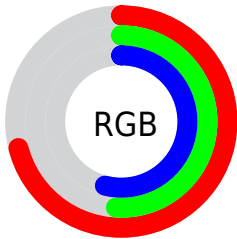
Format	Color
RYB	180, 130, 137
Decimal	11829897
CIELab	59.41, 20.31, 3.88
CIElCh	59, 20.674, 10.804
Yxy	27.4747, 0.3637, 0.3190
Android (android.graphics.Color)	4290019977 (0xFFB48289)
YUV	145.7480, -4.3128, 30.0390
Hunter-Lab	52.4163, 14.9307, 5.7896

Details

The Decimal color **11829897** is a light color, and the websafe version is hex **CC9999**. A complement of this color would be **8565933**, and the grayscale version is **9605778**.

A 20% lighter version of the original color is **15579070**, and **8278103** is the 20% darker color. If you saturate the color by 10%, you get **11825274**, and if you desaturate by 10%, it is **11834520**.

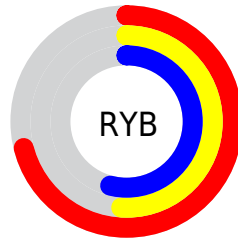
Distribution



Red (71%)

Green (51%)

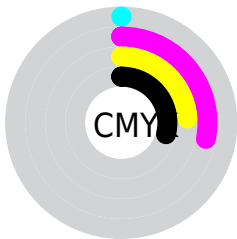
Blue (54%)



Red (71%)

Yellow (51%)

Blue (54%)

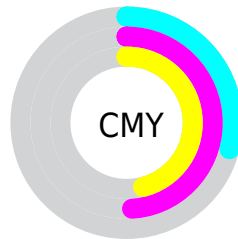


Cyan (0%)

Magenta (28%)

Yellow (24%)

Black (29%)



Cyan (29%)

Magenta (49%)

Yellow (46%)

Brightness & Saturation Gradients

These gradients show how the Decimal color 11829897 changes by changing the brightness by 10 percent. The first figure shows a shift by +10% for each color and the second figure -10%.

Similar to the brightness gradients but the following saturation gradients show a change of the Decimal color 11829897 by changing the saturation by 10% instead.

 11829897

 11829897

16777215

 10054000

 15579070

 8278103

 16765914

 6568256

 16773111

 4923946


 3345686

 2031617

 0

 11829897

 11829897

 11825274

 11834520

 11820650

 11839144

 11816027

 11843767

 11811403

 11848391

 11806780

 11853014

 11802156

 11857638

 11797533

 11862005

 11796505

 11862015

Harmonies

Analogous

The Analogous color harmony consists of three colors that are next to each other on the color wheel.



11305883



11829897



11699576

Triad

The Triadic color harmony groups three colors that are evenly spaced from another and form a triangle on the color wheel.



11829897



8492403



6984881

Complementary

The Complementary color scheme is a pair of colors which are on the opposite of each other on the color wheel.



11829897



8565933

Split Complementary

Split-complementary colors differ from the complementary color scheme. The scheme consists of three colors, the original color and two neighbors of the complement color.



6068390



11829897



7182467

Square

The Square scheme is like the rectangle color scheme, but the four colors are evenly spaced on the color wheel.



11829897



9867371



6199701



8556210

Rectangle

The Rectangle color scheme consists of four colors that form a rectangle on the color wheel.



11829897



11241584



6199701



6592174

Sweetspot

The Sweet Spot groups the original color and five complimentary colors.



11829897



15456474



11371188



7694955



16119285



7697781

Same Dimension

The Same Dimension uses a secret algorithm to generate beautiful new colors.



11829897



15441320



11834498



5853266



10027029



1703940

Inverse Universe

The Inverse Universe completely reimagines the original color for something new.



11829897



15441320



8561588



5853266



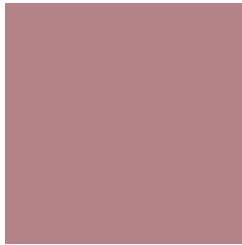
10027029



1703940

Previews

White Background



This preview shows how the Decimal color 11829897 looks on a white background.

Color Contrast Check

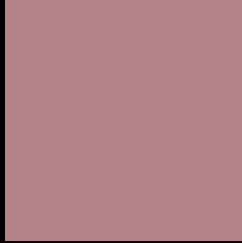
Large Text (above 18pt) WCAG AA ✓ Pass

Any Text WCAG AA ✗ Fail

Large Text (above 18pt) WCAG AAA ✗ Fail

Any Text WCAG AAA ✗ Fail

Black Background



This preview shows how the Decimal color 11829897 looks on a black background.

Color Contrast Check

Large Text (above 18pt) WCAG AA ✓ Pass

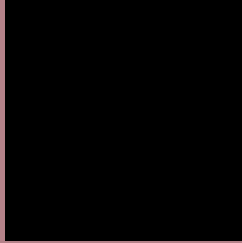
Any Text WCAG AA ✓ Pass

Large Text (above 18pt) WCAG AAA ✓ Pass

Any Text WCAG AAA × Fail

If you want to check with other color combinations, try the [Color Contrast Checker](#).

Decimal 11829897 Background



This preview shows how black text looks on a background with the Decimal color 11829897.



This preview shows how white text looks on a background with the Decimal color 11829897.

Color Blindness Simulation

Color vision deficiency is a very complex topic, and I could not describe the different causes any better than Wikipedia does, so if you want to learn more, you should check out their [article about color blindness](#).

Dichromacy





Tritanopia
11829900

Trichromacy



Original Color
11829897

Protanomaly
10390157

Deuteranomaly
10979208

Tritanomaly
11829899

Monochromacy



Original Color
11829897

Achromatopsia
9605778

Achromatomaly
10390671

CSS Examples

Text

The CSS property to change the color of the text to Decimal 11829897 is called "color". The color property can be set on classes, ids or directly on the HTML element.

This example shows how text in the color #B48289 looks like.

```
.text, #text, p{  
  color:#B48289  
}
```

If you want to add a text shadow in that color use the text-shadow property, you can generate a text shadow directly with our [CSS Text Shadow Generator](#).

Here you see how black text with a 4 pixel #B48289 colored shadow looks like.

```
.shadow{ text-shadow: 4px 4px 2px #B48289
}
```

Border

The CSS property to change the border of an element to Decimal 11829897 is called "border". The border property can be set on classes, ids or directly on the HTML element.

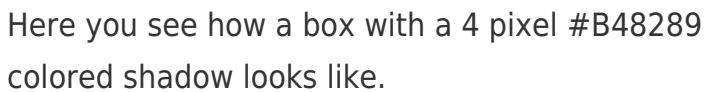
This example shows the color as border, it can be applied via the CSS property "border" or "border-color".

```
.border, #border, table{ border:4px solid
#B48289 }
```

If only the border color should be changed use the property border-color.

```
.border{ border-color:#B48289 }
```

If you want to add a box shadow in that color use:



Here you see how a box with a 4 pixel #B48289 colored shadow looks like.

```
.boxshadow{ -moz-box-shadow:4px 4px 4px  
4px #B48289; -webkit-box-shadow:4px 4px  
4px 4px #B48289; box-shadow:4px 4px 4px  
4px #B48289 }
```

Background

The CSS property to change the background color of an element to Decimal 11829897 is called "background". The background property can be set on classes, ids or directly on the HTML element.

```
.background, #background, body{  
background:#B48289 }
```

If only the background color should be changed can be used:

```
.background{ background-color:#B48289 }
```

This example shows the color as background, it is applied via the CSS property "background".

To optimize and compress your CSS code, you can use our [online CSS compressor and optimizer](#) based on csstidy. If you want to create a linear or radial gradient as background or border, check our [CSS Gradient Generator](#).

Hey! You found this booklet interesting? Support Converting Colors with the new Membership Option!

The pro membership hides all ads, plus gives you double the colors in the color bucket, and more awesome pro features!

[Learn more, Memberships starting at \\$2.50/m!](#)

**Follow me
on Twitter!**

@ConvertingColor