

Converting Colors

Decimal(11830087)

Have a look what the booklet for
Decimal(11830087) contains.

Decimal(11830087)	3
<i>Conversions</i>	4
<i>Details</i>	6
<i>Harmonies</i>	11
<i>Previews</i>	23
<i>Color Blindness Simulation</i>	26
<i>CSS Examples</i>	29

Color

Decimal(11830087)

Conversions

Conversions Part 1

Format	Color
Hex	B48347
RGB	180, 131, 71
RGB Percent	71%, 51%, 28%
CMY	0.2941, 0.4863, 0.7216
CMYK	0.00, 0.27, 0.61, 0.29
HSL	33°, 43%, 49%
HSV	33°, 61%, 71%
XYZ	28.0760, 26.3908, 9.5754
YIQ	138.8110, 48.4640, -8.2720

Conversions

Conversions Part 2

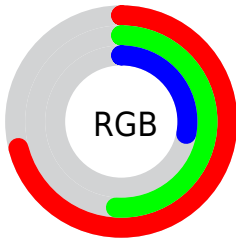
Format	Color
RYB	160, 180, 71
Decimal	11830087
CIELab	58.41, 12.28, 39.35
CIELCh	58, 41.218, 72.671
Yxy	26.3908, 0.4384, 0.4121
Android (android.graphics.Color)	4290020167 (0xFFB48347)
YUV	138.8110, -33.4308, 36.1228
Hunter-Lab	51.3720, 7.6535, 24.9091

Details

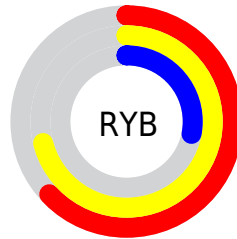
The Decimal color **11830087** is a dark color, and the websafe version is hex **CC9966**. A complement of this color would be **4683956**, and the grayscale version is **9145227**.

A 20% lighter version of the original color is **15644793**, and **8147479** is the 20% darker color. If you saturate the color by 10%, you get **11828021**, and if you desaturate by 10%, it is **11832153**.

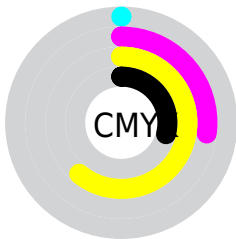
Distribution



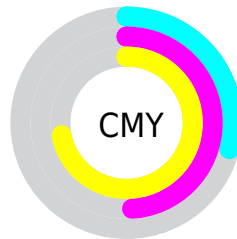
- Red (71%)
- Green (51%)
- Blue (28%)



- Red (63%)
- Yellow (71%)
- Blue (28%)



- Cyan (0%)
- Magenta (27%)
- Yellow (61%)
- Black (29%)



- Cyan (29%)
- Magenta (49%)
- Yellow (72%)

Brightness & Saturation Gradients

These gradients show how the Decimal color 11830087 changes by changing the brightness by 10 percent. The first figure shows a shift by +10% for each color and the second figure -10%.

Similar to the brightness gradients but the following saturation gradients show a change of the Decimal color 11830087 by changing the saturation by 10% instead.

 11830087

 11830087

16777215

 9988655

 15644793

 8147479

 16766099

 6372096

 16773294

 4596992

 16777162

 2887936

 16777190

 917504

 0

 11830087

 11830087

 11828021

 11832153

■ 11825955

■ 11834219

■ 11823889

■ 11836285

■ 11821824

■ 11838351

■ 11840417

■ 11842739

■ 11844805

■ 11846871

■ 11848937

Harmonies

Analogous

The Analogous color harmony consists of three colors that are next to each other on the color wheel.



13268573



11830087



9736004

Triad

The Triadic color harmony groups three colors that are evenly spaced from another and form a triangle on the color wheel.



11830087



40859



10714562

Complementary

The Complementary color scheme is a pair of colors which are on the opposite of each other on the color wheel.



11830087



4683956

Split Complementary

Split-complementary colors differ from the complementary color scheme. The scheme consists of three colors, the original color and two neighbors of the complement color.



7179219



11830087



40380

Square

The Square scheme is like the rectangle color scheme, but the four colors are evenly spaced on the color wheel.



11830087



3579510



38609



12939939

Rectangle

The Rectangle color scheme consists of four colors that form a rectangle on the color wheel.



11830087



8033870



38609



9732809

Sweetspot

The Sweet Spot groups the original color and five complimentary colors.



11830087



15456448



11814776



7694939



16119285



7697781

Same Dimension

The Same Dimension uses a secret algorithm to generate beautiful new colors.



11830087



15441471



11514951



5854544



10048512



1707520

Inverse Universe

The Inverse Universe completely reimagines the original color for something new.



4683956



4164843



4999092



5264473



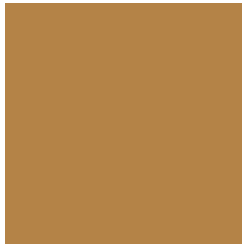
17817



2842

Previews

White Background



This preview shows how the Decimal color 11830087 looks on a white background.

Color Contrast Check

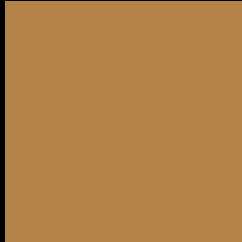
Large Text (above 18pt) WCAG AA ✓ Pass

Any Text WCAG AA × Fail

Large Text (above 18pt) WCAG AAA × Fail

Any Text WCAG AAA × Fail

Black Background



This preview shows how the Decimal color 11830087 looks on a black background.

Color Contrast Check

Large Text (above 18pt) WCAG AA ✓ Pass

Any Text WCAG AA ✓ Pass

Large Text (above 18pt) WCAG AAA ✓ Pass

Any Text WCAG AAA × Fail

If you want to check with other color combinations, try the [Color Contrast Checker](#).

Decimal 11830087 Background



This preview shows how black text looks on a background with the Decimal color 11830087.



This preview shows how white text looks on a background with the Decimal color 11830087.

Color Blindness Simulation

Color vision deficiency is a very complex topic, and I could not describe the different causes any better than Wikipedia does, so if you want to learn more, you should check out their [article about color blindness](#).


Dichromacy



Original Color
11830087

Protanopia
10194250

Deuteranopia
11372102



Tritanopia
12156037

Trichromacy



Original Color
11830087

Protanomaly
10783049

Deuteranomaly
11568454

Tritanomaly
12025710

Monochromacy



Original Color
11830087

Achromatopsia
9145227

Achromatomaly
10127474

CSS Examples

Text

The CSS property to change the color of the text to Decimal 11830087 is called "color". The color property can be set on classes, ids or directly on the HTML element.

This example shows how text in the color #B48347 looks like.

```
.text, #text, p{  
    color:#B48347  
}
```

If you want to add a text shadow in that color use the text-shadow property, you can generate a text shadow directly with our [CSS Text Shadow Generator](#).

Here you see how black text with a 4 pixel #B48347 colored shadow looks like.

```
.shadow{ text-shadow: 4px 4px 2px #B48347
}
```

Border

The CSS property to change the border of an element to Decimal 11830087 is called "border". The border property can be set on classes, ids or directly on the HTML element.

This example shows the color as border, it can be applied via the CSS property "border" or "border-color".

```
.border, #border, table{ border:4px solid
#B48347 }
```

If only the border color should be changed use the property `border-color`.

```
.border{ border-color:#B48347 }
```

If you want to add a box shadow in that color use:

Here you see how a box with a 4 pixel #B48347 colored shadow looks like.

```
.boxshadow{ -moz-box-shadow:4px 4px 4px  
4px #B48347; -webkit-box-shadow:4px 4px  
4px 4px #B48347; box-shadow:4px 4px 4px  
4px #B48347 }
```

Background

The CSS property to change the background color of an element to Decimal 11830087 is called "background". The background property can be set on classes, ids or directly on the HTML element.

```
.background, #background, body{  
background:#B48347 }
```

If only the background color should be changed can be used:

```
.background{ background-color:#B48347 }
```

This example shows the color as background, it is applied via the CSS property "background".

To optimize and compress your CSS code, you can use our [online CSS compressor and optimizer](#) based on csstidy. If you want to create a linear or radial gradient as background or border, check our [CSS Gradient Generator](#).

Hey! You found this booklet interesting? Support Converting Colors with the new Membership Option!

The pro membership hides all ads, plus gives you double the colors in the color bucket, and more awesome pro features!

[Learn more, Memberships starting at \\$2.50/m!](#)

**Follow me
on Twitter!**

@ConvertingColor