

# Converting Colors

Decimal(11830353)

Have a look what the booklet for  
Decimal(11830353) contains.

<b>Decimal(11830353)</b> .....	3
<i><b>Conversions</b></i> .....	4
<i><b>Details</b></i> .....	6
<i><b>Harmonies</b></i> .....	11
<i><b>Previews</b></i> .....	23
<i><b>Color Blindness Simulation</b></i> .....	26
<i><b>CSS Examples</b></i> .....	29

**Color**

**Decimal(11830353)**

# Conversions

## Conversions Part 1

<b>Format</b>	<b>Color</b>
Hex	B48451
RGB	180, 132, 81
RGB Percent	71%, 52%, 32%
CMY	0.2941, 0.4824, 0.6824
CMYK	0.00, 0.27, 0.55, 0.29
HSL	31°, 40%, 51%
HSV	31°, 55%, 71%
XYZ	28.5589, 26.7999, 11.4523
YIQ	140.5380, 44.9790, -5.6850

# Conversions

## Conversions Part 2

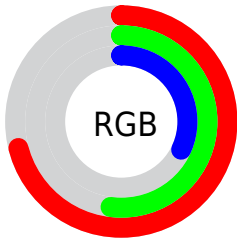
<b>Format</b>	<b>Color</b>
<b>RYB</b>	174, 180, 81
Decimal	11830353
CIELab	58.79, 12.53, 34.54
CIElCh	59, 36.740, 70.065
Yxy	26.7999, 0.4275, 0.4011
Android (android.graphics.Color)	4290020433 (0xFFB48451)
YUV	140.5380, -29.3522, 34.6082
Hunter-Lab	51.7686, 7.8768, 23.1219

# Details

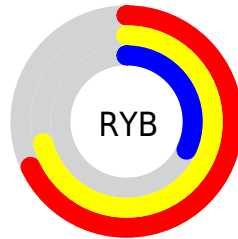
The Decimal color **11830353** is a dark color, and the websafe version is hex **CC9966**. A complement of this color would be **5341620**, and the grayscale version is **9276813**.

A 20% lighter version of the original color is **15645059**, and **8147746** is the 20% darker color. If you saturate the color by 10%, you get **11828031**, and if you desaturate by 10%, it is **11832675**.

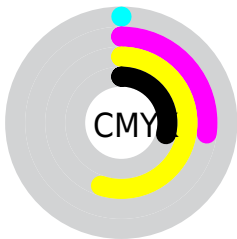
# Distribution



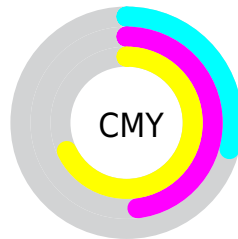
- Red (71%)
- Green (52%)
- Blue (32%)



- Red (68%)
- Yellow (71%)
- Blue (32%)



- Cyan (0%)
- Magenta (27%)
- Yellow (55%)
- Black (29%)



- Cyan (29%)
- Magenta (48%)
- Yellow (68%)

# Brightness & Saturation Gradients


These gradients show how the Decimal color 11830353 changes by changing the brightness by 10 percent. The first figure shows a shift by +10% for each color and the second figure -10%.

Similar to the brightness gradients but the following saturation gradients show a change of the Decimal color 11830353 by changing the saturation by 10% instead.



 11830353  11830353

16777215  9988921

 15645059  8147746

 16766366  6372106

 16773561  4728320

 16777173  3019008

 16777201  1114112

 0

 11830353  11830353

 11828031  11832675

■ 11825965

■ 11834741

■ 11823643

■ 11837063

■ 11821321

■ 11839385

■ 11820288

■ 11841707

■ 11843773

■ 11846095

■ 11848417

■ 11850739

# Harmonies

## Analogous

The Analogous color harmony consists of three colors that are next to each other on the color wheel.



13072742



11830353



9932621

# Triad

The Triadic color harmony groups three colors that are evenly spaced from another and form a triangle on the color wheel.



11830353



40600



10453439

# Complementary

The Complementary color scheme is a pair of colors which are on the opposite of each other on the color wheel.



11830353



5341620

# Split Complementary

Split-complementary colors differ from the complementary color scheme. The scheme consists of three colors, the original color and two neighbors of the complement color.



7310797



11830353



40374

# Square

The Square scheme is like the rectangle color scheme, but the four colors are evenly spaced on the color wheel.



11830353



4889974



2856905



12482468

# Rectangle

The Rectangle color scheme consists of four colors that form a rectangle on the color wheel.



11830353



8492372



2856905



9536965



# Sweetspot

The Sweet Spot groups the original color and five complimentary colors.



11830353



15456195



11817347



7694942



16119285



7697781



# Same Dimension

The Same Dimension uses a secret algorithm to generate beautiful new colors.



11830353



15442000



11842641



5854544



10047232



1707264



# Inverse Universe

The Inverse Universe completely reimagines the original color for something new.



5341620



5282795



5329332



5264729



19097

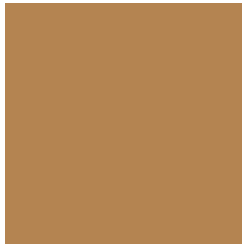


3098



# Previews

## White Background



This preview shows how the Decimal color 11830353 looks on a white background.

## Color Contrast Check

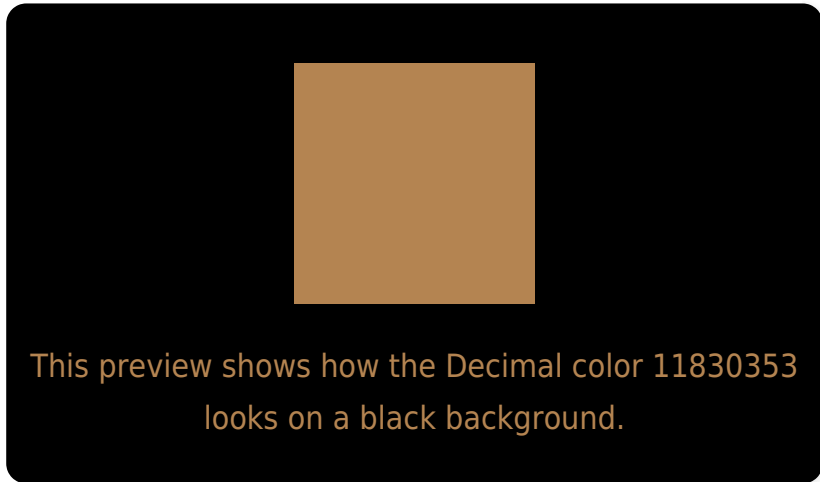
Large Text (above 18pt) WCAG AA ✓ Pass

Any Text WCAG AA × Fail

Large Text (above 18pt) WCAG AAA × Fail

Any Text WCAG AAA × Fail

# Black Background



## Color Contrast Check

Large Text (above 18pt) WCAG AA ✓ Pass

Any Text WCAG AA ✓ Pass

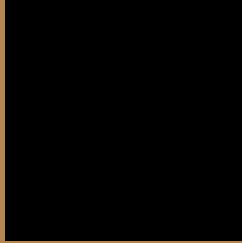
Large Text (above 18pt) WCAG AAA ✓ Pass

Any Text WCAG AAA × Fail

If you want to check with other color combinations, try the [Color Contrast Checker](#).



## Decimal 11830353 Background



This preview shows how black text looks on a background with the Decimal color 11830353.



This preview shows how white text looks on a background with the Decimal color 11830353.

# Color Blindness Simulation

Color vision deficiency is a very complex topic, and I could not describe the different causes any better than Wikipedia does, so if you want to learn more, you should check out their [article about color blindness](#).

## Dichromacy



**Original Color**  
11830353

**Protanopia**  
10194517

**Deuteranopia**  
11372368



**Tritanopia**  
12090759

# Trichromacy



**Original Color**  
11830353

**Protanomaly**  
10783316

**Deuteranomaly**  
11568720

**Tritanomaly**  
12025971

# Monochromacy



**Original Color**  
11830353

**Achromatopsia**  
9276813

**Achromatomaly**  
10193527

# CSS Examples

## Text

The CSS property to change the color of the text to Decimal 11830353 is called "color". The color property can be set on classes, ids or directly on the HTML element.

This example shows how text in the color #B48451 looks like.

```
.text, #text, p{  
    color:#B48451  
}
```

If you want to add a text shadow in that color use the text-shadow property, you can generate a text shadow directly with our [CSS Text Shadow Generator](#).

Here you see how black text with a 4 pixel #B48451 colored shadow looks like.

```
.shadow{ text-shadow: 4px 4px 2px #B48451
}
```

## Border

The CSS property to change the border of an element to Decimal 11830353 is called "border". The border property can be set on classes, ids or directly on the HTML element.

This example shows the color as border, it can be applied via the CSS property "border" or "border-color".

```
.border, #border, table{ border:4px solid
#B48451 }
```

If only the border color should be changed use the property `border-color`.

```
.border{ border-color:#B48451 }
```

If you want to add a box shadow in that color use:

Here you see how a box with a 4 pixel #B48451 colored shadow looks like.

```
.boxshadow{ -moz-box-shadow:4px 4px 4px  
4px #B48451; -webkit-box-shadow:4px 4px  
4px 4px #B48451; box-shadow:4px 4px 4px  
4px #B48451 }
```

# Background

The CSS property to change the background color of an element to Decimal 11830353 is called "background". The background property can be set on classes, ids or directly on the HTML element.

```
.background, #background, body{  
background:#B48451 }
```

If only the background color should be changed can be used:

```
.background{ background-color:#B48451 }
```

This example shows the color as background, it is applied via the CSS property "background".

To optimize and compress your CSS code, you can use our [online CSS compressor and optimizer](#) based on csstidy. If you want to create a linear or radial gradient as background or border, check our [CSS Gradient Generator](#).



Hey! You found this booklet interesting? Support Converting Colors with the new Membership Option!

The pro membership hides all ads, plus gives you double the colors in the color bucket, and more awesome pro features!

**[Learn more, Memberships starting at \\$2.50/m!](#)**

**Follow me  
on Twitter!**

@ConvertingColor