

Converting Colors

Decimal(11831416)

Have a look what the booklet for
Decimal(11831416) contains.

Decimal(11831416)	3
<i>Conversions</i>	4
<i>Details</i>	6
<i>Harmonies</i>	11
<i>Previews</i>	23
<i>Color Blindness Simulation</i>	26
<i>CSS Examples</i>	29

Color

Decimal(11831416)

Conversions

Conversions Part 1

Format	Color
Hex	B48878
RGB	180, 136, 120
RGB Percent	71%, 53%, 47%
CMY	0.2941, 0.4667, 0.5294
CMYK	0.00, 0.24, 0.33, 0.29
HSL	16°, 29%, 59%
HSV	16°, 33%, 71%
XYZ	31.0167, 28.6677, 21.6680
YIQ	147.3320, 31.3600, 4.3520

Conversions

Conversions Part 2

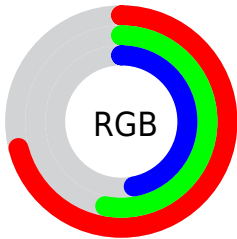
Format	Color
R_{YB}	180, 142, 120
Decimal	11831416
CIE _{Lab}	60.49, 14.55, 15.11
CIE _{LCh}	60, 20.975, 46.080
Yxy	28.6677, 0.3813, 0.3524
Android (android.graphics.Color)	4290021496 (0xFFB48878)
YUV	147.3320, -13.4747, 28.6498
Hunter-Lab	53.5422, 9.7052, 13.4855

Details

The Decimal color **11831416** is a dark color, and the websafe version is hex **CC9999**. A complement of this color would be **7906484**, and the grayscale version is **9671571**.

A 20% lighter version of the original color is **15580588**, and **8279623** is the 20% darker color. If you saturate the color by 10%, you get **11828070**, and if you desaturate by 10%, it is **11834762**.

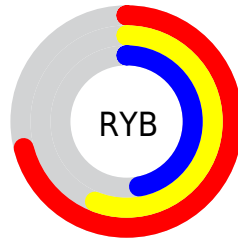
Distribution



Red (71%)

Green (53%)

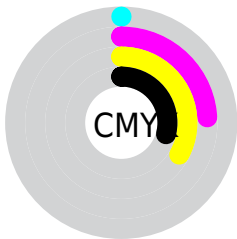
Blue (47%)



Red (71%)

Yellow (56%)

Blue (47%)

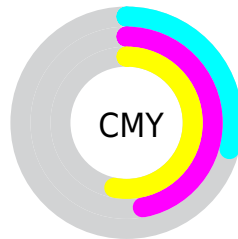


Cyan (0%)

Magenta (24%)

Yellow (33%)

Black (29%)



Cyan (29%)

Magenta (47%)

Yellow (53%)

Brightness & Saturation Gradients

These gradients show how the Decimal color 11831416 changes by changing the brightness by 10 percent. The first figure shows a shift by +10% for each color and the second figure -10%.

Similar to the brightness gradients but the following saturation gradients show a change of the Decimal color 11831416 by changing the saturation by 10% instead.

 11831416

 11831416

16777215

 10055519

 15580588

 8279623

 16767432

 6569777

 16774884

 4925468

 3347202

 1900544

 0

 11831416

 11831416

 11828070

 11834762

■ 11824724

■ 11838108

■ 11821122

■ 11841710

■ 11817776

■ 11845056

■ 11814430

■ 11848402

■ 11811084

■ 11851748

■ 11808768

■ 11855094

■ 11858687

■ 11862015

Harmonies

Analogous

The Analogous color harmony consists of three colors that are next to each other on the color wheel.



12092808



11831416



11046510

Triad

The Triadic color harmony groups three colors that are evenly spaced from another and form a triangle on the color wheel.



11831416



7117960



9015477

Complementary

The Complementary color scheme is a pair of colors which are on the opposite of each other on the color wheel.



11831416



7906484

Split Complementary

Split-complementary colors differ from the complementary color scheme. The scheme consists of three colors, the original color and two neighbors of the complement color.



7378613



11831416



6200475

Square

The Square scheme is like the rectangle color scheme, but the four colors are evenly spaced on the color wheel.



11831416



8427896



6265516



10586796

Rectangle

The Rectangle color scheme consists of four colors that form a rectangle on the color wheel.



11831416



10261101



6265516



8491702

Sweetspot

The Sweet Spot groups the original color and five complimentary colors.



11831416



15456723



11827364



7695207



16119285



7697781

Same Dimension

The Same Dimension uses a secret algorithm to generate beautiful new colors.



11831416



15443597



11839096



5854032



10037504



1705728

Inverse Universe

The Inverse Universe completely reimagines the original color for something new.



7906484



9294571



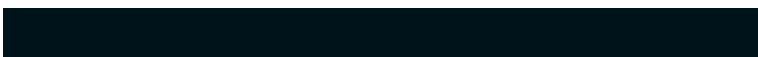
7898804



5265241



28825



4890

Previews

White Background



This preview shows how the Decimal color 11831416 looks on a white background.

Color Contrast Check

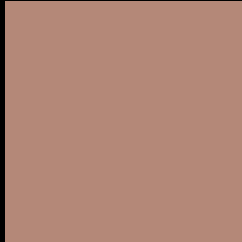
Large Text (above 18pt) WCAG AA ✓ Pass

Any Text WCAG AA × Fail

Large Text (above 18pt) WCAG AAA × Fail

Any Text WCAG AAA × Fail

Black Background



This preview shows how the Decimal color 11831416 looks on a black background.

Color Contrast Check

Large Text (above 18pt) WCAG AA ✓ Pass

Any Text WCAG AA ✓ Pass

Large Text (above 18pt) WCAG AAA ✓ Pass

Any Text WCAG AAA × Fail

If you want to check with other color combinations, try the [Color Contrast Checker](#).

Decimal 11831416 Background



This preview shows how black text looks on a background with the Decimal color 11831416.



This preview shows how white text looks on a background with the Decimal color 11831416.

Color Blindness Simulation

Color vision deficiency is a very complex topic, and I could not describe the different causes any better than Wikipedia does, so if you want to learn more, you should check out their [article about color blindness](#).


Dichromacy



Original Color
11831416

Protanopia
10130045

Deuteranopia
11177079



Tritanopia
11961743

Trichromacy



Original Color
11831416

Protanomaly
10718843

Deuteranomaly
11438967

Tritanomaly
11896455

Monochromacy



Original Color
11831416

Achromatopsia
9671571

Achromatomaly
10456969

CSS Examples

Text

The CSS property to change the color of the text to Decimal 11831416 is called "color". The color property can be set on classes, ids or directly on the HTML element.

This example shows how text in the color #B48878 looks like.

```
.text, #text, p{  
  color:#B48878  
}
```

If you want to add a text shadow in that color use the text-shadow property, you can generate a text shadow directly with our [CSS Text Shadow Generator](#).

Here you see how black text with a 4 pixel #B48878 colored shadow looks like.

```
.shadow{ text-shadow: 4px 4px 2px #B48878
}
```

Border

The CSS property to change the border of an element to Decimal 11831416 is called "border". The border property can be set on classes, ids or directly on the HTML element.

This example shows the color as border, it can be applied via the CSS property "border" or "border-color".

```
.border, #border, table{ border:4px solid
#B48878 }
```

If only the border color should be changed use the property `border-color`.

```
.border{ border-color:#B48878 }
```

If you want to add a box shadow in that color use:

Here you see how a box with a 4 pixel #B48878 colored shadow looks like.

```
.boxshadow{ -moz-box-shadow:4px 4px 4px  
4px #B48878; -webkit-box-shadow:4px 4px  
4px 4px #B48878; box-shadow:4px 4px 4px  
4px #B48878 }
```

Background

The CSS property to change the background color of an element to Decimal 11831416 is called "background". The background property can be set on classes, ids or directly on the HTML element.

```
.background, #background, body{  
background:#B48878 }
```

If only the background color should be changed can be used:

```
.background{ background-color:#B48878 }
```

This example shows the color as background, it is applied via the CSS property "background".

To optimize and compress your CSS code, you can use our [online CSS compressor and optimizer](#) based on csstidy. If you want to create a linear or radial gradient as background or border, check our [CSS Gradient Generator](#).

Hey! You found this booklet interesting? Support Converting Colors with the new Membership Option!

The pro membership hides all ads, plus gives you double the colors in the color bucket, and more awesome pro features!

[Learn more, Memberships starting at \\$2.50/m!](#)

**Follow me
on Twitter!**

@ConvertingColor