

Converting Colors

Decimal(11831648)

Have a look what the booklet for
Decimal(11831648) contains.

Decimal(11831648)	3
<i>Conversions</i>	4
<i>Details</i>	6
<i>Harmonies</i>	11
<i>Previews</i>	23
<i>Color Blindness Simulation</i>	26
<i>CSS Examples</i>	29

Color

Decimal(11831648)

Conversions

Conversions Part 1

Format	Color
Hex	B48960
RGB	180, 137, 96
RGB Percent	71%, 54%, 38%
CMY	0.2941, 0.4627, 0.6235
CMYK	0.00, 0.24, 0.47, 0.29
HSL	29°, 36%, 54%
HSV	29°, 47%, 71%
XYZ	29.8794, 28.4391, 14.9808
YIQ	145.1830, 38.7890, -3.6350

Conversions

Conversions Part 2

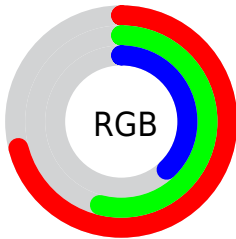
Format	Color
R_YB	180, 176, 96
Decimal	11831648
CIE Lab	60.28, 11.17, 28.27
CIE LCh	60, 30.399, 68.447
Yxy	28.4391, 0.4076, 0.3880
Android (android.graphics.Color)	4290021728 (0xFFB48960)
YUV	145.1830, -24.2472, 30.5345
Hunter-Lab	53.3284, 6.6872, 20.6743

Details

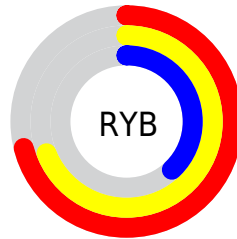
The Decimal color **11831648** is a dark color, and the websafe version is hex **CC9966**. A complement of this color would be **6327220**, and the grayscale version is **9539985**.

A 20% lighter version of the original color is **15646355**, and **8214321** is the 20% darker color. If you saturate the color by 10%, you get **11829326**, and if you desaturate by 10%, it is **11833970**.

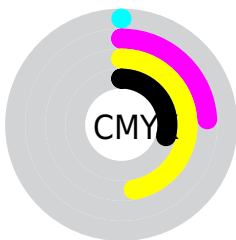
Distribution



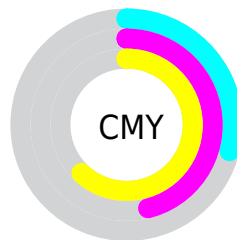
- Red (71%)
- Green (54%)
- Blue (38%)



- Red (71%)
- Yellow (69%)
- Blue (38%)



- Cyan (0%)
- Magenta (24%)
- Yellow (47%)
- Black (29%)



- Cyan (29%)
- Magenta (46%)
- Yellow (62%)

Brightness & Saturation Gradients

These gradients show how the Decimal color 11831648 changes by changing the brightness by 10 percent. The first figure shows a shift by +10% for each color and the second figure -10%.

Similar to the brightness gradients but the following saturation gradients show a change of the Decimal color 11831648 by changing the saturation by 10% instead.

 11831648

 11831648

16777215

 9990216

 15646355

 8214321

 16767662

 6438939

 16775113

 4794882

 16777190

 3151104

 1572864

 0

 11831648

 11831648

 11829326

 11833970

■ 11827004

■ 11836292

■ 11824426

■ 11838870

■ 11822104

■ 11841192

■ 11819782

■ 11843514

■ 11819008

■ 11845836

■ 11848414

■ 11850736

■ 11853055

Harmonies

Analogous

The Analogous color harmony consists of three colors that are next to each other on the color wheel.



12812657



11831648



10261084

Triad

The Triadic color harmony groups three colors that are evenly spaced from another and form a triangle on the color wheel.



11831648



4169880



10455227

Complementary

The Complementary color scheme is a pair of colors which are on the opposite of each other on the color wheel.



11831648



6327220

Split Complementary

Split-complementary colors differ from the complementary color scheme. The scheme consists of three colors, the original color and two neighbors of the complement color.



7901638



11831648



3251890

Square

The Square scheme is like the rectangle color scheme, but the four colors are evenly spaced on the color wheel.



11831648



6266493



5151170



12157094

Rectangle

The Rectangle color scheme consists of four colors that form a rectangle on the color wheel.



11831648



9017185



5151170



9669568

Sweetspot

The Sweet Spot groups the original color and five complimentary colors.



11831648



15456970



11821195



7695201



16119285



7697781

Same Dimension

The Same Dimension uses a secret algorithm to generate beautiful new colors.



11831648



15443815



11842400



5854544



10046208



1707008

Inverse Universe

The Inverse Universe completely reimagines the original color for something new.



6327220



6793963



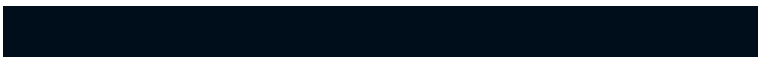
6316468



5264729



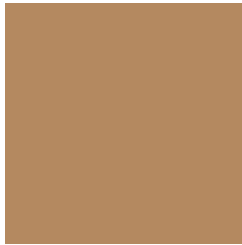
20121



3354

Previews

White Background



This preview shows how the Decimal color 11831648 looks on a white background.

Color Contrast Check

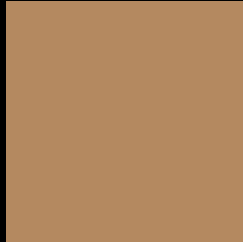
Large Text (above 18pt) WCAG AA ✓ Pass

Any Text WCAG AA × Fail

Large Text (above 18pt) WCAG AAA × Fail

Any Text WCAG AAA × Fail

Black Background



This preview shows how the Decimal color 11831648 looks on a black background.

Color Contrast Check

Large Text (above 18pt) WCAG AA ✓ Pass

Any Text WCAG AA ✓ Pass

Large Text (above 18pt) WCAG AAA ✓ Pass

Any Text WCAG AAA × Fail

If you want to check with other color combinations, try the [Color Contrast Checker](#).

Decimal 11831648 Background



This preview shows how black text looks on a background with the Decimal color 11831648.



This preview shows how white text looks on a background with the Decimal color 11831648.

Color Blindness Simulation

Color vision deficiency is a very complex topic, and I could not describe the different causes any better than Wikipedia does, so if you want to learn more, you should check out their [article about color blindness](#).

Dichromacy





Tritanopia
12092301

Trichromacy



Original Color
11831648

Protanomaly
10915682

Deuteranomaly
11635296

Tritanomaly
12027261

Monochromacy



Original Color
11831648

Achromatopsia
9539985

Achromatomaly
10391167

CSS Examples

Text

The CSS property to change the color of the text to Decimal 11831648 is called "color". The color property can be set on classes, ids or directly on the HTML element.

This example shows how text in the color #B48960 looks like.

```
.text, #text, p{  
    color:#B48960  
}
```

If you want to add a text shadow in that color use the text-shadow property, you can generate a text shadow directly with our [CSS Text Shadow Generator](#).

Here you see how black text with a 4 pixel #B48960 colored shadow looks like.

```
.shadow{ text-shadow: 4px 4px 2px #B48960
}
```

Border

The CSS property to change the border of an element to Decimal 11831648 is called "border". The border property can be set on classes, ids or directly on the HTML element.

This example shows the color as border, it can be applied via the CSS property "border" or "border-color".

```
.border, #border, table{ border:4px solid
#B48960 }
```

If only the border color should be changed use the property `border-color`.

```
.border{ border-color:#B48960 }
```

If you want to add a box shadow in that color use:

Here you see how a box with a 4 pixel #B48960 colored shadow looks like.

```
.boxshadow{ -moz-box-shadow:4px 4px 4px  
4px #B48960; -webkit-box-shadow:4px 4px  
4px 4px #B48960; box-shadow:4px 4px 4px  
4px #B48960 }
```

Background

The CSS property to change the background color of an element to Decimal 11831648 is called "background". The background property can be set on classes, ids or directly on the HTML element.

```
.background, #background, body{  
background:#B48960 }
```

If only the background color should be changed can be used:

```
.background{ background-color:#B48960 }
```

This example shows the color as background, it is applied via the CSS property "background".

To optimize and compress your CSS code, you can use our [online CSS compressor and optimizer](#) based on csstidy. If you want to create a linear or radial gradient as background or border, check our [CSS Gradient Generator](#).

Hey! You found this booklet interesting? Support Converting Colors with the new Membership Option!

The pro membership hides all ads, plus gives you double the colors in the color bucket, and more awesome pro features!

[Learn more, Memberships starting at \\$2.50/m!](#)

**Follow me
on Twitter!**

@ConvertingColor