

Converting Colors

Decimal(11831681)

Have a look what the booklet for
Decimal(11831681) contains.

Decimal(11831681)	3
<i>Conversions</i>	4
<i>Details</i>	6
<i>Harmonies</i>	11
<i>Previews</i>	23
<i>Color Blindness Simulation</i>	26
<i>CSS Examples</i>	29

Color

Decimal(11831681)

Conversions

Conversions Part 1

Format	Color
Hex	B48981
RGB	180, 137, 129
RGB Percent	71%, 54%, 51%
CMY	0.2941, 0.4627, 0.4941
CMYK	0.00, 0.24, 0.28, 0.29
HSL	9°, 25%, 61%
HSV	9°, 28%, 71%
XYZ	31.7305, 29.1796, 24.7287
YIQ	148.9450, 28.1960, 6.6280

Conversions

Conversions Part 2

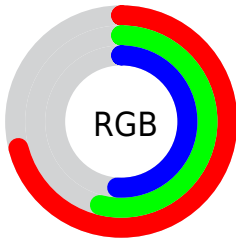
Format	Color
RYB	180, 138, 129
Decimal	11831681
CIELab	60.94, 15.22, 10.63
CIElCh	61, 18.565, 34.936
Yxy	29.1796, 0.3705, 0.3407
Android (android.graphics.Color)	4290021761 (0xFFB48981)
YUV	148.9450, -9.8329, 27.2352
Hunter-Lab	54.0181, 10.3199, 10.6706

Details

The Decimal color **11831681** is a light color, and the websafe version is hex **CC9999**. A complement of this color would be **8498356**, and the grayscale version is **9803157**.

A 20% lighter version of the original color is **15581110**, and **8279888** is the 20% darker color. If you saturate the color by 10%, you get **11827823**, and if you desaturate by 10%, it is **11835539**.

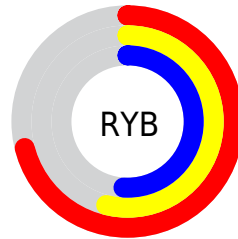
Distribution



Red (71%)

Green (54%)

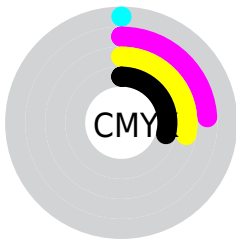
Blue (51%)



Red (71%)

Yellow (54%)

Blue (51%)

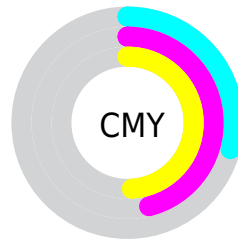


Cyan (0%)

Magenta (24%)

Yellow (28%)

Black (29%)



Cyan (29%)

Magenta (46%)

Yellow (49%)

Brightness & Saturation Gradients

These gradients show how the Decimal color 11831681 changes by changing the brightness by 10 percent. The first figure shows a shift by +10% for each color and the second figure -10%.

Similar to the brightness gradients but the following saturation gradients show a change of the Decimal color 11831681 by changing the saturation by 10% instead.

 11831681

 11831681

16777215

 10055528

 15581110

 8279888

 16767697

 6569785

 16775150

 4925731

 3347470

 2031616

 0

 11831681

 11831681

 11827823

 11835539

 11823965

 11839397

 11819851

 11843511

 11815993

 11847369

 11812135

 11851227

 11808277

 11855085

 11804419

 11858943

 11803648

 11862015

Harmonies

Analogous

The Analogous color harmony consists of three colors that are next to each other on the color wheel.



11831185



11831681



11308406

Triad

The Triadic color harmony groups three colors that are evenly spaced from another and form a triangle on the color wheel.



11831681



7904133



8688819

Complementary

The Complementary color scheme is a pair of colors which are on the opposite of each other on the color wheel.



11831681



8498356

Split Complementary

Split-complementary colors differ from the complementary color scheme. The scheme consists of three colors, the original color and two neighbors of the complement color.



7379120



11831681



6986901

Square

The Square scheme is like the rectangle color scheme, but the four colors are evenly spaced on the color wheel.



11831681



9148536



6724773



10063534

Rectangle

The Rectangle color scheme consists of four colors that form a rectangle on the color wheel.



11831681



10654067



6724773



8164787

Sweetspot

The Sweet Spot groups the original color and five complimentary colors.



11831681



15456725



11829676



7694952



16119285



7697781

Same Dimension

The Same Dimension uses a secret algorithm to generate beautiful new colors.



11831681



15443867



11838081



5853776



10033152



1704960

Inverse Universe

The Inverse Universe completely reimagines the original color for something new.



8498356



10215147



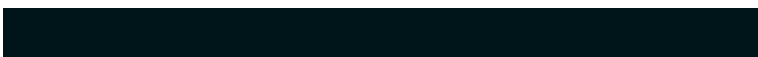
8491956



5265497



33177



5402

Previews

White Background



This preview shows how the Decimal color 11831681 looks on a white background.

Color Contrast Check

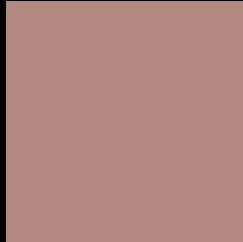
Large Text (above 18pt) WCAG AA ✓ Pass

Any Text WCAG AA × Fail

Large Text (above 18pt) WCAG AAA × Fail

Any Text WCAG AAA × Fail

Black Background



This preview shows how the Decimal color 11831681 looks on a black background.

Color Contrast Check

Large Text (above 18pt) WCAG AA ✓ Pass

Any Text WCAG AA ✓ Pass

Large Text (above 18pt) WCAG AAA ✓ Pass

Any Text WCAG AAA × Fail

If you want to check with other color combinations, try the [Color Contrast Checker](#).

Decimal 11831681 Background



This preview shows how black text looks on a background with the Decimal color 11831681.




This preview shows how white text looks on a background with the Decimal color 11831681.

Color Blindness Simulation

Color vision deficiency is a very complex topic, and I could not describe the different causes any better than Wikipedia does, so if you want to learn more, you should check out their [article about color blindness](#).

Dichromacy





Tritanopia
11962257

Trichromacy



Original Color
11831681

Protanomaly
10719108

Deuteranomaly
11308160

Tritanomaly
11896971

Monochromacy



Original Color
11831681

Achromatopsia
9803157

Achromatomaly
10523022

CSS Examples

Text

The CSS property to change the color of the text to Decimal 11831681 is called "color". The color property can be set on classes, ids or directly on the HTML element.

This example shows how text in the color #B48981 looks like.

```
.text, #text, p{  
    color:#B48981  
}
```

If you want to add a text shadow in that color use the text-shadow property, you can generate a text shadow directly with our [CSS Text Shadow Generator](#).

Here you see how black text with a 4 pixel #B48981 colored shadow looks like.

```
.shadow{ text-shadow: 4px 4px 2px #B48981
}
```

Border

The CSS property to change the border of an element to Decimal 11831681 is called "border". The border property can be set on classes, ids or directly on the HTML element.

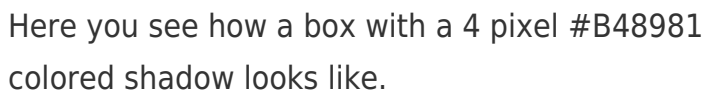
This example shows the color as border, it can be applied via the CSS property "border" or "border-color".

```
.border, #border, table{ border:4px solid
#B48981 }
```

If only the border color should be changed use the property `border-color`.

```
.border{ border-color:#B48981 }
```

If you want to add a box shadow in that color use:



Here you see how a box with a 4 pixel #B48981 colored shadow looks like.

```
.boxshadow{ -moz-box-shadow:4px 4px 4px  
4px #B48981; -webkit-box-shadow:4px 4px  
4px 4px #B48981; box-shadow:4px 4px 4px  
4px #B48981 }
```

Background

The CSS property to change the background color of an element to Decimal 11831681 is called "background". The background property can be set on classes, ids or directly on the HTML element.

```
.background, #background, body{  
background:#B48981 }
```

If only the background color should be changed can be used:

```
.background{ background-color:#B48981 }
```

This example shows the color as background, it is applied via the CSS property "background".

To optimize and compress your CSS code, you can use our [online CSS compressor and optimizer](#) based on csstidy. If you want to create a linear or radial gradient as background or border, check our [CSS Gradient Generator](#).

Hey! You found this booklet interesting? Support Converting Colors with the new Membership Option!

The pro membership hides all ads, plus gives you double the colors in the color bucket, and more awesome pro features!

[Learn more, Memberships starting at \\$2.50/m!](#)

**Follow me
on Twitter!**

@ConvertingColor