

Converting Colors

Decimal(11832189)

Have a look what the booklet for
Decimal(11832189) contains.

Decimal(11832189)	3
<i>Conversions</i>	4
<i>Details</i>	6
<i>Harmonies</i>	11
<i>Previews</i>	23
<i>Color Blindness Simulation</i>	26
<i>CSS Examples</i>	29

Color

Decimal(11832189)

Conversions

Conversions Part 1

Format	Color
Hex	B48B7D
RGB	180, 139, 125
RGB Percent	71%, 55%, 49%
CMY	0.2941, 0.4549, 0.5098
CMYK	0.00, 0.23, 0.31, 0.29
HSL	15°, 27%, 60%
HSV	15°, 31%, 71%
XYZ	31.7567, 29.6492, 23.4511
YIQ	149.6630, 28.9300, 4.3380

Conversions

Conversions Part 2

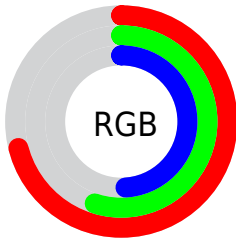
Format	Color
R_{YB}	180, 144, 125
Decimal	11832189
CIE Lab	61.35, 13.54, 13.48
CIE LCh	61, 19.108, 44.858
Yxy	29.6492, 0.3742, 0.3494
Android (android.graphics.Color)	4290022269 (0xFFB48B7D)
YUV	149.6630, -12.1589, 26.6055
Hunter-Lab	54.4511, 8.8145, 12.5806

Details

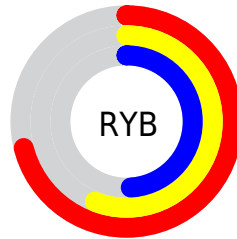
The Decimal color **11832189** is a dark color, and the websafe version is hex **CC9999**. A complement of this color would be **8234676**, and the grayscale version is **9868950**.

A 20% lighter version of the original color is **15581618**, and **8280396** is the 20% darker color. If you saturate the color by 10%, you get **11828843**, and if you desaturate by 10%, it is **11835535**.

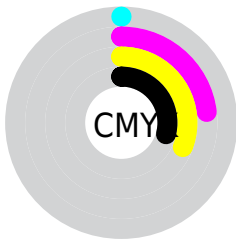
Distribution



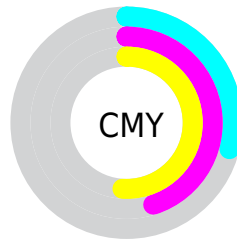
- Red (71%)
- Green (55%)
- Blue (49%)



- Red (71%)
- Yellow (56%)
- Blue (49%)



- Cyan (0%)
- Magenta (23%)
- Yellow (31%)
- Black (29%)



- Cyan (29%)
- Magenta (45%)
- Yellow (51%)

Brightness & Saturation Gradients

These gradients show how the Decimal color 11832189 changes by changing the brightness by 10 percent. The first figure shows a shift by +10% for each color and the second figure -10%.

Similar to the brightness gradients but the following saturation gradients show a change of the Decimal color 11832189 by changing the saturation by 10% instead.

 11832189

 11832189

16777215

 10056036

 15581618

 8280396

 16768461

 6570293

 16775657

 4926240

 3347977

 1966080

 0

 11832189

 11832189

 11828843

 11835535

 11825241

 11839137

 11821895

 11842483

 11818293

 11846085

 11814947

 11849431

 11811345

 11853033

 11808256

 11856379

 11859711

 11862015

Harmonies

Analogous

The Analogous color harmony consists of three colors that are next to each other on the color wheel.



12028044



11832189



11112564

Triad

The Triadic color harmony groups three colors that are evenly spaced from another and form a triangle on the color wheel.



11832189



7576971



9212853

Complementary

The Complementary color scheme is a pair of colors which are on the opposite of each other on the color wheel.



11832189



8234676

Split Complementary

Split-complementary colors differ from the complementary color scheme. The scheme consists of three colors, the original color and two neighbors of the complement color.



7772340



11832189



6790812

Square

The Square scheme is like the rectangle color scheme, but the four colors are evenly spaced on the color wheel.



11832189



8755836



6790315



10587564

Rectangle

The Rectangle color scheme consists of four colors that form a rectangle on the color wheel.



11832189



10392691



6790315



8689077

Sweetspot

The Sweet Spot groups the original color and five complimentary colors.



11832189



15457237



11828646



7695464



16119285



7697781

Same Dimension

The Same Dimension uses a secret algorithm to generate beautiful new colors.



11832189



15444628



11839101



5854032



10036992



1705472

Inverse Universe

The Inverse Universe completely reimagines the original color for something new.



8234676



9754091



8227764



5265241



29337



4890

Previews

White Background



This preview shows how the Decimal color 11832189 looks on a white background.

Color Contrast Check

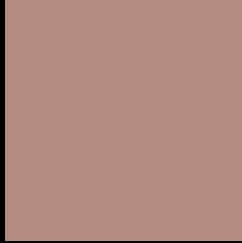
Large Text (above 18pt) WCAG AA ✓ Pass

Any Text WCAG AA × Fail

Large Text (above 18pt) WCAG AAA × Fail

Any Text WCAG AAA × Fail

Black Background



This preview shows how the Decimal color 11832189 looks on a black background.

Color Contrast Check

Large Text (above 18pt) WCAG AA ✓ Pass

Any Text WCAG AA ✓ Pass

Large Text (above 18pt) WCAG AAA ✓ Pass

Any Text WCAG AAA × Fail

If you want to check with other color combinations, try the [Color Contrast Checker](#).

Decimal 11832189 Background



This preview shows how black text looks on a background with the Decimal color 11832189.




This preview shows how white text looks on a background with the Decimal color 11832189.

Color Blindness Simulation

Color vision deficiency is a very complex topic, and I could not describe the different causes any better than Wikipedia does, so if you want to learn more, you should check out their [article about color blindness](#).

Dichromacy





Tritanopia
11962514

Trichromacy



Original Color
11832189

Protanomaly
10785152

Deuteranomaly
11439740

Tritanomaly
11897226

Monochromacy



Original Color
11832189

Achromatopsia
9868950

Achromatomaly
10588813

CSS Examples

Text

The CSS property to change the color of the text to Decimal 11832189 is called "color". The color property can be set on classes, ids or directly on the HTML element.

This example shows how text in the color #B48B7D looks like.

```
.text, #text, p{  
    color:#B48B7D  
}
```

If you want to add a text shadow in that color use the text-shadow property, you can generate a text shadow directly with our [CSS Text Shadow Generator](#).

Here you see how black text with a 4 pixel #B48B7D colored shadow looks like.

```
.shadow{ text-shadow: 4px 4px 2px #B48B7D
}
```

Border

The CSS property to change the border of an element to Decimal 11832189 is called "border". The border property can be set on classes, ids or directly on the HTML element.

This example shows the color as border, it can be applied via the CSS property "border" or "border-color".

```
.border, #border, table{ border:4px solid
#B48B7D }
```

If only the border color should be changed use the property `border-color`.

```
.border{ border-color:#B48B7D }
```

If you want to add a box shadow in that color use:

Here you see how a box with a 4 pixel #B48B7D colored shadow looks like.

```
.boxshadow{ -moz-box-shadow:4px 4px 4px  
4px #B48B7D; -webkit-box-shadow:4px 4px  
4px 4px #B48B7D; box-shadow:4px 4px 4px  
4px #B48B7D }
```

Background

The CSS property to change the background color of an element to Decimal 11832189 is called "background". The background property can be set on classes, ids or directly on the HTML element.

```
.background, #background, body{  
background:#B48B7D }
```

If only the background color should be changed can be used:

```
.background{ background-color:#B48B7D }
```

This example shows the color as background, it is applied via the CSS property "background".

To optimize and compress your CSS code, you can use our [online CSS compressor and optimizer](#) based on csstidy. If you want to create a linear or radial gradient as background or border, check our [CSS Gradient Generator](#).

Hey! You found this booklet interesting? Support Converting Colors with the new Membership Option!

The pro membership hides all ads, plus gives you double the colors in the color bucket, and more awesome pro features!

[Learn more, Memberships starting at \\$2.50/m!](#)

**Follow me
on Twitter!**

@ConvertingColor