

Converting Colors

Decimal(11832460)

Have a look what the booklet for
Decimal(11832460) contains.

Decimal(11832460)	3
<i>Conversions</i>	4
<i>Details</i>	6
<i>Harmonies</i>	11
<i>Previews</i>	23
<i>Color Blindness Simulation</i>	26
<i>CSS Examples</i>	29

Color

Decimal(11832460)

Conversions

Conversions Part 1

Format	Color
Hex	B48C8C
RGB	180, 140, 140
RGB Percent	71%, 55%, 55%
CMY	0.2941, 0.4510, 0.4510
CMYK	0.00, 0.22, 0.22, 0.29
HSL	0°, 21%, 63%
HSV	0°, 22%, 71%
XYZ	32.9341, 30.3529, 28.9338
YIQ	151.9600, 23.8400, 8.4800

Conversions

Conversions Part 2

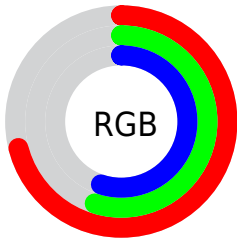
Format	Color
R _Y B	180, 140, 140
Decimal	11832460
CIE Lab	61.96, 15.16, 5.83
CIE LCh	62, 16.245, 21.024
Yxy	30.3529, 0.3571, 0.3291
Android (android.graphics.Color)	4290022540 (0xFFB48C8C)
YUV	151.9600, -5.8963, 24.5911
Hunter-Lab	55.0935, 10.2912, 7.4277

Details

The Decimal color **11832460** is a light color, and the websafe version is hex **CC9999**. A complement of this color would be **9221300**, and the grayscale version is **10000536**.

A 20% lighter version of the original color is **15516353**, and **8280666** is the 20% darker color. If you saturate the color by 10%, you get **11827834**, and if you desaturate by 10%, it is **11837086**.

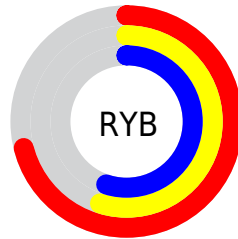
Distribution



Red (71%)

Green (55%)

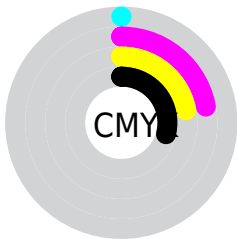
Blue (55%)



Red (71%)

Yellow (55%)

Blue (55%)

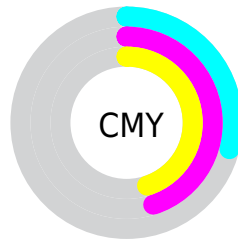


Cyan (0%)

Magenta (22%)

Yellow (22%)

Black (29%)



Cyan (29%)

Magenta (45%)

Yellow (45%)

Brightness & Saturation Gradients

These gradients show how the Decimal color 11832460 changes by changing the brightness by 10 percent. The first figure shows a shift by +10% for each color and the second figure -10%.

Similar to the brightness gradients but the following saturation gradients show a change of the Decimal color 11832460 by changing the saturation by 10% instead.

 11832460

 11832460

16777215

 10056307

 15516353

 8280666

 16768733

 6636099

 16775930

 4992045


 3413528

 2162688

 0

 11832460

 11832460

 11827834

 11837086

 11823208

 11841712

 11818582

 11846338

 11813956

 11850964

 11809330

 11855590

 11804704

 11860216

 11800078

 11862015

 11796480

Harmonies

Analogous

The Analogous color harmony consists of three colors that are next to each other on the color wheel.



11570331



11832460



11571072

Triad

The Triadic color harmony groups three colors that are evenly spaced from another and form a triangle on the color wheel.



11832460



8821891



8427698

Complementary

The Complementary color scheme is a pair of colors which are on the opposite of each other on the color wheel.



11832460



9221300

Split Complementary

Split-complementary colors differ from the complementary color scheme. The scheme consists of three colors, the original color and two neighbors of the complement color.



7576748



11832460



7839377

Square

The Square scheme is like the rectangle color scheme, but the four colors are evenly spaced on the color wheel.



11832460



9869435



7315103



9671600

Rectangle

The Rectangle color scheme consists of four colors that form a rectangle on the color wheel.



11832460



11113083



7315103



8100528

Sweetspot

The Sweet Spot groups the original color and five complimentary colors.



11832460



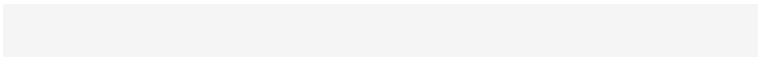
15456986



11832500



7695468



16119285



7697781

Same Dimension

The Same Dimension uses a secret algorithm to generate beautiful new colors.



11832460



15444907



11837580



5853264



10027008



1703936

Inverse Universe

The Inverse Universe completely reimagines the original color for something new.



9221300



11267051



9216180



5265753



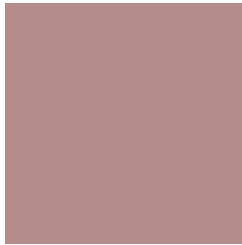
39321



6682

Previews

White Background



This preview shows how the Decimal color 11832460 looks on a white background.

Color Contrast Check

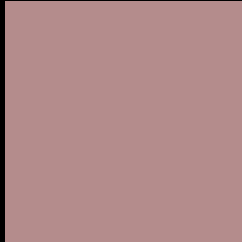
Large Text (above 18pt) WCAG AA × Fail

Any Text WCAG AA × Fail

Large Text (above 18pt) WCAG AAA × Fail

Any Text WCAG AAA × Fail

Black Background



This preview shows how the Decimal color 11832460 looks on a black background.

Color Contrast Check

Large Text (above 18pt) WCAG AA ✓ Pass

Any Text WCAG AA ✓ Pass

Large Text (above 18pt) WCAG AAA ✓ Pass

Any Text WCAG AAA ✓ Pass

If you want to check with other color combinations, try the [Color Contrast Checker](#).

Decimal 11832460 Background



This preview shows how black text looks on a background with the Decimal color 11832460.



This preview shows how white text looks on a background with the Decimal color 11832460.

Color Blindness Simulation

Color vision deficiency is a very complex topic, and I could not describe the different causes any better than Wikipedia does, so if you want to learn more, you should check out their [article about color blindness](#).

Dichromacy





Tritanopia
11897749

Trichromacy



Original Color
11832460

Protanomaly
10719887

Deuteranomaly
11308939

Tritanomaly
11897746

Monochromacy



Original Color
11832460

Achromatopsia
10000536

Achromatomaly
10654868

CSS Examples

Text

The CSS property to change the color of the text to Decimal 11832460 is called "color". The color property can be set on classes, ids or directly on the HTML element.

This example shows how text in the color #B48C8C looks like.

```
.text, #text, p{  
  color:#B48C8C  
}
```

If you want to add a text shadow in that color use the text-shadow property, you can generate a text shadow directly with our [CSS Text Shadow Generator](#).

Here you see how black text with a 4 pixel #B48C8C colored shadow looks like.

```
.shadow{ text-shadow: 4px 4px 2px #B48C8C
}
```

Border

The CSS property to change the border of an element to Decimal 11832460 is called "border". The border property can be set on classes, ids or directly on the HTML element.

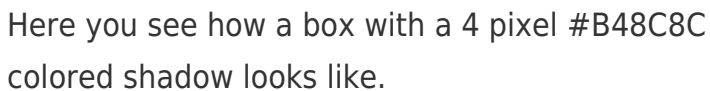
This example shows the color as border, it can be applied via the CSS property "border" or "border-color".

```
.border, #border, table{ border:4px solid
#B48C8C }
```

If only the border color should be changed use the property `border-color`.

```
.border{ border-color:#B48C8C }
```

If you want to add a box shadow in that color use:



Here you see how a box with a 4 pixel #B48C8C colored shadow looks like.

```
.boxshadow{ -moz-box-shadow:4px 4px 4px  
4px #B48C8C; -webkit-box-shadow:4px 4px  
4px 4px #B48C8C; box-shadow:4px 4px 4px  
4px #B48C8C }
```

Background

The CSS property to change the background color of an element to Decimal 11832460 is called "background". The background property can be set on classes, ids or directly on the HTML element.

```
.background, #background, body{  
background:#B48C8C }
```

If only the background color should be changed can be used:

```
.background{ background-color:#B48C8C }
```

This example shows the color as background, it is applied via the CSS property "background".

To optimize and compress your CSS code, you can use our [online CSS compressor and optimizer](#) based on csstidy. If you want to create a linear or radial gradient as background or border, check our [CSS Gradient Generator](#).

Hey! You found this booklet interesting? Support Converting Colors with the new Membership Option!

The pro membership hides all ads, plus gives you double the colors in the color bucket, and more awesome pro features!

[Learn more, Memberships starting at \\$2.50/m!](#)

**Follow me
on Twitter!**

@ConvertingColor