

Converting Colors

Decimal(11832691)

Have a look what the booklet for
Decimal(11832691) contains.

Decimal(11832691)	3
<i>Conversions</i>	4
<i>Details</i>	6
<i>Harmonies</i>	11
<i>Previews</i>	23
<i>Color Blindness Simulation</i>	26
<i>CSS Examples</i>	29

Color

Decimal(11832691)

Conversions

Conversions Part 1

Format	Color
Hex	B48D73
RGB	180, 141, 115
RGB Percent	71%, 55%, 45%
CMY	0.2941, 0.4471, 0.5490
CMYK	0.00, 0.22, 0.36, 0.29
HSL	24°, 30%, 58%
HSV	24°, 36%, 71%
XYZ	31.4418, 29.9909, 20.3513
YIQ	149.6970, 31.5900, 0.1820

Conversions

Conversions Part 2

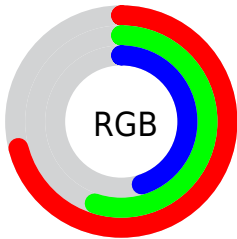
Format	Color
RYB	180, 158, 115
Decimal	11832691
CIELab	61.65, 11.12, 19.52
CIElCh	62, 22.466, 60.337
Yxy	29.9909, 0.3844, 0.3667
Android (android.graphics.Color)	4290022771 (0xFFB48D73)
YUV	149.6970, -17.1056, 26.5757
Hunter-Lab	54.7639, 6.6459, 16.3014

Details

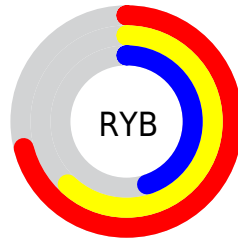
The Decimal color **11832691** is a dark color, and the websafe version is hex **CC9966**. A complement of this color would be **7576244**, and the grayscale version is **9868950**.

A 20% lighter version of the original color is **15582119**, and **8280899** is the 20% darker color. If you saturate the color by 10%, you get **11829857**, and if you desaturate by 10%, it is **11835525**.

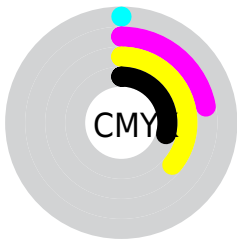
Distribution



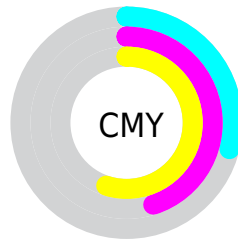
- Red (71%)
- Green (55%)
- Blue (45%)



- Red (71%)
- Yellow (62%)
- Blue (45%)



- Cyan (0%)
- Magenta (22%)
- Yellow (36%)
- Black (29%)



- Cyan (29%)
- Magenta (45%)
- Yellow (55%)

Brightness & Saturation Gradients

These gradients show how the Decimal color 11832691 changes by changing the brightness by 10 percent. The first figure shows a shift by +10% for each color and the second figure -10%.

Similar to the brightness gradients but the following saturation gradients show a change of the Decimal color 11832691 by changing the saturation by 10% instead.

 11832691

 11832691

16777215

 10056538

 15582119

 8280899

 16768962

 6570796

 16776158

 4926743

 16777211

 3348480

 1835008

 0

 11832691

 11832691

 11829857

 11835525

11827023

11838359

11824445

11840937

11821611

11843771

11818777

11846605

11815943

11849439

11814912

11852273

11854847

11857663

Harmonies

Analogous

The Analogous color harmony consists of three colors that are next to each other on the color wheel.



12421250



11832691



10720365

Triad

The Triadic color harmony groups three colors that are evenly spaced from another and form a triangle on the color wheel.



11832691



6529172



9998519

Complementary

The Complementary color scheme is a pair of colors which are on the opposite of each other on the color wheel.



11832691



7576244

Split Complementary

Split-complementary colors differ from the complementary color scheme. The scheme consists of three colors, the original color and two neighbors of the complement color.



8230844



11832691



6004648

Square

The Square scheme is like the rectangle color scheme, but the four colors are evenly spaced on the color wheel.



11832691



7839361



6593719



11504297

Rectangle

The Rectangle color scheme consists of four colors that form a rectangle on the color wheel.



11832691



9803887



6593719



9409210

Sweetspot

The Sweet Spot groups the original color and five complimentary colors.



11832691



15457233



11826074



7695462



16119285



7697781

Same Dimension

The Same Dimension uses a secret algorithm to generate beautiful new colors.



11832691



15445638



11841139



5854288



10042624



1706496

Inverse Universe

The Inverse Universe completely reimagines the original color for something new.



7576244



8831723



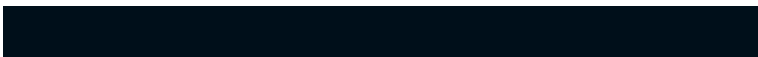
7567796



5264985



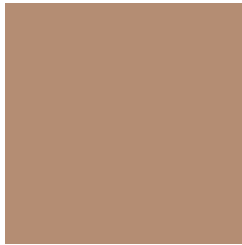
23705



3866

Previews

White Background



This preview shows how the Decimal color 11832691 looks on a white background.

Color Contrast Check

Large Text (above 18pt) WCAG AA ✓ Pass

Any Text WCAG AA × Fail

Large Text (above 18pt) WCAG AAA × Fail

Any Text WCAG AAA × Fail

Black Background



This preview shows how the Decimal color 11832691 looks on a black background.

Color Contrast Check

Large Text (above 18pt) WCAG AA ✓ Pass

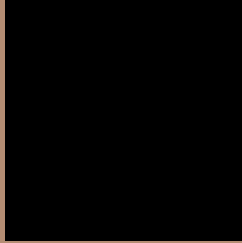
Any Text WCAG AA ✓ Pass

Large Text (above 18pt) WCAG AAA ✓ Pass

Any Text WCAG AAA ✓ Pass

If you want to check with other color combinations, try the [Color Contrast Checker](#).

Decimal 11832691 Background



This preview shows how black text looks on a background with the Decimal color 11832691.



This preview shows how white text looks on a background with the Decimal color 11832691.

Color Blindness Simulation

Color vision deficiency is a very complex topic, and I could not describe the different causes any better than Wikipedia does, so if you want to learn more, you should check out their [article about color blindness](#).

Dichromacy





Tritanopia
12028307

Trichromacy



Original Color
11832691

Protanomaly
10916470

Deuteranomaly
11636339

Tritanomaly
11963015

Monochromacy



Original Color
11832691

Achromatopsia
9868950

Achromatomaly
10589065

CSS Examples

Text

The CSS property to change the color of the text to Decimal 11832691 is called "color". The color property can be set on classes, ids or directly on the HTML element.

This example shows how text in the color #B48D73 looks like.

```
.text, #text, p{  
    color:#B48D73  
}
```

If you want to add a text shadow in that color use the text-shadow property, you can generate a text shadow directly with our [CSS Text Shadow Generator](#).

Here you see how black text with a 4 pixel #B48D73 colored shadow looks like.

```
.shadow{ text-shadow: 4px 4px 2px #B48D73  
}
```

Border

The CSS property to change the border of an element to Decimal 11832691 is called "border". The border property can be set on classes, ids or directly on the HTML element.

This example shows the color as border, it can be applied via the CSS property "border" or "border-color".

```
.border, #border, table{ border:4px solid  
#B48D73 }
```

If only the border color should be changed use the property `border-color`.

```
.border{ border-color:#B48D73 }
```

If you want to add a box shadow in that color use:

Here you see how a box with a 4 pixel #B48D73 colored shadow looks like.

```
.boxshadow{ -moz-box-shadow:4px 4px 4px  
4px #B48D73; -webkit-box-shadow:4px 4px  
4px 4px #B48D73; box-shadow:4px 4px 4px  
4px #B48D73 }
```

Background

The CSS property to change the background color of an element to Decimal 11832691 is called "background". The background property can be set on classes, ids or directly on the HTML element.

```
.background, #background, body{  
background:#B48D73 }
```

If only the background color should be changed can be used:

```
.background{ background-color:#B48D73 }
```

This example shows the color as background, it is applied via the CSS property "background".

To optimize and compress your CSS code, you can use our [online CSS compressor and optimizer](#) based on csstidy. If you want to create a linear or radial gradient as background or border, check our [CSS Gradient Generator](#).

Hey! You found this booklet interesting? Support Converting Colors with the new Membership Option!

The pro membership hides all ads, plus gives you double the colors in the color bucket, and more awesome pro features!

[Learn more, Memberships starting at \\$2.50/m!](#)

**Follow me
on Twitter!**

@ConvertingColor