

Converting Colors

Decimal(11832949)

Have a look what the booklet for
Decimal(11832949) contains.

Decimal(11832949)	3
<i>Conversions</i>	4
<i>Details</i>	6
<i>Harmonies</i>	11
<i>Previews</i>	23
<i>Color Blindness Simulation</i>	26
<i>CSS Examples</i>	29

Color

Decimal(11832949)

Conversions

Conversions Part 1

Format	Color
Hex	B48E75
RGB	180, 142, 117
RGB Percent	71%, 56%, 46%
CMY	0.2941, 0.4431, 0.5412
CMYK	0.00, 0.21, 0.35, 0.29
HSL	24°, 30%, 58%
HSV	24°, 35%, 71%
XYZ	31.7063, 30.3337, 21.0135
YIQ	150.5120, 30.6730, 0.2810

Conversions

Conversions Part 2

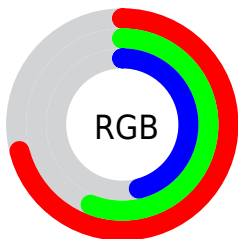
Format	Color
RYB	180, 158, 117
Decimal	11832949
CIELab	61.94, 10.82, 18.80
CIELCh	62, 21.691, 60.093
Yxy	30.3337, 0.3818, 0.3652
Android (android.graphics.Color)	4290023029 (0xFFB48E75)
YUV	150.5120, -16.5214, 25.8610
Hunter-Lab	55.0760, 6.3763, 15.9319

Details

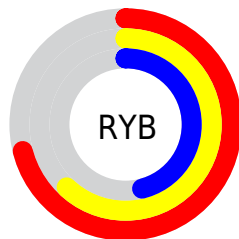
The Decimal color **11832949** is a dark color, and the websafe version is hex **CC9999**. A complement of this color would be **7707572**, and the grayscale version is **9934743**.

A 20% lighter version of the original color is **15582377**, and **8281157** is the 20% darker color. If you saturate the color by 10%, you get **11830115**, and if you desaturate by 10%, it is **11835783**.

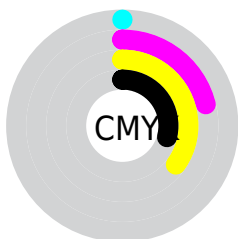
Distribution



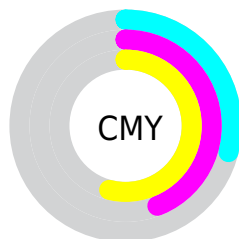
- Red (71%)
- Green (56%)
- Blue (46%)



- Red (71%)
- Yellow (62%)
- Blue (46%)



- Cyan (0%)
- Magenta (21%)
- Yellow (35%)
- Black (29%)



- Cyan (29%)
- Magenta (44%)
- Yellow (54%)

Brightness & Saturation Gradients

These gradients show how the Decimal color 11832949 changes by changing the brightness by 10 percent. The first figure shows a shift by +10% for each color and the second figure -10%.

Similar to the brightness gradients but the following saturation gradients show a change of the Decimal color 11832949 by changing the saturation by 10% instead.

 11832949

 11832949

16777215

 10056796

 15582377

 8281157

 16769220

 6571054

 16776416

 4927001

16777213

 3348736

 1835008

 0

 11832949

 11832949

 11830115

 11835783

■ 11827281

■ 11838617

■ 11824447

■ 11841451

■ 11821869

■ 11844029

■ 11819035

■ 11846863

■ 11816201

■ 11849697

■ 11814656

■ 11852531

■ 11855359

■ 11858175

Harmonies

Analogous

The Analogous color harmony consists of three colors that are next to each other on the color wheel.



12355971



11832949



10785903

Triad

The Triadic color harmony groups three colors that are evenly spaced from another and form a triangle on the color wheel.



11832949



6726037



10064311

Complementary

The Complementary color scheme is a pair of colors which are on the opposite of each other on the color wheel.



11832949



7707572

Split Complementary

Split-complementary colors differ from the complementary color scheme. The scheme consists of three colors, the original color and two neighbors of the complement color.



8296380



11832949



6201512

Square

The Square scheme is like the rectangle color scheme, but the four colors are evenly spaced on the color wheel.



11832949



7970690



6790582



11504553

Rectangle

The Rectangle color scheme consists of four colors that form a rectangle on the color wheel.



11832949



9869425



6790582



9475002

Sweetspot

The Sweet Spot groups the original color and five complimentary colors.



11832949



15457233



11826588



7695462



16119285



7697781

Same Dimension

The Same Dimension uses a secret algorithm to generate beautiful new colors.



11832949



15445896



11840885



5854288



10042624



1706496

Inverse Universe

The Inverse Universe completely reimagines the original color for something new.



7707572



8963307



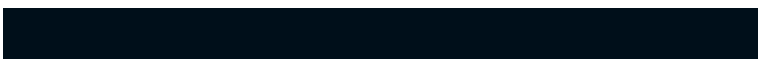
7699636



5264985



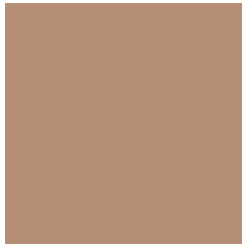
23705



3866

Previews

White Background



This preview shows how the Decimal color 11832949 looks on a white background.

Color Contrast Check

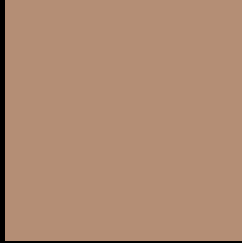
Large Text (above 18pt) WCAG AA × Fail

Any Text WCAG AA × Fail

Large Text (above 18pt) WCAG AAA × Fail

Any Text WCAG AAA × Fail

Black Background



This preview shows how the Decimal color 11832949 looks on a black background.

Color Contrast Check

Large Text (above 18pt) WCAG AA ✓ Pass

Any Text WCAG AA ✓ Pass

Large Text (above 18pt) WCAG AAA ✓ Pass

Any Text WCAG AAA ✓ Pass

If you want to check with other color combinations, try the [Color Contrast Checker](#).

Decimal 11832949 Background



This preview shows how black text looks on a background with the Decimal color 11832949.



This preview shows how white text looks on a background with the Decimal color 11832949.

Color Blindness Simulation

Color vision deficiency is a very complex topic, and I could not describe the different causes any better than Wikipedia does, so if you want to learn more, you should check out their [article about color blindness](#).

Dichromacy



Original Color
11832949

Protanopia
10458745

Deuteranopia
11571317



Tritanopia
12028564

Trichromacy



Original Color
11832949

Protanomaly
10982264

Deuteranomaly
11636597

Tritanomaly
11963273

Monochromacy



Original Color
11832949

Achromatopsia
9934743

Achromatomaly
10654859

CSS Examples

Text

The CSS property to change the color of the text to Decimal 11832949 is called "color". The color property can be set on classes, ids or directly on the HTML element.

This example shows how text in the color #B48E75 looks like.

```
.text, #text, p{  
    color:#B48E75  
}
```

If you want to add a text shadow in that color use the text-shadow property, you can generate a text shadow directly with our [CSS Text Shadow Generator](#).

Here you see how black text with a 4 pixel #B48E75 colored shadow looks like.

```
.shadow{ text-shadow: 4px 4px 2px #B48E75  
}
```

Border

The CSS property to change the border of an element to Decimal 11832949 is called "border". The border property can be set on classes, ids or directly on the HTML element.

This example shows the color as border, it can be applied via the CSS property "border" or "border-color".

```
.border, #border, table{ border:4px solid  
#B48E75 }
```

If only the border color should be changed use the property `border-color`.

```
.border{ border-color:#B48E75 }
```

If you want to add a box shadow in that color use:

Here you see how a box with a 4 pixel #B48E75 colored shadow looks like.

```
.boxshadow{ -moz-box-shadow:4px 4px 4px  
4px #B48E75; -webkit-box-shadow:4px 4px  
4px 4px #B48E75; box-shadow:4px 4px 4px  
4px #B48E75 }
```

Background

The CSS property to change the background color of an element to Decimal 11832949 is called "background". The background property can be set on classes, ids or directly on the HTML element.

```
.background, #background, body{  
background:#B48E75 }
```

If only the background color should be changed can be used:

```
.background{ background-color:#B48E75 }
```

This example shows the color as background, it is applied via the CSS property "background".

To optimize and compress your CSS code, you can use our [online CSS compressor and optimizer](#) based on csstidy. If you want to create a linear or radial gradient as background or border, check our [CSS Gradient Generator](#).

Hey! You found this booklet interesting? Support Converting Colors with the new Membership Option!

The pro membership hides all ads, plus gives you double the colors in the color bucket, and more awesome pro features!

[Learn more, Memberships starting at \\$2.50/m!](#)

**Follow me
on Twitter!**

@ConvertingColor