

Converting Colors

Decimal(11833709)

Have a look what the booklet for
Decimal(11833709) contains.

Decimal(11833709)	3
<i>Conversions</i>	4
<i>Details</i>	6
<i>Harmonies</i>	11
<i>Previews</i>	23
<i>Color Blindness Simulation</i>	26
<i>CSS Examples</i>	29

Color

Decimal(11833709)

Conversions

Conversions Part 1

Format	Color
Hex	B4916D
RGB	180, 145, 109
RGB Percent	71%, 57%, 43%
CMY	0.2941, 0.4314, 0.5725
CMYK	0.00, 0.19, 0.39, 0.29
HSL	30°, 32%, 57%
HSV	30°, 39%, 71%
XYZ	31.7081, 31.0582, 18.7916
YIQ	151.3610, 32.4160, -3.7760

Conversions

Conversions Part 2

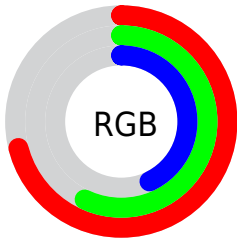
Format	Color
RYB	178, 180, 109
Decimal	11833709
CIELab	62.56, 8.17, 24.09
CIELCh	63, 25.438, 71.271
Yxy	31.0582, 0.3888, 0.3808
Android (android.graphics.Color)	4290023789 (0xFFB4916D)
YUV	151.3610, -20.8840, 25.1164
Hunter-Lab	55.7299, 4.0321, 19.0189

Details

The Decimal color **11833709** is a dark color, and the websafe version is hex **CC9966**. A complement of this color would be **7180468**, and the grayscale version is **10000536**.

A 20% lighter version of the original color is **15583137**, and **8281917** is the 20% darker color. If you saturate the color by 10%, you get **11831387**, and if you desaturate by 10%, it is **11836031**.

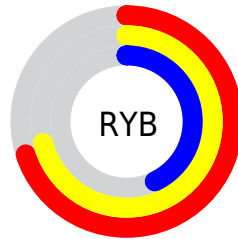
Distribution



Red (71%)

Green (57%)

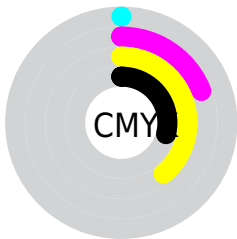
Blue (43%)



Red (70%)

Yellow (71%)

Blue (43%)

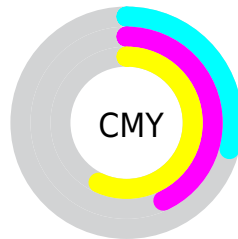


Cyan (0%)

Magenta (19%)

Yellow (39%)

Black (29%)



Cyan (29%)

Magenta (43%)

Yellow (57%)

Brightness & Saturation Gradients

These gradients show how the Decimal color 11833709 changes by changing the brightness by 10 percent. The first figure shows a shift by +10% for each color and the second figure -10%.

Similar to the brightness gradients but the following saturation gradients show a change of the Decimal color 11833709 by changing the saturation by 10% instead.



11833709



11833709

16777215



9992020



15583137



8281917



16769980



6571815



16777176



4862225



16777204



3349504



1770240



0



11833709



11833709



11831387



11836031

■ 11829065

■ 11838353

■ 11826743

■ 11840675

■ 11824677

■ 11842741

■ 11822355

■ 11845063

■ 11820033

■ 11847385

■ 11819776

■ 11849707

■ 11852029

■ 11854335

Harmonies

Analogous

The Analogous color harmony consists of three colors that are next to each other on the color wheel.



12749435



11833709



10459499

Triad

The Triadic color harmony groups three colors that are evenly spaced from another and form a triangle on the color wheel.



11833709



5743775



10850233

Complementary

The Complementary color scheme is a pair of colors which are on the opposite of each other on the color wheel.



11833709



7180468

Split Complementary

Split-complementary colors differ from the complementary color scheme. The scheme consists of three colors, the original color and two neighbors of the complement color.



8885955



11833709



5481140

Square

The Square scheme is like the rectangle color scheme, but the four colors are evenly spaced on the color wheel.



11833709



7119752



6790849



12290214

Rectangle

The Rectangle color scheme consists of four colors that form a rectangle on the color wheel.



11833709



9346416



6790849



10260926

Sweetspot

The Sweet Spot groups the original color and five complimentary colors.



11833709



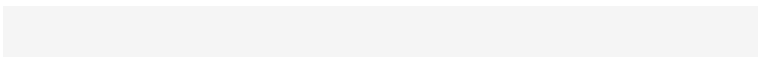
15457742



11824529



7695717



16119285



7697781

Same Dimension

The Same Dimension uses a secret algorithm to generate beautiful new colors.



11833709



15447164



11842669



5854544



10046976



1707264

Inverse Universe

The Inverse Universe completely reimagines the original color for something new.



7180468



8172523



7171508



5264729



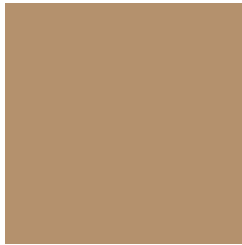
19353



3354

Previews

White Background



This preview shows how the Decimal color 11833709 looks on a white background.

Color Contrast Check

Large Text (above 18pt) WCAG AA × Fail

Any Text WCAG AA × Fail

Large Text (above 18pt) WCAG AAA × Fail

Any Text WCAG AAA × Fail

Black Background



This preview shows how the Decimal color 11833709 looks on a black background.

Color Contrast Check

Large Text (above 18pt) WCAG AA ✓ Pass

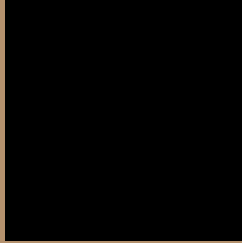
Any Text WCAG AA ✓ Pass

Large Text (above 18pt) WCAG AAA ✓ Pass

Any Text WCAG AAA ✓ Pass

If you want to check with other color combinations, try the [Color Contrast Checker](#).

Decimal 11833709 Background



This preview shows how black text looks on a background with the Decimal color 11833709.



This preview shows how white text looks on a background with the Decimal color 11833709.

Color Blindness Simulation

Color vision deficiency is a very complex topic, and I could not describe the different causes any better than Wikipedia does, so if you want to learn more, you should check out their [article about color blindness](#).


Dichromacy



Original Color
11833709

Protanopia
10721136

Deuteranopia
11833709



Tritanopia
12094614

Trichromacy



Original Color
11833709

Protanomaly
11113839

Deuteranomaly
11833709

Tritanomaly
12029575

Monochromacy



Original Color
11833709

Achromatopsia
9934743

Achromatomaly
10655112

CSS Examples

Text

The CSS property to change the color of the text to Decimal 11833709 is called "color". The color property can be set on classes, ids or directly on the HTML element.

This example shows how text in the color #B4916D looks like.

```
.text, #text, p{  
    color:#B4916D  
}
```

If you want to add a text shadow in that color use the text-shadow property, you can generate a text shadow directly with our [CSS Text Shadow Generator](#).

Here you see how black text with a 4 pixel #B4916D colored shadow looks like.

```
.shadow{ text-shadow: 4px 4px 2px #B4916D
}
```

Border

The CSS property to change the border of an element to Decimal 11833709 is called "border". The border property can be set on classes, ids or directly on the HTML element.

This example shows the color as border, it can be applied via the CSS property "border" or "border-color".

```
.border, #border, table{ border:4px solid
#B4916D }
```

If only the border color should be changed use the property `border-color`.

```
.border{ border-color:#B4916D }
```

If you want to add a box shadow in that color use:

Here you see how a box with a 4 pixel #B4916D colored shadow looks like.

```
.boxshadow{ -moz-box-shadow:4px 4px 4px  
4px #B4916D; -webkit-box-shadow:4px 4px  
4px 4px #B4916D; box-shadow:4px 4px 4px  
4px #B4916D }
```

Background

The CSS property to change the background color of an element to Decimal 11833709 is called "background". The background property can be set on classes, ids or directly on the HTML element.

```
.background, #background, body{  
background:#B4916D }
```

If only the background color should be changed can be used:

```
.background{ background-color:#B4916D }
```

This example shows the color as background, it is applied via the CSS property "background".

To optimize and compress your CSS code, you can use our [online CSS compressor and optimizer](#) based on csstidy. If you want to create a linear or radial gradient as background or border, check our [CSS Gradient Generator](#).

Hey! You found this booklet interesting? Support Converting Colors with the new Membership Option!

The pro membership hides all ads, plus gives you double the colors in the color bucket, and more awesome pro features!

[Learn more, Memberships starting at \\$2.50/m!](#)

**Follow me
on Twitter!**

@ConvertingColor