

Converting Colors

Decimal(11833751)

Have a look what the booklet for
Decimal(11833751) contains.

Decimal(11833751)	3
<i>Conversions</i>	4
<i>Details</i>	6
<i>Harmonies</i>	11
<i>Previews</i>	23
<i>Color Blindness Simulation</i>	26
<i>CSS Examples</i>	29

Color

Decimal(11833751)

Conversions

Conversions Part 1

Format	Color
Hex	B49197
RGB	180, 145, 151
RGB Percent	71%, 57%, 59%
CMY	0.2941, 0.4314, 0.4078
CMYK	0.00, 0.19, 0.16, 0.29
HSL	350°, 19%, 64%
HSV	350°, 19%, 71%
XYZ	34.5337, 32.1885, 33.6710
YIQ	156.1490, 18.9340, 9.2860

Conversions

Conversions Part 2

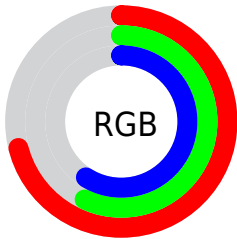
Format	Color
RYB	180, 145, 151
Decimal	11833751
CIELab	63.50, 14.12, 1.82
CIELCh	63, 14.235, 7.341
Yxy	32.1885, 0.3440, 0.3206
Android (android.graphics.Color)	4290023831 (0xFFB49197)
YUV	156.1490, -2.5385, 20.9173
Hunter-Lab	56.7349, 9.3644, 4.5270

Details

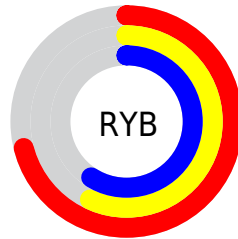
The Decimal color **11833751** is a light color, and the websafe version is hex **CC9999**. A complement of this color would be **9548974**, and the grayscale version is **10263708**.

A 20% lighter version of the original color is **15517645**, and **8347236** is the 20% darker color. If you saturate the color by 10%, you get **11829128**, and if you desaturate by 10%, it is **11838374**.

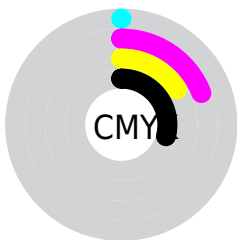
Distribution



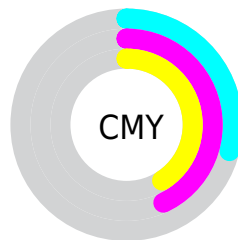
- Red (71%)
- Green (57%)
- Blue (59%)



- Red (71%)
- Yellow (57%)
- Blue (59%)



- Cyan (0%)
- Magenta (19%)
- Yellow (16%)
- Black (29%)



- Cyan (29%)
- Magenta (43%)
- Yellow (41%)

Brightness & Saturation Gradients

These gradients show how the Decimal color 11833751 changes by changing the brightness by 10 percent. The first figure shows a shift by +10% for each color and the second figure -10%.

Similar to the brightness gradients but the following saturation gradients show a change of the Decimal color 11833751 by changing the saturation by 10% instead.

 11833751

 11833751

16777215

 10057597


 15517645

 8347236

 16770025

 6637388

 5058614

 3480352

 2228745

 0

 11833751

 11833751

 11829128

 11838374

■ 11824505

■ 11842997

■ 11819882

■ 11847620

■ 11815259

■ 11852243

■ 11810636

■ 11856866

■ 11806014

■ 11861488

■ 11801391

■ 11862015

■ 11796768

■ 11796511

Harmonies

Analogous

The Analogous color harmony consists of three colors that are next to each other on the color wheel.



11375268



11833751



11833995

Triad

The Triadic color harmony groups three colors that are evenly spaced from another and form a triangle on the color wheel.



11833751



9608837



8494769

Complementary

The Complementary color scheme is a pair of colors which are on the opposite of each other on the color wheel.



11833751



9548974

Split Complementary

Split-complementary colors differ from the complementary color scheme. The scheme consists of three colors, the original color and two neighbors of the complement color.



7970985



11833751



8691856

Square

The Square scheme is like the rectangle color scheme, but the four colors are evenly spaced on the color wheel.



11833751



10590849



8102300



9476787

Rectangle

The Rectangle color scheme consists of four colors that form a rectangle on the color wheel.



11833751



11572357



8102300



8232879

Sweetspot

The Sweet Spot groups the original color and five complimentary colors.



11833751



15457759



11440564



7695726



16119285



7697781

Same Dimension

The Same Dimension uses a secret algorithm to generate beautiful new colors.



11833751



15447486



11836561



5853266



10027034



1703940

Inverse Universe

The Inverse Universe completely reimagines the original color for something new.



11833751



15447486



9546164



5853266



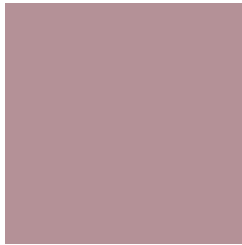
10027034



1703940

Previews

White Background



This preview shows how the Decimal color 11833751 looks on a white background.

Color Contrast Check

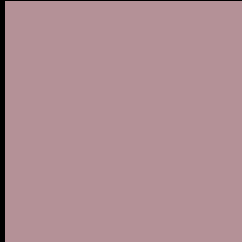
Large Text (above 18pt) WCAG AA × Fail

Any Text WCAG AA × Fail

Large Text (above 18pt) WCAG AAA × Fail

Any Text WCAG AAA × Fail

Black Background



This preview shows how the Decimal color 11833751 looks on a black background.

Color Contrast Check

Large Text (above 18pt) WCAG AA ✓ Pass

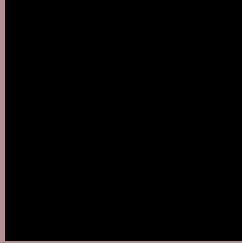
Any Text WCAG AA ✓ Pass

Large Text (above 18pt) WCAG AAA ✓ Pass

Any Text WCAG AAA ✓ Pass

If you want to check with other color combinations, try the [Color Contrast Checker](#).

Decimal 11833751 Background



This preview shows how black text looks on a background with the Decimal color 11833751.



This preview shows how white text looks on a background with the Decimal color 11833751.

Color Blindness Simulation

Color vision deficiency is a very complex topic, and I could not describe the different causes any better than Wikipedia does, so if you want to learn more, you should check out their [article about color blindness](#).

Dichromacy



Original Color
11833751

Protanopia
10262940

Deuteranopia
11179414



Tritanopia
11899035

Trichromacy



Original Color
11833751

Protanomaly
10851994

Deuteranomaly
11441302

Tritanomaly
11899034

Monochromacy



Original Color
11833751

Achromatopsia
10263708

Achromatomaly
10852506

CSS Examples

Text

The CSS property to change the color of the text to Decimal 11833751 is called "color". The color property can be set on classes, ids or directly on the HTML element.

This example shows how text in the color #B49197 looks like.

```
.text, #text, p{  
    color:#B49197  
}
```

If you want to add a text shadow in that color use the text-shadow property, you can generate a text shadow directly with our [CSS Text Shadow Generator](#).

Here you see how black text with a 4 pixel #B49197 colored shadow looks like.

```
.shadow{ text-shadow: 4px 4px 2px #B49197
}
```

Border

The CSS property to change the border of an element to Decimal 11833751 is called "border". The border property can be set on classes, ids or directly on the HTML element.

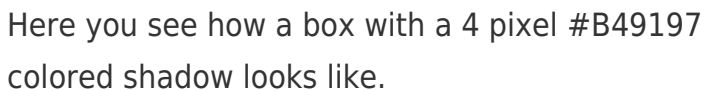
This example shows the color as border, it can be applied via the CSS property "border" or "border-color".

```
.border, #border, table{ border:4px solid
#B49197 }
```

If only the border color should be changed use the property `border-color`.

```
.border{ border-color:#B49197 }
```

If you want to add a box shadow in that color use:



Here you see how a box with a 4 pixel #B49197 colored shadow looks like.

```
.boxshadow{ -moz-box-shadow:4px 4px 4px  
4px #B49197; -webkit-box-shadow:4px 4px  
4px 4px #B49197; box-shadow:4px 4px 4px  
4px #B49197 }
```

Background

The CSS property to change the background color of an element to Decimal 11833751 is called "background". The background property can be set on classes, ids or directly on the HTML element.

```
.background, #background, body{  
background:#B49197 }
```

If only the background color should be changed can be used:

```
.background{ background-color:#B49197 }
```

This example shows the color as background, it is applied via the CSS property "background".

To optimize and compress your CSS code, you can use our [online CSS compressor and optimizer](#) based on csstidy. If you want to create a linear or radial gradient as background or border, check our [CSS Gradient Generator](#).

Hey! You found this booklet interesting? Support Converting Colors with the new Membership Option!

The pro membership hides all ads, plus gives you double the colors in the color bucket, and more awesome pro features!

[Learn more, Memberships starting at \\$2.50/m!](#)

**Follow me
on Twitter!**

@ConvertingColor