

Converting Colors

Decimal(11835022)

Have a look what the booklet for
Decimal(11835022) contains.

Decimal(11835022)	3
<i>Conversions</i>	4
<i>Details</i>	6
<i>Harmonies</i>	11
<i>Previews</i>	23
<i>Color Blindness Simulation</i>	26
<i>CSS Examples</i>	29

Color

Decimal(11835022)

Conversions

Conversions Part 1

Format	Color
Hex	B4968E
RGB	180, 150, 142
RGB Percent	71%, 59%, 56%
CMY	0.2941, 0.4118, 0.4431
CMYK	0.00, 0.17, 0.21, 0.29
HSL	13°, 20%, 63%
HSV	13°, 21%, 71%
XYZ	34.6112, 33.4690, 30.2271
YIQ	158.0580, 20.4480, 3.8720

Conversions

Conversions Part 2

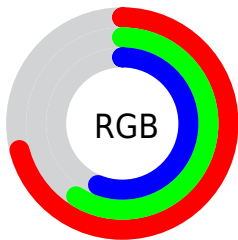
Format	Color
R_{YB}	180, 152, 142
Decimal	11835022
CIE Lab	64.54, 9.90, 8.39
CIE LCh	65, 12.977, 40.282
Yxy	33.4690, 0.3521, 0.3405
Android (android.graphics.Color)	4290025102 (0xFFB4968E)
YUV	158.0580, -7.9166, 19.2431
Hunter-Lab	57.8524, 5.5491, 9.5184

Details

The Decimal color **11835022** is a light color, and the websafe version is hex **CC9999**. A complement of this color would be **9350324**, and the grayscale version is **10395294**.

A 20% lighter version of the original color is **15518916**, and **8348508** is the 20% darker color. If you saturate the color by 10%, you get **11831420**, and if you desaturate by 10%, it is **11838624**.

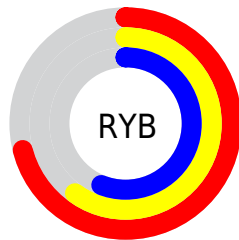
Distribution



Red (71%)

Green (59%)

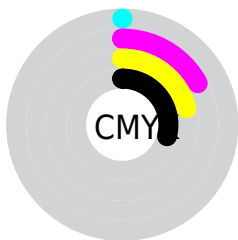
Blue (56%)



Red (71%)

Yellow (60%)

Blue (56%)

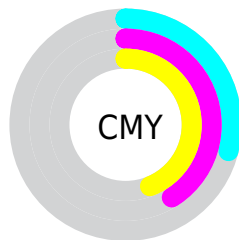


Cyan (0%)

Magenta (17%)

Yellow (21%)

Black (29%)



Cyan (29%)

Magenta (41%)

Yellow (44%)

Brightness & Saturation Gradients

These gradients show how the Decimal color 11835022 changes by changing the brightness by 10 percent. The first figure shows a shift by +10% for each color and the second figure -10%.

Similar to the brightness gradients but the following saturation gradients show a change of the Decimal color 11835022 by changing the saturation by 10% instead.

 11835022

 11835022

16777215

 10058868

 15518916


 8348508

 16771296

 6638404

16777212

 5059886

 3481369

 2164736

 0

 11835022

 11835022

 11831420

 11838624

 11827818

 11842226

 11823960

 11846084

 11820358

 11849686

 11816756

 11853288

 11813154

 11856890

 11809552

 11860479

 11806208

 11862015

Harmonies

Analogous

The Analogous color harmony consists of three colors that are next to each other on the color wheel.



11900313



11835022



11377031

Triad

The Triadic color harmony groups three colors that are evenly spaced from another and form a triangle on the color wheel.



11835022



8954772



9804979

Complementary

The Complementary color scheme is a pair of colors which are on the opposite of each other on the color wheel.



11835022



9350324

Split Complementary

Split-complementary colors differ from the complementary color scheme. The scheme consists of three colors, the original color and two neighbors of the complement color.



8888498



11835022



8430496

Square

The Square scheme is like the rectangle color scheme, but the four colors are evenly spaced on the color wheel.



11835022



9740427



8364715



10786990

Rectangle

The Rectangle color scheme consists of four colors that form a rectangle on the color wheel.



11835022



10919045



8364715



9477555

Sweetspot

The Sweet Spot groups the original color and five complimentary colors.



11835022



15458269



11833004



7696237



16119285



7697781

Same Dimension

The Same Dimension uses a secret algorithm to generate beautiful new colors.



11835022



15449264



11839886



5853776



10035200



1705216

Inverse Universe

The Inverse Universe completely reimagines the original color for something new.



9350324



11591403



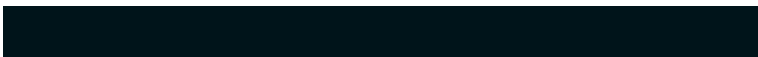
9345460



5265241



31129



5146

Previews

White Background



This preview shows how the Decimal color 11835022 looks on a white background.

Color Contrast Check

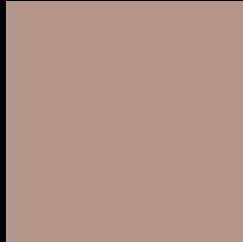
Large Text (above 18pt) WCAG AA × Fail

Any Text WCAG AA × Fail

Large Text (above 18pt) WCAG AAA × Fail

Any Text WCAG AAA × Fail

Black Background



This preview shows how the Decimal color 11835022 looks on a black background.

Color Contrast Check

Large Text (above 18pt) WCAG AA ✓ Pass

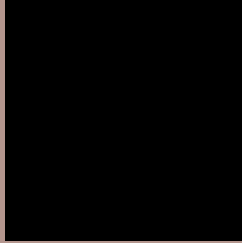
Any Text WCAG AA ✓ Pass

Large Text (above 18pt) WCAG AAA ✓ Pass

Any Text WCAG AAA ✓ Pass

If you want to check with other color combinations, try the [Color Contrast Checker](#).

Decimal 11835022 Background



This preview shows how black text looks on a background with the Decimal color 11835022.



This preview shows how white text looks on a background with the Decimal color 11835022.

Color Blindness Simulation

Color vision deficiency is a very complex topic, and I could not describe the different causes any better than Wikipedia does, so if you want to learn more, you should check out their [article about color blindness](#).


Dichromacy



Original Color
11835022

Protanopia
10656913

Deuteranopia
11638670



Tritanopia
11965343

Trichromacy



Original Color
11835022

Protanomaly
11115152

Deuteranomaly
11704206

Tritanomaly
11900057

Monochromacy



Original Color
11835022

Achromatopsia
10395294

Achromatomaly
10918808

CSS Examples

Text

The CSS property to change the color of the text to Decimal 11835022 is called "color". The color property can be set on classes, ids or directly on the HTML element.

This example shows how text in the color #B4968E looks like.

```
.text, #text, p{  
    color:#B4968E  
}
```

If you want to add a text shadow in that color use the text-shadow property, you can generate a text shadow directly with our [CSS Text Shadow Generator](#).

Here you see how black text with a 4 pixel #B4968E colored shadow looks like.

```
.shadow{ text-shadow: 4px 4px 2px #B4968E
}
```

Border

The CSS property to change the border of an element to Decimal 11835022 is called "border". The border property can be set on classes, ids or directly on the HTML element.

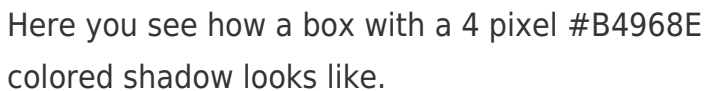
This example shows the color as border, it can be applied via the CSS property "border" or "border-color".

```
.border, #border, table{ border:4px solid
#B4968E }
```

If only the border color should be changed use the property `border-color`.

```
.border{ border-color:#B4968E }
```

If you want to add a box shadow in that color use:



Here you see how a box with a 4 pixel #B4968E colored shadow looks like.

```
.boxshadow{ -moz-box-shadow:4px 4px 4px  
4px #B4968E; -webkit-box-shadow:4px 4px  
4px 4px #B4968E; box-shadow:4px 4px 4px  
4px #B4968E }
```

Background

The CSS property to change the background color of an element to Decimal 11835022 is called "background". The background property can be set on classes, ids or directly on the HTML element.

```
.background, #background, body{  
background:#B4968E }
```

If only the background color should be changed can be used:

```
.background{ background-color:#B4968E }
```

This example shows the color as background, it is applied via the CSS property "background".

To optimize and compress your CSS code, you can use our [online CSS compressor and optimizer](#) based on csstidy. If you want to create a linear or radial gradient as background or border, check our [CSS Gradient Generator](#).

Hey! You found this booklet interesting? Support Converting Colors with the new Membership Option!

The pro membership hides all ads, plus gives you double the colors in the color bucket, and more awesome pro features!

[Learn more, Memberships starting at \\$2.50/m!](#)

**Follow me
on Twitter!**

@ConvertingColor