

Converting Colors

Decimal(11835044)

Have a look what the booklet for
Decimal(11835044) contains.

Decimal(11835044)	3
<i>Conversions</i>	4
<i>Details</i>	6
<i>Harmonies</i>	11
<i>Previews</i>	23
<i>Color Blindness Simulation</i>	26
<i>CSS Examples</i>	29

Color

Decimal(11835044)

Conversions

Conversions Part 1

Format	Color
Hex	B496A4
RGB	180, 150, 164
RGB Percent	71%, 59%, 64%
CMY	0.2941, 0.4118, 0.3569
CMYK	0.00, 0.17, 0.09, 0.29
HSL	332°, 17%, 65%
HSV	332°, 17%, 71%
XYZ	36.4296, 34.1963, 39.8025
YIQ	160.5660, 13.3860, 10.7140

Conversions

Conversions Part 2

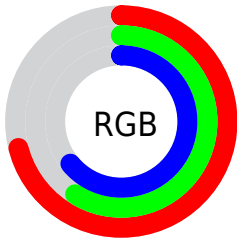
Format	Color
R_{YB}	180, 150, 164
Decimal	11835044
CIE _{Lab}	65.12, 13.55, -3.14
CIE _{LCh}	65, 13.910, 346.934
Yxy	34.1963, 0.3299, 0.3097
Android (android.graphics.Color)	4290025124 (0xFFB496A4)
YUV	160.5660, 1.6930, 17.0436
Hunter-Lab	58.4776, 8.8636, 0.5789

Details

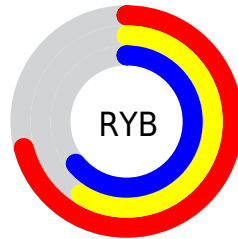
The Decimal color **11835044** is a light color, and the websafe version is hex **CC9999**. A complement of this color would be **9876646**, and the grayscale version is **10592673**.

A 20% lighter version of the original color is **15518939**, and **8348528** is the 20% darker color. If you saturate the color by 10%, you get **11830426**, and if you desaturate by 10%, it is **11839662**.

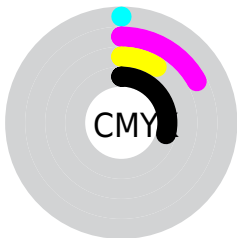
Distribution



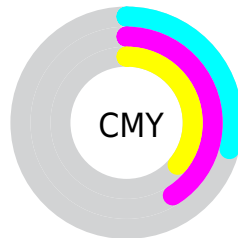
- Red (71%)
- Green (59%)
- Blue (64%)



- Red (71%)
- Yellow (59%)
- Blue (64%)



- Cyan (0%)
- Magenta (17%)
- Yellow (9%)
- Black (29%)



- Cyan (29%)
- Magenta (41%)
- Yellow (36%)

Brightness & Saturation Gradients

These gradients show how the Decimal color 11835044 changes by changing the brightness by 10 percent. The first figure shows a shift by +10% for each color and the second figure -10%.

Similar to the brightness gradients but the following saturation gradients show a change of the Decimal color 11835044 by changing the saturation by 10% instead.

 11835044

 11835044

16777215

 10058890

 15518939

 8348528

 16771319

 6703960

 5059649

 3546923

 2164758

 0

 11835044

 11835044

 11830426

 11839662

 11825809

 11844279

 11821191

 11848897

 11816574

 11853514

 11811956

 11858132

 11807338

 11861982

 11802721

 11861991

 11798103

 11862001

 11796564

 11862010

Harmonies

Analogous

The Analogous color harmony consists of three colors that are next to each other on the color wheel.



11114927



11835044



12162711

Triad

The Triadic color harmony groups three colors that are evenly spaced from another and form a triangle on the color wheel.



11835044



10526598



8430768

Complementary

The Complementary color scheme is a pair of colors which are on the opposite of each other on the color wheel.



11835044



9876646

Split Complementary

Split-complementary colors differ from the complementary color scheme. The scheme consists of three colors, the original color and two neighbors of the complement color.



8299941



11835044



9610125

Square

The Square scheme is like the rectangle color scheme, but the four colors are evenly spaced on the color wheel.



11835044



11377542



8758680



9085366

Rectangle

The Rectangle color scheme consists of four colors that form a rectangle on the color wheel.



11835044



12097424



8758680



8299948

Sweetspot

The Sweet Spot groups the original color and five complimentary colors.



11835044



15458276



10917556



7695986



16119285



7697781

Same Dimension

The Same Dimension uses a secret algorithm to generate beautiful new colors.



11835044



15449298



11835286



5853268



10027079



1703948

Inverse Universe

The Inverse Universe completely reimagines the original color for something new.



11835044



15449298



9876404



5853268



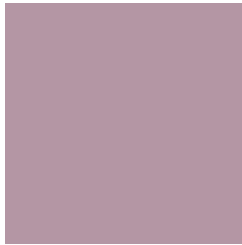
10027079



1703948

Previews

White Background



This preview shows how the Decimal color 11835044 looks on a white background.

Color Contrast Check

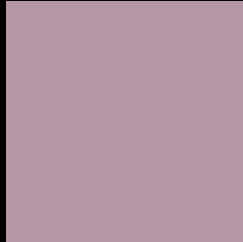
Large Text (above 18pt) WCAG AA × Fail

Any Text WCAG AA × Fail

Large Text (above 18pt) WCAG AAA × Fail

Any Text WCAG AAA × Fail

Black Background



This preview shows how the Decimal color 11835044 looks on a black background.

Color Contrast Check

Large Text (above 18pt) WCAG AA ✓ Pass

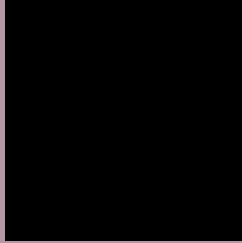
Any Text WCAG AA ✓ Pass

Large Text (above 18pt) WCAG AAA ✓ Pass

Any Text WCAG AAA ✓ Pass

If you want to check with other color combinations, try the [Color Contrast Checker](#).

Decimal 11835044 Background



This preview shows how black text looks on a background with the Decimal color 11835044.



This preview shows how white text looks on a background with the Decimal color 11835044.

Color Blindness Simulation

Color vision deficiency is a very complex topic, and I could not describe the different causes any better than Wikipedia does, so if you want to learn more, you should check out their [article about color blindness](#).


Dichromacy



Original Color
11835044

Protanopia
10395048

Deuteranopia
11245987



Tritanopia
11835042

Trichromacy



Original Color
11835044

Protanomaly
10918567

Deuteranomaly
11442339

Tritanomaly
11835043

Monochromacy



Original Color
11835044

Achromatopsia
10592673

Achromatomaly
11050402

CSS Examples

Text

The CSS property to change the color of the text to Decimal 11835044 is called "color". The color property can be set on classes, ids or directly on the HTML element.

This example shows how text in the color #B496A4 looks like.

```
.text, #text, p{  
    color:#B496A4  
}
```

If you want to add a text shadow in that color use the text-shadow property, you can generate a text shadow directly with our [CSS Text Shadow Generator](#).

Here you see how black text with a 4 pixel #B496A4 colored shadow looks like.

```
.shadow{ text-shadow: 4px 4px 2px #B496A4
}
```

Border

The CSS property to change the border of an element to Decimal 11835044 is called "border". The border property can be set on classes, ids or directly on the HTML element.

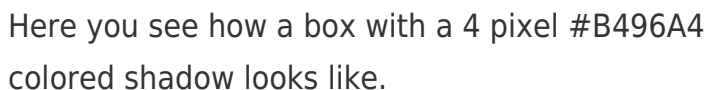
This example shows the color as border, it can be applied via the CSS property "border" or "border-color".

```
.border, #border, table{ border:4px solid
#B496A4 }
```

If only the border color should be changed use the property `border-color`.

```
.border{ border-color:#B496A4 }
```

If you want to add a box shadow in that color use:



Here you see how a box with a 4 pixel #B496A4 colored shadow looks like.

```
.boxshadow{ -moz-box-shadow:4px 4px 4px  
4px #B496A4; -webkit-box-shadow:4px 4px  
4px 4px #B496A4; box-shadow:4px 4px 4px  
4px #B496A4 }
```

Background

The CSS property to change the background color of an element to Decimal 11835044 is called "background". The background property can be set on classes, ids or directly on the HTML element.

```
.background, #background, body{  
background:#B496A4 }
```

If only the background color should be changed can be used:

```
.background{ background-color:#B496A4 }
```

This example shows the color as background, it is applied via the CSS property "background".

To optimize and compress your CSS code, you can use our [online CSS compressor and optimizer](#) based on csstidy. If you want to create a linear or radial gradient as background or border, check our [CSS Gradient Generator](#).

Hey! You found this booklet interesting? Support Converting Colors with the new Membership Option!

The pro membership hides all ads, plus gives you double the colors in the color bucket, and more awesome pro features!

[Learn more, Memberships starting at \\$2.50/m!](#)

**Follow me
on Twitter!**

@ConvertingColor